

F.A.U. RTE.	SECTION	COUNTY	TOTAL SHEETS
2505	94-P4008-01-BR	KANE	81 1

STATE OF ILLINOIS
DEPARTMENT OF TRANSPORTATION
DIVISION OF HIGHWAYS
**PLANS FOR PROPOSED
FEDERAL AID HIGHWAY**

FAU 2505 (RANDALL ROAD)
SECTION 94-P4008-01-BR
PEDESTRIAN BRIDGE OVER RANDALL ROAD
AT SILVER GLEN ROAD
PROJECT TE-00D1(659)
KANE COUNTY
C-91-130-05

FOR INDEX OF SHEETS, SEE SHEET NO. 2

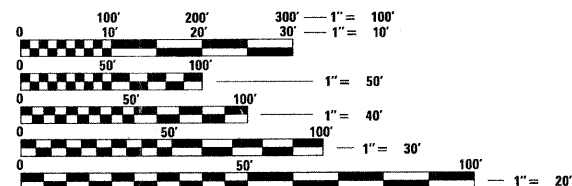


FIELD ENGINEER, MARILIN SOLOMON (847) 705-4407

MID-COUNTY TRAIL
DESIGN DESIGNATION: BIKE PATH
DESIGN SPEED: 20 MPH

RANDALL ROAD
ADT: 35,000 (2004)
DESIGN DESIGNATION: PRINCIPAL ARTERIAL
DESIGN SPEED: 55 MPH
POSTED SPEED: 50 MPH

SILVER GLEN ROAD
ADT: 4,900 (2004)
DESIGN DESIGNATION: COLLECTOR
DESIGN SPEED: 50 MPH
POSTED SPEED: 45 MPH



FULL SIZE PLANS HAVE BEEN PREPARED USING STANDARD ENGINEERING SCALES. REDUCED SIZED PLANS WILL NOT CONFORM TO STANDARD SCALES. IN MAKING MEASUREMENTS ON REDUCED PLANS, THE ABOVE SCALES MAY BE USED.

J.U.L.I.E.
JOINT UTILITY LOCATION INFORMATION FOR EXCAVATION
1-800-892-0123

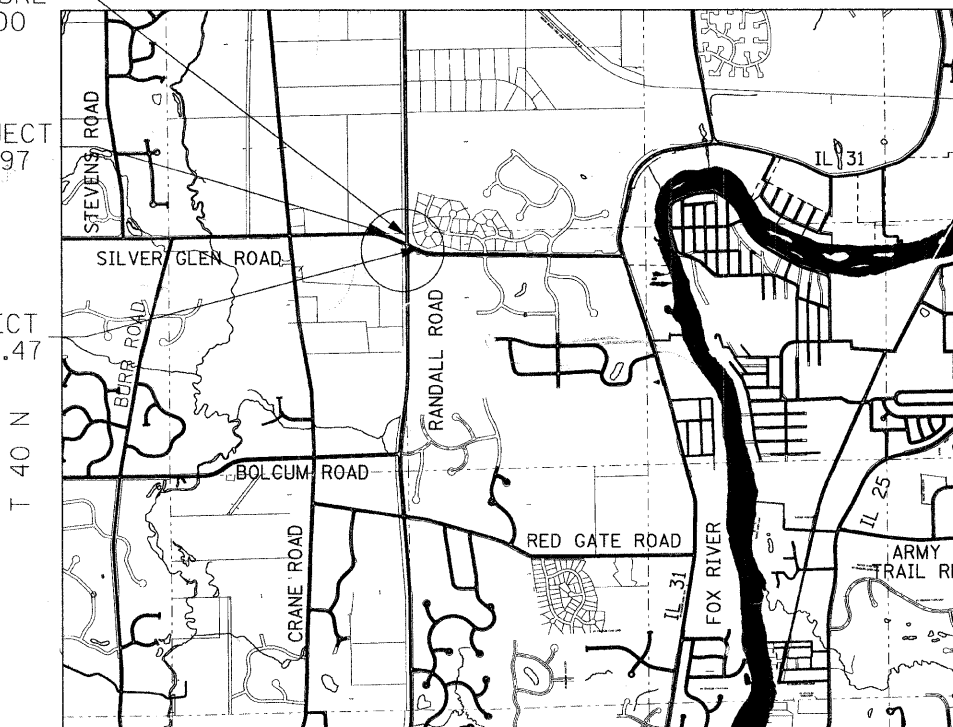
CONTRACT NO. 83984

PROPOSED STRUCTURE
045-9000

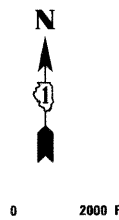
R 8 E 3rd P.M.

BEGIN PROJECT STA 10+02.97

END PROJECT STA 23+91.47



PROJECT AND GROSS LENGTH = 1,390 FT (0.26 MI)

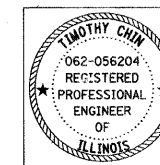


RH&A
Robert H. Anderson & Associates, Inc.
Consulting Engineers
License No. 184-005281

NOVEMBER 4 20 08
Andrew E. Underwager
ANDREW E. UNDERWAGER
ILLINOIS LICENSED STRUCTURAL ENGINEER NO. 081-006218
EXPIRATION DATE 11-30-20 09



NOVEMBER 4 20 08
Timothy Chin
TIMOTHY CHIN
ILLINOIS REG. PROFESSIONAL ENGINEER NO. 062-056204
EXPIRATION DATE 11-30-2009



STATE OF ILLINOIS
DEPARTMENT OF TRANSPORTATION
DIVISION OF HIGHWAYS

APPROVED Nov 4 20 08
Carl Reed
KANE COUNTY DIVISION OF TRANSPORTATION, COUNTY ENGINEER

APPROVED Oct 30 20 08
Nancy A. Cox
ST. CHARLES PARK DISTRICT, PRESIDENT

APPROVED November 3 20 08
Christopher Holt
FOREST PRESERVE DISTRICT OF KANE COUNTY, PRESIDENT

PASSED November 12 20 08
Christopher Holt
DISTRICT 1 ENGINEER OF LOCAL ROADS & STREETS

RELEASING FOR BID
BASED ON LIMITED
REVIEW November 13 20 08
Dennis M. O'Keefe
DEPUTY DIRECTOR OF HIGHWAYS, REGION 1 ENGINEER

PRINTED BY THE AUTHORITY OF THE STATE OF ILLINOIS