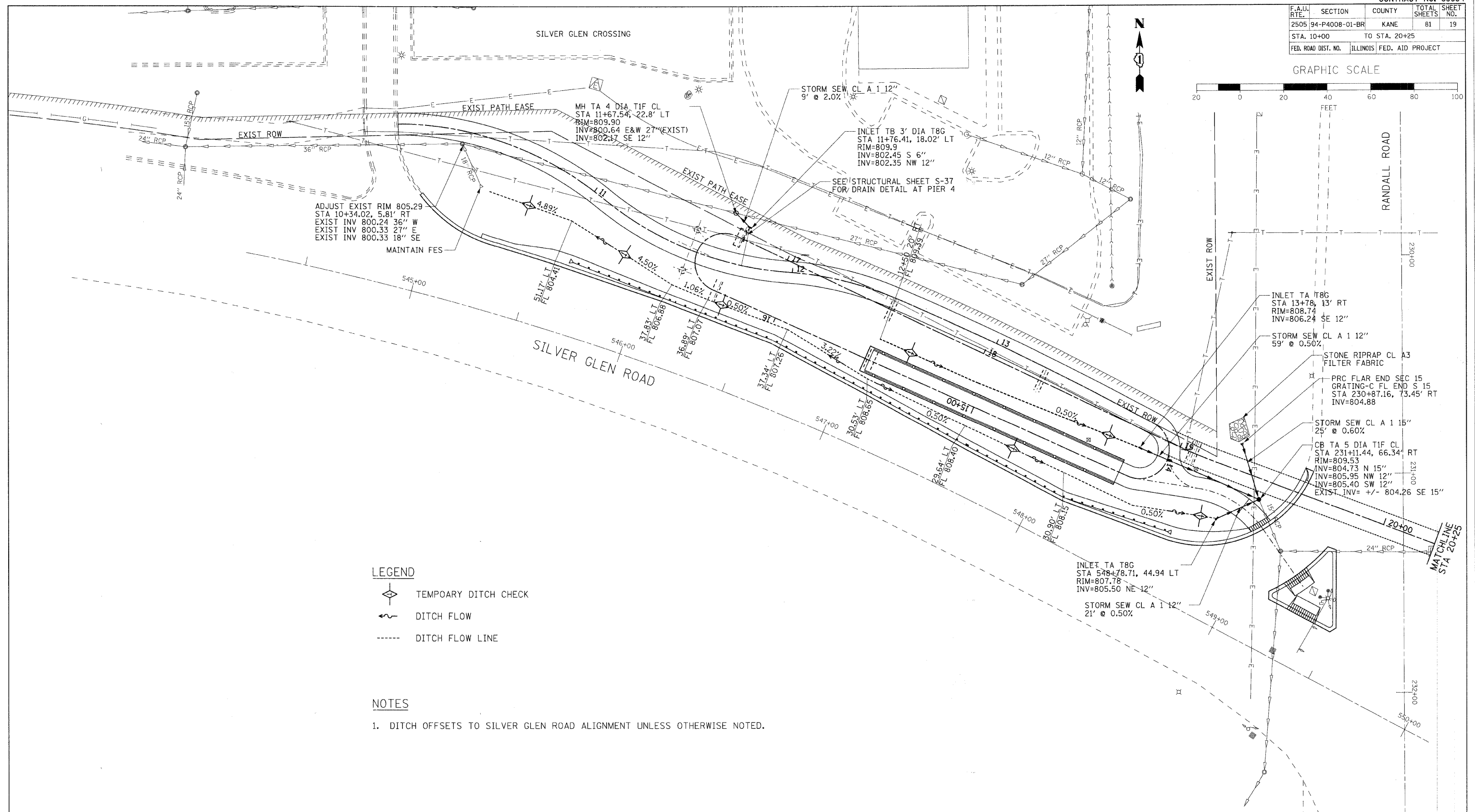


F.A.U. RTE.	SECTION	COUNTY	TOTAL SHEETS	SHEET NO.
2505	94-P4008-01-BR	KANE	81	19
STA. 10+00		TO STA. 20+25		
FED. ROAD DIST. NO.	ILLINOIS	FED. AID PROJECT		

GRAPHIC SCALE



- LEGEND**
- TEMPORARY DITCH CHECK
  - DITCH FLOW
  - DITCH FLOW LINE

- NOTES**
- DITCH OFFSETS TO SILVER GLEN ROAD ALIGNMENT UNLESS OTHERWISE NOTED.

PLOT DATE = 11/4/2008  
 FILE NAME = H:\STC\Projects\116864\Bike Bridges\Design\Drawings\116864-DR01.dgn  
 PLOT SCALE = 1"=20'  
 REFERENCE = #REF#

**RH&A**  
 Robert H. Anderson & Associates, Inc.  
 Consulting Engineers  
 License No. 184-005281

REVISIONS	
NAME	DATE

ILLINOIS DEPARTMENT OF TRANSPORTATION  
 PEDESTRIAN BRIDGE OVER  
 RANDALL ROAD AT SILVER GLEN ROAD  
 FAU 2505, SECTION 94-P4008-01-BR  
 STRUCTURE NUMBER 045-9000  
 DRAINAGE AND UTILITIES  
 SHEET 1 OF 2

VERT. SCALE: 1"=20'  
 HORIZ. SCALE: 1"=20'  
 DATE: OCTOBER 31, 2008

DRAWN BY: TC  
 CHECKED BY: SBP