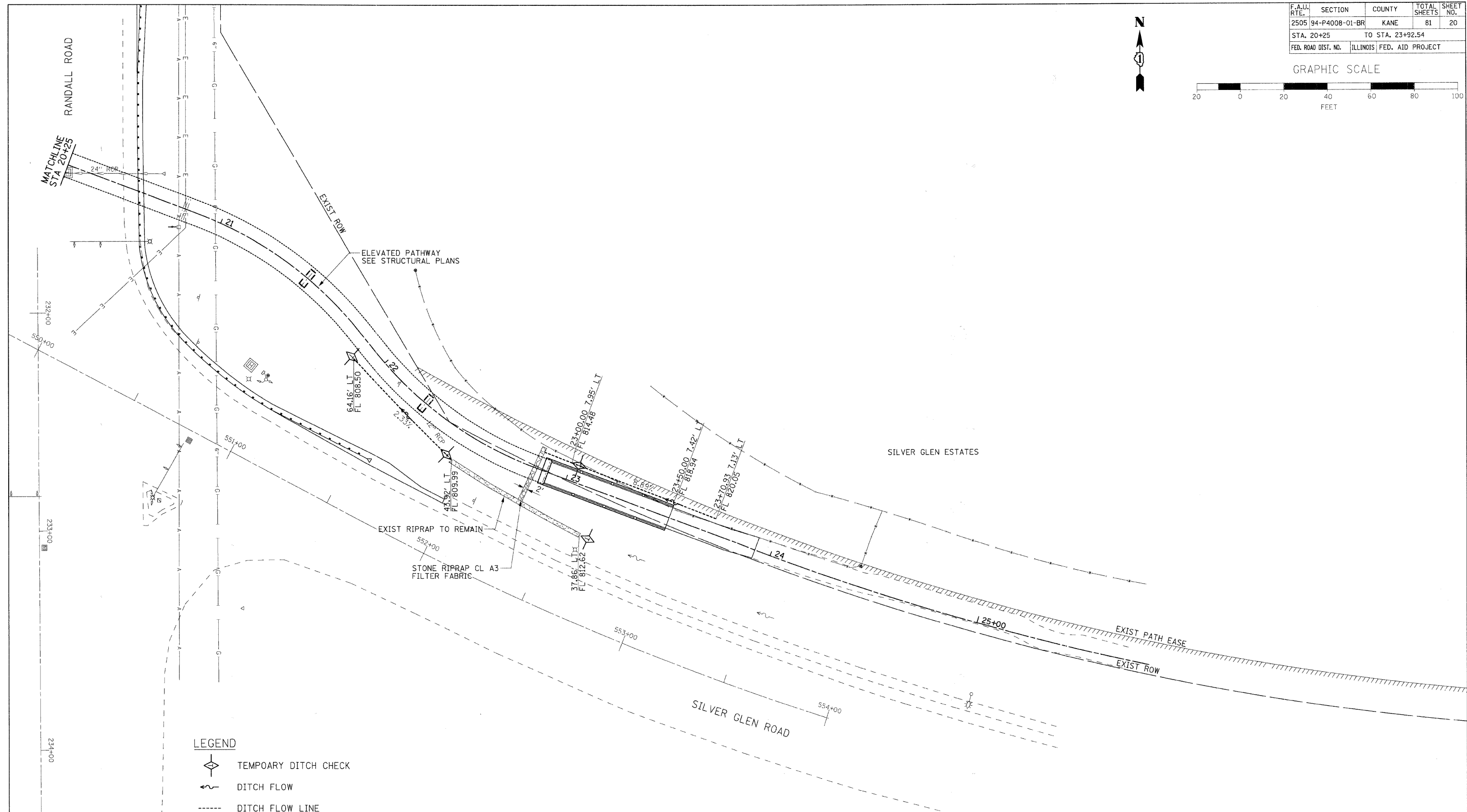
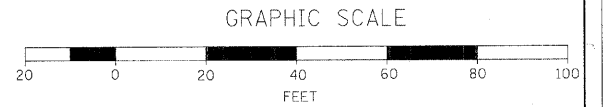


F.A.U. RTE.	SECTION	COUNTY	TOTAL SHEETS	SHEET NO.
2505	94-P4008-01-BR	KANE	81	20
STA. 20+25		TO STA. 23+92.54		
FED. ROAD DIST. NO.		ILLINOIS FED. AID PROJECT		



- LEGEND**
- TEMPORARY DITCH CHECK
 - DITCH FLOW
 - DITCH FLOW LINE

- NOTES**
1. DITCH OFFSETS TO SILVER GLEN ROAD ALIGNMENT UNLESS OTHERWISE NOTED.

RH&A

Robert H. Anderson & Associates, Inc.
Consulting Engineers

License No. 184-005281

REVISIONS	
NAME	DATE

ILLINOIS DEPARTMENT OF TRANSPORTATION
PEDESTRIAN BRIDGE OVER
RANDALL ROAD AT SILVER GLEN ROAD
FAU 2505, SECTION 94-P4008-01-BR
STRUCTURE NUMBER 045-9000
DRAINAGE AND UTILITIES
SHEET 2 OF 2

SCALE: VERT. 1"=20'
HORIZ. 1"=20'
DATE: OCTOBER 31, 2008

DRAWN BY: TC
CHECKED BY: SBP

PLOT DATE = 11/4/2008
FILE NAME = H:\STCP\er\k\d\st\116864\B\16864B\16864B.dgn
PLOT SCALE = 1"=20'
REFERENCE = #REF#