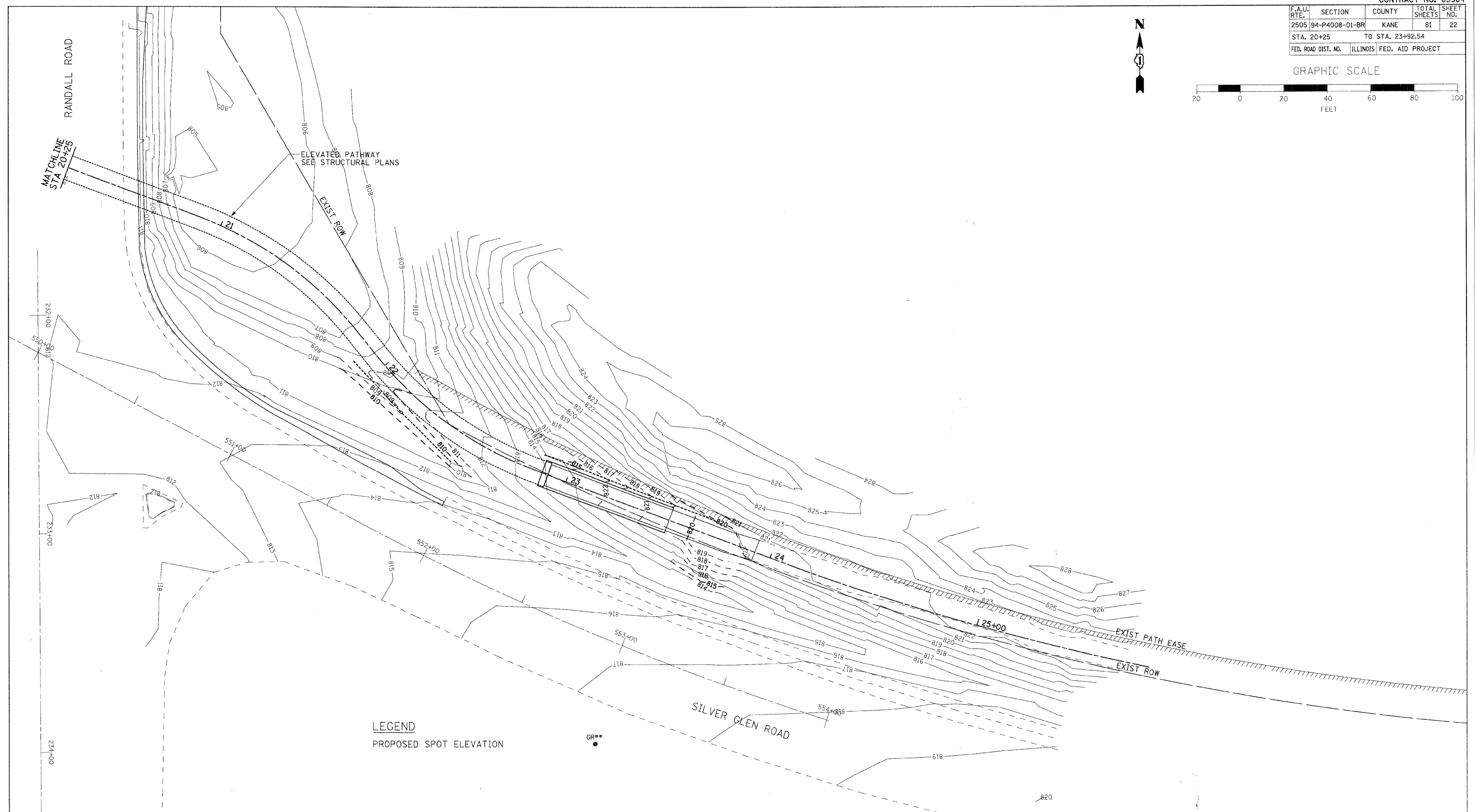
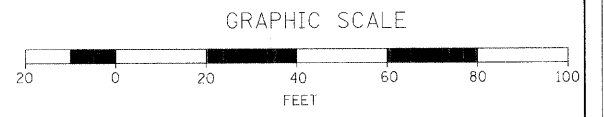
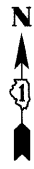


F.A.U. RTE.	SECTION	COUNTY	TOTAL SHEETS	SHEET NO.
2505	94-P4008-01-BR	KANE	81	22
STA. 20+25		TO STA. 23+92.54		
FED. ROAD DIST. NO.		ILLINOIS FED. AID PROJECT		



LEGEND
 PROPOSED SPOT ELEVATION

RH&A
 Robert H. Anderson & Associates, Inc.
 Consulting Engineers
 License No. 184-005281

REVISIONS	
NAME	DATE

ILLINOIS DEPARTMENT OF TRANSPORTATION
 PEDESTRIAN BRIDGE OVER
 RANDALL ROAD AT SILVER GLEN ROAD
 FAU 2505, SECTION 94-P4008-01-BR
 STRUCTURE NUMBER 045-9000
 GRADING PLAN
 SHEET 2 OF 2

VERT. SCALE: 1"=20'
 HORIZ. SCALE: 1"=20'
 DATE: OCTOBER 31, 2008

DRAWN BY: TC
 CHECKED BY: SBP

PLOT DATE = 11/4/2008
 FILE NAME = H:\STC\p\ad\at\1168648\ike_Bridge\Design\Draw\8.1168648R02.dgn
 PLOT SCALE = 1"=20'
 REFERENCE = #REF!