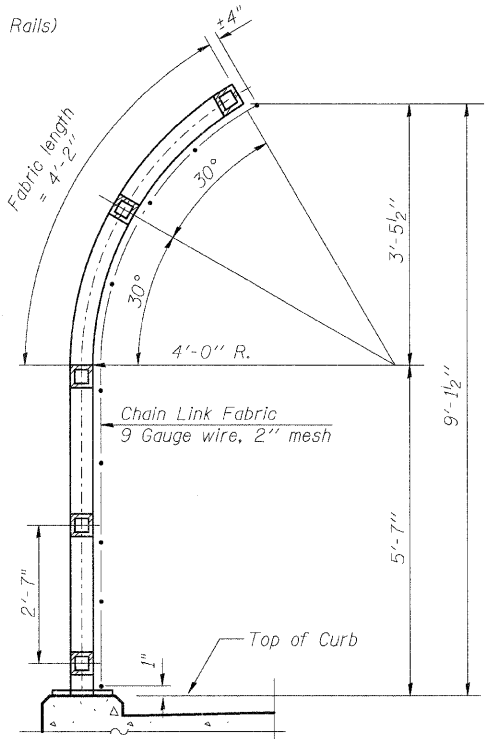
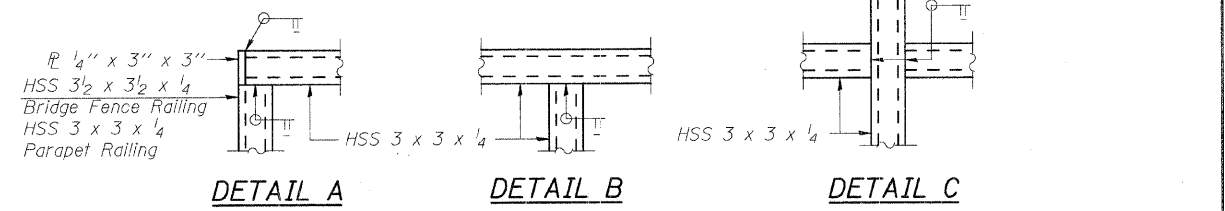


ELEVATION
(Inside Face)



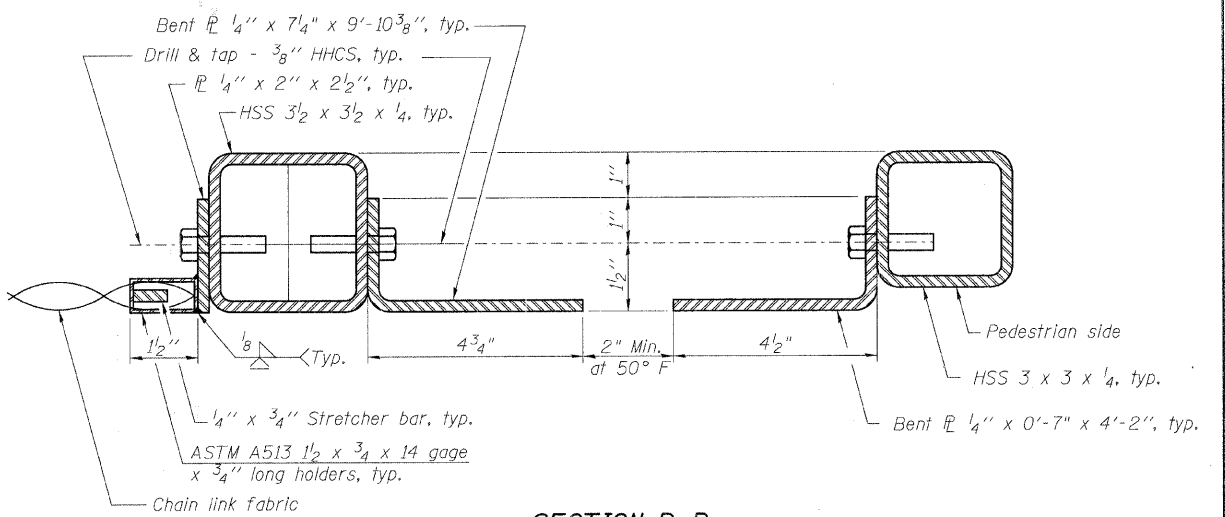
SECTION A-A



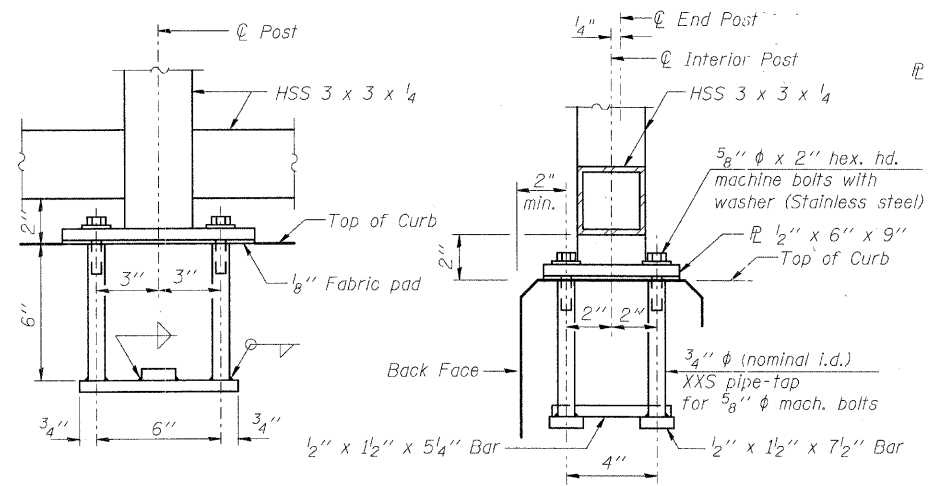
DETAIL A

DETAIL B

DETAIL C

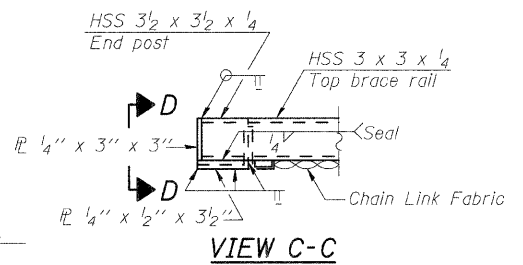


SECTION B-B
(At Joint)

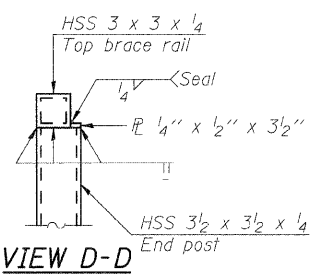


ANCHOR BOLT DETAILS

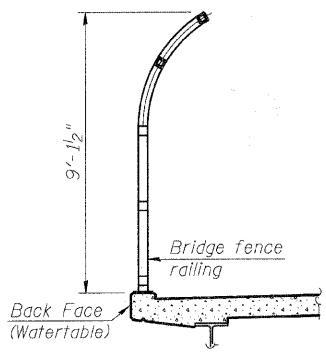
In lieu of the cast-in-place anchor device shown, the Contractor has the option of drilling and setting 5/8\"/>



VIEW C-C



VIEW D-D

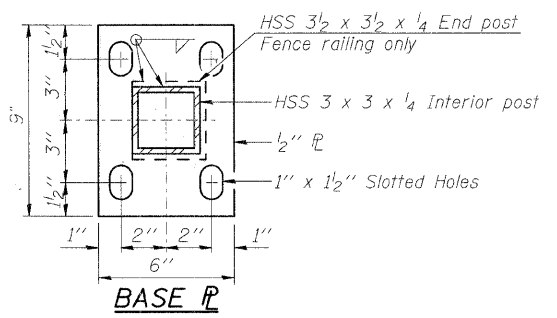


SECTION THRU DECK

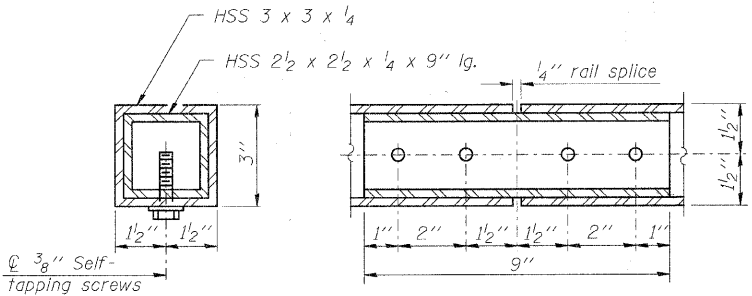
NOTES:
All post, railing, splices, anchor devices, and bent plates shall be painted using one coat of zinc rich primer and two coats of black acrylic enamel paint. The exact color shall be submitted to the Engineer for approval prior to painting any railing elements.

BILL OF MATERIAL

Item	Unit	Quantity
Bridge Fence Railing (Sidewalk)	Foot	348



BASE PL



RAIL SPLICE

DESIGNED	MJD
CHECKED	AEU
DRAWN	MJD
CHECKED	AEU

RHA&A
Robert H. Anderson & Associates, Inc.
Consulting Engineers
License No. 184-005281

BRIDGE RAILING DETAILS II

PEDESTRIAN BRIDGE OVER RANDALL ROAD
AT SILVER GLEN ROAD
FAU 2505, SECTION 94-P4008-01-BR
KANE COUNTY
STRUCTURE NO. 045-9000
DATE: OCTOBER 31, 2008