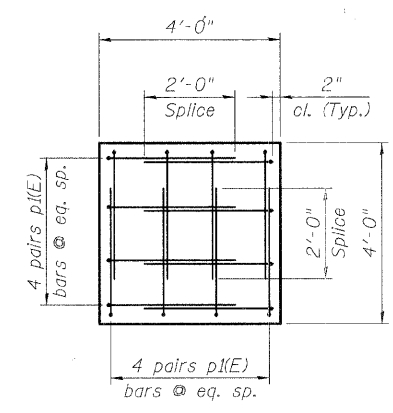


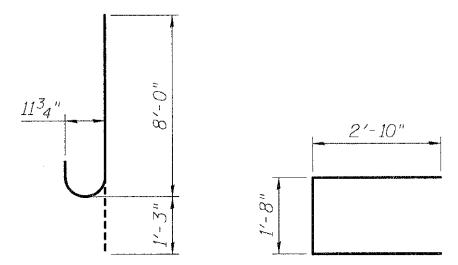
Contract #83984

PILE DATA

Type & Size: Metal Shell - 12 in. dia. x 0.250 in. walls w/ metal shoes
 Nominal Required Bearing: 330 kips
 Allowable Resistance Available: 110 kips
 Est. Length: 45 ft.
 No. Production Piles: 8
 No. Test Piles: 0

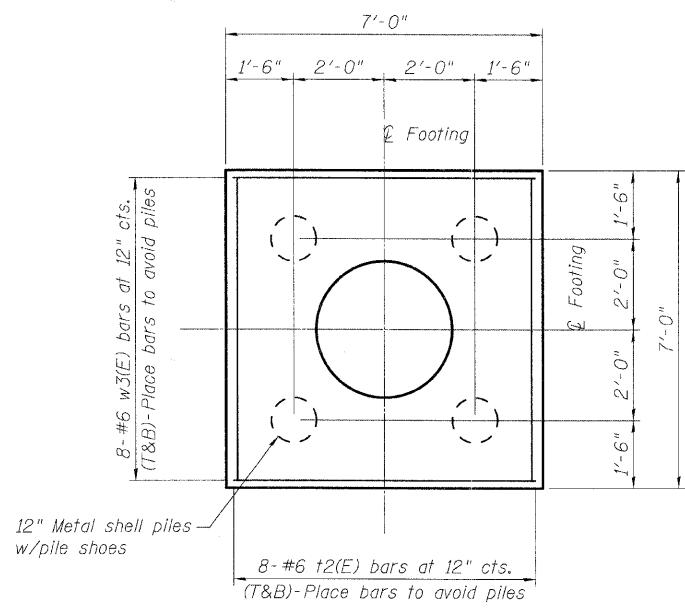


SECTION B-B

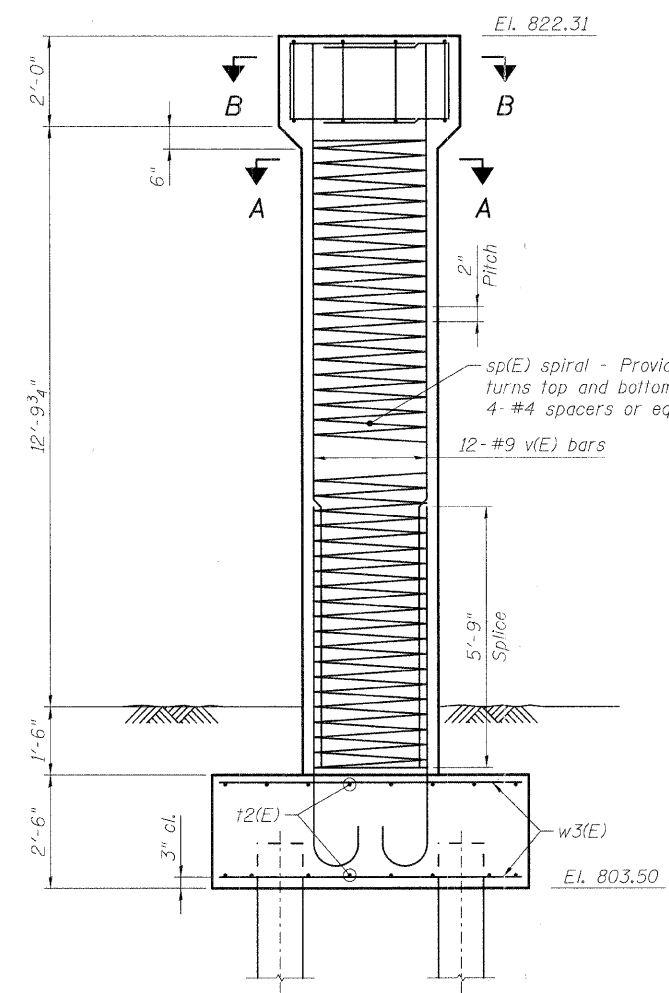


BAR n1(E)

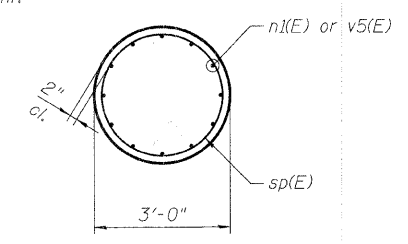
BAR p1(E)



FOOTING PLAN



ELEVATION PIERS 2 & 3



SECTION A-A

BILL OF MATERIAL

PIERS 2 & 3

Bar	No.	Size	Length	Shape
n1(E)	24	#9	9'-3"	U
p1(E)	32	#6	7'-4"	□
sp(E)	2	#4	14'-0"	~
t2(E)	32	#6	6'-8"	—
v5(E)	24	#9	16'-0"	—
w3(E)	32	#6	6'-8"	—
Structure Excavation		Cu. Yd.	36	
Concrete Structures		Cu. Yd.	20	
Reinforcement Bars, Epoxy Coated		Pound	4,000	
Furnishing Metal Shell Piles 12" dia. x 0.250 in.		Foot	360	
Driving Piles		Foot	360	
Pile Shoes		Each	8	
Formliner Textured Surface		Sq. Ft.	310	
Staining Concrete Structures		Sq. Yd.	35	

** Length is height of spiral

DESIGNED	MJD
CHECKED	AEU
DRAWN	MJD
CHECKED	AEU

RHA&A
 Robert H. Anderson & Associates, Inc.
 Consulting Engineers
 License No. 184-005281

PIERS 2 AND 3
 PEDESTRIAN BRIDGE OVER RANDALL ROAD
 AT SILVER GLEN ROAD
 FAU 2505, SECTION 94-P4008-01-BR
 KANE COUNTY
 STRUCTURE NO. 045-9000
 DATE: OCTOBER 31, 2008