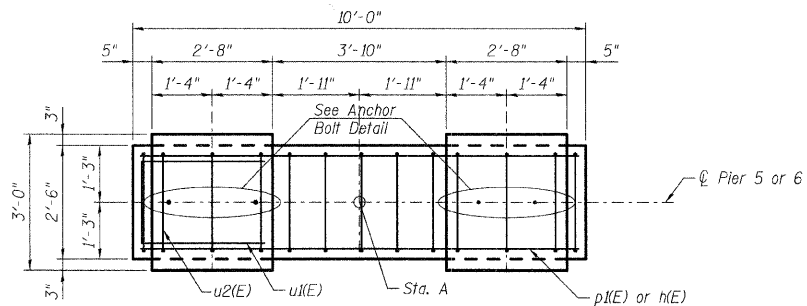


PILE DATA

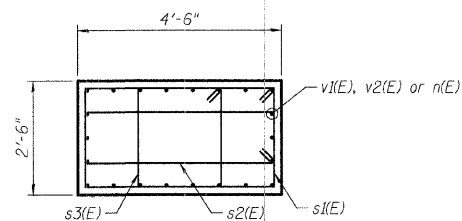
Type & Size: Metal Shell - 12 in. dia. x 0.250 in. walls w/ metal shoes
 Nominal Required Bearing: 330 kips
 Allowable Resistance Available: 110 kips
 Est. Length: 45 ft.
 No. Production Piles: 8
 No. Test Piles: 0

ROUTE NO.	SECTION	COUNTY	TOTAL SHEETS	SHEET NO.	SHEET NO. S-30
FAU 2505	94-P4008-01-BR	KANE	81	54	S-42 SHEETS
FED. ROAD DIST. NO. 7		BILL NO.	FED. AID PROJECT		

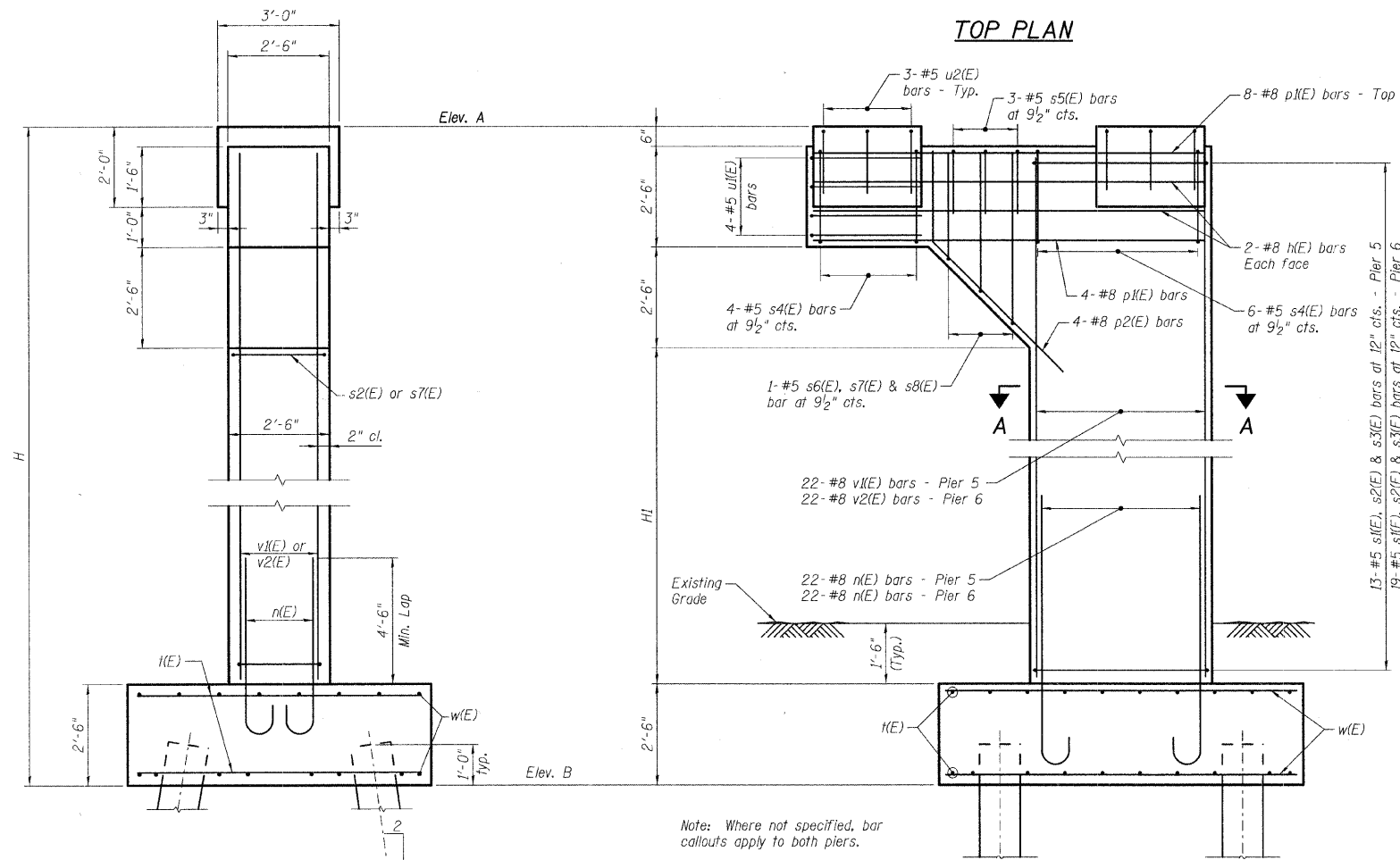
Contract #83984



TOP PLAN



SECTION A-A



ELEVATION
(Looking East)

END VIEW

A & B DIMENSIONS

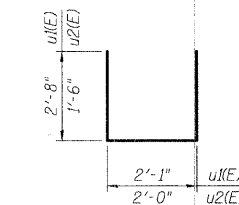
Bar	A	B
s1(E)	4'-2"	2'-2"
s2(E)	4'-2"	1'-1 1/2"
s3(E)	2'-2"	1'-10"
s4(E)	2'-1"	2'-1"

BARS s1(E), s2(E), s3(E) & s4(E)

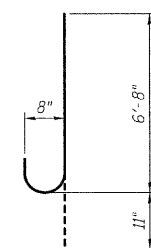
A & B DIMENSIONS

Bar	A	B
s5(E)	2'-1"	1'-6"
s6(E)	2'-1"	2'-7"
s7(E)	2'-1"	3'-5"
s8(E)	2'-1"	4'-2"

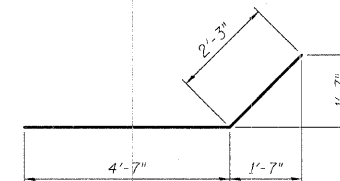
BARS s5(E), s6(E), s7(E) & s8(E)



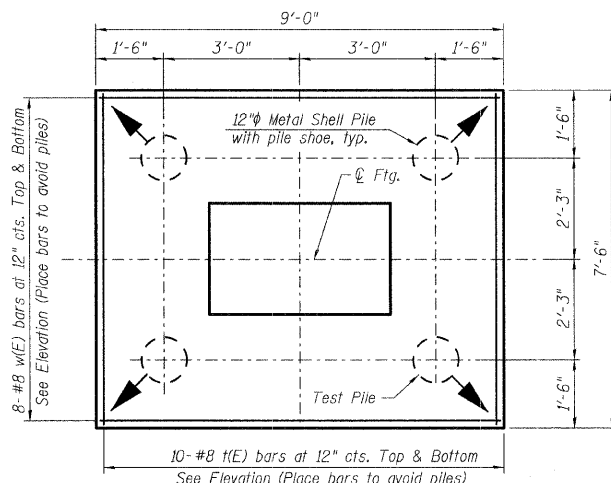
BARS u1(E) & u2(E)



BAR n(E)



BAR p2(E)



FOOTING PLAN

BILL OF MATERIAL

PIERS 5 & 6

Bar	No.	Size	Length	Shape
n(E)	8	#8	9'-8"	—
v1(E)	44	#8	7'-7"	U
p1(E)	24	#8	9'-8"	—
p2(E)	8	#8	6'-10"	—
s1(E)	32	#5	13'-7"	□
s2(E)	32	#5	11'-6"	□
s3(E)	32	#5	8'-11"	□
s4(E)	20	#5	9'-3"	□
s5(E)	6	#5	5'-1"	□
s6(E)	2	#5	7'-3"	□
s7(E)	2	#5	8'-11"	□
s8(E)	2	#5	10'-5"	□
h(E)	40	#8	7'-2"	—
u1(E)	8	#5	7'-5"	□
u2(E)	12	#5	5'-0"	□
v1(E)	22	#8	11'-9"	—
v2(E)	22	#8	17'-6"	—
w(E)	40	#8	8'-8"	—
Structure Excavation			Cu. Yd.	45
Concrete Structures			Cu. Yd.	27
Reinforcement Bars, Epoxy Coated			Pound	5,450
Furnishing Metal Shell Piles 12" dia. x 0.250 in.			Foot	360
Driving Piles			Foot	360
Pile Shoes			Each	8
Formliner Textured Surface			Sq. Ft.	410
Staining Concrete Structures			Sq. Yd.	46

NOTES:

Space reinforcement in cap to miss anchor bolts.
 Pour steps monolithically with Pier.
 See Sheet S-37 for Architectural Details.

PIER TABLE

Pier No.	Station A	Elev. A	Elev. B	H (Ft.)	HI (Ft.)
5	17+52.94	822.57	808.00	14.57	6.57
6	18+29.19	826.18	805.83	20.35	12.35

DESIGNED	MJD
CHECKED	AEU
DRAWN	MJD
CHECKED	AEU



Robert H. Anderson & Associates, Inc.
 Consulting Engineers
 License No. 184-005281

PIERS 5 AND 6

PEDESTRIAN BRIDGE OVER RANDALL ROAD
 AT SILVER GLEN ROAD
 FAU 2505, SECTION 94-P4008-01-BR
 KANE COUNTY
 STRUCTURE NO. 045-9000

DATE: OCTOBER 31, 2008