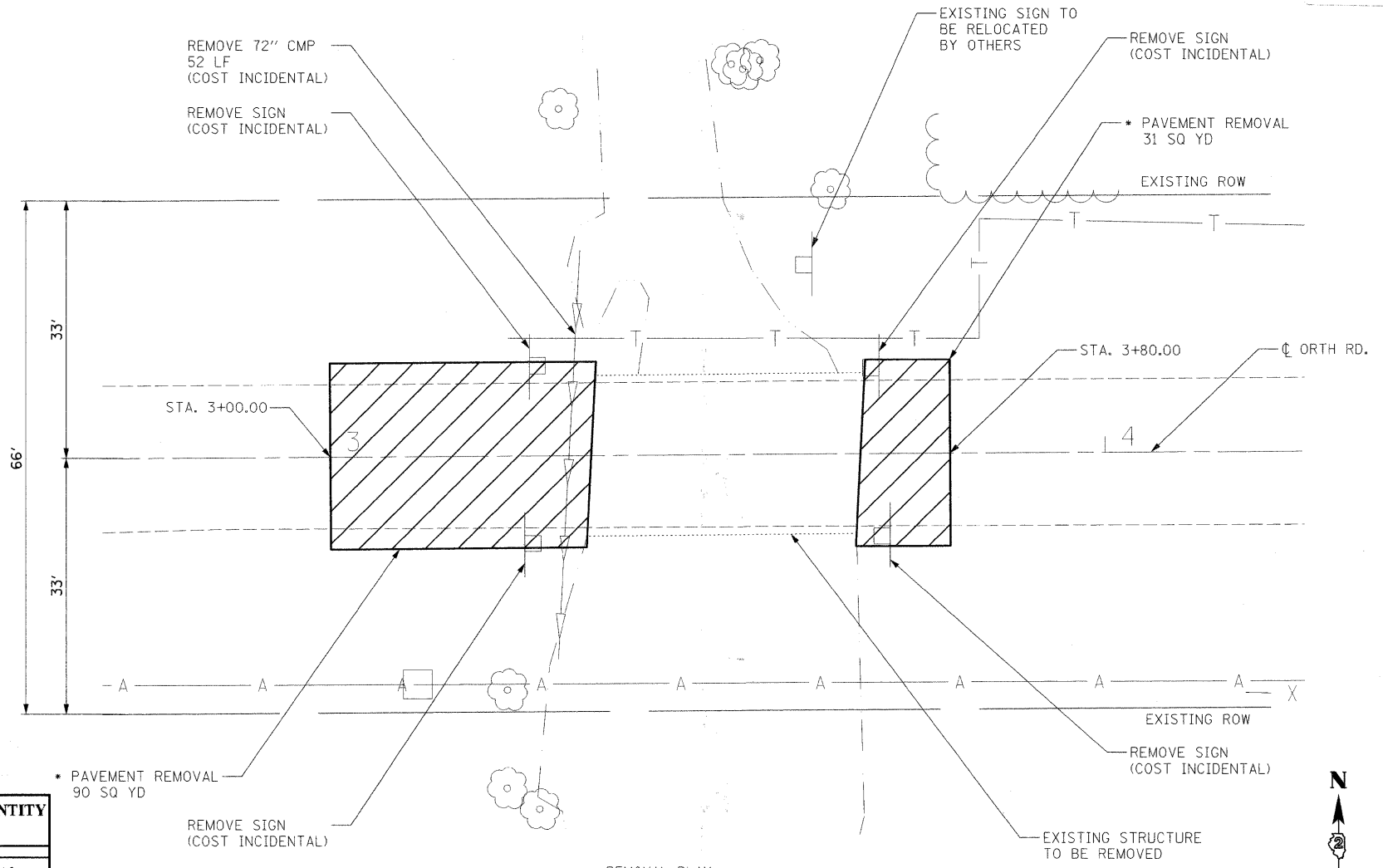


GENERAL NOTES

1. THE CONSTRUCTION SHALL BE GOVERNED BY THE "STANDARD SPECIFICATIONS FOR ROAD AND BRIDGE CONSTRUCTION IN ILLINOIS", CURRENT EDITION.
2. THE CONTRACTOR SHALL BE RESPONSIBLE FOR HAVING THE UTILITY COMPANIES LOCATE THEIR FACILITIES ON SITE PRIOR TO ANY CONSTRUCTION AND WILL BE HELD RESPONSIBLE FOR THE MAINTENANCE AND PRESERVATION OF THEIR FACILITIES. THE CONTRACTOR, ON SITE, SHALL DETERMINE THE EXACT LOCATIONS OF THE UTILITIES. THE CONTRACTOR SHALL CALL J.U.L.I.E. @ 1-800-892-0123 FOR UTILITY LOCATIONS.
3. THE CONTRACTOR WILL BE RESPONSIBLE FOR REPAIRS TO ANY UTILITY LINES AND EXISTING IMPROVEMENTS TO REMAIN THAT ARE DAMAGED AS A RESULT OF THE WORK.
4. ACCESS SHALL BE MAINTAINED TO ALL PROPERTIES DURING ALL STAGES OF CONSTRUCTION.
5. EXCESS MATERIAL, IF NOT USED FOR OTHER ON-SITE PURPOSES, SHALL BE COMPLETELY REMOVED FROM THE CONSTRUCTION SITE AND DISPOSED OF OFF-SITE BY THE CONTRACTOR.
6. THE WORK AREA SHALL BE POSITIVELY DRAINED DURING CONSTRUCTION. FINAL GRADES SHALL BE PROTECTED AGAINST DAMAGE FROM EROSION, SEDIMENTATION, AND TRAFFIC.
7. WHERE PROPOSED CONSTRUCTION ABUTS EXISTING APPURTENANCES, A SAWCUT SHALL BE MADE TO ACHIEVE A NEAT BUTT JOINT. THE SAWCUT IS TO BE INCLUDED IN THE COST OF THE CLASS D PATCHES.
8. WHERE SECTION OR SUBSECTION MONUMENTS ARE ENCOUNTERED, THE COUNTY ENGINEER SHALL BE NOTIFIED BEFORE SUCH MONUMENTS ARE REMOVED. THE CONTRACTOR SHALL PROTECT AND CAREFULLY PRESERVE ALL PROPERTY MARKERS AND MONUMENTS UNTIL THE OWNER, AN AUTHORIZED SURVEYOR OR AGENT HAS WITNESSED OR OTHERWISE REFERENCED THEIR LOCATION.
9. THE CONTRACTOR SHALL FIELD VERIFY ALL DIMENSIONS AND EXISTING CONDITIONS PRIOR TO CONSTRUCTION AND NOTIFY THE ENGINEER OF ANY DISCREPANCY IMMEDIATELY.



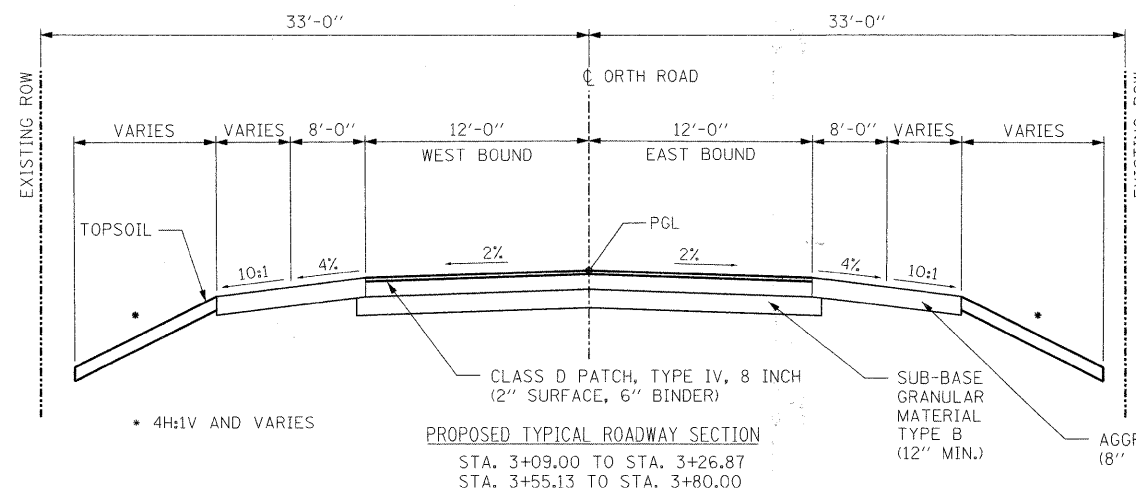
SUMMARY OF QUANTITIES

ITEM NUMBER	ITEM CONSTRUCTION TYPE CODE : X088-2A	UNIT	QUANTITY
* 20900110	POROUS GRANULAR BACKFILL	CU YD	410
25100630	EROSION CONTROL BLANKET	SQ YD	340
28000300	TEMPORARY DITCH CHECKS	EACH	9
28000400	PERIMETER EROSION BARRIER	FOOT	230
28100109	STONE RIPRAP, CLASS A5	SQ YD	85
28200200	FILTER FABRIC	SQ YD	85
* 31101000	SUB-BASE GRANULAR MATERIAL, TYPE B	TON	158
44201747	CLASS D PATCH, TYPE IV, 8 INCH	SQ YD	213
48101200	AGGREGATE SHOULDERS, TYPE B	TON	341
* 50100200	REMOVAL OF EXISTING STRUCTURES	L SUM	1
51500100	NAME PLATES	EACH	1
* 54021206	PRECAST CONCRETE BOX CULVERT 12' X 6' (M273)	FOOT	95
Δ 63000000	STEEL PLATE BEAM GUARDRAIL, TYPE A	FOOT	100
Δ 63000005	STEEL PLATE BEAM GUARDRAIL, TYPE B	FOOT	50
Δ* 63000155	STEEL PLATE BEAM GUARDRAIL, ATTACHED TO STRUCTURES (SPECIAL)	FOOT	75
Δ 63100045	TRAFFIC BARRIER TERMINAL, TYPE 2	EACH	2
Δ 63100167	TRAFFIC BARRIER TERMINAL, TYPE 1 (SPECIAL) TANGENT	EACH	2
Δ 67100100	MOBILIZATION	L SUM	1
* 70103700	TRAFFIC CONTROL COMPLETE	L SUM	1
Δ 78201000	TERMINAL MARKER - DIRECT APPLIED	EACH	2
* XX002053	LANDSCAPE RESTORATION	L SUM	1
* XX006821	CONCRETE TRUCK WASHOUT	L SUM	2
* Z0013798	CONSTRUCTION LAYOUT	L SUM	1
* Z0038700	PERMANENT BENCH MARKS	EACH	1
* XX007153	BOX CULVERT WINGWALL	EACH	4

Δ SPECIALTY ITEMS

* PAVEMENT REMOVAL 90 SQ YD

* COST OF PAVEMENT REMOVAL INCLUDED WITH CLASS D PATCH



	HMA SURFACE	HMA BINDER
PG GRADE	PG58-28	PG58-28
DESIGN AIR VOIDS	4% AT N50	4%
MIXTURE COMPOSITION	IL-9.5 OR IL-12.5	IL-19.0

STATE OF ILLINOIS
DEPARTMENT OF TRANSPORTATION

ORTH ROAD BOX CULVERT
GENERAL NOTES, SUMMARY OF QUANTITIES,
TYPICAL SECTION AND REMOVAL PLAN

SCALE: AS SHOWN SHEET NO. OF SHEETS STA. TO STA.

F.A. RTE.	SECTION	COUNTY	TOTAL SHEETS	SHEET NO.
5208	07-00081-0-BR	BOONE	12	2
CONTRACT NO.				
FED. ROAD DIST. NO. ILLINOIS FED. AID PROJECT				



FILE NAME = I:\08\jobs\081\CA001\Road\Sheet\201-GEN.dgn
DESIGNED - DPA
DRAWN - MWH
CHECKED - DPA
DATE - 10/17/08
REVIEWED - DPA
PLOT SCALE = AS SHOWN
PLOT DATE = 10/17/2008

LEI/OUT MWH 10/17/08
DRAWN MWH 10/17/08
REVIEWED DPA 10/17/08

