

STORM SEWER STRUCTURES & PIPES

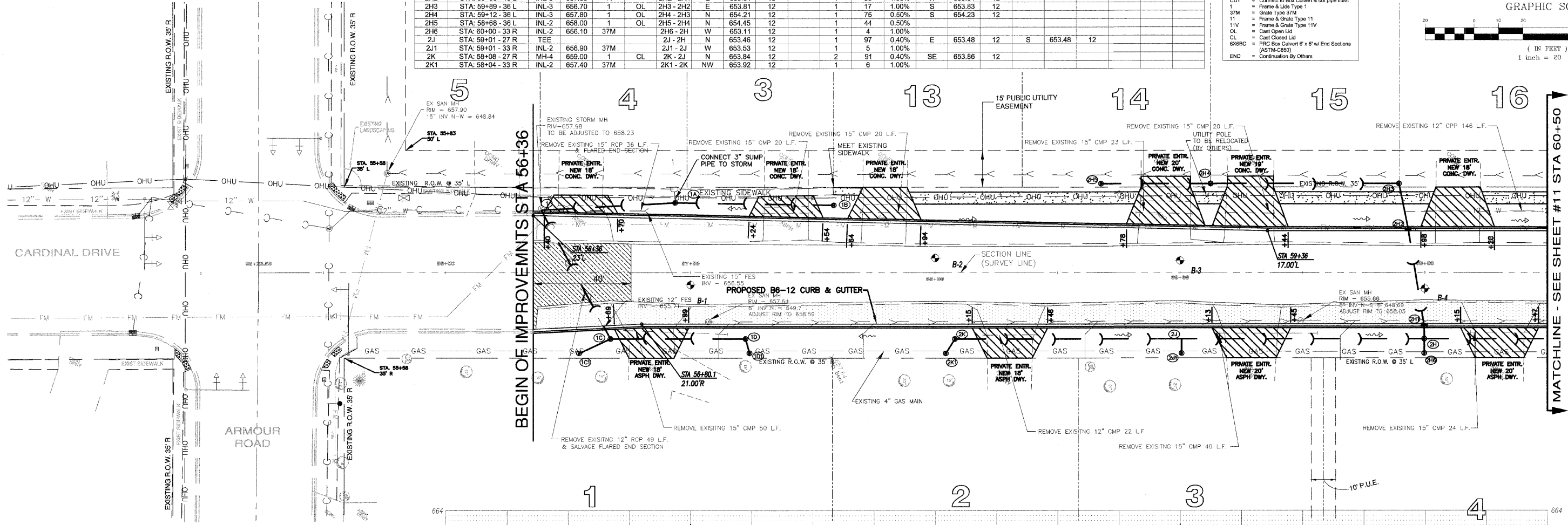
Structure ID	Structure Information				In Pipe				Out Pipe												
	Location	Type/ID	Rim Elev	IDOT Type Fr	Direction	Invert	Pipe Size (in)	Added Spec	Pipe Type	Length (ft)	Slope	Direction	Invert	Pipe Size (in)	Direction	Invert	Pipe Size (in)				
1	STA: 56+39 - 25 L	EXMH																			
1A	STA: 56+94 - 29 L	INL-3	658.20	37M	1A - 1	S	655.15	12	1	53	0.60%	N	654.83	12	NE	654.83	12				
1B	STA: 57+59 - 29 L	INL-2	658.20	37M	1B - 1A	S	655.49	12	1	64	0.50%										
1C	STA: 56+67 - 27 R	INL-3	658.30	1	CL	1C - 1	SW	654.95	12	1	58	0.20%	SE	654.97	12	N	654.97	12			
1C1	STA: 56+54 - 33 R	INL-2	657.50	37M	1C1 - 1C	NW	655.03	12	1	13	0.45%										
1D	STA: 57+22 - 27 R	INL-3	658.60	1	CL	1D - 1C	S	655.08	12	1	54	0.20%	NE	655.10	12						
1D1	STA: 57+24 - 33 R	INL-2	657.60	37M	1D1 - 1D	SW	655.13	12	1	5	0.50%										
2H	STA: 60+00 - 27 R	MH-4	657.50	1	CL	2H - 2G	N	652.17	18	1	105	0.20%	W	653.17	15	E	653.07	12	S	653.07	12
2H1	STA: 60+00 - 22 R	INL-3	657.40	11		2H1 - 2H	E	653.20	15	1	3	1.00%	W	653.22	15						
2H2	STA: 59+93 - 18 L	INL-3	657.60	11		2H2 - 2H1	E	653.61	15	1	39	1.00%	W	653.64	12						
2H3	STA: 59+89 - 36 L	INL-3	656.70	1	OL	2H3 - 2H2	E	653.61	12	1	17	1.00%	S	653.83	12						
2H4	STA: 59+12 - 36 L	INL-3	657.80	1	OL	2H4 - 2H3	N	654.21	12	1	76	0.50%	S	654.23	12						
2H5	STA: 58+68 - 36 L	INL-2	658.00	1	OL	2H5 - 2H4	N	654.45	12	1	44	0.50%									
2H6	STA: 60+00 - 33 R	INL-2	656.10	37M		2H6 - 2H	W	653.11	12	1	4	1.00%									
2J	STA: 59+01 - 27 R	TEE				2J - 2H	N	653.46	12	1	97	0.40%	E	653.48	12	S	653.48	12			
2J1	STA: 59+01 - 33 R	INL-2	656.90	37M		2J1 - 2J	W	653.53	12	1	5	1.00%									
2K	STA: 58+08 - 27 R	MH-4	659.00	1	CL	2K - 2J	N	653.84	12	2	91	0.40%	SE	653.86	12						
2K1	STA: 58+04 - 33 R	INL-2	657.40	37M		2K1 - 2K	NW	653.92	12	1	6	1.00%									

STORM STRUCTURE LEGEND

- EXMH = Existing manhole
- FES = FRC Flared End Section
- INL-2 = Inlet Ty A, 2 Dia
- INL-SP = Inlet Ty A, 2 Dia (Special)
- INL-3 = Inlet Ty B, 3 Dia
- CB-4 = Catch Basin Ty A, 4 Dia
- CB-5 = Catch Basin Ty A, 5 Dia
- MH-4 = Manhole Ty A, 4 Dia
- MH-5 = Manhole Ty A, 5 Dia
- MH-6 = Manhole Ty A, 6 Dia
- MH-7 = Manhole Ty A, 7 Dia
- REG-6 = Restrictor/CBASIN, 6 Dia
- TEE = RCP Inline Tee
- INL-SP = Inlet Type A (Special)
- TE = Connect to pipe
- CUT = Connect to Box Culvert & out pipe flush
- 37M = Frame & Grate Type 1
- 11 = Frame & Grate Type 11
- 11V = Frame & Grate Type 11V
- CL = Cast Closed Lid
- CL = Cast Closed Lid
- 6x6RC = FRC Box Culvert 6' x 6' w/ End Sections (ASTM-C450)
- END = Continuation By Others

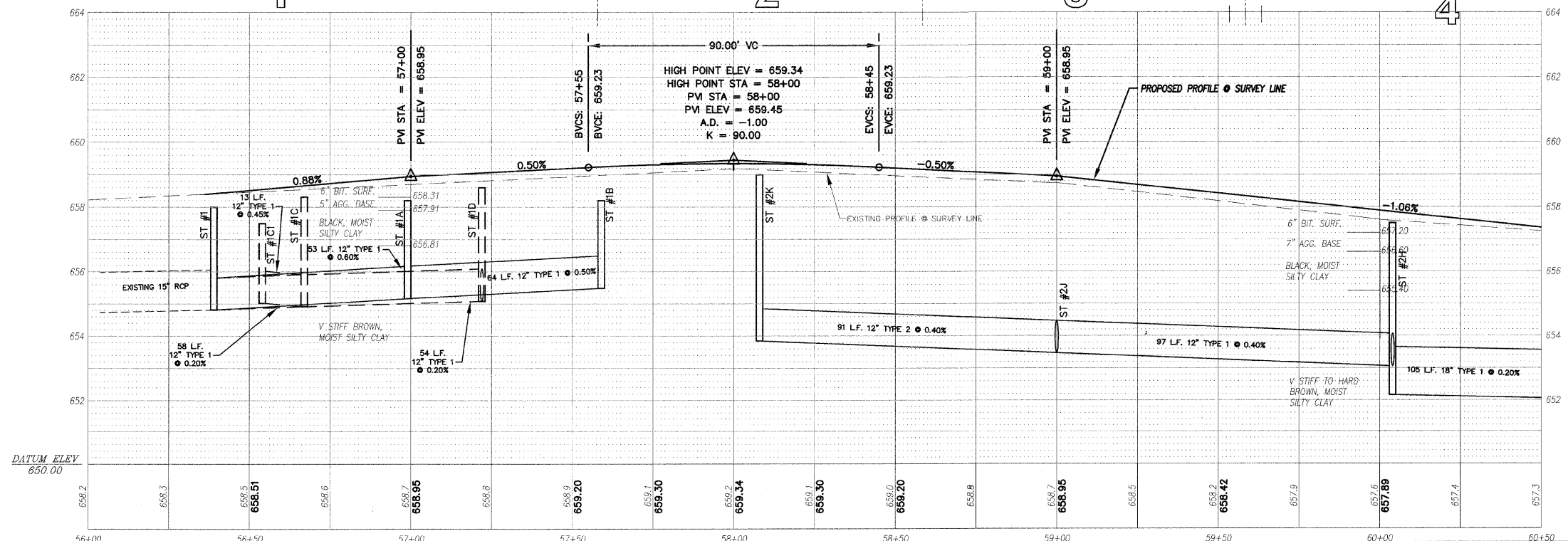
F.A.U. RTE.	SECTION	COUNTY	TOTAL SHEETS	SHEET NO.
6208	07-00093-00-RP	KANKAKEE	43	10
MG2A# M2-096			CONTRACT NO.: 87342	

GRAPHIC SCALE
1 inch = 20 ft.



LEGEND

- PAVEMENT WIDENING
- PAVEMENT REMOVAL
- BUTT JOINT
- PROPOSED STORM SEWER
- PROPOSED STORM STRUCTURE ID
- PROPOSED DRIVEWAY REPLACEMENT



M. GINGERICH, GERAUX & ASSOCIATES
240 N. Industrial Drive
Bradley, Illinois 60915
815-939-4921
FAX: 815-939-9810

DATE	BY	DESCRIPTION
2/11/08	AJC/JWP	PER IDOT REVIEW
3/27/08	JWP	PER IDOT REVIEW
4/1/08	JWP	PER REVIEWS
5/7/08	JWP	BKE WITH REVISION PER COMMENT

ILLINOIS DEPARTMENT OF TRANSPORTATION
PLAN & PROFILE SHEETS
CARDINAL DRIVE
STA. 56+36 TO STA. 60+50
SCALE: VERTICAL 1" = 2'
HORIZONTAL 1" = 20'
DATE: 1/4/08
DRAWN BY: MJO/AJC
CHECKED BY: JWP