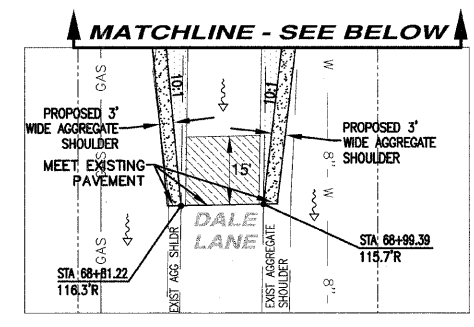


**STORM SEWER STRUCTURES & PIPES**

Structure Information				Out Pipe				In Pipe				In Pipe							
Structure ID	Location	Structure Type/Ø	Rim Elev	DOT Type Fr	Lid	Pipe Segment	Direction	Invert	Pipe Size (in)	Added Spec	Pipe Type	Length (ft)	Slope	Direction	In Pipe Invert	Pipe Size (in)	Direction	In Pipe Invert	Pipe Size (in)
2N4	STA: 67+51 - 27 R	TEE	659.70	37M		2N4 - 2N	S	656.93	12		1	135	1.50%	E	656.93	12	N	656.93	12
2N5	STA: 67+51 - 34 R	INL-2	661.20			2N5 - 2N4	W	656.99	12		1	6	1.00%						
2N6	STA: 67+84 - 28 R	INL-2	661.20		CL	2N6 - 2N4	S	657.41	12		1	32	1.50%						
3	STA: 72+23 - 27 R	MH-5	658.40		OL			654.00	EX 6" CPP					W	654.18	30	N	656.02	12
3A1	STA: 72+23 - 22 R	MH-5	659.30		11	3A1 - 3	E	654.20	30		1	3	0.30%	W	654.22	30	N	656.02	12
3A	STA: 72+23 - 15 R	MH-5	659.43		CL	3A - 3A1	E	654.24	30		1	5	0.30%	W	654.26	30	S	654.66	12
3A2	STA: 72+31 - 22 R	INL-2	659.30		11	3A2 - 3A1	S	656.08	12		1	6	1.00%						
3A3	STA: 72+23 - 18 L	MH-5	659.35		11	3A3 - 3A	E	654.36	30		1	31	0.30%	W	654.38	30	N	656.22	12
3A4	STA: 72+23 - 22 L	MH-4	659.90		CL	3A4 - 3A3	E	654.39	30		1	3	0.30%			SW	655.71	12	W
3A5	STA: 72+31 - 18 L	INL-2	659.35		11	3A5 - 3A3	S	656.28	12		1	6	1.00%						
3A6	STA: 72+11 - 42 L	INL-3	658.80		37M	3A6 - 3A4	NE	655.93	12		1	22	1.00%						
3A7	STA: 72+23 - 37 L	TIE				3A7 - 3A4	E	656.50	12		1	14	0.50%						
3B	STA: 71+30 - 15 R	TEE				3B - 3A	N	655.02	12		2	91	0.40%	E	655.02	12	S	655.02	12
3B1	STA: 71+30 - 33 R	INL-2	658.20		37M	3B1 - 3B	W	655.19	12		1	17	1.00%						
3B2	STA: 70+28 - 15 R	MH-4	661.00		CL	3B2 - 3B	N	655.42	12		2	101	0.40%	E	656.12	12			
3B3	STA: 70+25 - 33 R	INL-2	659.30		37M	3B3 - 3B2	W	656.29	12		1	17	1.00%						

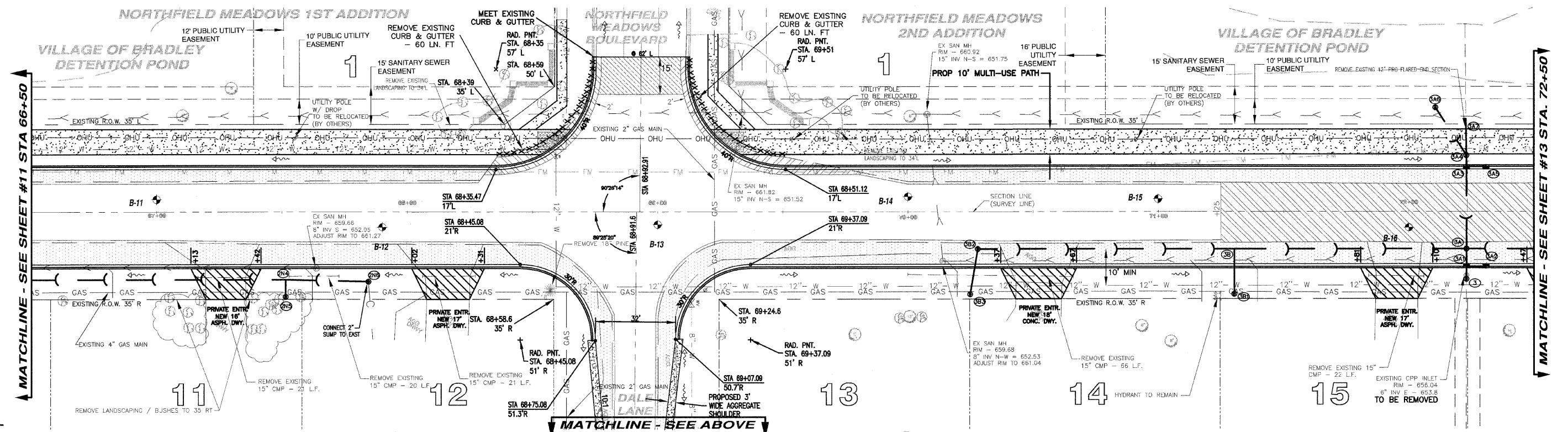
**STORM STRUCTURE LEGEND**

- EXMH = Existing manhole
- FES = PRC Flared End Section
- INL-2 = Inlet Ty A, 2 Dia
- INL-SP = Inlet Ty B, 3 Dia (Special)
- INL-3 = Inlet Ty B, 3 Dia
- CB-4 = Catch Basin Ty A, 4 Dia
- CB-5 = Catch Basin Ty A, 5 Dia
- MH-4 = Manhole Ty A, 4 Dia
- MH-5 = Manhole Ty A, 5 Dia
- MH-6 = Manhole Ty A, 6 Dia
- MH-7 = Manhole Ty A, 7 Dia
- REG-6 = Resistor GRASS, 6 Dia
- TEE = RCP Inline Tee
- INL-SP = Inlet Ty A (Special)
- TE = Connect to pipe
- CUT = Connect to Box Culvert & cut pipe flush
- 1 = Frame & Lids Type 1
- 37M = Grate Type 37M
- 11 = Frame & Grate Type 11
- 11V = Frame & Grate Type 11V
- OL = Cast Open Lid
- CL = Cast Closed Lid
- EXBCC = PRC Box Culvert 6' x 6' w/ End Sections (ASTM-C850)
- END = Continuation by Others



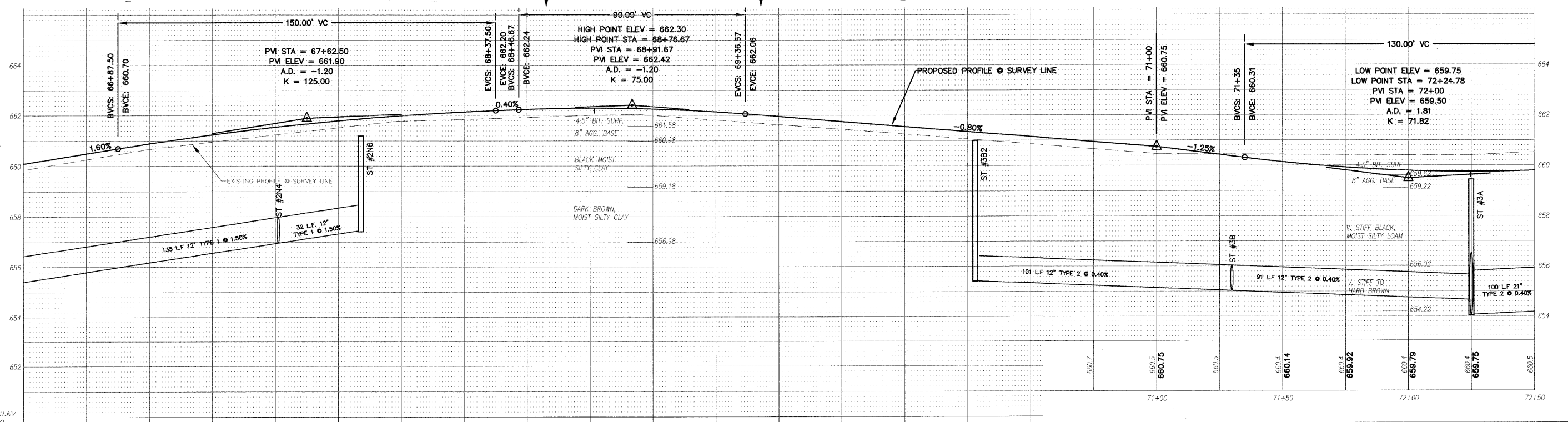
F.A.U. RTE.	SECTION	COUNTY	TOTAL SHEETS	SHEET NO.
6208	07-00093-00-RP	KANKAKEE	43	12
MG2A# M2-096			CONTRACT NO.: 87342	

GRAPHIC SCALE  
1 inch = 20 ft.



**LEGEND**

- PAVEMENT WIDENING
- PAVEMENT REMOVAL
- BUTT JOINT
- PROPOSED STORM SEWER
- PROPOSED STORM STRUCTURE ID
- PROPOSED DRIVEWAY REPLACEMENT



**M. GINGERICH, GEREAX & ASSOCIATES**  
240 N. Industrial Drive  
Bradley, Illinois 60915  
815-939-8921  
FAX: 815-939-9810

DATE	BY	DESCRIPTION
2/11/08	AJC/JWP	PER IDOT REVIEW
3/27/08	JWP	PER IDOT REVIEW
4/1/08	JWP	PER REVIEWS

ILLINOIS DEPARTMENT OF TRANSPORTATION  
PLAN & PROFILE SHEET  
CARDINAL DRIVE  
STA. 66+50 TO STA. 72+50

SCALE: VERTICAL 1" = 2'  
HORIZONTAL 1" = 20'

DATE: 1/4/08  
DRAWN BY: MJO/AJC  
CHECKED BY: JWP