

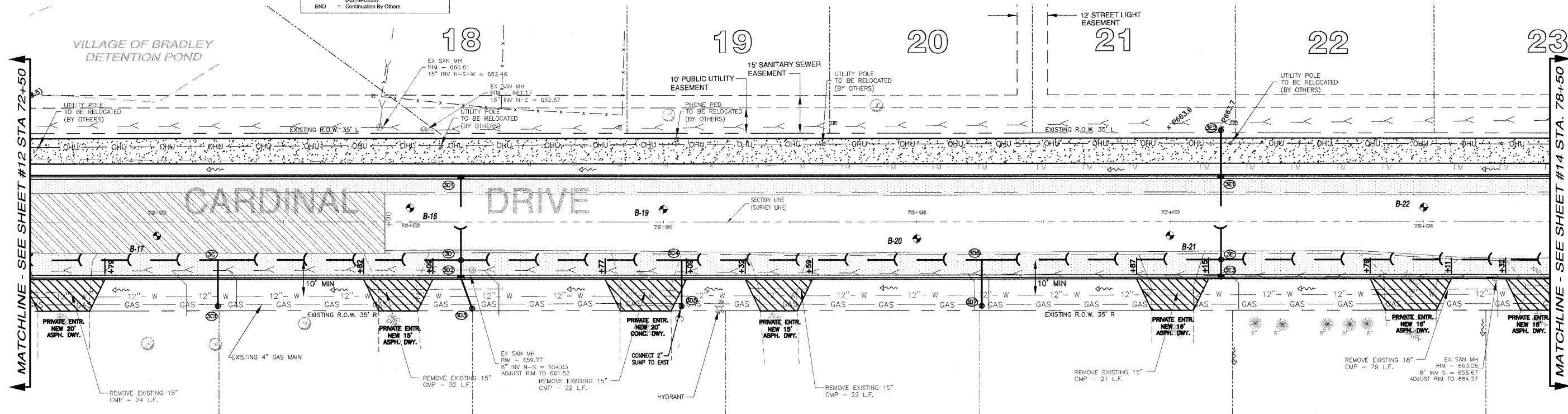
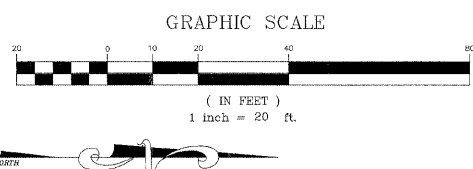
STORM SEWER STRUCTURES & PIPES

F.A.U. RTE.	SECTION	COUNTY	TOTAL SHEETS	SHEET NO.
6208	07-00093-00-RP	KANKAKEE	43	13
MG2A# M2-096			CONTRACT NO.: 87342	

STORM STRUCTURE LEGEND

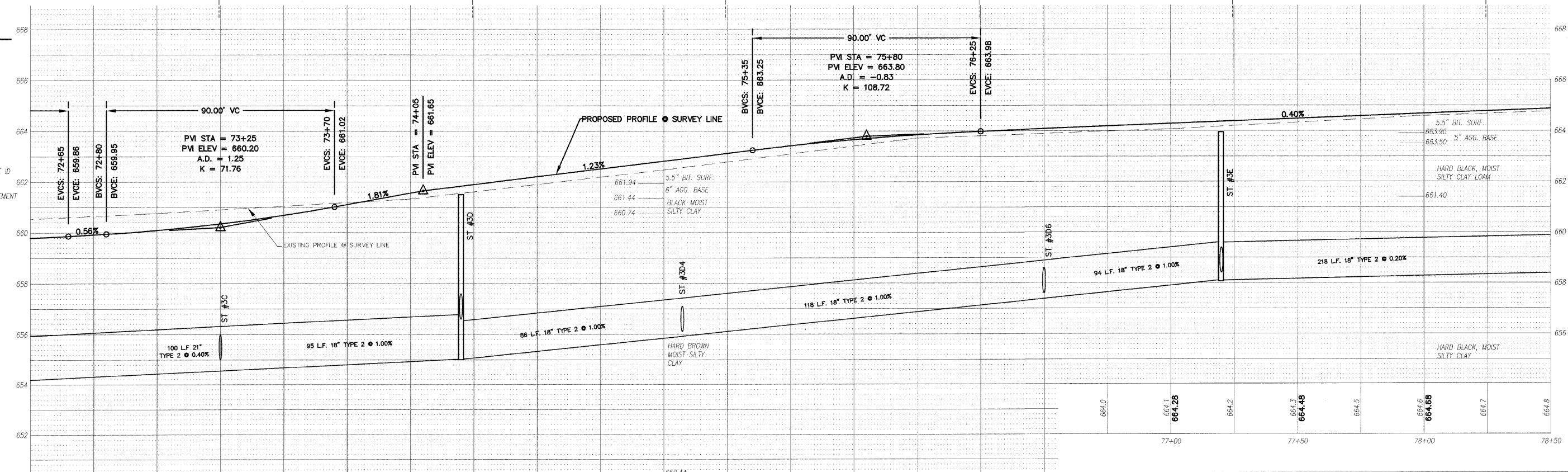
- EX-MH = Existing manhole
- FES = PRC Flared End Section
- INL-2 = Inlet Ty A, 2' Dia
- INL-SP = Inlet Ty A, 2' Dia (Special)
- INL-3 = Inlet Ty B, 3' Dia
- CB-4 = Catch Basin Ty A, 4' Dia
- CB-5 = Catch Basin Ty A, 5' Dia
- MH-4 = Manhole Ty A, 4' Dia
- MH-5 = Manhole Ty A, 5' Dia
- MH-6 = Manhole Ty A, 6' Dia
- MH-7 = Manhole Ty A, 7' Dia
- RES-6 = Resistor CBASIN, 6' Dia
- TEE = RCP Inlet Tee
- INL-SP = Inlet Type A (Special)
- TEE = Inlet Type A (Special)
- TIE = Connect to pipe
- CUT = Connect to Box Culvert & cut pipe flush
- 1 = Frame & Lids Type 1
- 37M = Orate Type 37M
- 11 = Frame & Grate Type 11
- 11V = Frame & Grate Type 11V
- OL = Cast Open Lid
- CL = Cast Closed Lid
- 6XBC = PRC Box Culvert 6' x 6' w/ End Sections (ASTM-C650)
- END = Continuation By Others

Structure Information										Out Pipe				In Pipe					
Structure ID	Location	Structure Type/Ø	Rim Elev	IDOT Type Fr	Lid	Pipe Segment	Direction	Invert	Pipe Size (in)	Added Spec	Pipe Type	Length (ft)	Slope	Direction	Invert	Pipe Size (in)	Direction	Invert	Pipe Size (in)
3C	STA: 73+24 - 15 R	TEE	658.10	37M		3C - 3A	S	654.66	21		2	100	0.40%	E	655.04	12	N	654.66	21
3C1	STA: 73+24 - 33 R	INL-2	658.10	37M		3C1 - 3C	W	655.21	12		1	17	1.00%						
3D	STA: 74+20 - 15 R	MH-4	661.45	1	CL	3D - 3C	S	655.04	21		2	95	0.40%	W	658.14	12	E	656.54	12
3D1	STA: 74+20 - 18 L	INL-2	661.45	11		3D1 - 3D	E	658.48	12		1	32	1.00%						
3D2	STA: 74+20 - 22 R	MH-4	661.45	11		3D2 - 3D	W	656.60	12		2	6	1.00%	NE	656.62	12			
3D3	STA: 74+24 - 34 R	INL-2	659.70	37M		3D3 - 3D2	SW	656.74	12		1	12	1.00%						
3D4	STA: 75+07 - 15 R	TEE	661.10	37M		3D4 - 3D	S	656.00	18		2	86	1.00%	E	656.25	12	N	656.00	18
3D5	STA: 75+07 - 33 R	INL-2	661.10	37M		3D5 - 3D4	W	657.07	12		1	17	4.80%						
3D6	STA: 76+26 - 15 R	TEE	661.40	37M		3D6 - 3D4	S	657.18	18		2	118	1.00%	E	657.43	12	N	657.18	18
3D7	STA: 76+26 - 33 R	INL-2	661.40	37M		3D7 - 3D6	W	657.60	12		1	17	1.00%						
3E	STA: 77+20 - 15 R	MH-4	664.01	1	CL	3E - 3D6	S	658.12	18		2	94	1.00%	W	659.70	12	E	659.74	12
3E1	STA: 77+20 - 18 L	INL-3	663.90	11		3E1 - 3E	E	660.02	12		1	32	1.00%	W	660.04	12	N	658.14	18
3E2	STA: 77+20 - 36 L	INL-2	663.70	37M		3E2 - 3E1	E	660.21	12		1	17	1.00%						
3E3	STA: 77+20 - 22 R	INL-2	663.80	11		3E3 - 3E	W	659.80	12		2	6	1.00%						



LEGEND

- PAVEMENT WIDENING
- PAVEMENT REMOVAL
- BUTT JOINT
- PROPOSED STORM SEWER
- PROPOSED STORM STRUCTURE ID
- PROPOSED DRIVEWAY REPLACEMENT



660.5	660.8	660.9	660.9	661.0	661.2	661.3	661.5	661.6	661.9	662.2	662.5	662.8	663.1	663.4	663.7	663.85	663.9	664.0	664.08
72+50	73+00	73+50	74+00	74+50	75+00	75+50	76+00	76+50	77+00	77+50	78+00	78+50							

240 N. Industrial Drive
Bradley, Illinois 60915
815-839-4921
FAX: 815-839-9810

REVISIONS

DATE	BY	DESCRIPTION
2/11/08	AJC/JWP	PER IDOT REVIEW
3/27/08	JWP	PER IDOT REVIEW

ILLINOIS DEPARTMENT OF TRANSPORTATION
PLAN & PROFILE SHEET
CARDINAL DRIVE
STA. 72+50 TO STA. 78+50

SCALE: VERTICAL 1" = 2'
HORIZONTAL 1" = 20'

DATE: 1/4/08 DRAWN BY: MJO/AJC
CHECKED BY: JWP