

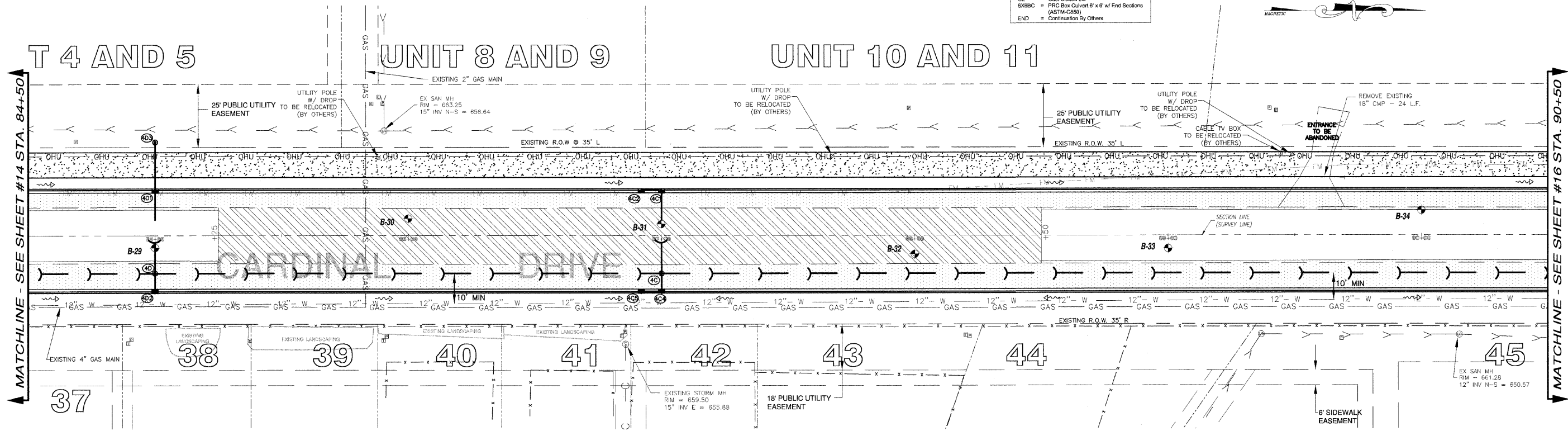
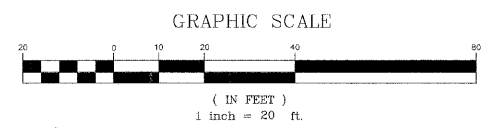
STORM SEWER STRUCTURES & PIPES

Structure Information					Out Pipe					In Pipe									
Structure ID	Location	Structure Type/Ø	Rim Elev	IDOT Type Fr	Lid	Pipe Segment	Direction	Invert	Pipe Size (in)	Added Spec	Pipe Type	Length (ft)	Slope	Direction	Invert	Pipe Size (in)	Direction	Invert	Pipe Size (in)
4C	STA: 87+00 - 15 R	MH-4	661.15	1	CL	4C - 4B	N	657.88	18		1	398	0.50%	W	657.90	12	E	657.90	12
4C1	STA: 87+00 - 18 L	INL-2	661.05	11		4C1 - 4C	E	658.22	12		1	32	1.00%	S	658.24	12			
4C2	STA: 86+92 - 18 L	INL-2	661.05	11		4C2 - 4C1	N	658.31	12		1	7	1.00%						
4C4	STA: 87+00 - 22 R	INL-3	660.95	11		4C4 - 4C	W	657.96	12		1	6	1.00%	S	657.98	12			
4C5	STA: 86+92 - 22 R	INL-2	660.95	11		4C5 - 4C4	N	658.05	12		1	7	1.00%						
4D	STA: 85+00 - 15 R	INL-3	664.50	1	CL	4D - 4C	N	660.87	12		1	198	1.50%	W	661.17	12	E	661.34	12
4D1	STA: 85+00 - 18 L	INL-3	664.50	11		4D1 - 4D	E	661.49	12		1	32	1.00%	W	661.51	12			
4D2	STA: 85+00 - 22 R	INL-2	664.40	11		4D2 - 4D	W	661.40	12		1	6	1.00%						
4D3	STA: 85+00 - 37 L	INL-2	664.30	37M		4D3 - 4D1	E	661.70	12		1	19	1.00%						

STORM STRUCTURE LEGEND

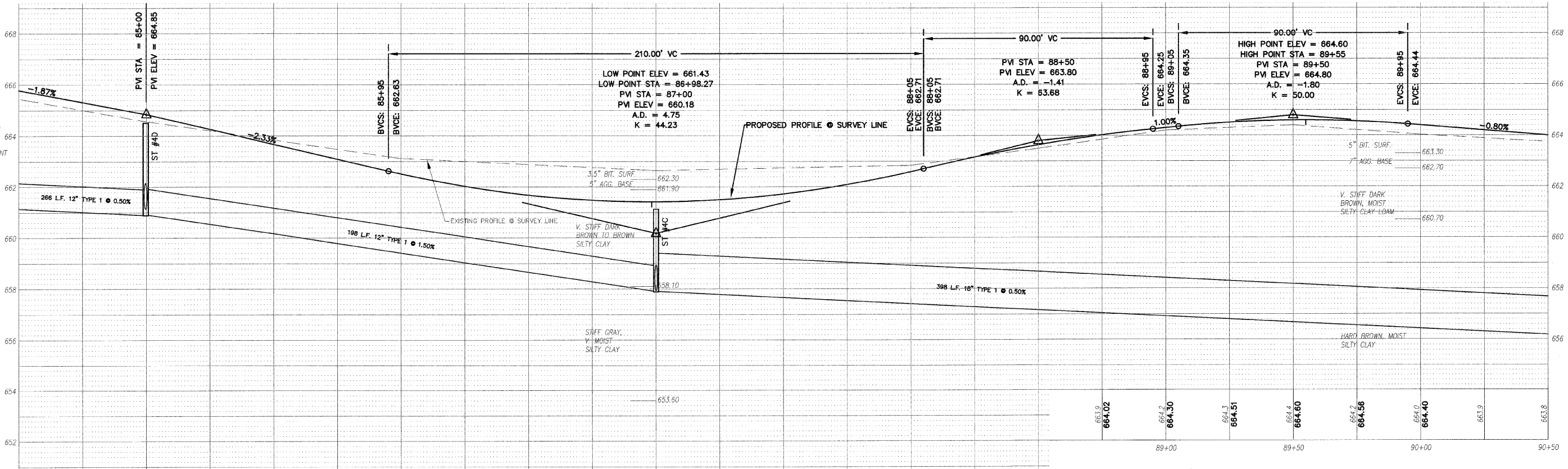
- EXMH = Existing manhole
- FES = PFR Flared End Section
- INL-2 = Inlet Ty A, 2' Dia
- INL-SP = Inlet Ty A, 2' Dia (Special)
- INL-3 = Inlet Ty B, 3' Dia
- CB-4 = Catch Basin Ty A, 4' Dia
- CB-5 = Catch Basin Ty A, 5' Dia
- MH-4 = Manhole Ty A, 4' Dia
- MH-5 = Manhole Ty A, 5' Dia
- MH-6 = Manhole Ty A, 6' Dia
- MH-7 = Manhole Ty A, 7' Dia
- RES-6 = Restrictor C/BASIN, 6' Dia
- TEE = RCP Inlet Tee
- INL-SP = Inlet Ty A (Special)
- TIE = Connect to pipe
- CUT = Connect to Box Culvert & cut pipe flush
- 1 = Frame & Lids Type 1
- 3/4M = Grate Type 3/4M
- 11 = Frame & Grate Type 11
- 11V = Frame & Grate Type 11V
- OL = Cast Open Lid
- CL = Cast Closed Lid
- 5X8XC = PFR Box Culvert 6' x 8' w/ End Sections (ASTM-C588)
- END = Continuation By Others

F.A.U. RTE.	SECTION	COUNTY	TOTAL SHEETS	SHEET NO.
6208	07-00093-00-RP	KANKAKEE	43	15
MG2A# M2-096			CONTRACT NO.: 87342	



LEGEND

- PAVEMENT WIDENING
- PAVEMENT REMOVAL
- BUTT JOINT
- PROPOSED STORM SEWER
- PROPOSED STORM STRUCTURE ID
- PROPOSED DRIVEWAY REPLACEMENT



Station	Elevation
84+50	665.79
85+00	665.0
85+00	664.6
85+00	664.85
85+00	664.2
85+00	663.9
85+00	663.68
85+00	663.5
86+00	663.7
86+00	662.52
86+00	663.0
86+00	662.03
86+00	662.9
86+00	661.69
86+00	662.8
86+00	661.49
87+00	662.7
87+00	661.43
87+00	662.7
87+00	661.73
87+00	662.8
87+00	662.09
88+00	662.8
88+00	662.60
88+00	663.2
88+00	663.17
88+00	663.5
88+00	663.64
89+00	664.02
89+00	664.0
89+00	664.3
89+00	664.51
89+00	664.4
89+00	664.56
89+00	664.0
89+00	663.9
90+00	664.0
90+00	663.9
90+00	663.8

240 N. Industrial Drive  
Bradley, Illinois 60915  
815-339-4921  
FAX: 815-339-9810

**REVISIONS**

DATE	BY	DESCRIPTION
7/11/08	AJC/WP	PER IDOT REVIEW
3/27/08	JWP	PER IDOT REVIEW

ILLINOIS DEPARTMENT OF TRANSPORTATION  
PLAN & PROFILE SHEET  
CARDINAL DRIVE

STA. 84+50 TO STA. 90+50

SCALE: VERTICAL 1" = 2'  
HORIZONTAL 1" = 20'

DATE: 1/4/08 DRAWN BY: MJO/AJC  
CHECKED BY: JWP