

STATE OF ILLINOIS
DEPARTMENT OF TRANSPORTATION
DIVISION OF HIGHWAYS

PLANS FOR PROPOSED HIGHWAY BRIDGE PROGRAM

RTE. NO.	SECTION	COUNTY	TOTAL SHEETS	SHEET NO.
CH 12	07-00118-00-BR	LOGAN	12	1
STA. 18+50		STA. 21+50		
FED. ROAD DIST.		ILLINOIS	FED. AID PROJECT	

COUNTY HIGHWAY C.H. **63E**
SECTION 07-00118-00-BR
LOGAN COUNTY
PROJECT NO. BROS-107(37)
JOB NO. C-96-230-08

INDEX OF SHEETS

SHEET NO.	DESCRIPTION
1	COVER SHEET
2	SUMMARY OF QUANTITIES AND TYPICAL SECTIONS
3	PLAN AND PROFILE
4	SHOULDER AND GUARDRAIL DETAILS
5-9	CROSS SECTIONS
10	GENERAL PLAN & ELEVATION
11	CULVERT LAYOUT
12	CULVERT DETAILS

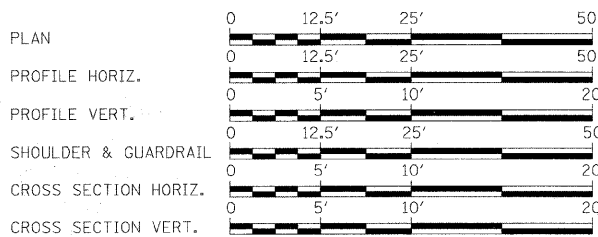
HIGHWAY STANDARDS (See Special Provisions)

280001-04	TEMPORARY EROSION CONTROL SYSTEMS
515001-03	NAME PLATE FOR BRIDGES
630101-08	STEEL PLATE BEAM GUARDRAIL, ATTACHED TO STRUCTURES
631011-05	TRAFFIC BARRIER TERMINAL, TYPE 2
635006-03	REFLECTOR AND TERMINAL MARKER PLACEMENT
701901-01	TRAFFIC CONTROL DEVICES
BLR 21-8	TYPICAL APPLICATION OF TRAFFIC CONTROL DEVICES FOR CONSTRUCTION ON RURAL LOCAL HIGHWAYS
BLR 23-3	TRAFFIC BARRIER TERMINAL, TYPE 1
BLR 26-1	STEEL PLATE BEAM GUARDRAIL (27 1/2" HEIGHT)

UTILITIES

AMEREN -CILCO	309-693-4839
VERIZON NORTH, INC.	309-827-1617
MENARD ELECTRIC COOP	217-632-7746

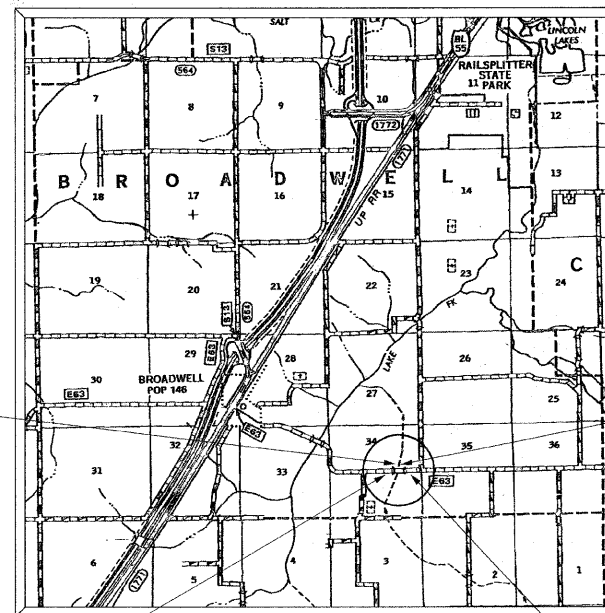
TOLL FREE JOINT UTILITY LOCATING
INFORMATION FOR EXCAVATORS (J.U.L.I.E.)
TELEPHONE NUMBER 1-800-892-0123



FULL SIZE PLANS HAVE BEEN PREPARED USING STANDARD ENGINEERING SCALES. REDUCED SIZED PLANS WILL NOT CONFORM TO STANDARD SCALES. IN MAKING MEASUREMENTS ON REDUCED PLANS, THE ABOVE SCALES MAY BE USED.

CONTRACT NO. 93473

R. 3 W. 3RD P.M.



EXISTING STRUCTURE:
STA. 20+00
TRIPLE 9'x4.5' BOX CULVERT
36' LONG ON 16° SKEW, L.A.
S.N. 054-3908

PROPOSED STRUCTURE:
STA 20+00
TRIPLE 9'x6' BOX CULVERT
46' LONG ON 15° SKEW, L.A.
SN 054-3921

IMPROVEMENT BEGINS
STA 18+50.00

IMPROVEMENT ENDS
STA 21+50.00

LOCATION MAP



TOTAL AND NET LENGTH OF PROJECT = 300.00 FT = 0.058 MI
STRUCTURE LENGTH (BK.-BK. ABUT.) = 30.7'

ROADWAY CLASSIFICATION: MINOR COLLECTOR
ADT: 275
DESIGN SPEED: 40 MPH
DESIGN GUIDELINES: RURAL

JENNIFER L. SIEBERT
REGISTERED PROFESSIONAL ENGINEER
STATE OF ILLINOIS NO. 062-056583
LICENSE EXPIRES NOVEMBER 30, 2009
Jennifer L. Siebert 7-1-08
JENNIFER L. SIEBERT DATE

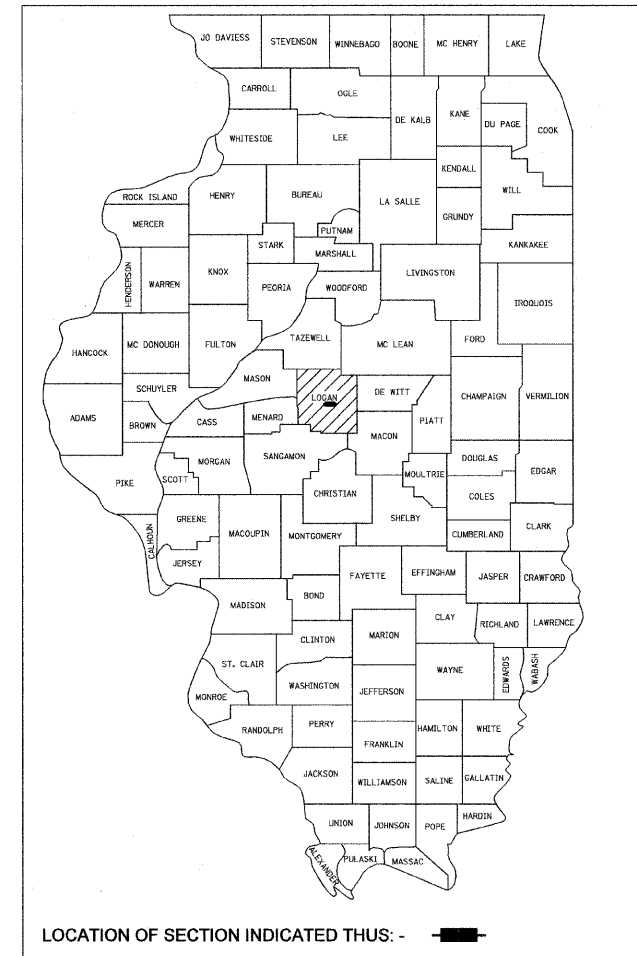
LICENSE NO. 062-056583 PLANS PREPARED BY:



PSBA

POEPPING, STONE, BACH & ASSOCIATES, INC.
100 SOUTH 54TH STREET QUINCY, ILLINOIS 62306
PH: (217) 223-4605 FAX: (217) 223-1546
E-MAIL: PSBA@PSBA.COM WWW.PSBA.COM

PRINTED BY THE AUTHORITY OF THE STATE OF ILLINOIS



LOCATION OF SECTION INDICATED THIS: - [Black Rectangle] -

APPROVED July 17 20 08
B. J. A. Alty
LOGAN COUNTY ENGINEER

PASSED October 8 20 08
Revenue Committee
DISTRICT SIX ENGINEER OF LOCAL ROADS & STREETS

PASSED October 6 20 08
Don Dehambauer
DISTRICT SIX ENGINEER OF CONSTRUCTION

RELEASING FOR BID BASED ON LIMITED REVIEW: October 8 20 08
Roger Driskelle
DEPUTY DIRECTOR OF HIGHWAYS, REGION FOUR ENGINEER

STATE OF ILLINOIS
DEPARTMENT OF TRANSPORTATION

DATE	BY

PLAN
NO. _____
NOTE BOOK _____
NO. _____
CHECKED _____
DATE FILE NAME _____

DATE	BY

PROFILE
NO. _____
NOTE BOOK _____
NO. _____
CHECKED _____
DATE FILE NAME _____