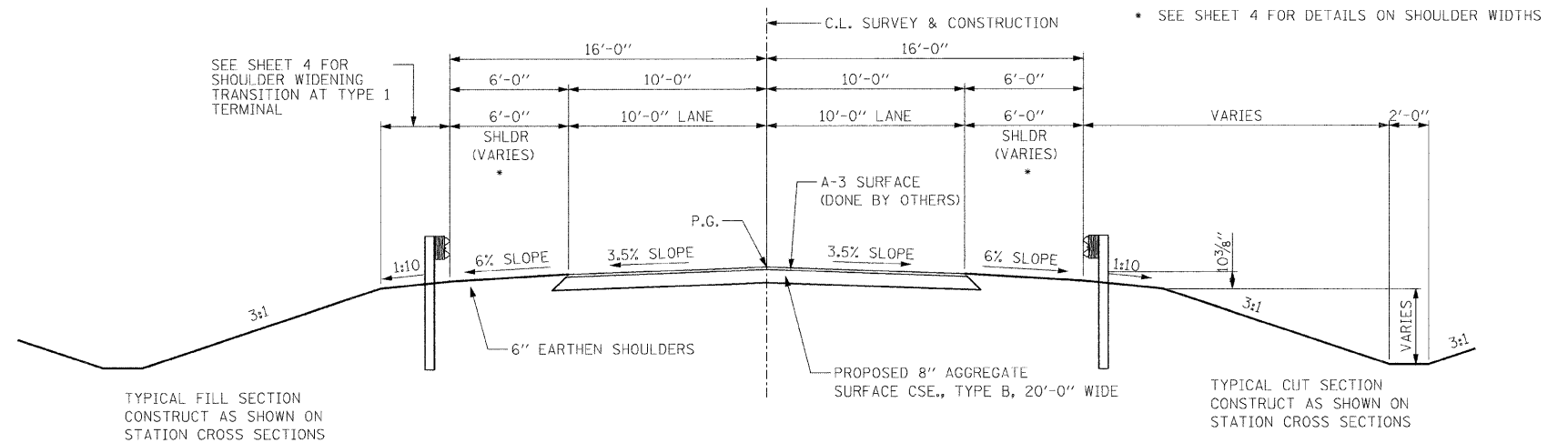
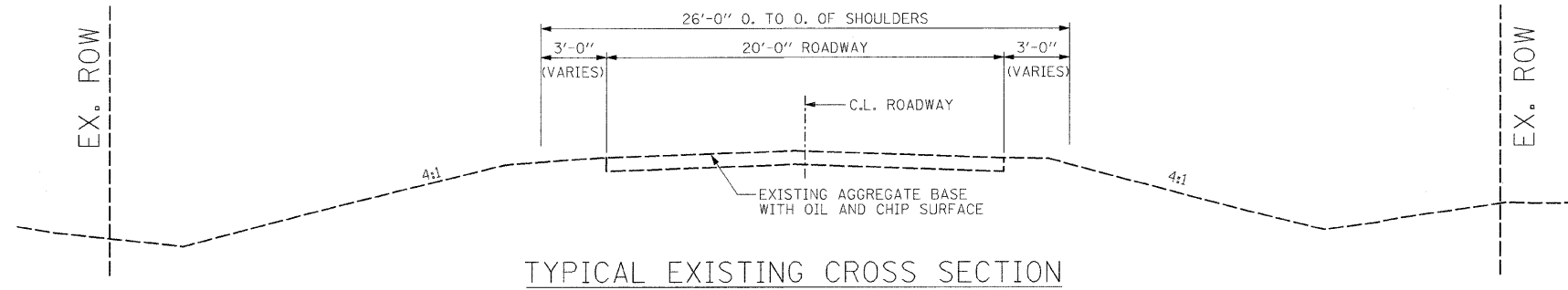


SUMMARY OF QUANTITIES

RTE. NO.	SECTION	COUNTY	TOTAL SHEETS	SHEET NO.
CH 12	07-00118-00-BR	LOGAN	12	2
STA. 18+50		STA. 21+50		
FED. ROAD DIST.	ILLINOIS	FED. AID PROJECT		

CODE NO.	ITEM	UNIT	QUANTITY
20200100	EARTH EXCAVATION	CU. YD.	310
28000250	TEMPORARY EROSION CONTROL SEEDING	POUND	28
28000300	TEMPORARY DITCH CHECKS	EACH	4
28000400	PERIMETER EROSION BARRIER	FOOT	50
* 28100825	STONE DUMPED RIPRAP, CLASS B3	TON	56
28200200	FILTER FABRIC	SQ. YD.	167
40200800	AGGREGATE SURFACE COURSE, TYPE B	TON	320
* 50100200	REMOVAL OF EXISTING STRUCTURES	L. SUM	1
50200100	STRUCTURE EXCAVATION	CU. YD.	71
50800105	REINFORCEMENT BARS	POUND	19840
51500100	NAME PLATES	EACH	1
54003000	CONCRETE BOX CULVERTS	CU. YD.	143.9
Δ * 63000025	STEEL PLATE BEAM GUARDRAIL, ATTACHED TO STRUCTURES	FOOT	75
Δ * 63100045	TRAFFIC BARRIER TERMINAL, TYPE 2	EACH	2
67100100	MOBILIZATION	L. SUM	1
* 70101700	TRAFFIC CONTROL AND PROTECTION	L. SUM	1
Δ 78201000	TERMINAL MARKER - DIRECT APPLIED	EACH	2
Δ LR631020	TRAFFIC BARRIER TERMINAL, TYPE 1	EACH	2
* X0324118	GRANULAR CULVERT BACKFILL	CU. YD.	170

* SEE SPECIAL PROVISIONS
 Δ SPECIALTY ITEMS
 CONSTRUCTION TYPE CODE: X028-2A



TYPICAL FILL SECTION
 CONSTRUCT AS SHOWN ON
 STATION CROSS SECTIONS

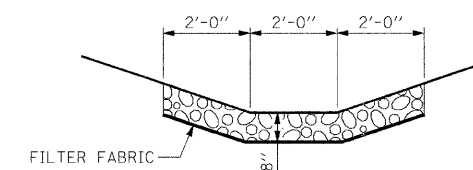
TYPICAL CUT SECTION
 CONSTRUCT AS SHOWN ON
 STATION CROSS SECTIONS

TYPICAL PROPOSED CROSS SECTION

STA. 18+50.00 TO STA. 21+50.00

GENERAL NOTES

THE NOTED APPLICATION RATES ARE FOR QUANTITY CALCULATIONS ONLY. THE APPLICATION RATE TO BE APPLIED WILL BE DETERMINED BY THE ENGINEER AT THE TIME OF PLACEMENT.
 SEEDING WILL BE DONE BY OTHERS.
 THE JOINT DETAIL AT THE BEGINNING AND END OF IMPROVEMENT TO BE CONSTRUCTED AS DIRECTED BY THE ENGINEER.
 WHERE SECTION OR SUBSECTION MONUMENTS ARE ENCOUNTERED, THE ENGINEER SHALL BE NOTIFIED BEFORE SUCH MONUMENTS ARE REMOVED. THE CONTRACTOR SHALL PROTECT AND CAREFULLY PRESERVE ALL PROPERTY MARKS AND MONUMENTS UNTIL THE OWNER, AND AUTHORIZED SURVEYOR OR AGENT HAS WITNESSED OR OTHERWISE REFERENCED THEIR LOCATION.
 ALL EROSION PROTECTION TO BE PLACED AS DIRECTED BY THE ENGINEER.
 WHERE THE 36"Ø PIPE IS REMOVED, THE REMAINING VOID SHALL BE FILLED WITH SOME OF THE REMAINING WASTE FROM EARTHWORK.



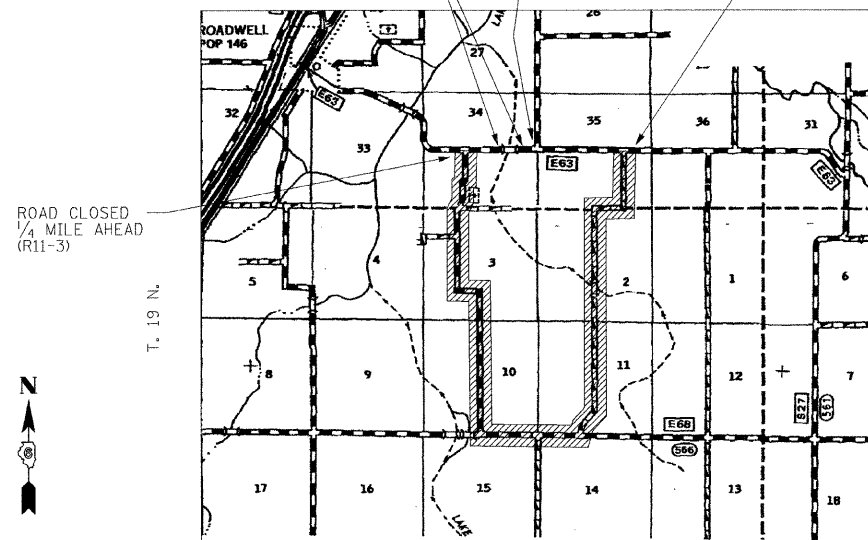
RIPRAP LINED DITCH DETAIL

STONE DUMPED RIPRAP, CLASS B3
 FOR SLOPES, SEE CROSS SECTIONS

APPLICATION RATES USED
 IN QUANTITY CALCULATIONS

STONE RIPRAP 1.5 TON / CU. YD.
 AGGREGATE BASE 2.05 TON / CU. YD.

BARRICADES AND SIGNS SHALL BE INSTALLED AT BOTH END OF CULVERT AS PER STANDARD BLR 21, CONDITION 1
 ROAD CLOSED 1/4 MILE AHEAD (R11-3)
 ROAD CLOSED 1 MILE AHEAD (R11-3)



SIGNING FOR ROAD CLOSURE AND DETOUR

FILE NAME = R07013.PLAN.dgn	USER NAME = default	DESIGNED - JLS	REVISED -
		DRAWN - JLS	REVISED -
	PLOT SCALE = 0.0033' / IN.	CHECKED - DJK	REVISED -
	PLOT DATE = 7/1/2008	DATE - JUN 2008	REVISED -

STATE OF ILLINOIS
 DEPARTMENT OF TRANSPORTATION

SUMMARY OF QUANTITIES & TYPICAL SECTIONS

SCALE: SHEET NO. 1 OF 1 SHEETS STA. 15+00 TO STA. 25+00

F.A. RTE.	SECTION	COUNTY	TOTAL SHEETS	SHEET NO.
	07-00118-00-BR	LOGAN	12	2
CONTRACT NO.				
FED. ROAD DIST. NO.	ILLINOIS	FED. AID PROJECT		