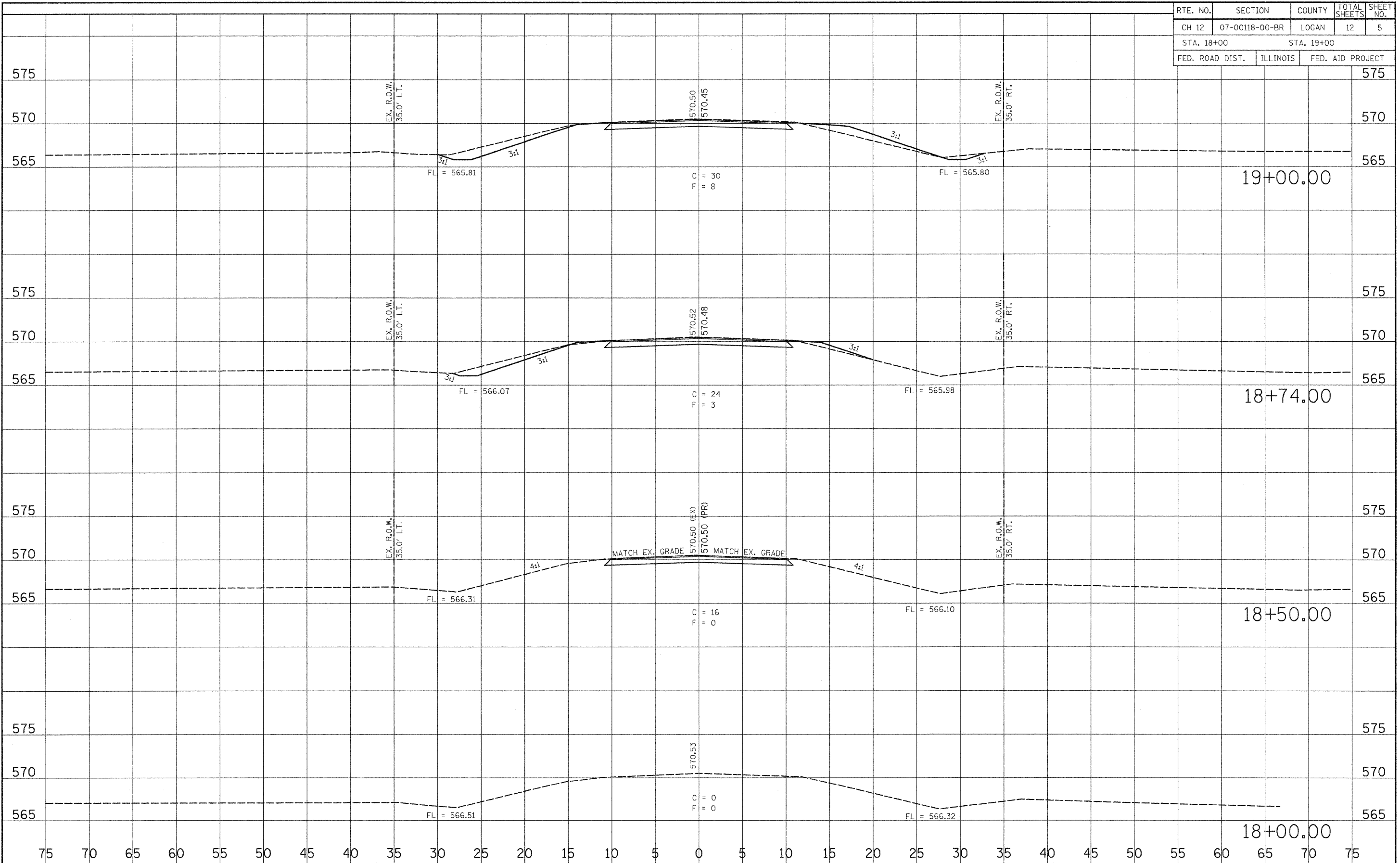


RTE. NO.	SECTION	COUNTY	TOTAL SHEETS	SHEET NO.
CH 12	07-00118-00-BR	LOGAN	12	5
STA. 18+00		STA. 19+00		
FED. ROAD DIST.	ILLINOIS	FED. AID PROJECT		



FILE NAME = R07013_PLA.dgn	USER NAME = default	DESIGNED - JLS	REVISED -
		DRAWN - JLS	REVISED -
		CHECKED - DJK	REVISED -
		DATE - JUN 2008	REVISED -

**STATE OF ILLINOIS  
DEPARTMENT OF TRANSPORTATION**

<b>CROSS SECTIONS</b>	
SCALE:	SHEET NO. 1 OF 5 SHEETS STA. 18+00 TO STA. 19+00

F.A. RTE.	SECTION	COUNTY	TOTAL SHEETS	SHEET NO.
	07-00118-00-BR	LOGAN	12	5
CONTRACT NO.				
FED. ROAD DIST. NO.	ILLINOIS	FED. AID PROJECT		