

B.M.: RR Spike in Power Pole,
±600' W. of Bridge, N. Side of Road
House # 615
Elev. 492.94

Chiseled "a" on Step at E. Retaining Wall
Entrance Ramp to High Ridge Pork
Sta. 55±37, ±34' Lt.
Elev. 482.92

Existing Structure:

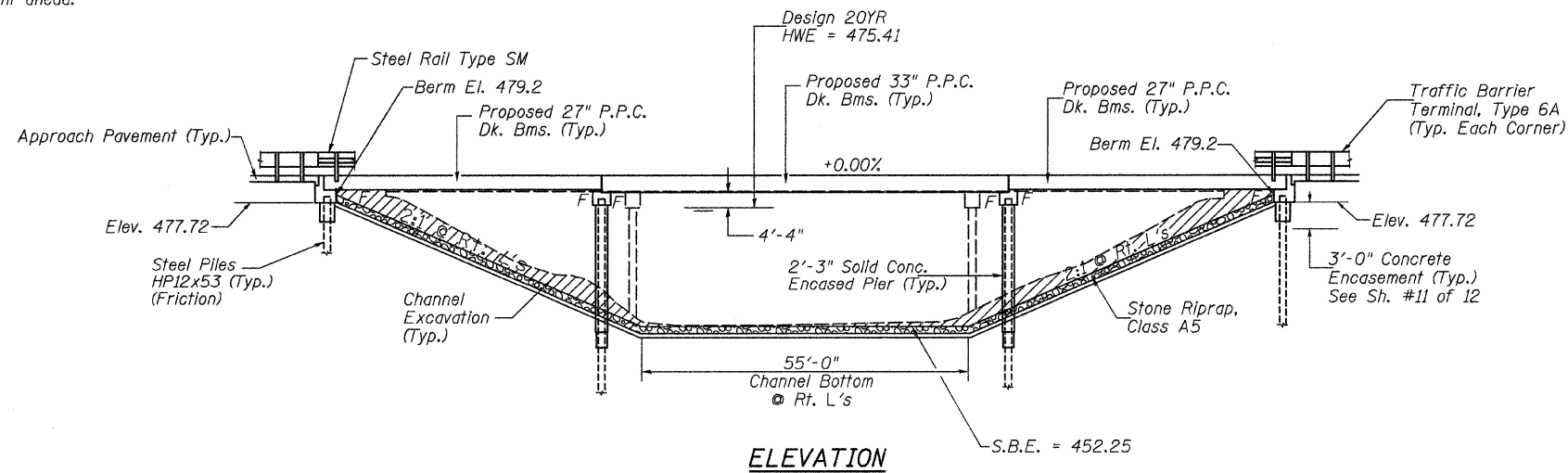
Three span reinforced concrete deck on steel stringers
superstructure supported on pile bent spill thru abutments
and multi-column concrete pile bent piers. The structure
is ±172' back to back of abutments, ±25' out to out of
deck and is skewed 30° right ahead.
Str. No. 009-3032

Salvage: None

Road to be closed to traffic
during construction.

ROUTE NO.	SECTION	COUNTY	TOTAL SHEETS	SHEET NO.
CH 9	*	CASS	29	8
FED. ROAD DIST. NO. 7	ILLINOIS	PROJECT	BRS-580(105)	
*04-00068-00-BR		CONTRACT * 93474		

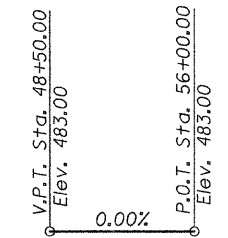
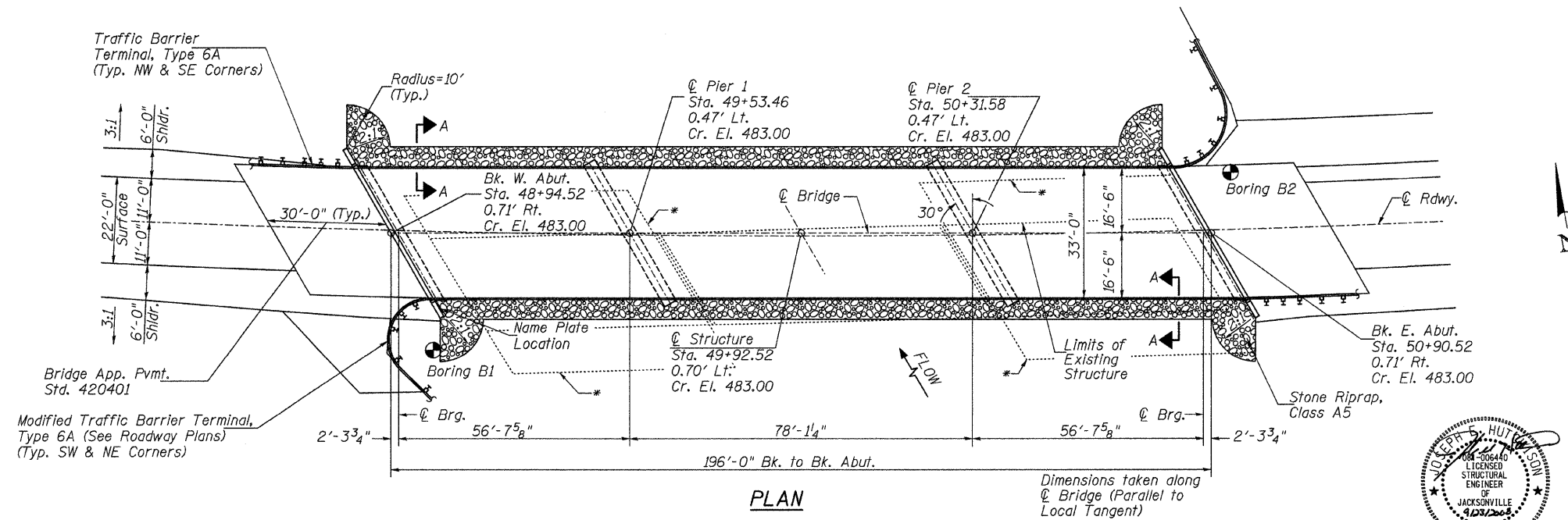
NOTE:
For Section A-A, Additional Details, Bill of Material,
and General Notes, See Sheet 2 of 12.



**INDIAN CREEK
BUILT 200... BY
CASS COUNTY
SEC. 04-00068-00-BR
C.H. 9 STATION 49+92.52
F.A. PROJ. BRS-580(105)
STR. NO. 009-3033 LOADING HL-93**

NAME PLATE

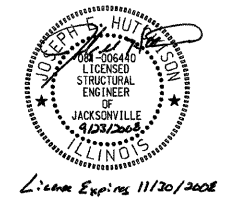
Locate Name Plate at S.W. Wingwall
Corner of Bridge (See Std. 515001)



CURVE DATA

PI STA. = 50+56.21
Δ = 16° 40' 49" (LT)
D = 1° 40' 48"
R = 3,410.63'
T = 500.00'
L = 992.93'
E = 36.46'
P.C. STA. = 45+56.21
P.T. STA. = 55+49.14
S.E. = N/A

I certify that to the best of my knowledge, information and belief, this bridge design is structurally adequate for the design loading shown on the plans. The design is an economical one for the style of structure and complies with requirements of the current AASHTO LRFD Bridge Design Specifications.
This design complies with all requirements of the current AASHTO Guide Specifications for Seismic Design of highway bridges.



Joseph S. Hutcheson 9/23/2008
Illinois Structural No. 6440
Expires 11/30/2008

DESIGN SPECIFICATIONS
2007 AASHTO (LRFD) & Interims

DESIGN STRESSES

(FIELD UNITS) (PRECAST PRESTRESSED UNITS)
f'c = 3,500 p.s.i. f'c = 6,000 p.s.i.
fy = 60,000 p.s.i. (Rein.) f'ci = 5,000 p.s.i.
f's = 270,000 p.s.i. (1/2" Strands)
f'si = 201,960 p.s.i. (1/2" Strands)

LOADING HL-93

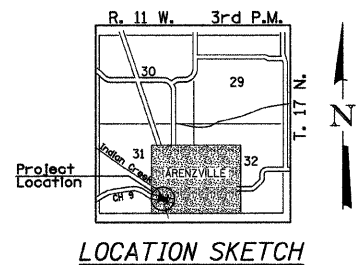
Allow 50#/sq. ft. for future wearing surface.

WATERWAY INFORMATION

Drainage Area = 167.4 Sq. Mi. Low Grade Elev. = 483.00 @ Sta. 49+92.52

Flood	Freq. Yr.	Q C.F.S.	Opening Sq. Ft.		Head - Ft.		Headwater El.		
			Exist.	Prop.	H.W.E. Exist.	Prop.	Exist.	Prop.	
Design	20	9,681	1,987	2,266	475.41	0.07	0.03	475.48	475.44
Base	100	14,324	2,151	2,452	476.70	0.56	0.46	477.26	477.16

Construction of this project complies with IDNR,
Office of Water Resources Statewide Permit No. 2



GENERAL PLAN & ELEVATION
COUNTY HIGHWAY 9 OVER
INDIAN CREEK
SEC. 04-00068-00-BR
CASS COUNTY
STR. NO. 009-3033
STATION 49+92.52

DESIGNED	J.O.H./C.T.M.
CHECKED	J.E.H.
DRAWN	C.E.T./T.A.C.
CHECKED	J.E.H.