

F.A.I. RTE.	SECTION	COUNTY	TOTAL SHEETS	SHEET NO.
70		FAYETTE	59	1
FED. ROAD DIST. NO.	ILLINOIS	CONTRACT NO. 94993		

• D-7 BRIDGE DECK REPAIRS

D-97-028-03



STATE OF ILLINOIS  
DEPARTMENT OF TRANSPORTATION  
DIVISION OF HIGHWAYS

**PROPOSED  
HIGHWAY PLANS**

F.A.I. ROUTE 70 (I-70)  
SECTION D-7 BRIDGE DECK REPAIRS  
PROJECT: IM-070-2(230)059  
FAYETTE COUNTY  
C-97-041-03

FOR INDEX OF SHEETS, SEE SHEET NO. 2

STATION EQUATION:  
1610 + 33.67 (BK) = STA. 90 + 55.19 (AH)

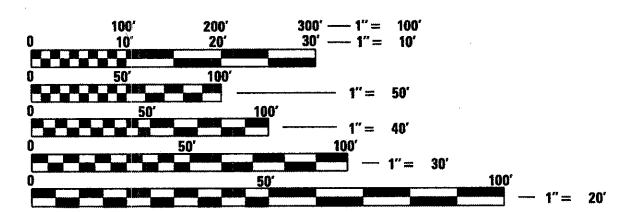
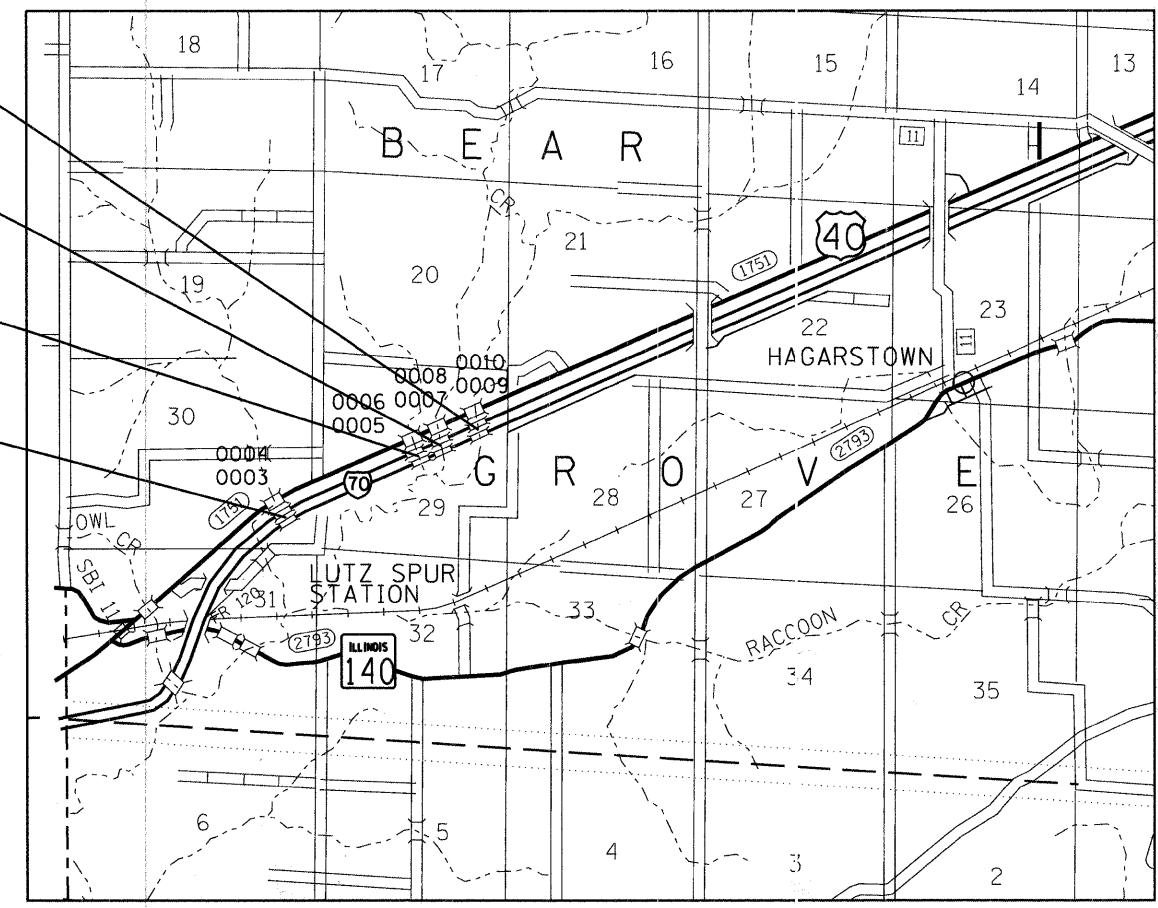
2007 ADT: 21,100 (46% TRUCKS)

STR. NOS:  
026-0009 & 026-0010

STR. NOS.:  
026-0007 & 026-0008

STR. NOS.:  
026-0005 & 026-0006

STR. NOS.:  
026-0003 & 026-0004



FULL SIZE PLANS HAVE BEEN PREPARED USING STANDARD ENGINEERING SCALES. REDUCED SIZED PLANS WILL NOT CONFORM TO STANDARD SCALES. IN MAKING MEASUREMENTS ON REDUCED PLANS, THE ABOVE SCALES MAY BE USED.

J.U.L.I.E.  
JOINT UTILITY LOCATION INFORMATION FOR EXCAVATION  
1-800-892-0123  
OR 811

PROJECT ENGINEER: MIKE ALLEN  
PROJECT MANAGER: KAREN THOLE  
GROVE TOWNSHIP  
CONTRACT NO 94993

GROSS LENGTH = 7081 FEET = 1.34 MILE  
NET LENGTH = 7081 FEET = 1.34 MILE

STATE OF ILLINOIS  
DEPARTMENT OF TRANSPORTATION  
DIVISION OF HIGHWAYS

SUBMITTED October 17, 2008

Roger L. Driskell  
DEPUTY DIRECTOR OF HIGHWAYS, REGION ENGINEER

December 5, 2008

Eric E. Hann  
INTERIM ENGINEER OF DESIGN AND ENVIRONMENT

December 5, 2008

Christina M. Reed  
DIRECTOR OF HIGHWAYS, CHIEF ENGINEER

**PRINTED BY THE AUTHORITY  
OF THE STATE OF ILLINOIS**