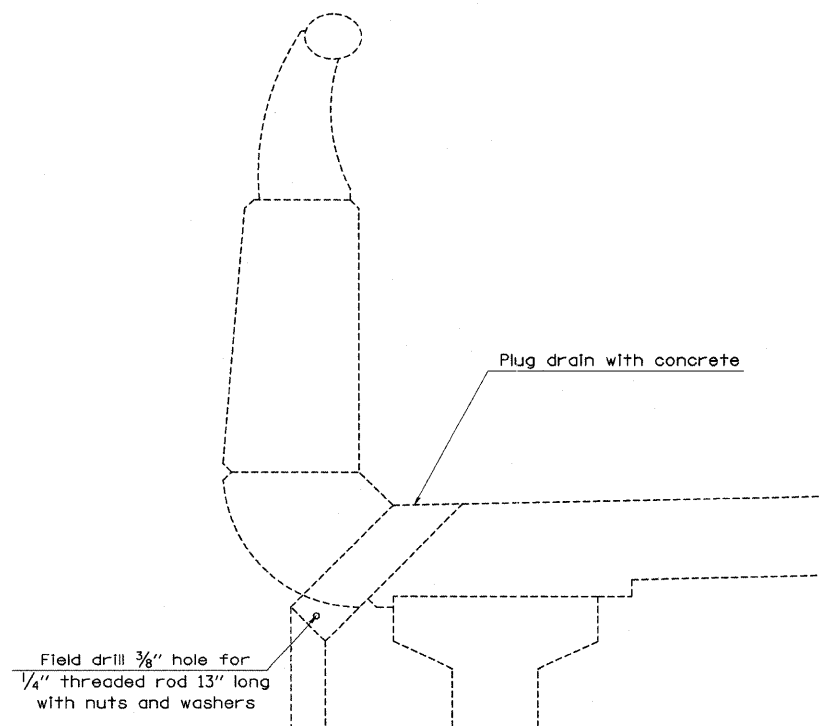
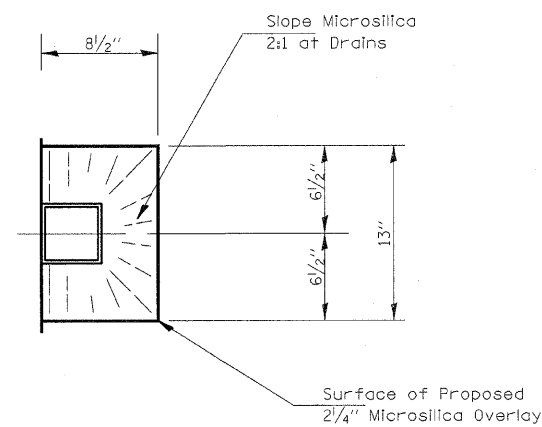


- Existing Drain to Be Plugged
- Existing Drain to Remain Open



DRAINS TO BE PLUGGED DETAIL

Note: See "Total Bill of Materials for each structure for quantities.



PLAN VIEW OF EXISTING DRAIN TO REMAIN OPEN

SHEET NO. 8
12 SHEETS

| | | | | | | | | | | | |
|---|-----------------------------|------------|-----------|---|---|---------------------|---------------------------|---------|--------------|-----------|--|
| FILE NAME = | USER NAME = swartzrw | DESIGNED - | REVISED - | STATE OF ILLINOIS DEPARTMENT OF TRANSPORTATION | EXISTING DECK DRAINS TO BE PLUGGED SN. 026-0007 (EB) | F.A.I. RTE. | SECTION | COUNTY | TOTAL SHEETS | SHEET NO. | |
| ca:\pwwork\pwwid01\SWARTZRW\dms36208\th | elidedesign_94993.dgn | DRAWN - | REVISED - | | | 70 | D-7 BRIDGE DECK REPAIRS | FAYETTE | 59 | 41 | |
| | PLOT SCALE = 20.0000' / IN. | CHECKED - | REVISED - | | | CONTRACT NO. 94993 | | | | | |
| | PLOT DATE = 10/17/2009 | DATE - | REVISED - | | | FED. ROAD DIST. NO. | ILLINOIS FED. AID PROJECT | | | | |
| | | | | | SCALE: N/A | SHEET NO. 8 | OF 12 SHEETS | STA. | TO STA. | | |