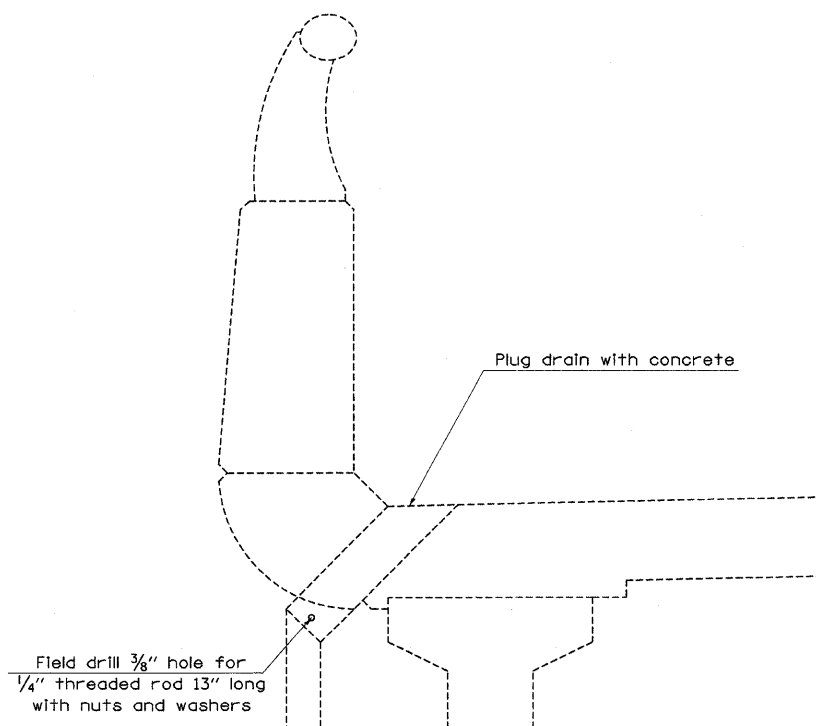
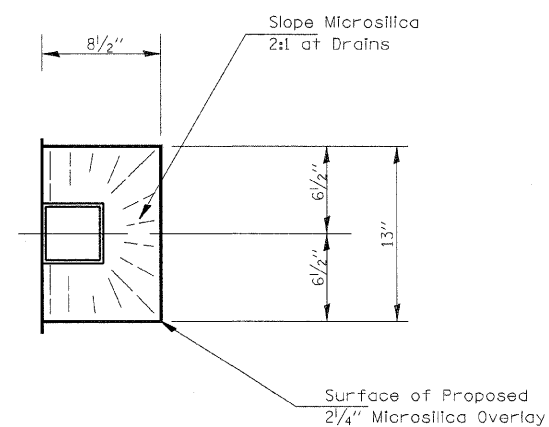


- Existing Drain to be Plugged
- Existing Drain to Remain Open



DRAINS TO BE PLUGGED DETAIL

Note: See "Total Bill of Material for each structure for quantities.



PLAN VIEW OF EXISTING DRAIN TO REMAIN OPEN

FILE NAME =	USER NAME = swartzrw	DESIGNED -	REVISED -	STATE OF ILLINOIS DEPARTMENT OF TRANSPORTATION	EXISTING DECK DRAINS TO BE PLUGGED SN. 026-0008 (WB)			F.A.I. RTE.	SECTION	COUNTY	TOTAL SHEETS	SHEET NO.	
c:\pwork\pwork\SWARTZRW\dms36208\thelodesign_94993.dgn	PLOT SCALE = 20.0000' / IN.	DRAWN -	REVISED -		SCALE: N/A	SHEET NO. 9 OF 12 SHEETS	STA.	TO STA.	70	D-7 BRIDGE DECK REPAIRS	FAYETTE	59	42
PLOT DATE = 10/17/2008	DATE -	CHECKED -	REVISED -					CONTRACT NO. 94993					
		DATE -	REVISED -					FED. ROAD DIST. NO. ILLINOIS FED. AID PROJECT					

SHEET NO. 9
12 SHEETS