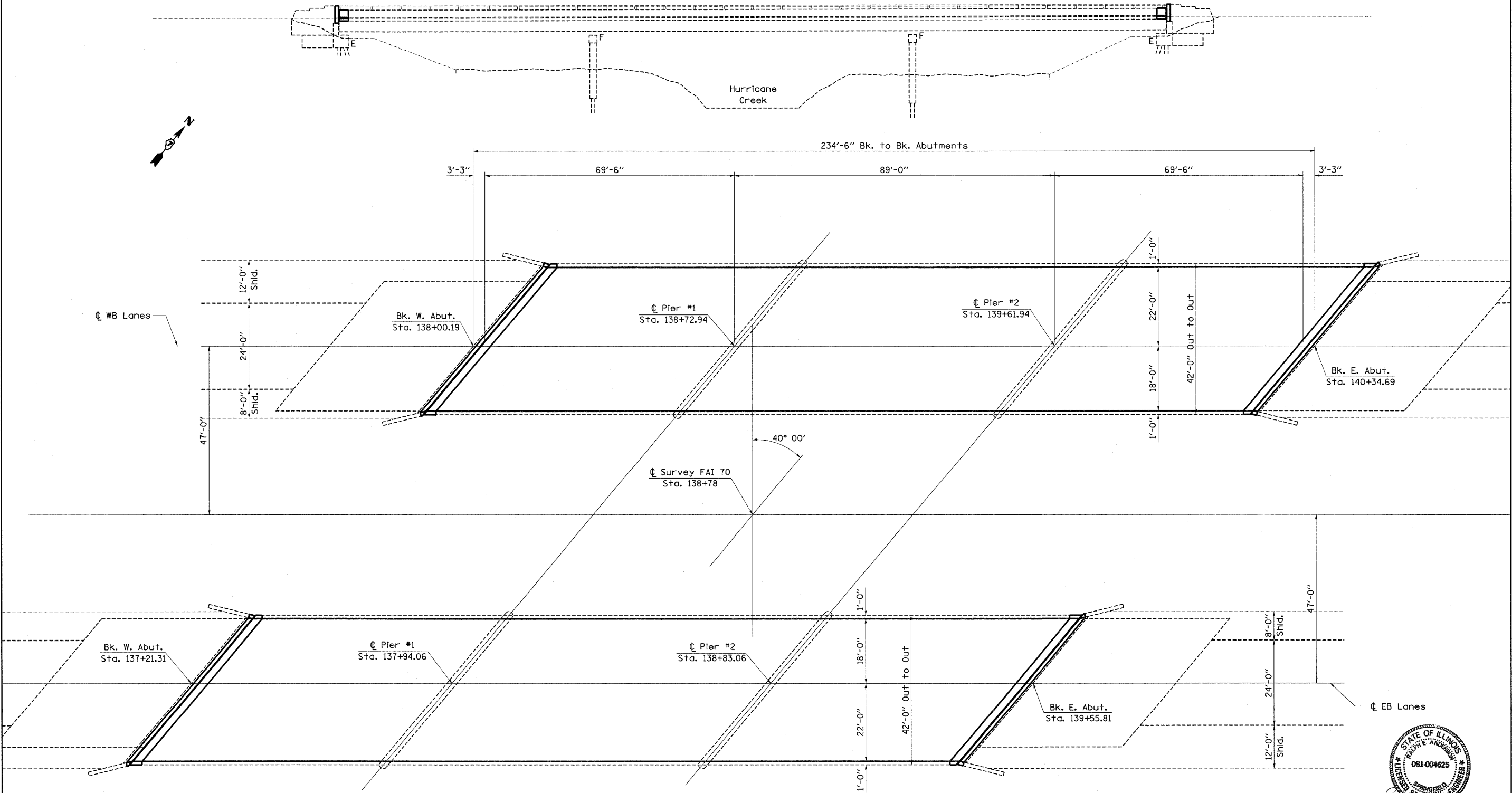


The existing 3 span steel beam structures were constructed in 1965 as section 26-0B-4 at Sta. 138+78. SN 026-0009 carries FAI-70 eastbound and SN 026-0010 carries FAI-70 westbound. The proposed project consists of new expansion joints, partial and full depth deck patching, new microsilica wearing surface, and new deck drains.



Expires Nov. 30, 2010

FILE NAME =	USER NAME = swartzrw	DESIGNED -	REVISED -	<b>STATE OF ILLINOIS DEPARTMENT OF TRANSPORTATION</b>	<b>GENERAL PLAN &amp; ELEVATION SN. 026-0009 (EB) &amp; SN. 026-0010 (WB)</b>	F.A.I. RTE.	SECTION	COUNTY	TOTAL SHEETS	SHEET NO.	
ct:\pw_work\PW\DOT\SWARTZRW\dms36208\th	elidesign_94993.dgn	DRAWN -	REVISED -			70	D-7 BRIDGE DECK REPAIRS	FAYETTE	59	47	
	PLOT SCALE = 20,0000 1/2 IN.	CHECKED -	REVISED -			CONTRACT NO. 94993					
	PLOT DATE = 12/17/2008	DATE -	REVISED -			SCALE: N/A	SHEET NO. 2 OF 14 SHEETS	STA.	TO STA.	FED. ROAD DIST. NO.	ILLINOIS FED. AID PROJECT

SHEET NO. 2  
14 SHEETS