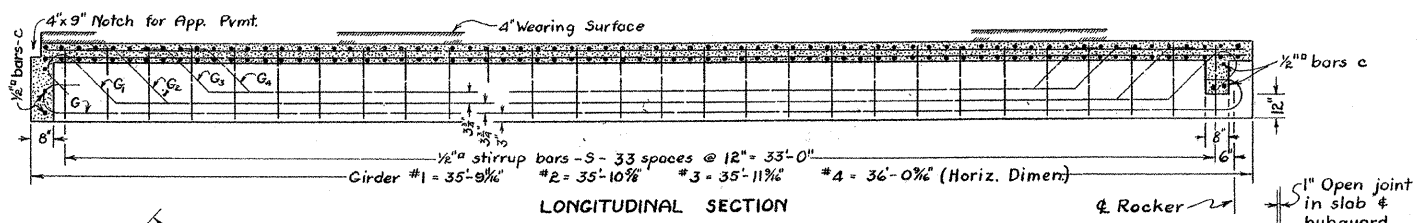
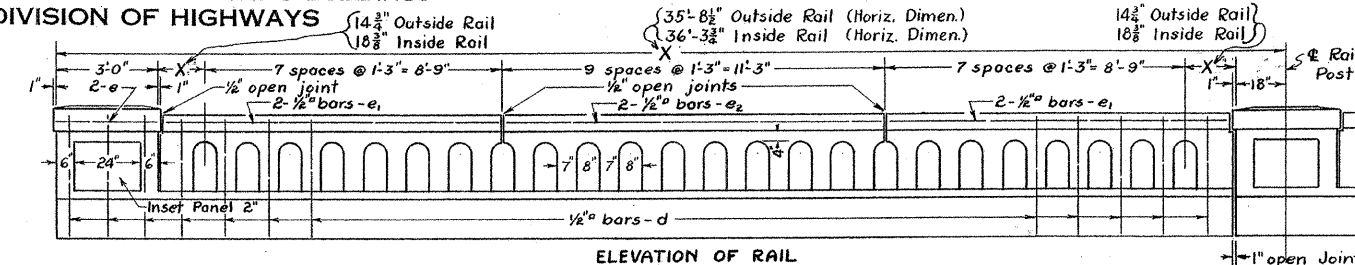
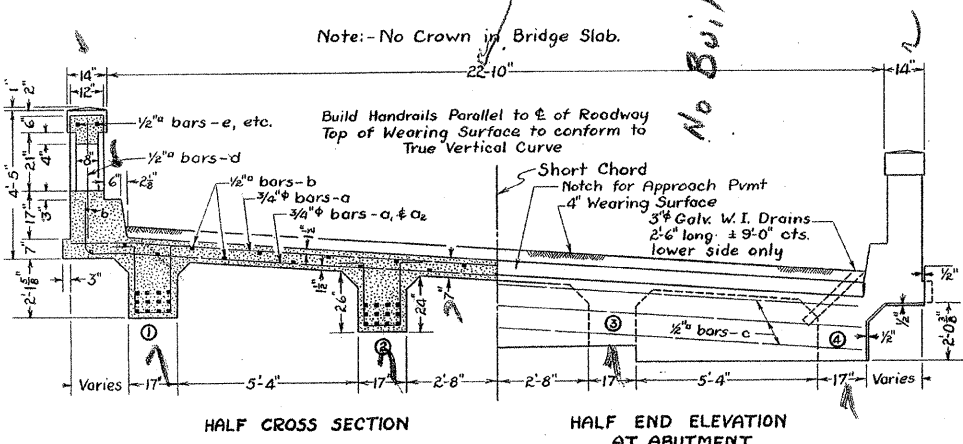


RTE.	SECTION	COUNTY	TOTAL SHEETS	SHEET NO.
FAS 653	*	SHELBY	40	21
PROJECT BRS-0653(112)				
* 04-00256-00-BR				

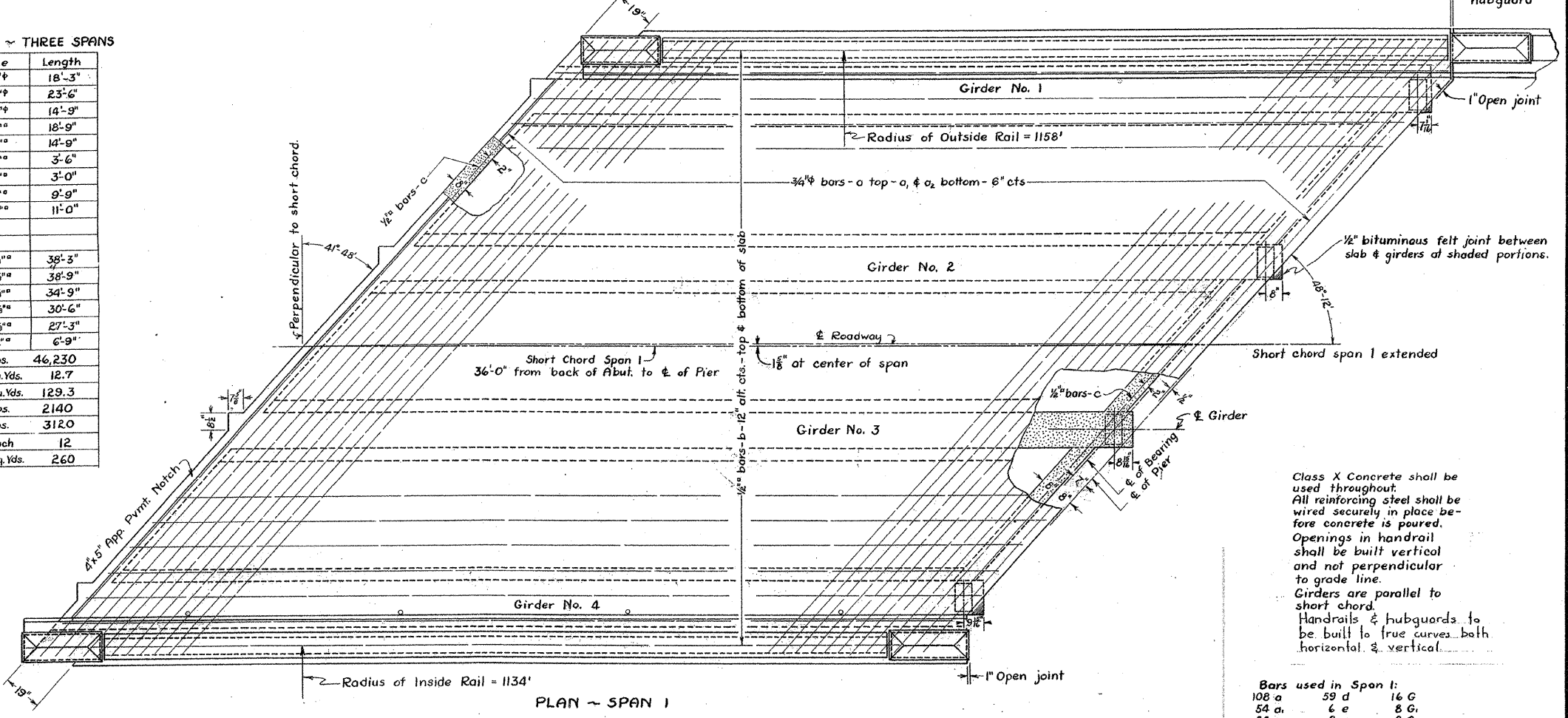
STATE OF ILLINOIS
DEPARTMENT OF PUBLIC WORKS & BUILDINGS
DIVISION OF HIGHWAYS

SHEET NO. 2
7 SHEETS



TOTAL BILL OF MATERIAL - THREE SPANS

Bar	Number	Size	Length
a	330	3/4"	18'-3"
a ₁	165	3/4"	23'-6"
a ₂	165	3/4"	14'-9"
b	162	1/2"	18'-9"
c	36	1/2"	14'-9"
d	176	1/2"	3'-6"
e	16	1/2"	3'-0"
e ₁	20	1/2"	9'-9"
e ₂	16	1/2"	11'-0"
G	48	1 1/2"	38'-3"
G ₁	24	1 1/2"	36'-9"
G ₂	24	1 1/2"	34'-9"
G ₃	24	1 1/2"	30'-6"
G ₄	24	1 1/2"	27'-3"
S	408	1/2"	6'-9"
Reinforcing Steel	Lbs.		46,230
Handrail Concrete	Cu. Yds.		12.7
Class X Concrete	Cu. Yds.		129.3
Structural Steel (Exp. Grd)	Lbs.		2140
Rockers & Plates	Lbs.		3120
Floor Drains	Each		12
4" P.C.C. Wearing Surface	Sq. Yds.		260

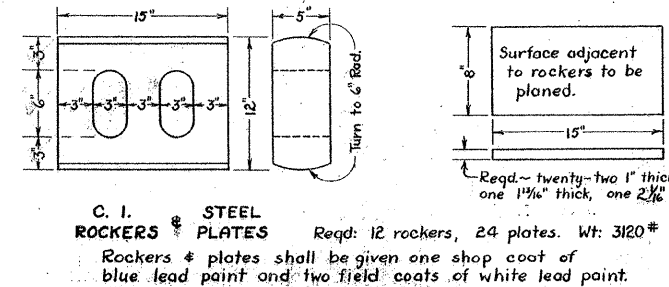


Class X Concrete shall be used throughout. All reinforcing steel shall be wired securely in place before concrete is poured. Openings in handrail shall be built vertical and not perpendicular to grade line. Girders are parallel to short chord. Handrails & hubguards to be built to true curves both horizontal & vertical.

Bars used in Span 1:

108 a	59 d	16 G
54 a ₁	8 e	8 G ₁
54 a ₂	8 e ₁	8 G ₂
54 b	4 e ₂	8 G ₃
12 c	136 S	8 G ₄

STANDARD	COMPUTED	M.H.	EXAMINED	8-11-1934	
	CHECKED	J.C. Anderson		PASSED	A.E. Stevenson
	DRAWN	M.H.			
SPECIAL	CHECKED	J.C.A.	APPROVED	Ernest A. Stevenson	
	ASSEMBLED			CHIEF HIGHWAY ENGINEER	



THIS SHEET FOR INFORMATION ONLY

RICHLAND CREEK BRIDGE
S.A. RTE. 6 - SEC. 5-1-B-1-M.F.T.
SHELBY COUNTY
STA. 554+22