

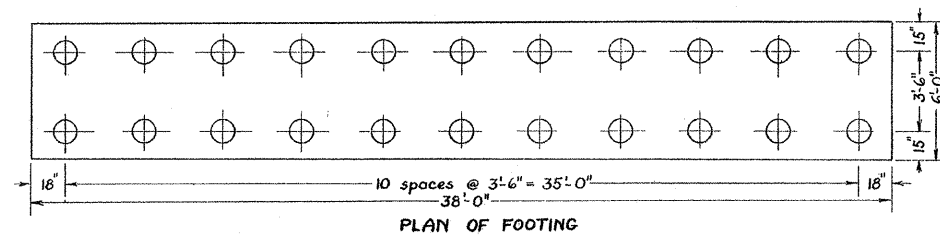
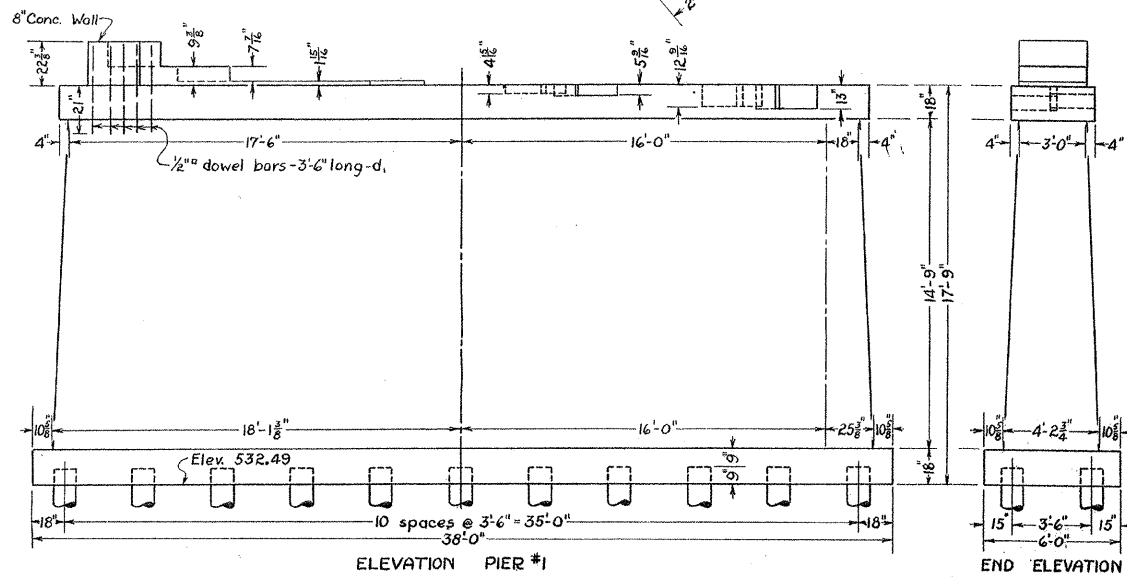
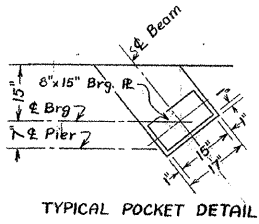
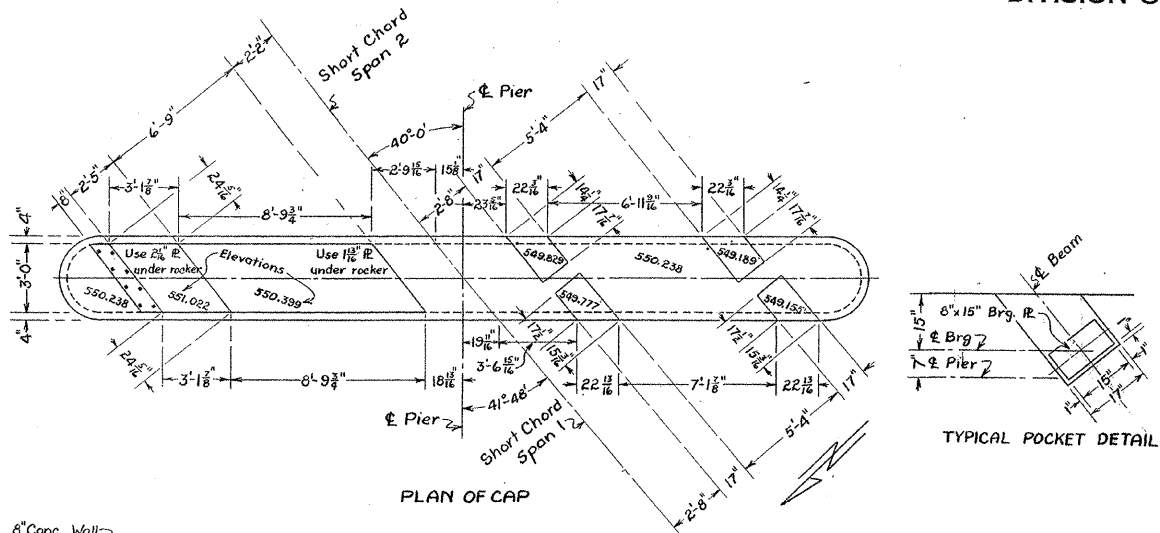
B.M.#44 ~ Spike in Burr Oak 60 ft. Lt. of Sta. 553+75. Elev. 548.52

STATE OF ILLINOIS
DEPARTMENT OF PUBLIC WORKS & BUILDINGS
DIVISION OF HIGHWAYS

SHEET NO. 5
7 SHEETS

CONTRACT NO. 95555

| RTE. | SECTION | COUNTY | TOTAL SHEETS | SHEET NO. |
|-------------------------|---------|--------|--------------|-----------|
| FAS 653 | * | SHELBY | 40 | 24 |
| PROJECT BRS - 0653(112) | | | | |
| * 04-00256-00-BR | | | | |

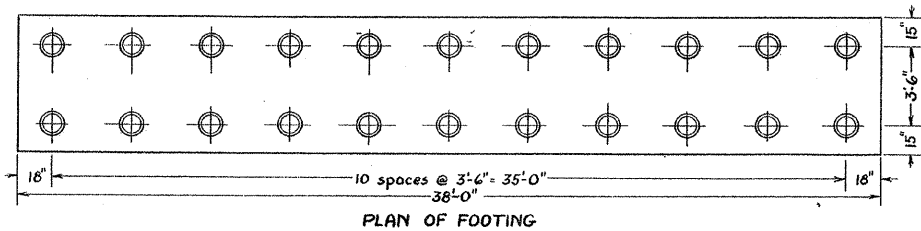
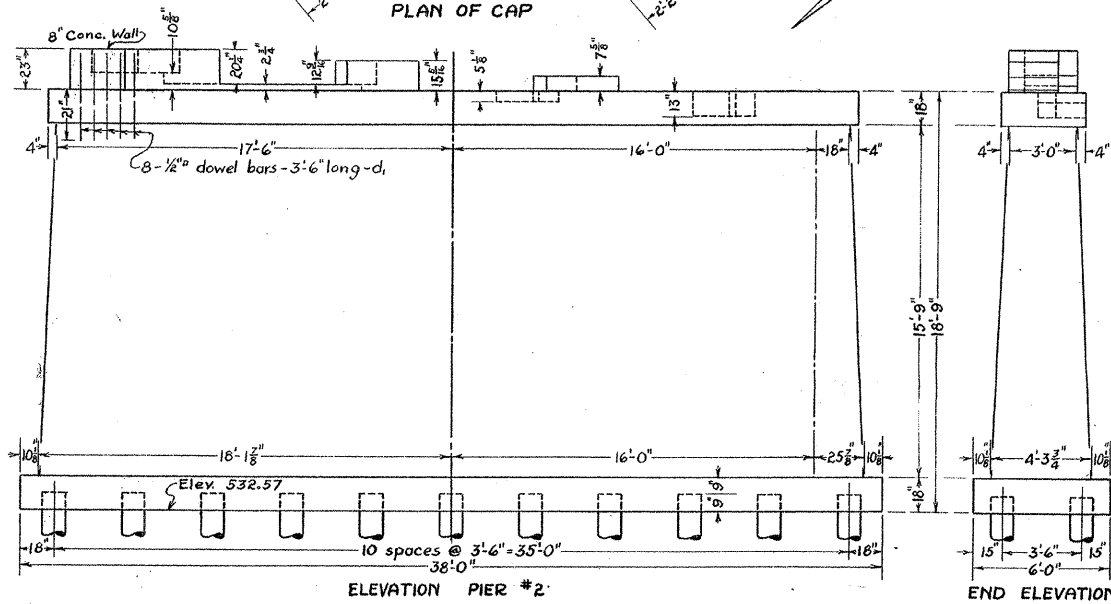
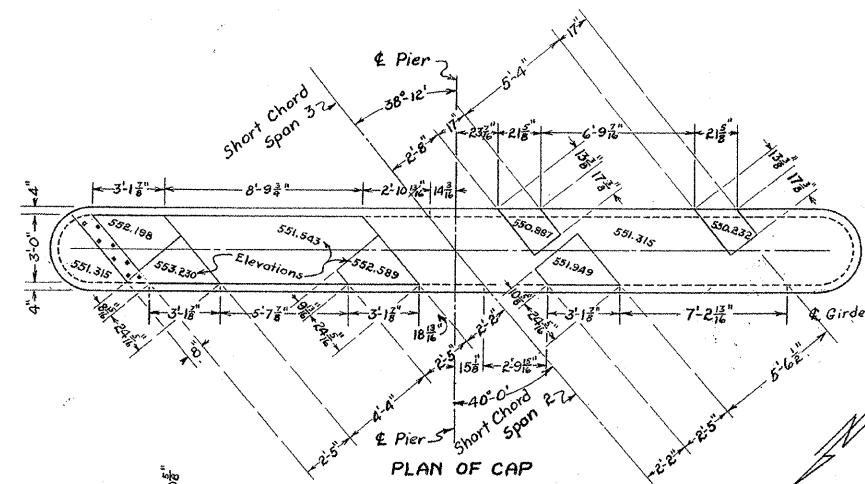
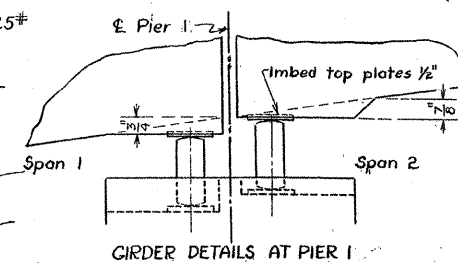


○ 15 Ton Untreated Piles. (up to 20') 22 Reqd.
88.9 Cu. Yds. Class A Concrete
Reinf. Steel - 8-1/2" bars-3'-6" long - 25#

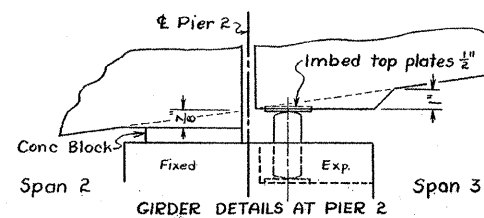
Class A Concrete to be used throughout.

| | | |
|----------|-----------|---------------|
| STANDARD | COMPUTED | M.A. |
| | CHECKED | J.C. Anderson |
| | DRAWN | M.H. |
| SPECIAL | CHECKED | J.C.A. |
| | ASSEMBLED | |
| | CHECKED | |

EXAMINED 8-11-1939
PASSED H.E. J...
APPROVED



○ 17 Ton Untreated Piles. (up to 20') 22 Reqd.
95.3 Cu. Yds. Class A Concrete
Reinf. Steel - 8-1/2" bars-3'-6" long - 25#



RICHLAND CREEK BRIDGE
S.A. RTE. 6 ~ SEC. S-1-B-1-M.F.T.
SHELBY COUNTY
STA. 554+22

THIS SHEET
FOR INFORMATION ONLY