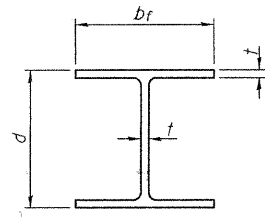


STATE OF ILLINOIS
DEPARTMENT OF TRANSPORTATION

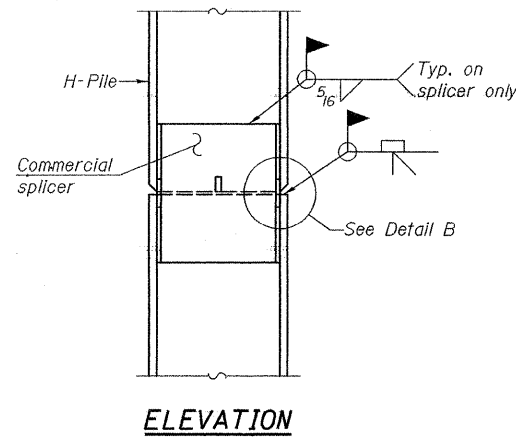
ROUTE NO.	SECTION	COUNTY	TOTAL SHEETS	SHEET NO.	SHEET NO. 11 14 SHEETS
FAS 653	04-00256-00-BR	SHELBY	40	37	
FED. ROAD DIST. NO. 7	ILLINOIS	FED. AID PROJECT			

Contract No. 95555

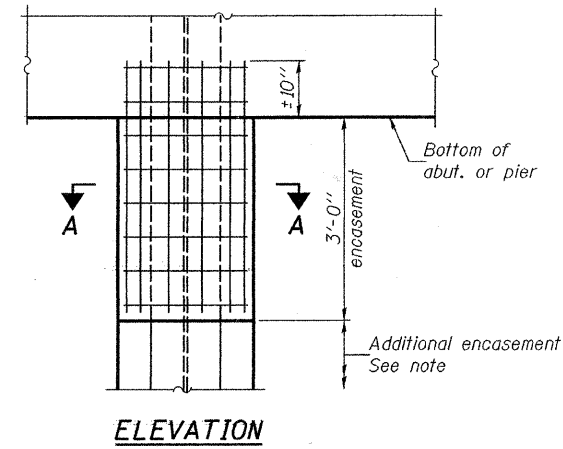


STEEL PILE TABLE

Designation	Depth d	Flange width bf	Web and Flange thickness t	Encasement diameter A
HP 14x117	14 1/4"	14 7/8"	1 3/16"	30"
x102	14"	14 3/4"	1 1/16"	30"
x89	13 7/8"	14 3/4"	5/8"	30"
x73	13 5/8"	14 5/8"	1/2"	30"
HP 12x84	12 1/4"	12 1/4"	1 1/16"	24"
x74	12 1/8"	12 1/4"	5/8"	24"
x63	12"	12 1/8"	1/2"	24"
x53	11 3/4"	12"	7/16"	24"
HP 10x57	10"	10 1/4"	9/16"	24"
x42	9 3/4"	10 1/8"	7/16"	24"
HP 8x36	8"	8 1/8"	7/16"	18"

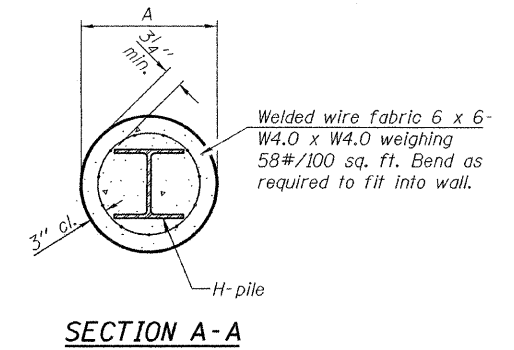


ELEVATION



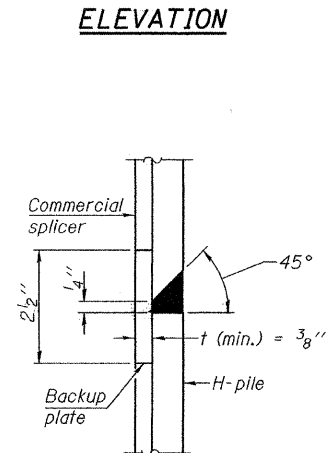
ELEVATION

PILE ENCASEMENT

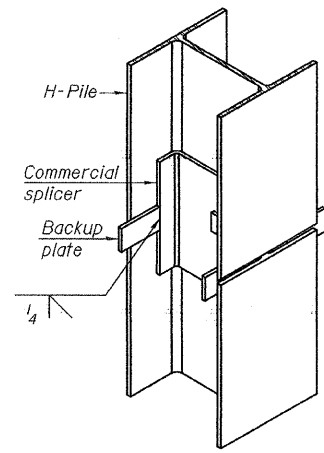


SECTION A-A

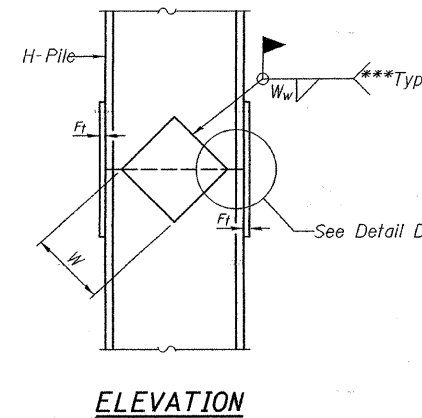
Notes: Forms for encasement may be omitted when soil conditions permit.
Cost of additional encasement included with Setting Piles in Rock. See sheets 9 & 10 of 14 for additional information.



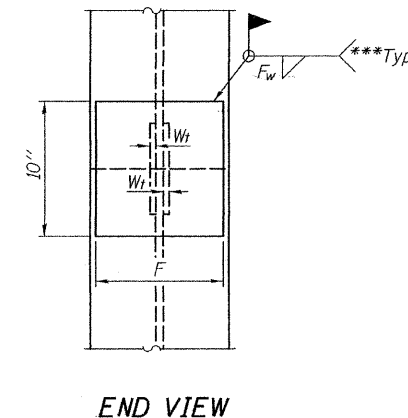
DETAIL "B"



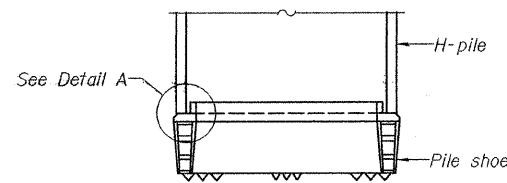
ISOMETRIC VIEW



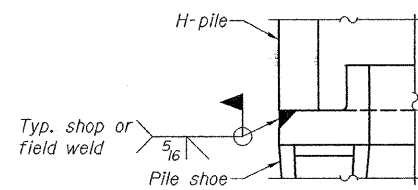
ELEVATION



END VIEW

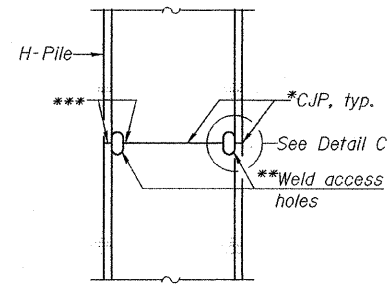


ELEVATION

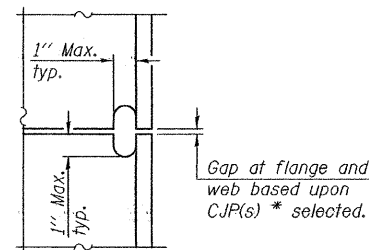


DETAIL A

H-PILE SHOE ATTACHMENT

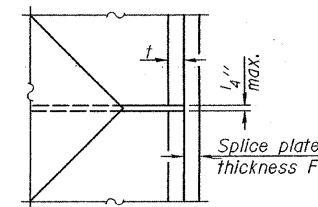


ELEVATION



DETAIL C

COMPLETE PENETRATION WELD SPLICE



DETAIL D

WELDED PLATE FIELD SPLICE

Note: The steel H-piles shall be according to AASHTO M270 Grade 50.

Designation	F	Ft	Fw	W	Wt	Ww
HP 14x117	12 1/2"	1"	7/8"	7 3/4"	5 8/16"	1/2"
x102	12 1/2"	7/8"	3/4"	7 3/4"	5 8/16"	1/2"
x89	12 1/2"	3/4"	1 1/16"	7 3/4"	5 8/16"	1/2"
x73	12 1/2"	5/8"	9/16"	7 3/4"	5 8/16"	1/2"
HP 12x84	10"	7/8"	1 1/16"	6 1/2"	5 8/16"	1/2"
x74	10"	7/8"	1 1/16"	6 1/2"	5 8/16"	1/2"
x63	10"	5/8"	1/2"	6 1/2"	1/2"	3/8"
x53	10"	5/8"	1/2"	6 1/2"	1/2"	3/8"
HP 10x57	8"	3/4"	9/16"	5 1/4"	1/2"	3/8"
x42	8"	5/8"	9/16"	5 1/4"	1/2"	3/8"
HP 8x36	7"	5/8"	7/16"	4 1/4"	1/2"	3/8"

STEEL H PILE DETAILS
F.A.S. RTE. 653 - SEC. 04-00256-00-BR
SHELBY COUNTY
STATION 21+06.00
STRUCTURE NO. 087-3563

DESIGNED	Jay D. Edwards
CHECKED	Nick R. Barnett
DRAWN	h.t. duong
CHECKED	JDE/NRB/GRA

Sep. 4, 2008
EXAMINED *Thomas J. Demagala*
PASSED *Ralph T. Carlson*
ENGINEER OF BRIDGES AND STRUCTURES

*Use joint conforming to Figure 3.4 in AWS D1.1, Structure Welding Code - Steel.
**Preparation per Fig. 5.2 in AWS D1.1, Structure Welding Code - Steel.
***Interrupt welds 1/4" from end of each pile.