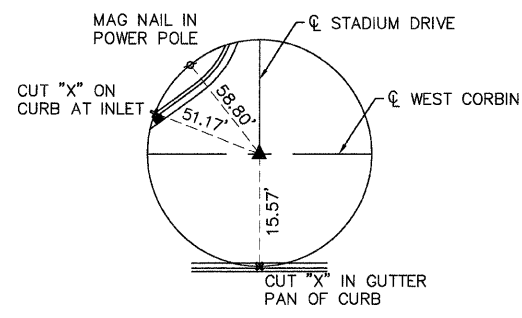
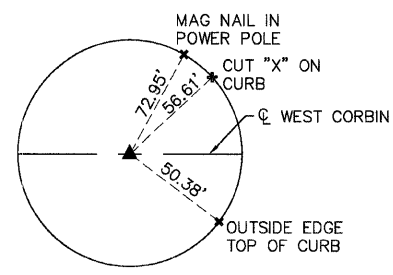


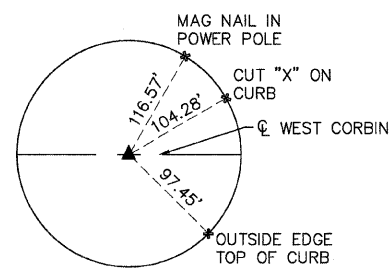
MAP NO.	SECTION	COUNTY	TOTAL SHEETS	SHEET NO.
05-00016-03-BR	MADISON	129	9	
STA. TO STA.		CONTRACT NO.: 97351		
ADDENDUM #1 01-02-2009				



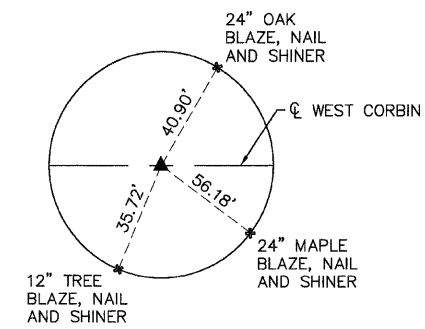
**TIE POINT**  
MASONRY NAIL WITH RIBBON  
STA. 23+72.63  
N: 813557.7812  
E: 526302.3898  
ELEV: 485.59



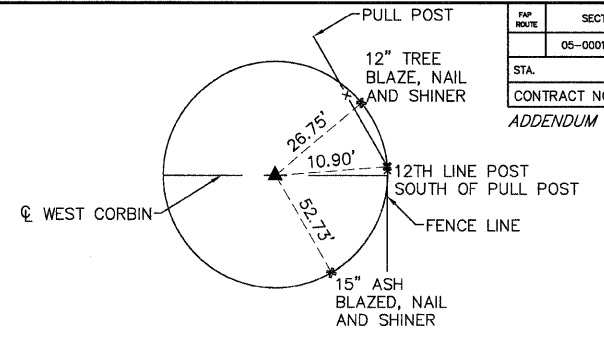
**TIE POINT**  
(1/2" IRON PIN)  
P.C. STA. 24+75.97  
N: 813564.89  
E: 526199.29  
ELEV: 485.59



**TIE POINT**  
(1/2" IRON PIN)  
P.T. STA. 25+24.43  
N: 813567.05  
E: 526150.89  
ELEV: 494.77

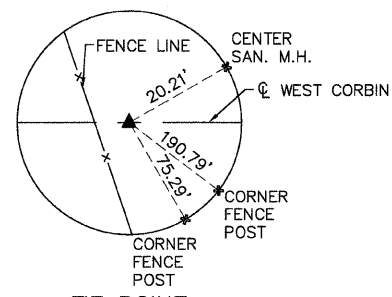


**TIE POINT**  
(1/2" IRON PIN)  
P.C. STA. 32+22.86  
N: 813581.29  
E: 525452.60  
ELEV: 478.09

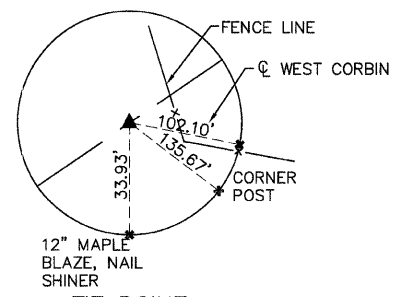


**TIE POINT**  
(1/2" IRON PIN)  
P.T. STA. 34+25.01  
N: 813540.64  
E: 525256.31  
ELEV: 471.61

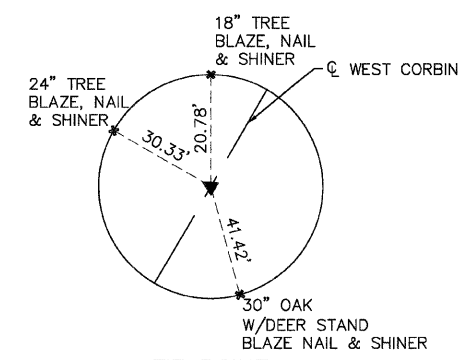
DATE	BY
7/27/09	J.P.F.
DATE	BY
7/27/09	J.P.F.
DATE	BY
7/27/09	J.P.F.



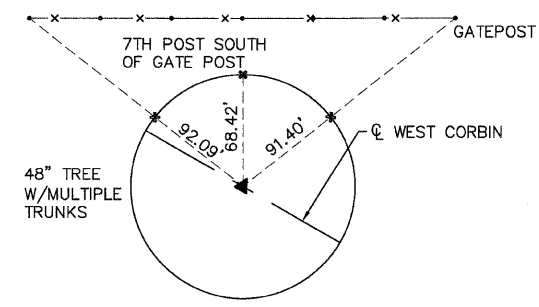
**TIE POINT**  
(description)  
P.C. STA. 38+19.65  
N: 813376.55  
E: 524897.40  
ELEV: 463.77



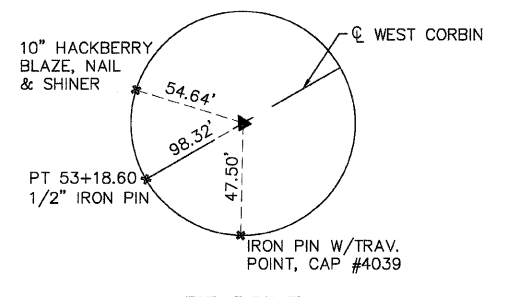
**TIE POINT**  
(1/2" IRON PIN)  
P.T. STA. 39+41.98  
N: 813311.27  
E: 524794.38  
ELEV: 455.84



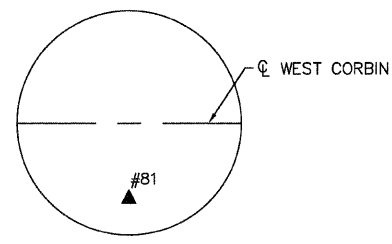
**TIE POINT**  
(1/2" IRON PIN)  
P.C. STA. 41+47.63  
N: 813178.69  
E: 524637.19  
ELEV: 454.57



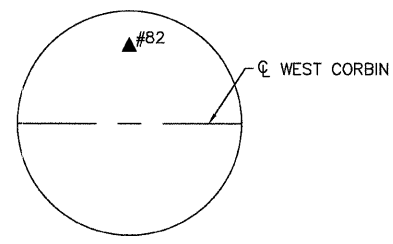
**TIE POINT**  
(NAIL & WASHER)  
P.T. STA. 47+26.23  
N: 812968.15  
E: 524108.91  
ELEV: 499.32



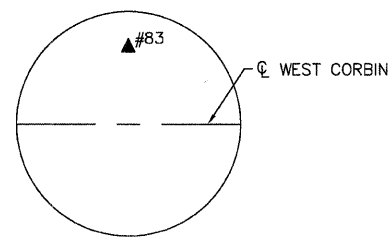
**TIE POINT**  
(1/2" IRON PIN)  
P.C. STA. 52+20.09  
N: 812939.63  
E: 523615.87  
ELEV: 454.19



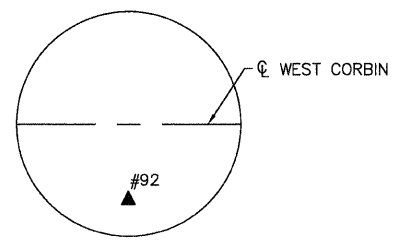
**CONTROL POINT**  
81  
(PIN W/CAP)  
STA. 46+13.38,  
56.75 LT  
N: 812925.91  
E: 524231.20  
ELEV: 500.46



**CONTROL POINT**  
82  
(PIN W/CAP)  
STA. 49+05.25,  
117.15 RT  
N: 813074.77  
E: 523923.42  
ELEV: 492.68

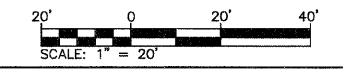


**CONTROL POINT**  
83  
(PIN W/CAP)  
STA. 38+67.41,  
359.77 RT  
N: 813663.93  
E: 524671.70  
ELEV: 492.54



**CONTROL POINT 92**  
(COTTON PICKER SPINDLE)  
STA. 36+50.81,  
136.97 LT  
N: 813332.18  
E: 525107.91  
ELEV: 475.09

**BENCHMARK**  
"L" CUT ON TOP OF CONCRETE HEADWALL  
STA. 34+98.01 106.11 LT  
ELEV: 471.36



REVISIONS	
NAME	DATE

ILLINOIS DEPARTMENT OF TRANSPORTATION  
**ALIGNMENT, TIES, AND BENCHMARKS**  
FAU ROUTE 8959  
SECTION 05-00016-03-BR  
COUNTY MADISON  
DRAWN BY: R.A.W.

REVISED 1-6-09