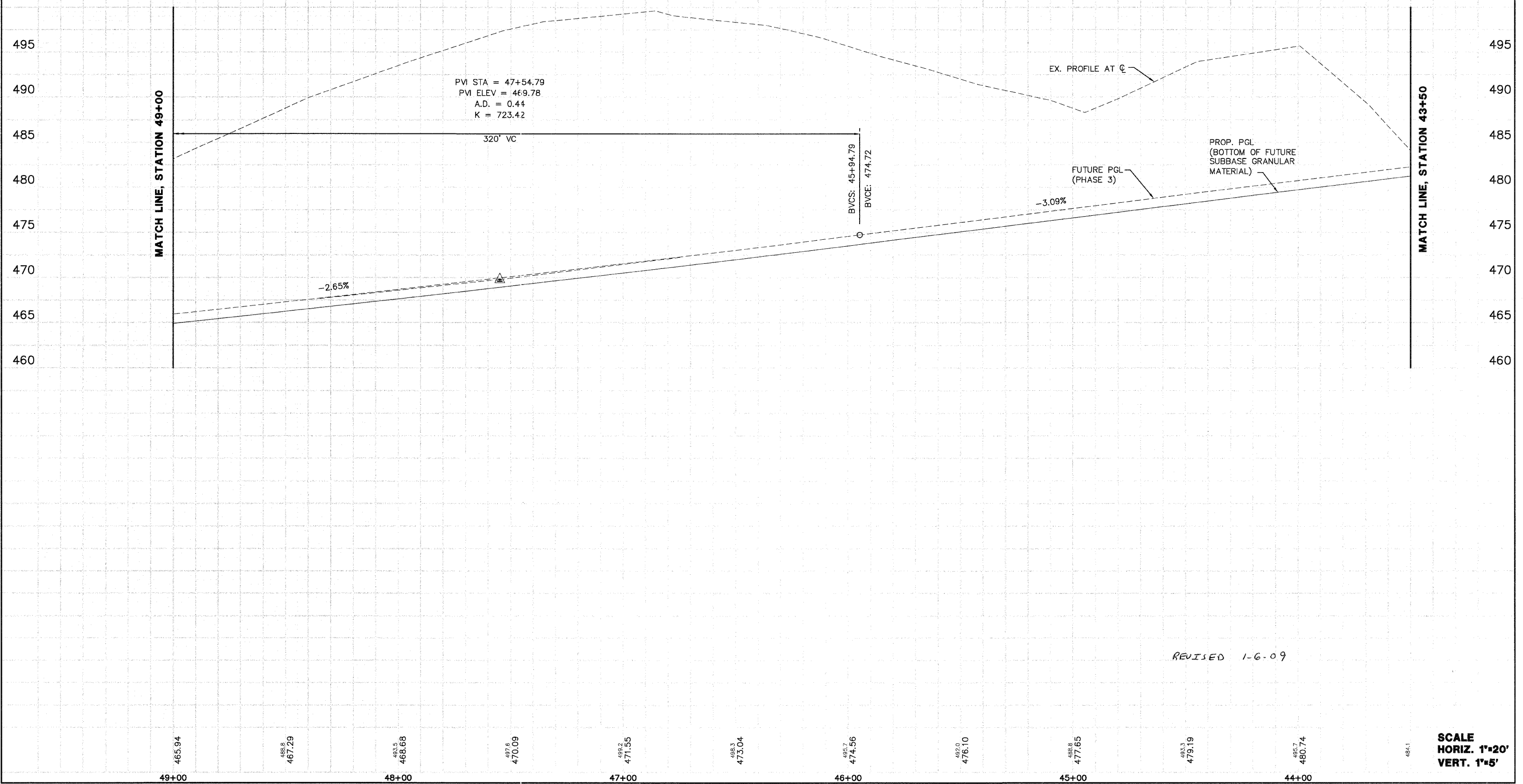


FAP ROUTE	SECTION	COUNTY	TOTAL SHEETS	SHEET NO.
	05-00016-03-BR	MADISON	129	18
STA. 43+50		TO STA. 49+00		
CONTRACT NO.: 97351				
ADDENDUM #1 01-02-2009				

BENCHMARK DATUM
 BM 81
 PIN W/CAP
 STA. 46+13.38, 56.75 LEFT
 ELEV. 500.46



PROFILE	DATE
BY	DATE
DATE	DATE
DATE	DATE
DATE	DATE

REVISED 1-6-09

SCALE
 HORIZ. 1"=20'
 VERT. 1"=5'