

F&P NO.	SECTION	COUNTY	TOTAL SHEETS	SHEET NO.
	05-00016-03-BR	MADISON	129	20

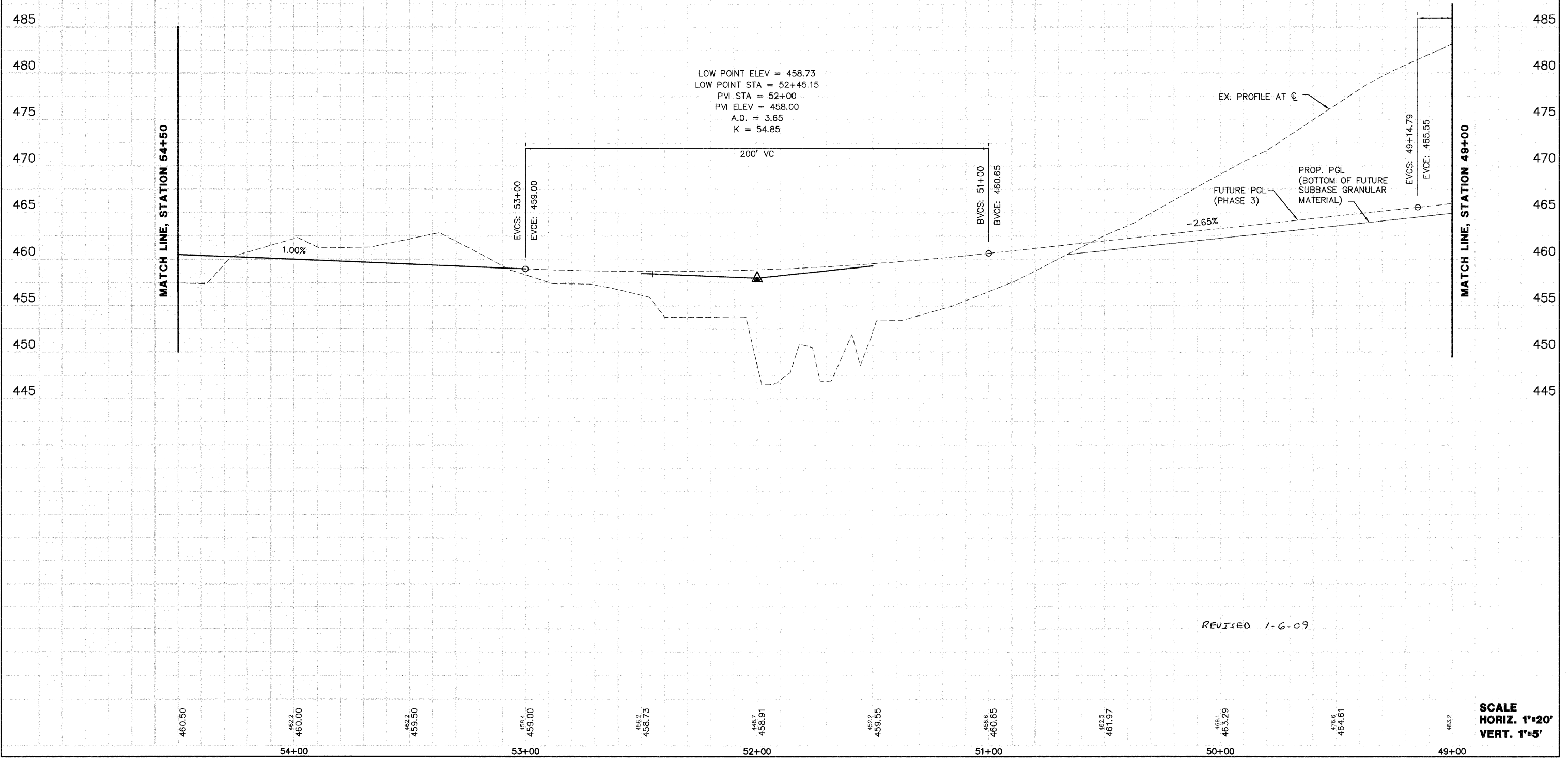
STA. 49+00 TO STA. 54+50

CONTRACT NO.: 97351
ADDENDUM #1 01-02-2009

BENCHMARK DATUM
BM 1039
TRAVERSE PIN
STA. 52+60.62, 22.35 LEFT
ELEV. 459.88

BENCHMARK DATUM
BM 82
PIN W/CAP
STA. 49+05.25, 117.15 RIGHT
ELEV. 492.68

LOW POINT ELEV = 458.73
LOW POINT STA = 52+45.15
PVI STA = 52+00
PVI ELEV = 458.00
A.D. = 3.65
K = 54.85



PROFILE	DATE
SURVEYED	BY
GRADES CHECKED	J.T.C.
STRUCTURE NOTATIONS CHECKED	E.R.S.
NO.	

REVISED 1-6-09

SCALE
HORIZ. 1"=20'
VERT. 1"=5'