

FAU ROUTE	SECTION	COUNTY	TOTAL SHEETS	SHEET NO.
	05-00016-03-BR	MADISON	129	27

STA. TO STA.

CONTRACT NO.: 97351

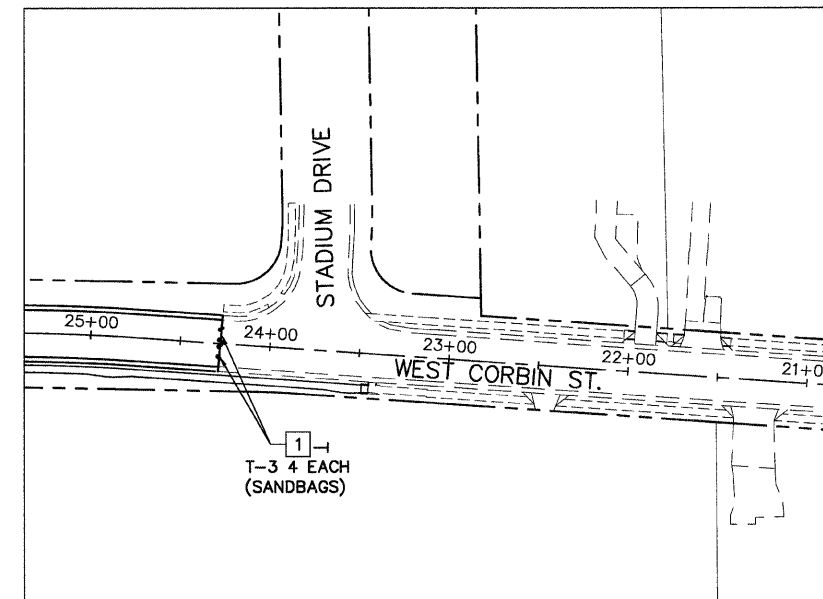
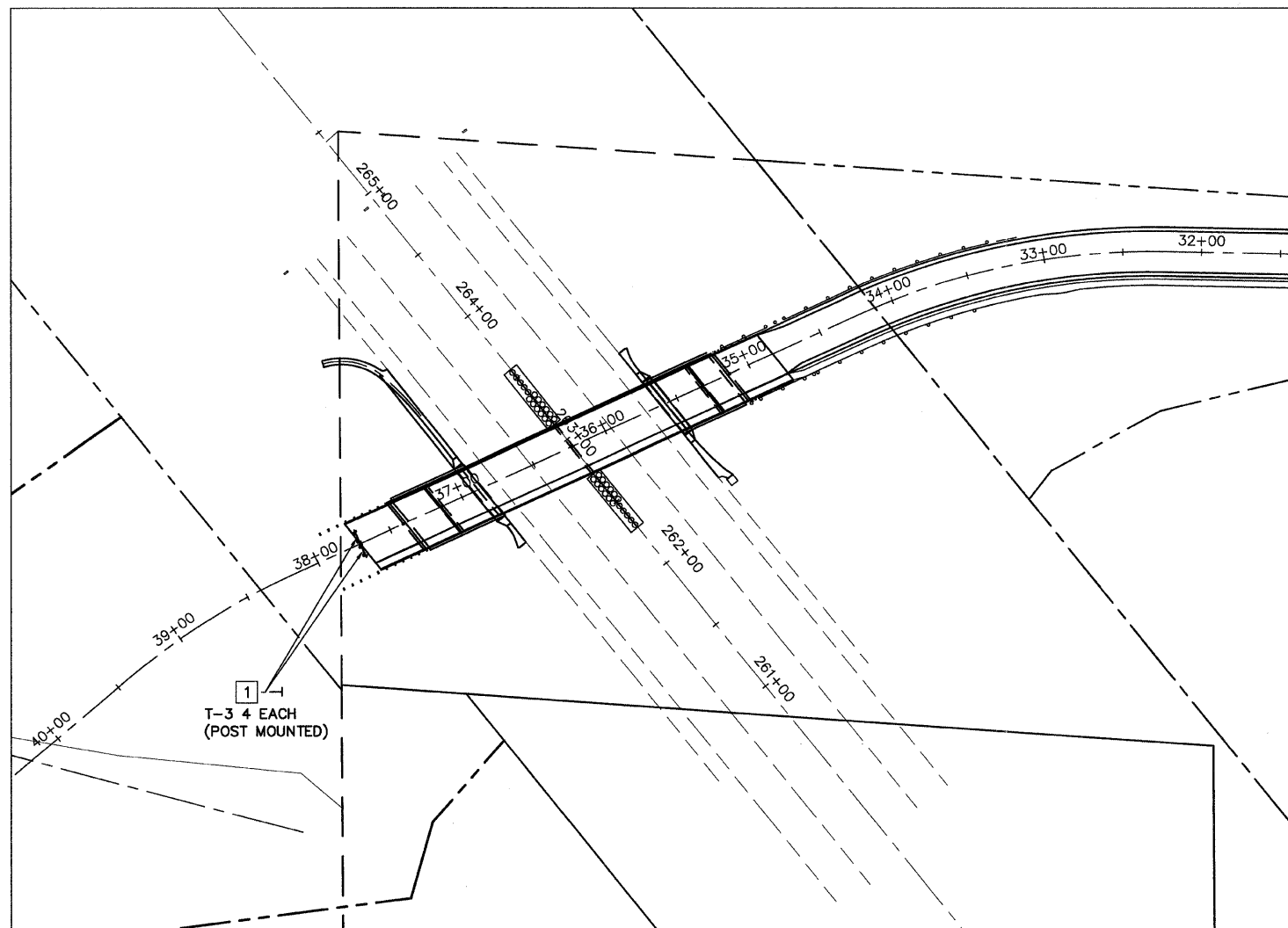
ADDENDUM #1 01-02-2009

**NOTES**

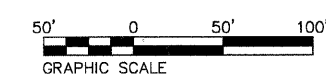
- ROAD CLOSURE IS IN ACCORDANCE WITH STD. 701901.
- DISTANCES MAY BE ADJUSTED TO FIT FIELD CONDITIONS.
- EXACT LOCATIONS OF ALL WARNING SIGNS AND BARRICADES SHALL BE APPROVED BY THE ENGINEER PRIOR TO INSTALLATION.

**LEGEND**

- 1 ROAD CLOSED R11-2
- 18"x 18" (MINIMUM) ORANGE FLAG
- FLASHING LIGHT
- TYPE III BARRICADE WITH FLASHING LIGHT
- SIGN LOCATION AND DIRECTION



REVISED 1-6-09



REVISIONS	
NAME	DATE

ILLINOIS DEPARTMENT OF TRANSPORTATION

**TRAFFIC CONTROL**

FAU ROUTE 8959  
SECTION 05-00016-03-BR  
COUNTY MADISON

DRAWN BY: R.A.W.