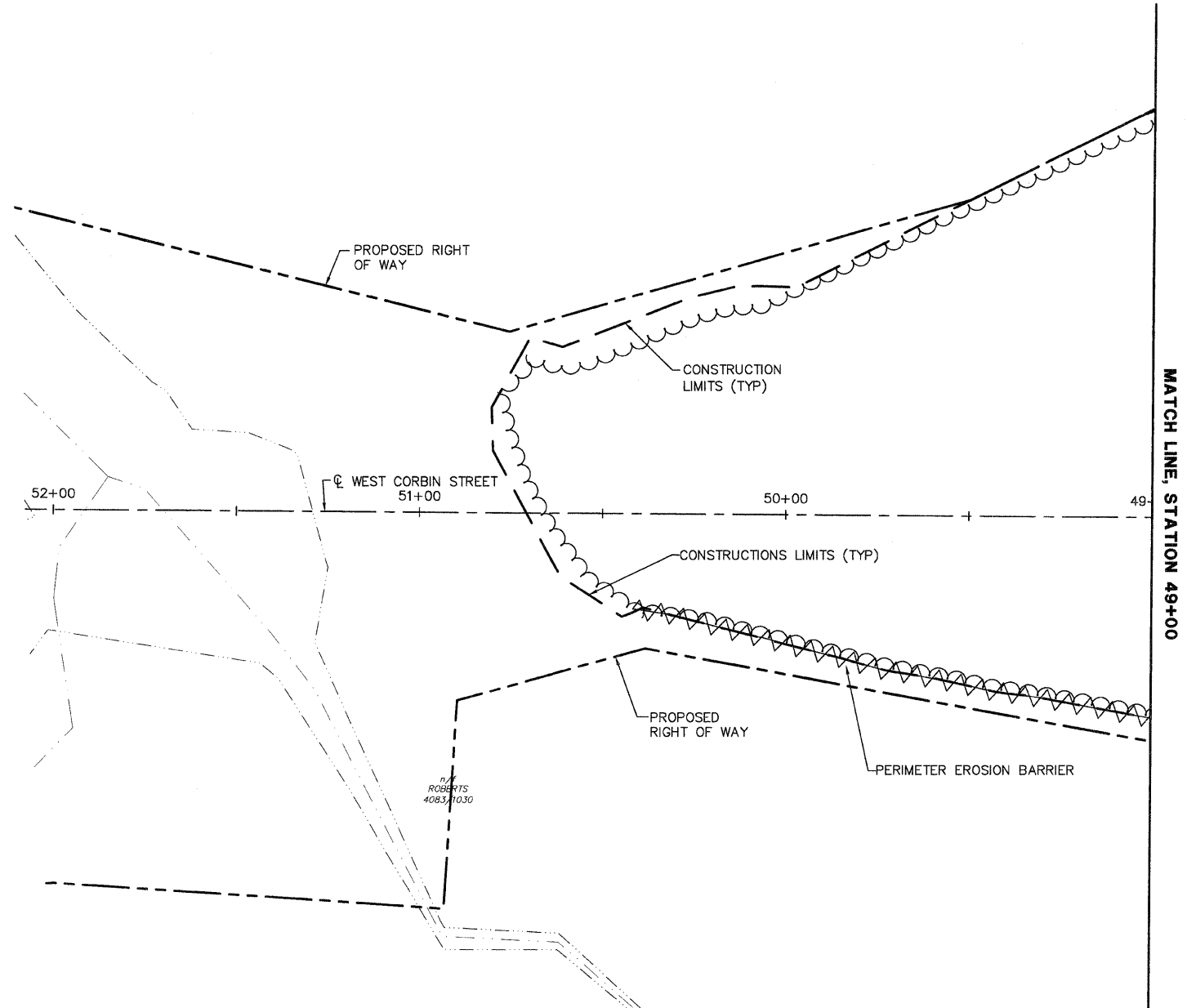


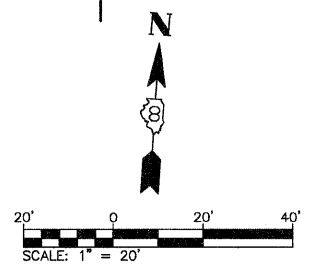
FAU ROUTE	SECTION	COUNTY	TOTAL SHEETS	SHEET NO.
	05-00016-03-BR	MADISON	129	33
STA. 49+00	TO STA. 54+50			
CONTRACT NO.: 97351				
ADDENDUM #1 01-02-2009				

PLAN	DATE
BY	2/7/09
DATE	
BY	
DATE	
BY	
DATE	
BY	
DATE	



- LEGEND:**
- >--->---> EXISTING STORM SEWER
 - <---<---< EXISTING SANITARY SEWER
 - ⊙ EXISTING SANITARY MANHOLE
 - CONSTRUCTION LIMITS
 - >--->---> PROPOSED STORM SEWER
 - <---<---< PROPOSED SANITARY SEWER
 - . . . --- PROPOSED DITCH
 - PROPOSED CURB INLET
 - ⊙ PROPOSED STORM MANHOLE
 - PROPOSED SANITARY MANHOLE
 - ◇ PROPOSED DITCH CHECK (TEMPORARY)
 - ~ PROPOSED DITCH FLOW
 - ▲▲▲▲ PERIMETER EROSION BARRIER
 - ◇ PROPOSED INLET AND PIPE PROTECTION

REVISED 1-6-09



REVISIONS	
NAME	DATE

ILLINOIS DEPARTMENT OF TRANSPORTATION
EROSION AND SEDIMENT CONTROL PLANS—WEST CORBIN STREET
 FAU ROUTE 8959
 SECTION 05-00016-03-BR
 COUNTY MADISON
 DRAWN BY: R.A.W.