

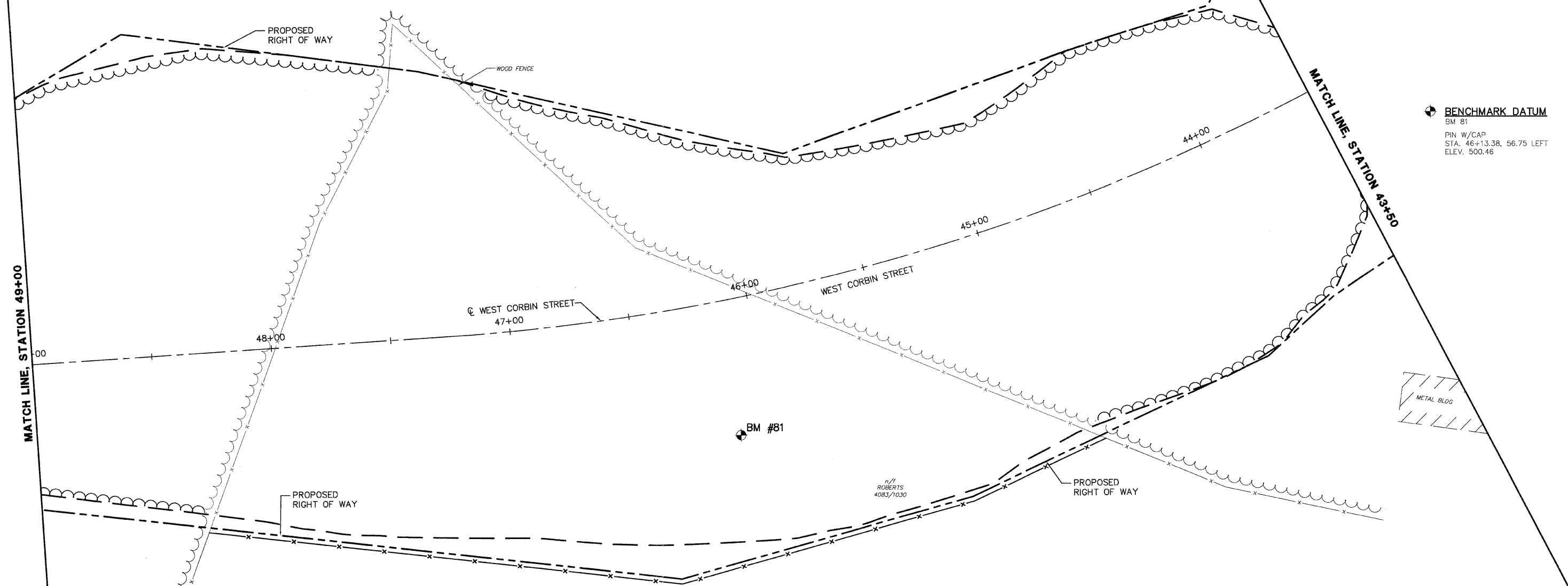
PLAN NO.	SECTION	COUNTY	TOTAL SHEETS	SHEET NO.
	05-00016-03-BR	MADISON	129	38

STA. 43+50 TO STA. 49+00

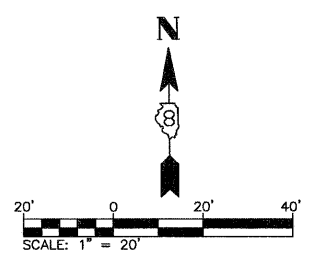
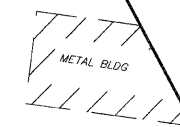
CONTRACT NO.: 97351

ADDENDUM #1 01-02-2009

DATE	2/27/08
BY	J.L.P.
CHECKED	
APPROVED	
PLAN NO.	
NOTE BOOK NO.	
FILE NAME	



BENCHMARK DATUM
 BM #81
 PIN W/CAP
 STA. 46+13.38, 56.75 LEFT
 ELEV. 500.46



REVISED 1-6-09

NOTES:

1. ALL UTILITY RELOCATION TO BE PERFORMED BY OTHERS.
2. CULVERT PIPES, STORM SEWERS AND SANITARY SEWERS ARE 90° TO CENTER OF ROAD UNLESS OTHERWISE NOTED.
3. STATION IS TO THE CENTER OF STRUCTURE UNLESS OTHERWISE NOTED.
4. TOPS OF INLETS TYPE 3 AND TYPE 3V FRAME AND GRATE ARE TO THE EDGE OF PAVEMENT.
5. FLARED END SECTIONS ARE INCLUDED IN LENGTHS OF PIPE.
6. ALL LENGTHS ARE MEASURED FROM THE CENTER OF STRUCTURE UNLESS OTHERWISE NOTED.

REVISIONS	
NAME	DATE

ILLINOIS DEPARTMENT OF TRANSPORTATION
DRAINAGE AND UTILITIES
PLAN—WEST CORBIN STREET
STA 43+50 TO STA 49+00
 FAU ROUTE 8959
 SECTION 05-00016-03-BR
 COUNTY MADISON
 DRAWN BY: R.A.W.