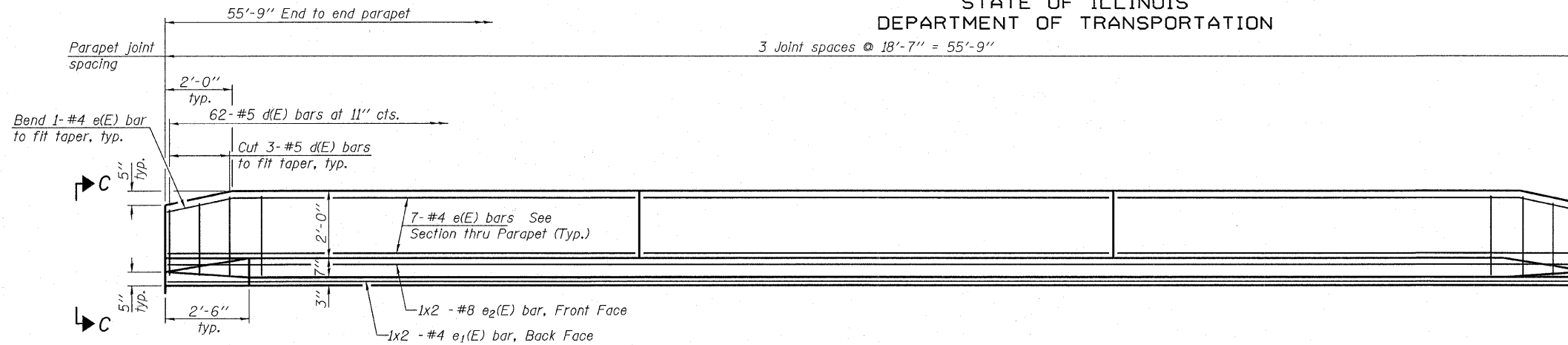


STATE OF ILLINOIS
DEPARTMENT OF TRANSPORTATION

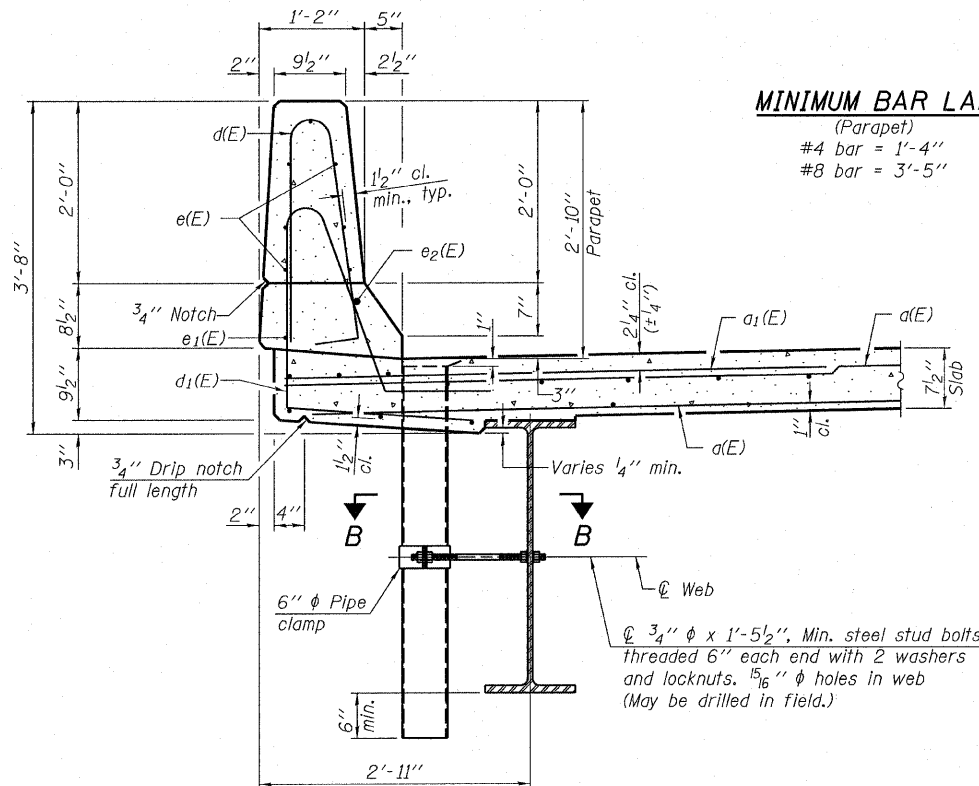
3 Joint spaces @ 18'-7" = 55'-9"



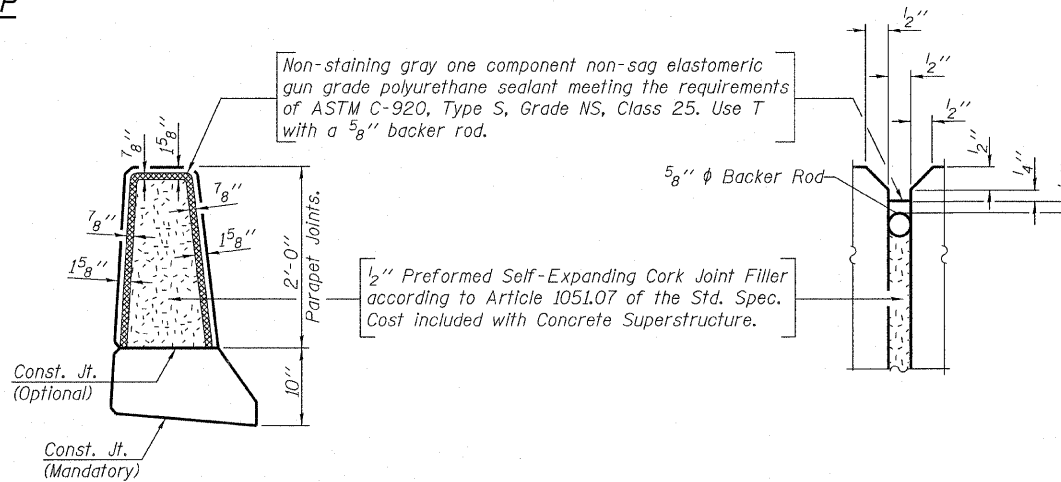
INSIDE ELEVATION OF PARAPET

MINIMUM BAR LAP

(Parapet)
#4 bar = 1'-4"
#8 bar = 3'-5"



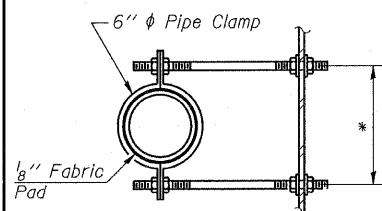
SECTION THRU PARAPET



PARAPET JOINT DETAILS

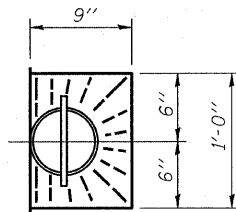
Notes:

The exterior surfaces of the floor drains shall be painted with the finish coat as specified in the special provisions for Cleaning and Painting New Metal Structures. The exterior surfaces of the drains shall be cleaned according to Society of Protective Coatings Spec. SSPC-SP1 prior to painting.
Fiberglass pipe shall conform to ASTM D 2996, with short-time rupture strength hoop tensile stress of 30,000 p.s.i. minimum.

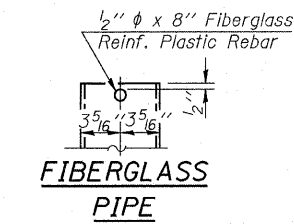


SECTION B-B

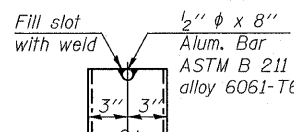
*Dimension as required by Pipe Clamp



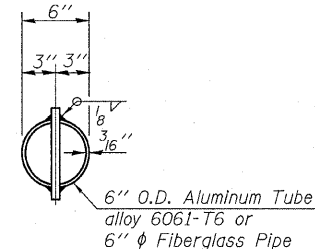
TOP PLAN



FIBERGLASS PIPE

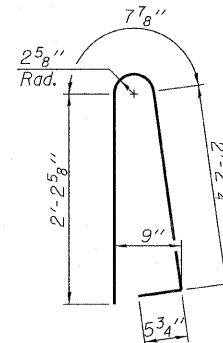


ALUMINUM TUBE

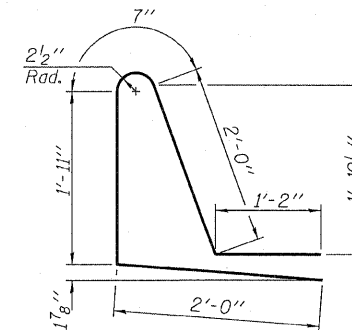


TOP PLAN

(Showing Aluminum Tube)



BAR d(E)



BAR d1(E)

SUPERSTRUCTURE DETAILS
STRUCTURE NO. 083-0063

DESIGNED - P.S.L.
CHECKED - M.D.C.
DRAWN - D.T.M.
CHECKED - S.W.M.

S-I-D

5-16-08

HAMPTON, LENZINI & RENWICK, INC.
CIVIL & STRUCTURAL ENGINEERS
LAND SURVEYORS
3085 STEVENSON DRIVE, SUITE 201
SPRINGFIELD, ILLINOIS 62703
(217) 546-3400
PROJECT NUMBER: 08 0045 130 DATE: 09/02/08

SHEET NO. 11

19 SHEETS

F.A.S. RTE.	SECTION	COUNTY	TOTAL SHEETS	SHEET NO.
2881	30B-1	SALINE	45	25
RALEIGH RD. OVER ELDORADO RESERVOIR SPILLWAY		CONTRACT NO. 98533		
FED. ROAD DIST. NO. 9		ILLINOIS FED. AID PROJECT		