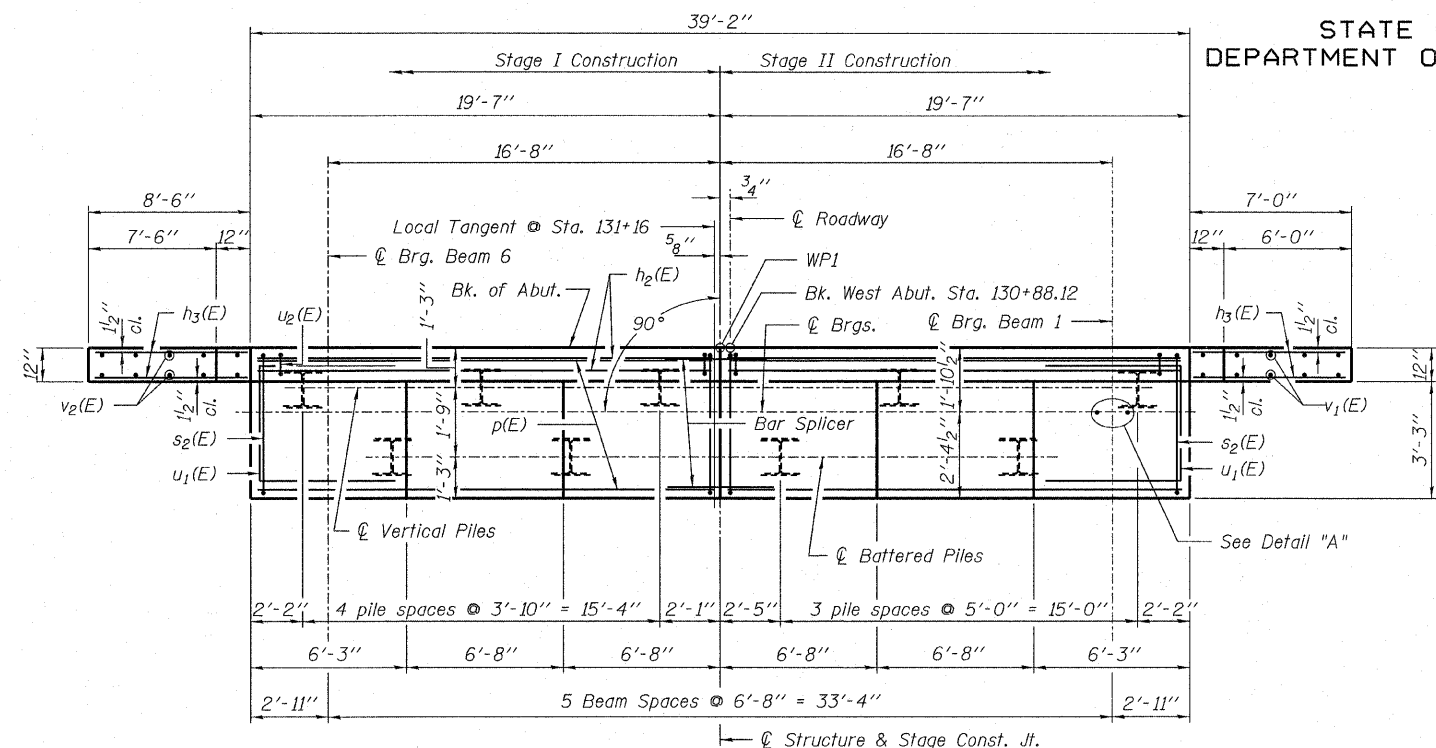
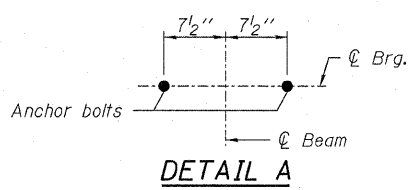


STATE OF ILLINOIS  
DEPARTMENT OF TRANSPORTATION

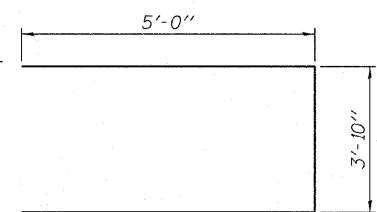


PLAN

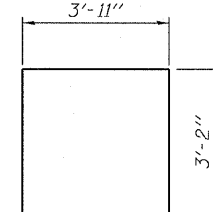
Note: See Sheet 13 of 19 for Anchor Bolt Details  
Space p(E) bars to miss anchor bolts.



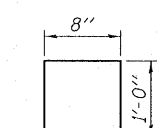
DETAIL A



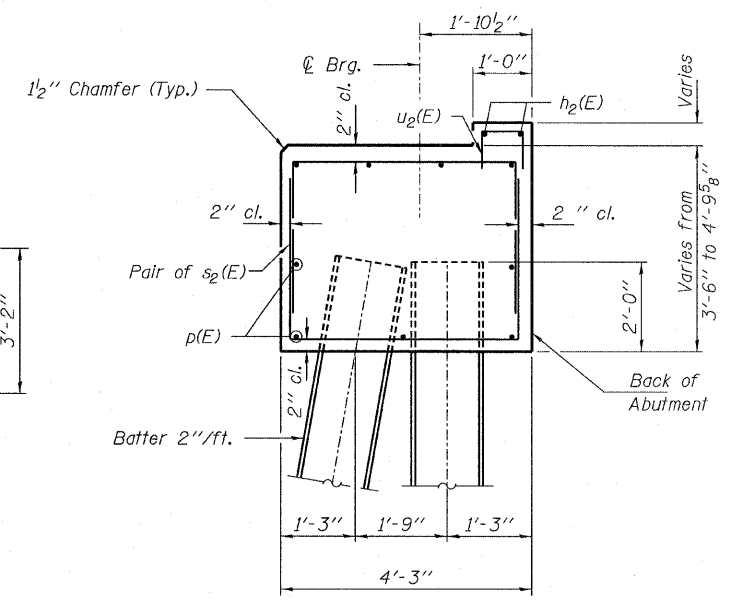
BAR u<sub>1</sub>(E)



BAR s<sub>2</sub>(E)



BAR u<sub>2</sub>(E)



SECTION A-A

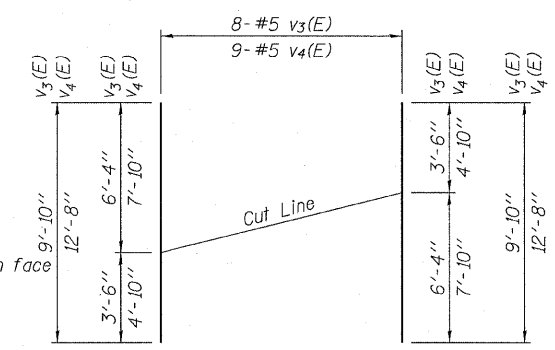
BILL OF MATERIAL - WEST ABUTMENT

BAR	NO.	SIZE	LENGTH	SHAPE
h <sub>1</sub> (E)	16	#5	9'-0"	—
h <sub>2</sub> (E)	4	#5	19'-4"	—
h <sub>3</sub> (E)	8	#5	6'-3"	—
h <sub>4</sub> (E)	8	#5	7'-9"	—
p(E)	18	#8	19'-4"	—
s <sub>2</sub> (E)	70	#5	10'-3"	□
u <sub>1</sub> (E)	8	#6	13'-10"	□
u <sub>2</sub> (E)	40	#5	2'-8"	□
v <sub>3</sub> (E)	8	#5	9'-10"	—
v <sub>4</sub> (E)	9	#5	12'-8"	—

Concrete Structures	Cu. Yd.	30.1
Concrete Encasement	Cu. Yd.	3.15
Reinforcement Bars, Epoxy Coated	Pound	2,740
Furnishing Steel Piles HP10x42	Foot	360
Driving Piles	Foot	360
Test Pile Steel HP10x42	Each	1
Structure Excavation	Cu. Yd.	175

Notes:  
 Concrete encasement not shown for clarity.  
 See sheet 18 of 19 for Concrete Encasement details.



\* FIELD CUTTING DIAGRAM

Order v<sub>3</sub>(E) & v<sub>4</sub>(E) bars full length.  
 Cut as shown and use remainder of bar  
 in opposite face.  
 Note: Pour steps monolithically with cap.

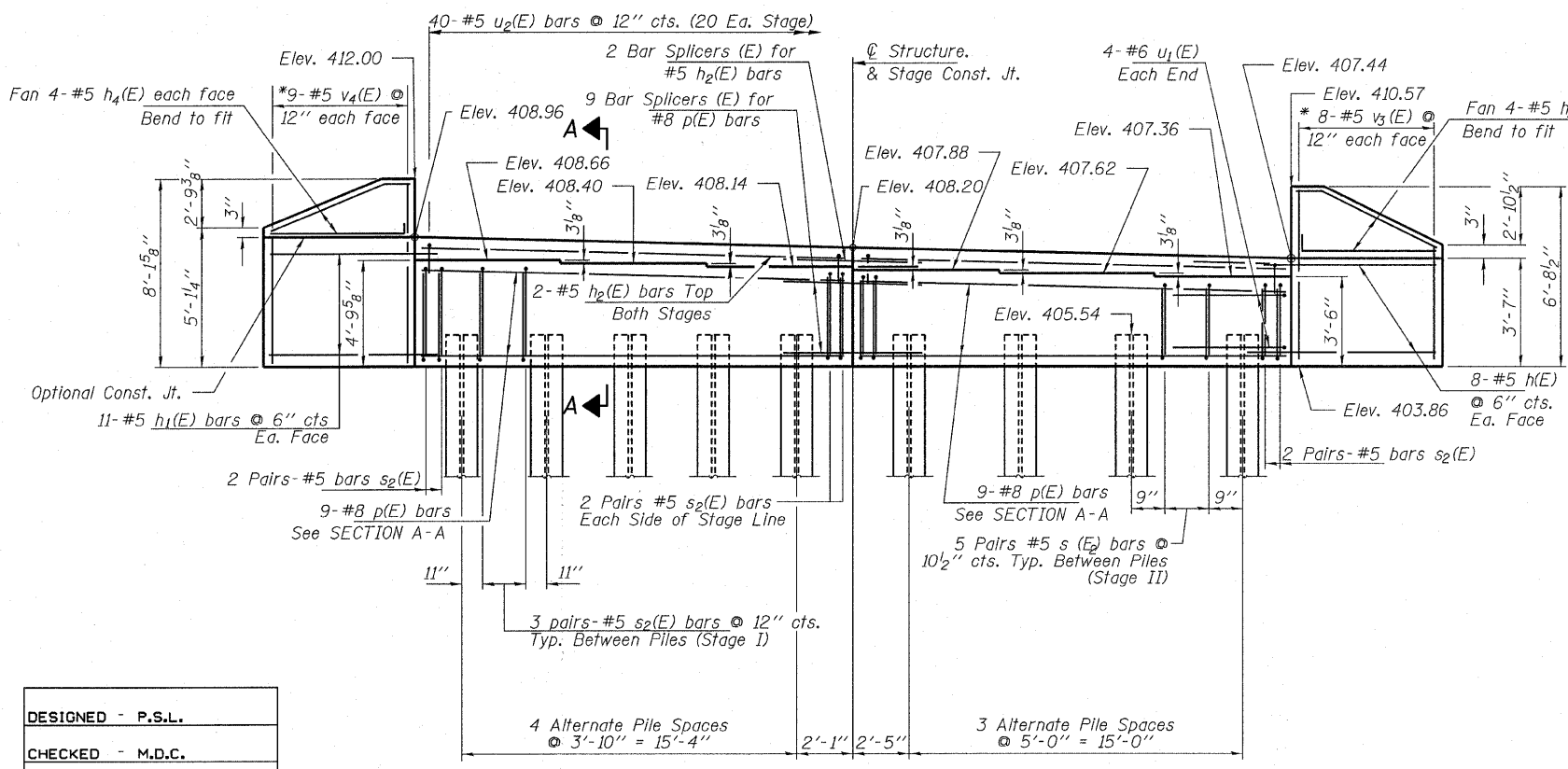
PILE DATA

Type: Steel HP10x42  
 No. Req'd: 9\*\*  
 Allowable Resistance Available: 111 Kips/Pile  
 Nominal Req'd Bearing: 335 Kips/Pile  
 Est. Length: 45 Ft/Pile

Notes: \*\* Includes one test pile to be driven in permanent locations  
 at the West Abutment.

The steel H-Piles shall be according to AASHTO M270  
 Grade 50.

The test piles shall be driven to 110 percent of the Nominal  
 Required Bearing indicated in the pile data information.



ELEVATION  
(Looking West)

DESIGNED - P.S.L.
CHECKED - M.D.C.
DRAWN - D.T.M.
CHECKED - S.W.M.

<b>HAMPTON, LENZINI &amp; RENWICK, INC.</b> CIVIL & STRUCTURAL ENGINEERS LAND SURVEYORS <b>HLR</b> 3085 STEVENSON DRIVE, SUITE 201 SPRINGFIELD, ILLINOIS 62703 (217) 546-3400 PROJECT NUMBER: 08.0045.130 DATE: 09/02/08	SHEET NO. 14	F.A.S. RTE. 2881	SECTION 30B-1	COUNTY SALINE	TOTAL SHEETS 45	SHEET NO. 28
	19 SHEETS	RALEIGH RD. OVER EL Dorado RESERVOIR SPILLWAY		CONTRACT NO. 98533		
		FED. ROAD DIST. NO. 9 ILLINOIS		FED. AID PROJECT		

WEST ABUTMENT  
STRUCTURE NO. 083-0063