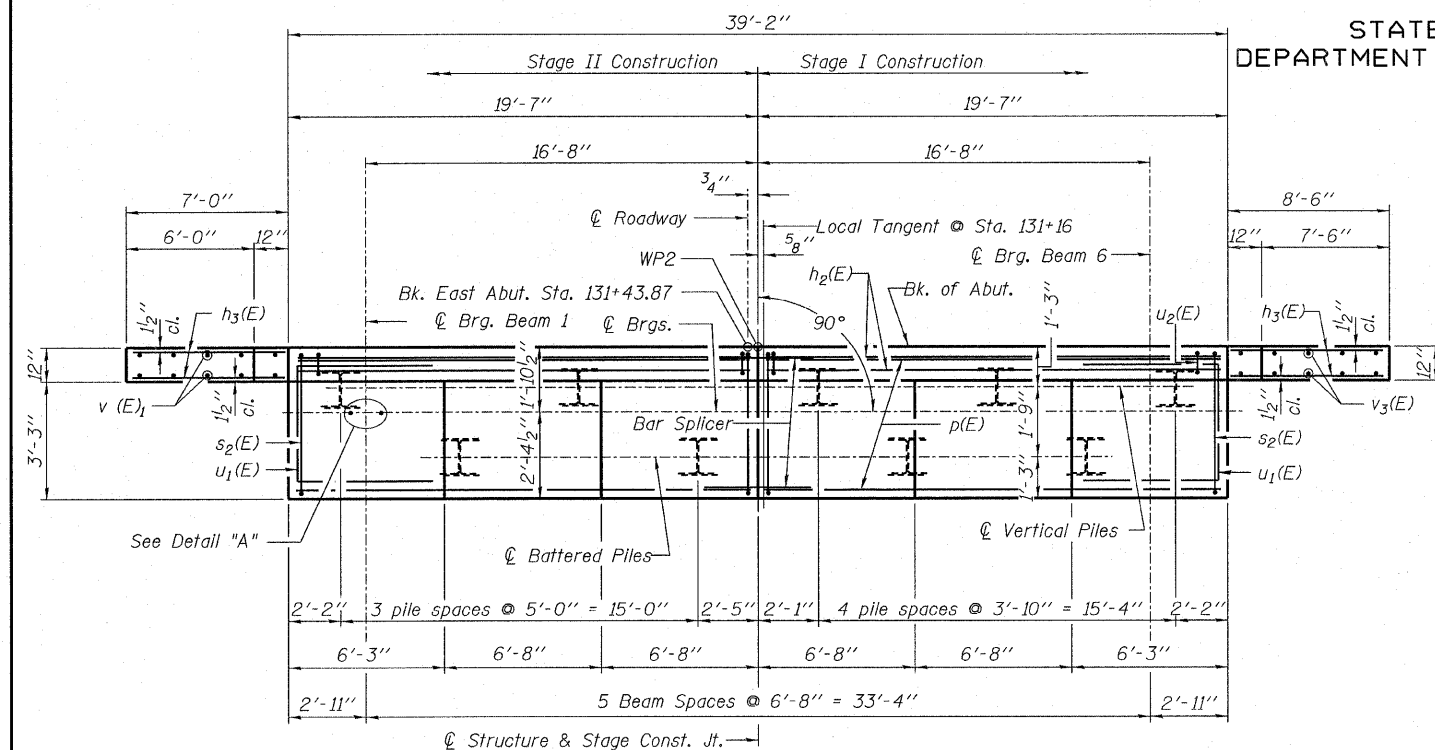
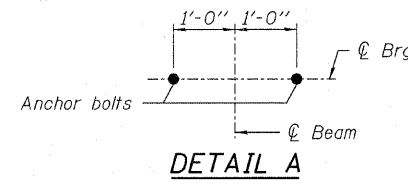


STATE OF ILLINOIS
DEPARTMENT OF TRANSPORTATION

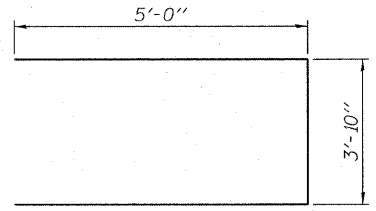
Note: See Sheet 13 of 19 for Anchor Bolt Details
Space p(E) bars to miss anchor bolts.



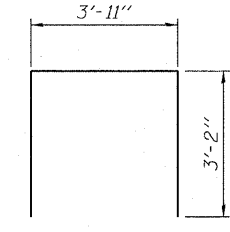
PLAN



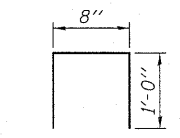
DETAIL A



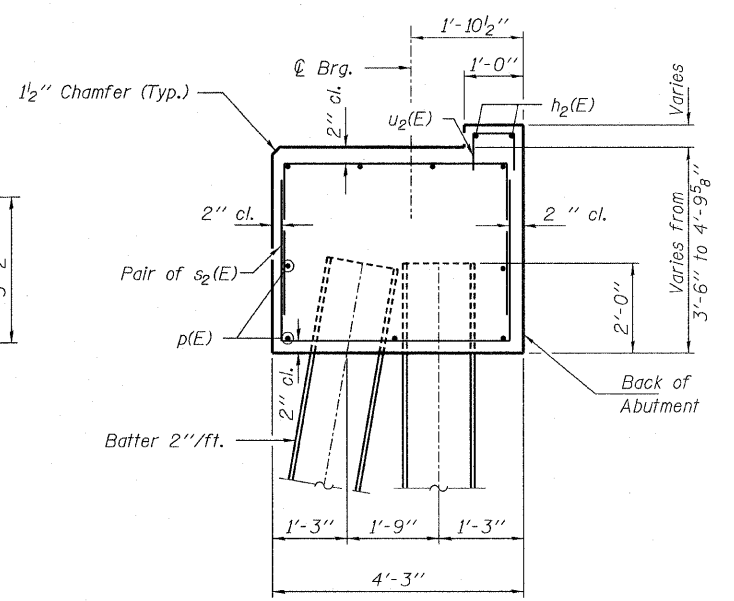
BAR u₁(E)



BAR s₂(E)



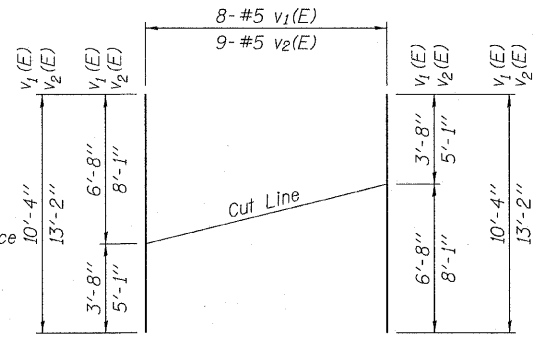
BAR u₂(E)



SECTION A-A

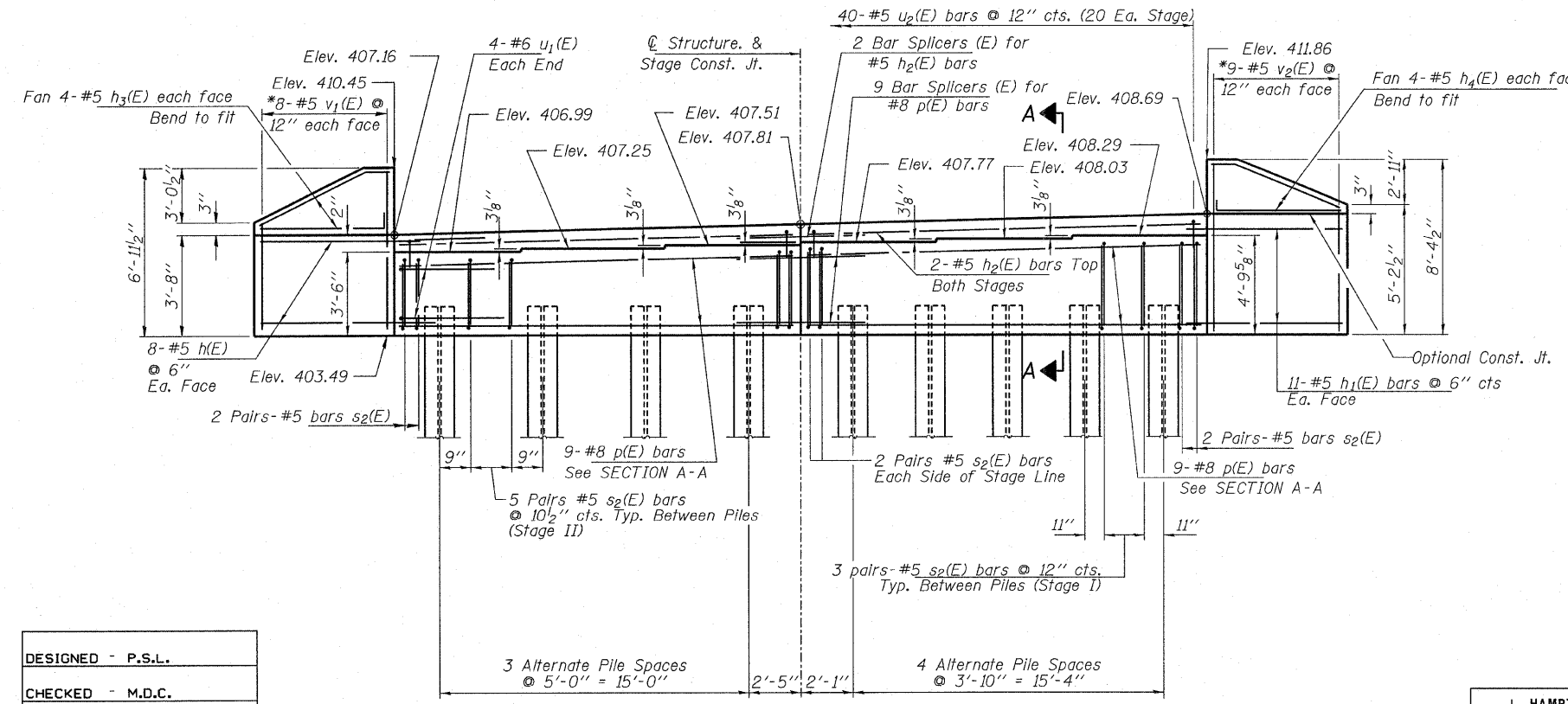
BILL OF MATERIAL - EAST ABUTMENT

BAR	NO.	SIZE	LENGTH	SHAPE	
h(E)	16	#5	9'-0"	—	
h ₁ (E)	22	#5	10'-6"	—	
h ₂ (E)	4	#5	19'-4"	—	
h ₃ (E)	8	#5	6'-3"	—	
h ₄ (E)	8	#5	7'-9"	—	
p(E)	18	#8	19'-4"	—	
s ₂ (E)	70	#5	10'-3"	□	
u ₁ (E)	8	#6	13'-10"	□	
u ₂ (E)	40	#5	2'-8"	□	
v ₁ (E)	8	#5	10'-4"	—	
v ₂ (E)	9	#5	13'-2"	—	
Concrete Structures				Cu. Yd.	30.5
Concrete Encasement				Cu. Yd.	3.15
Reinforcement Bars, Epoxy Coated				Pound	2,750
Furnishing Steel Piles HP10x42				Foot	360
Driving Piles				Foot	360
Test Pile Steel HP10x42				Each	1
Structure Excavation				Cu. Yd.	175



* FIELD CUTTING DIAGRAM

Order v₁(E) & v₂(E) bars full length.
Cut as shown and use remainder of bar
in opposite face.
Note: Pour steps monolithically with cap.



ELEVATION
(Looking East)

PILE DATA

Type.....Steel HP10x42
No. Req'd.....9**
Allowable Resistance Available.....111 Kips/Pile
Nominal Req'd Bearing.....335 Kips/Pile
Est. Length.....45 Ft/Pile

Notes: ** Includes one test pile to be driven in permanent locations
at the East Abutment.

The steel H-Piles shall be according to AASHTO M270
Grade 50.

The test piles shall be driven to 110 percent of the Nominal
Required Bearing indicated in the pile data information.

EAST ABUTMENT
STRUCTURE NO. 083-0063

DESIGNED - P.S.L.
CHECKED - M.D.C.
DRAWN - D.T.M.
CHECKED - S.W.M.

HAMPTON, LENZINI & RENWICK, INC. CIVIL & STRUCTURAL ENGINEERS LAND SURVEYORS HLR 3085 STEVENSON DRIVE, SUITE 201 SPRINGFIELD, ILLINOIS 62703 (217) 546-3400	SHEET NO. 15	F.A.S. RTE.	SECTION	COUNTY	TOTAL SHEETS	SHEET NO.
		2881	30B-1	SALINE	45	29
19 SHEETS		RALEIGH RD. OVER ELDORADO RESERVOIR SPILLWAY		CONTRACT NO. 98533		
PROJECT NUMBER: 08 0045.130		DATE: 09/02/08		FED. ROAD DIST. NO. 9 ILLINOIS FED. AID PROJECT		