

CODE NO.	ITEM	UNIT	TOTAL QUANTITY	CONSTR. CODE
				NHPP 80% FED / 20% STATE BRIDGE 0047 S.N. 016-0811
20200100	EARTH EXCAVATION	CU YD	1085	1085
* 21101615	TOPSOIL FURNISH AND PLACE,4"	SQ YD	79	79
* 25000210	SEEDING, CLASS2A	ACRE	0.25	0.25
* 25000400	NITROGEN FERTILIZER NUTRIENT	POUND	2	2
* 25000600	POTASSIUM FERTILIZER NUTRIENT	POUND	2	2
25100630	EROSION CONTROL BLANKET	SQ YD	79	79
28100803	STONE DUMPED RIPRAP, CLASS A2	TON	18	18
28200200	FILTER FABRIC	SQ YD	14	14
30300112	AGGREGATE SUBGRADE IMPROVEMENT 12"	SQ YD	1625	1625
35101800	AGGREGATE BASE COURSE, TYPE B6"	SQ YD	14	14
40600400	MIXTURE FOR CRACKS, JOINTS, AND FLANGEWAYS	TON	16	16
40600985	PORTLAND CEMENT CONCRETE SURFACE REMOVAL - BUTT JOINT	SQ YD	850	850
40603200	POLYMERIZED HOT-MIX ASPHALT BINDER COURSE, IL-4.75, N50	TON	397	397
40605026	POLYMERIZED HOT-MIX ASPHALT SURFACE COURSE, STONE MATRIX ASPHALT, 9.5, MIX "F", N80	TON	925	925

* SPECIALTY ITEMS

CODE NO.	ITEM	UNIT	TOTAL QUANTITY	CONSTR. CODE
				NHPP 80% FED / 20% STATE BRIDGE 0047 S.N. 016-0811
40700200	POLYMERIZED BITUMINOUS MATERIALS (TACK COAT)	POUND	6378	6378
42000541	PORTLAND CEMENT CONCRETE PAVEMENT 12" (JOINTED)	SQ YD	1625	1625
42001300	PROTECTIVE COAT	SQ YD	717	717
42400200	PORTLAND CEMENT CONCRETE SIDEWALK 5 INCH	SQ FT	60	60
44000500	COMBINATION CURB AND GUTTER REMOVAL	FOOT	1325	1325
44000600	SIDEWALK REMOVAL	SQ FT	60	60
44200990	CLASS B PATCHES, TYPE I,12 INCH	SQ YD	11	11
44200994	CLASS B PATCHES, TYPE II,12 INCH	SQ YD	1064	1064
44200998	CLASS B PATCHES, TYPE III, 12 INCH	SQ YD	164	164
44201000	CLASS B PATCHES, TYPE IV,12 INCH	SQ YD	237	237
44201299	DOWEL BARS 1 1/2"	EACH	2315	2315
44201696	CLASS D PATCHES, TYPE IV,4 INCH	SQ YD	8	8
44213200	SAW CUTS	FOOT	6030	6030
50102400	CONCRETE REMOVAL	CU YD	70.1	70.1
50157300	PROTECTIVE SHIELD	SQ YD	1181	1181
50300255	CONCRETE SUPERSTRUCTURE	CU YD	74.5	74.5

* SPECIALTY ITEMS

FILE NAME = Q:\Engineering\LiveProjects\13034 IDOT DUR Chest\NO 15\CADD\CADD Sheets\Civil\1160668-ah-500.dgn



USER NAME = JENT	DESIGNED - JMT	REVISED -
DRAWN - JN	REVISIONS -	
PLOT SCALE = 2.0000' / 1" =	CHECKED - JMT	REVISED -
PLOT DATE = 10/17/2019	DATE - 09/20/2019	REVISED -

STATE OF ILLINOIS
DEPARTMENT OF TRANSPORTATION

SUMMARY OF QUANTITIES
LAKE COOK ROAD AT US 41

SCALE: SHEET OF SHEETS STA. TO STA.

F.A.P. RTE.	SECTION	COUNTY	TOTAL SHEETS	SHEET NO.
379	2010-120-1	COOK	88	3
CONTRACT NO. 60M68			ILLINOIS FED. AID PROJECT	

CODE NO.	ITEM	UNIT	TOTAL QUANTITY	CONSTR. CODE
				NHPP 80% FED / 20% STATE BRIDGE 0047 S.N. 016-0811
50300260	BRIDGE DECK GROOVING	SQ YD	1850	1850
50300300	PROTECTIVE COAT	SQ YD	2540	2540
50500405	FURNISHING AND ERECTING STRUCTURAL STEEL	POUND	2450	2450
50800205	REINFORCEMENT BARS, EPOXY COATED	POUND	8530	8530
50800515	BAR SPLICERS	EACH	48	48
52000110	PREFORMED JOINT STRIP SEAL	FOOT	206	206
59000200	EPOXY CRACK INJECTION	FOOT	6	6
60255700	MANHOLES TO BE ADJUSTED WITH NEW TYPE 1 FRAME, OPEN LID	EACH	2	2
60255800	MANHOLES TO BE ADJUSTED WITH NEW TYPE 1 FRAME, CLOSED LID	EACH	1	1
60260100	INLETS TO BE ADJUSTED	EACH	4	4
66900200	NON-SPECIAL WASTE DISPOSAL	CU YD	530	530
64200116	SHOULDER RUMBLE STRIPS, 16 INCH	FOOT	2216	2216
66900530	SOIL DISPOSAL ANALYSIS	EACH	2	2
67000400	ENGINEER'S FIELD OFFICE, TYPE A	CAL MO	12	12
66901001	REGULATED SUBSTANCES PRE-CONSTRUCTION PLAN	L SUM	1	1
67100100	MOBILIZATION	L SUM	1	1
66901003	REGULATED SUBSTANCES FINAL CONSTRUCTION REPORT	L SUM	1	1
70107025	CHANGEABLE MESSAGE SIGN	CAL DA	56	56
66901006	REGULATED SUBSTANCES MONITORING	CAL DA	10	10

* SPECIALTY ITEMS

CODE NO.	ITEM	UNIT	TOTAL QUANTITY	CONSTR. CODE
				NHPP 80% FED / 20% STATE BRIDGE 0047 S.N. 016-0811
* 70300900	PAVEMENT MARKING TAPE, TYPE IV - LETTERS AND SYMBOLS	SQ FT	3075	3075
* 70300904	PAVEMENT MARKING TAPE, TYPE IV4"	FOOT	26652	26652
* 70300905	PAVEMENT MARKING TAPE, TYPE IV5"	FOOT	3680	3680
* 70300906	PAVEMENT MARKING TAPE, TYPE IV6"	FOOT	5735	5735
* 70300908	PAVEMENT MARKING TAPE, TYPE IV8"	FOOT	1068	1068
* 70300912	PAVEMENT MARKING TAPE, TYPE IV12"	FOOT	384	384
* 70300924	PAVEMENT MARKING TAPE, TYPE IV24"	FOOT	724	724
70400100	TEMPORARY CONCRETE BARRIER	FOOT	900	900
70400200	RELOCATE TEMPORARY CONCRETE BARRIER	FOOT	1075	1075
70600250	IMPACT ATTENUATORS, TEMPORARY (NON-REDIRECTIVE), TEST LEVEL 3	EACH	2	2
70600260	IMPACT ATTENUATORS, TEMPORARY (FULLY REDIRECTIVE, NARROW), TEST LEVEL 3	EACH	4	4
70600332	IMPACT ATTENUATORS, RELOCATE (FULLY REDIRECTIVE, NARROW), TEST LEVEL 3	EACH	4	4
72000100	SIGN PANEL - TYPE 1	SQ FT	52	52

* SPECIALTY ITEMS

FILE NAME = Q:\Engineering\Live\Projects\13024 IDOT DUR Chest\NO 15\CADD\CADD Sheets\Civil\160668-ahr-S00.dgn



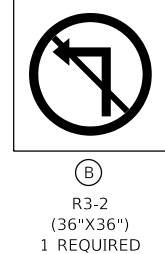
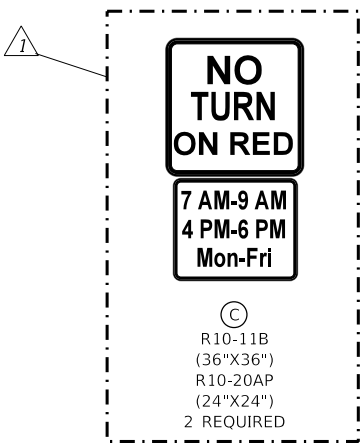
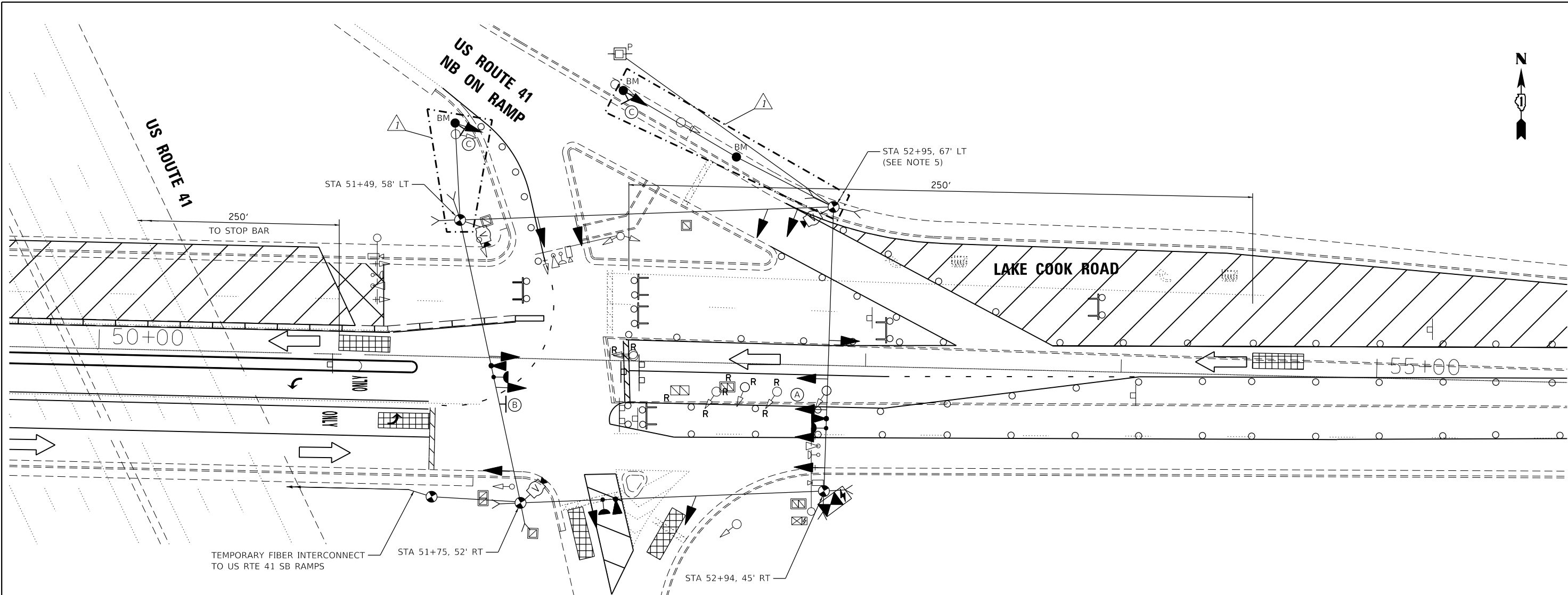
USER NAME = JENT	DESIGNED - JMT	REVISED -
PLOT SCALE = 2.0000' / 1" =	DRAWN - JN	REVISED -
PLOT DATE = 10/17/2019	CHECKED - JMT	REVISED -
	DATE - 09/20/2019	REVISED -

STATE OF ILLINOIS
DEPARTMENT OF TRANSPORTATION

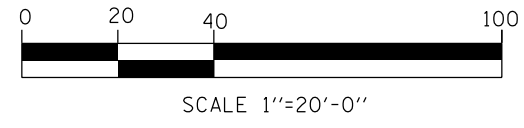
SUMMARY OF QUANTITIES
LAKE COOK ROAD AT US 41

SCALE: SHEET OF SHEETS STA. TO STA.

F.A.P. RTE.	SECTION	COUNTY	TOTAL SHEETS	SHEET NO.
379	2010-120-1	COOK	88	4
CONTRACT NO. 60M68			ILLINOIS FED. AID PROJECT	



- NOTES:
- TEMPORARY FIBER INTERCONNECT IS INCLUDED IN TEMPORARY TRAFFIC SIGNAL INSTALLATION PAY ITEM.
 - THE TEMPORARY TRAFFIC SIGNAL SHALL HAVE THE SIGNAL HEAD DISPLAYS, SIGNAL HEAD PLACEMENT AND CONTROLLER PHASING MATCH THE EXISTING TRAFFIC SIGNAL, AT THE TIME OF THE TURN ON, IF NO TRAFFIC STAGING IS IN PLACE OR WILL NOT BE STAGED ON THE DAY OF THE TURN ON.
 - THE EXISTING SIGNAL HEADS NOT IN USE SHALL BE BAGGED AND DISABLED DURING TEMPORARY TRAFFIC SIGNAL OPERATIONS.
 - IF TEMPORARY TRAFFIC SIGNALS ARE IN CONFLICT WITH THE PERMANENT TRAFFIC SIGNALS, THE MAST ARMS SHALL BE ROTATED OR REMOVED AND STORED OUTSIDE OF R.O.W. AND WILL BE THE CONTRACTOR'S RESPONSIBILITY TO KEEP THE EQUIPMENT SAFE. THIS IS INCLUDED IN THE COST OF THE TEMPORARY TRAFFIC SIGNAL INSTALLATION.
 - SIDEWALK REMOVAL REQUIRED TO INSTALL TEMPORARY WOOD POLE IN NE CORNER.



REMOVAL AND RELOCATION NOTES:

THE FOLLOWING ITEMS SHALL BE REMOVED BY THE CONTRACTOR AND SHALL BE DISPOSED OF BY THEM OUTSIDE THE RIGHT-OF-WAY AT THEIR EXPENSE. THE SALVAGE VALUE OF THE REMOVED EQUIPMENT SHALL BE REFLECTED IN THE CONTRACT BID PRICE.

- 3 EACH SIGNAL HEAD, 1-FACE, 3-SECTION
- 3 EACH SIGNAL POST



USER NAME = tmiller	DESIGNED - TGM	REVISED - 12/13/2019 TGM
DRAWN - JN	REVISOR -	
PLOT SCALE = 40.0000' / in.	CHECKED - JMT	REVISOR -
PLOT DATE = 12/11/2019	DATE - 09/20/2019	REVISOR -

STATE OF ILLINOIS
DEPARTMENT OF TRANSPORTATION

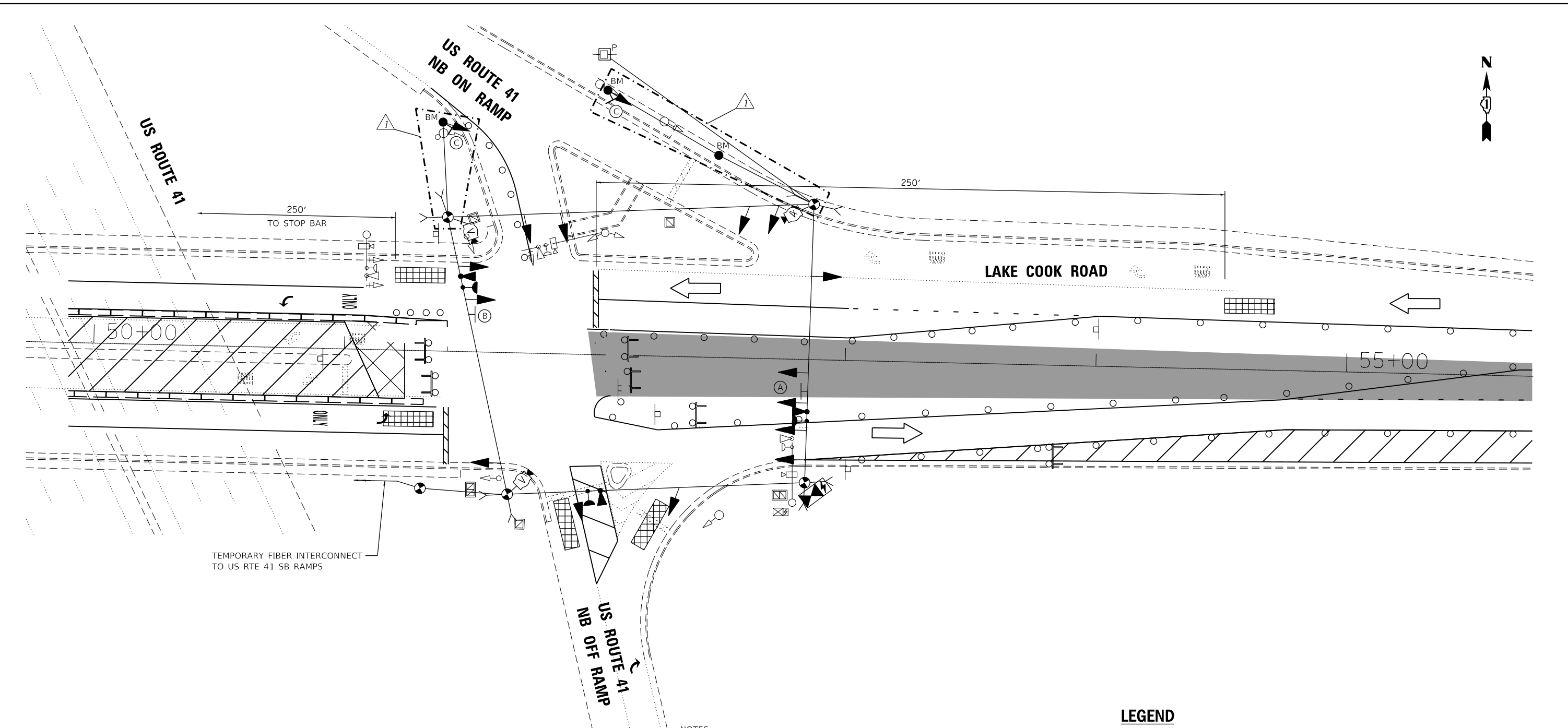
REMOVE EXISTING TRAFFIC SIGNAL AND TEMPORARY TRAFFIC SIGNAL INSTALLATION PLAN - STAGE I
LAKE COOK ROAD AT US 41 NB RAMPS

SCALE: SHEET TS-08 OF TS-23 SHEETS STA. TO STA.

F.A.P. RTE. 379	SECTION 2010-120-I	COUNTY COOK	TOTAL SHEETS 88	SHEET NO. 36
CONTRACT NO. 60M68				

TS#1550

TS SHT NO. 9
 FILE NAME = Q:\Engineering\Live\Projects\13034 IDOT DUR Chest\NO 15\CADD\CADD Sheets\Civil\1166M68-shr-Temp TS Plan-Lake Cook-East Stage 2.dgn

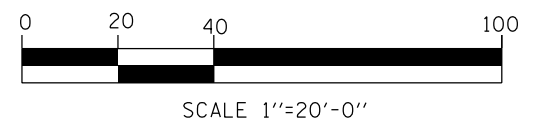


LEGEND

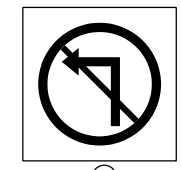
PORTLAND CEMENT CONCRETE PAVEMENT 12" (JOINTED)

NOTES:

1. TEMPORARY FIBER INTERCONNECT IS INCLUDED IN TEMPORARY TRAFFIC SIGNAL PAY ITEM.
2. THE TEMPORARY TRAFFIC SIGNAL SHALL HAVE THE SIGNAL HEAD DISPLAYS, SIGNAL HEAD PLACEMENT AND CONTROLLER PHASING MATCH THE EXISTING TRAFFIC SIGNAL, AT THE TIME OF THE TURN ON, IF NO TRAFFIC STAGING IS IN PLACE OR WILL NOT BE STAGED ON THE DAY OF THE TURN ON.
3. THE EXISTING SIGNAL HEADS NOT IN USE SHALL BE BAGGED AND DISABLED DURING TEMPORARY TRAFFIC SIGNAL OPERATIONS.
4. IF TEMPORARY TRAFFIC SIGNALS ARE IN CONFLICT WITH THE PERMANENT TRAFFIC SIGNALS, THE MAST ARMS SHALL BE ROTATED OR REMOVED AND STORED OUTSIDE OF R.O.W. AND WILL BE THE CONTRACTOR'S RESPONSIBILITY TO KEEP THE EQUIPMENT SAFE. THIS IS INCLUDED IN THE COST OF THE TEMPORARY TRAFFIC SIGNAL INSTALLATION.



A
 R10-5
 (30" X 36")
 1 REQUIRED



B
 R3-2
 (36" X 36")
 1 REQUIRED

C
 R10-11B
 (36" X 36")
 R10-20AP
 (24" X 24")
 2 REQUIRED



USER NAME = tmler	DESIGNED - TGM	REVISED - 12/13/2019 TGM
DRAWN - JN	REVISOR -	
PLOT SCALE = 40.0000' / in.	CHECKED - JMT	REVISOR -
PLOT DATE = 12/11/2019	DATE - 09/20/2019	REVISOR -

**STATE OF ILLINOIS
 DEPARTMENT OF TRANSPORTATION**

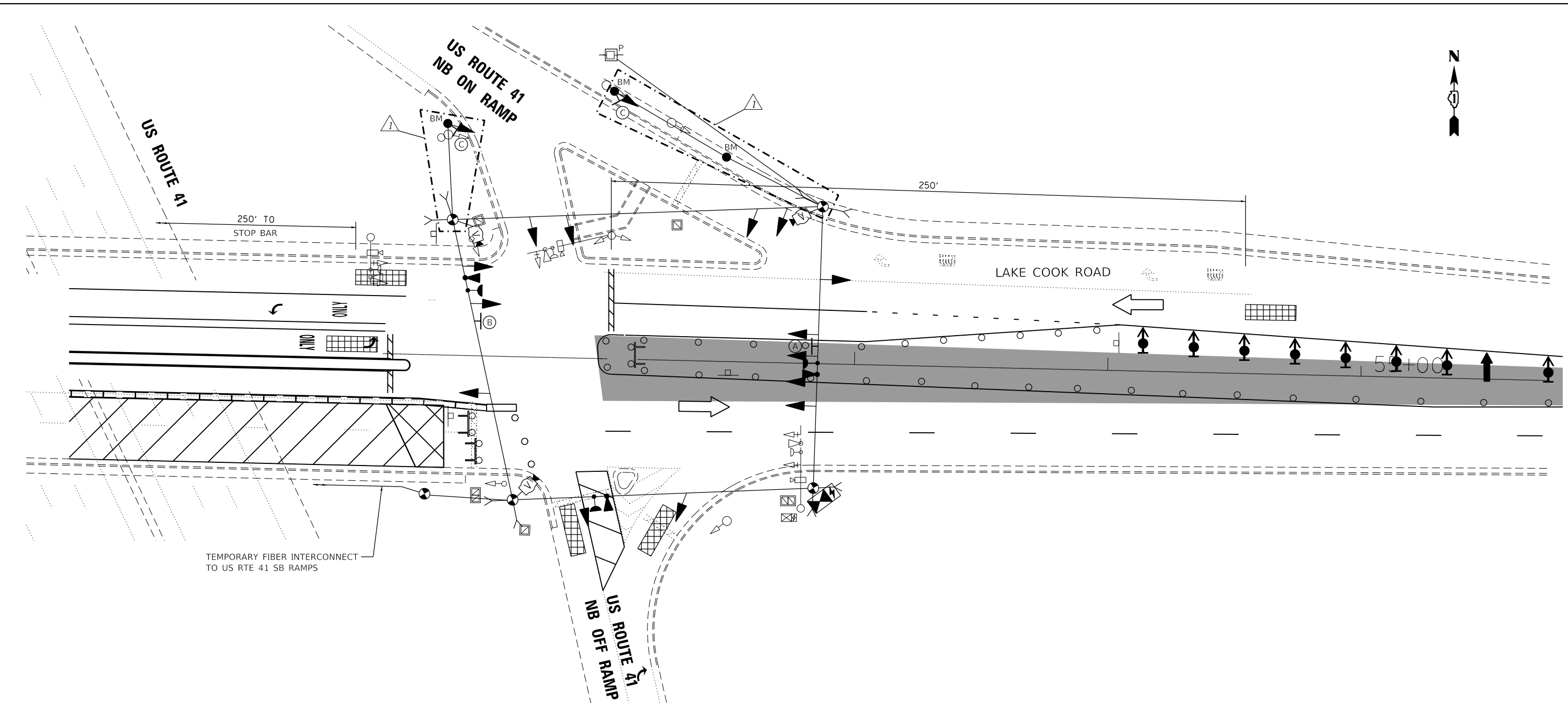
**TEMPORARY TRAFFIC SIGNAL PLAN - STAGE II
 LAKE COOK ROAD AT US 41 NB RAMPS**

SCALE: SHEET TS-09 OF TS-23 SHEETS STA. TO STA.

F.A.P. RTE. 379	SECTION 2010-120-I	COUNTY COOK	TOTAL SHEETS 88	SHEET NO. 37
CONTRACT NO. 60M68			ILLINOIS FED. AID PROJECT	

TS#1550

TS SHT NO. 10
 FILE NAME = Q:\Engineering\Live\Projects\13024 IDOT DUR Chest\NO 15\CADD\CADD Sheets\Civil\1160668-shr-Temp TS Plan_Lake Cook_East Stage 3.dgn



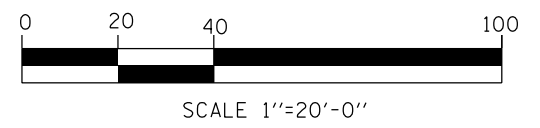
TEMPORARY FIBER INTERCONNECT TO US RTE 41 SB RAMPS

NOTES:

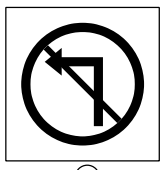
1. TEMPORARY FIBER INTERCONNECT IS INCLUDED IN TEMPORARY TRAFFIC SIGNAL INSTALLATION PAY ITEM.
2. THE TEMPORARY TRAFFIC SIGNAL SHALL HAVE THE SIGNAL HEAD DISPLAYS, SIGNAL HEAD PLACEMENT AND CONTROLLER PHASING MATCH THE EXISTING TRAFFIC SIGNAL, AT THE TIME OF THE TURN ON, IF NO TRAFFIC STAGING IS IN PLACE OR WILL NOT BE STAGED ON THE DAY OF THE TURN ON.
3. THE EXISTING SIGNAL HEADS NOT IN USE SHALL BE BAGGED AND DISABLED DURING TEMPORARY TRAFFIC SIGNAL OPERATIONS.
4. IF TEMPORARY TRAFFIC SIGNALS ARE IN CONFLICT WITH THE PERMANENT TRAFFIC SIGNALS, THE MAST ARMS SHALL BE ROTATED OR REMOVED AND STORED OUTSIDE OF R.O.W. AND WILL BE THE CONTRACTOR'S RESPONSIBILITY TO KEEP THE EQUIPMENT SAFE. THIS IS INCLUDED IN THE COST OF THE TEMPORARY TRAFFIC SIGNAL INSTALLATION.

LEGEND

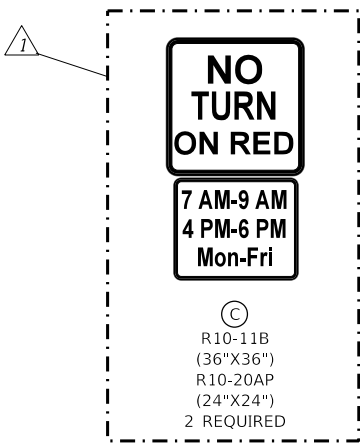
 PORTLAND CEMENT CONCRETE PAVEMENT 12" (JOINTED)



A
 R10-5
 (30" X 36")
 1 REQUIRED

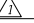


B
 R3-2
 (36" X 36")
 1 REQUIRED



C
 R10-11B
 (36" X 36")
 R10-20AP
 (24" X 24")
 2 REQUIRED



USER NAME = tmiller	DESIGNED - TGM	REVISED -  12/13/2019 TGM
PLOT SCALE = 40.0000' / in.	DRAWN - JN	REVISED -
PLOT DATE = 12/11/2019	CHECKED - JMT	REVISED -
	DATE - 09/20/2019	REVISED -

**STATE OF ILLINOIS
 DEPARTMENT OF TRANSPORTATION**

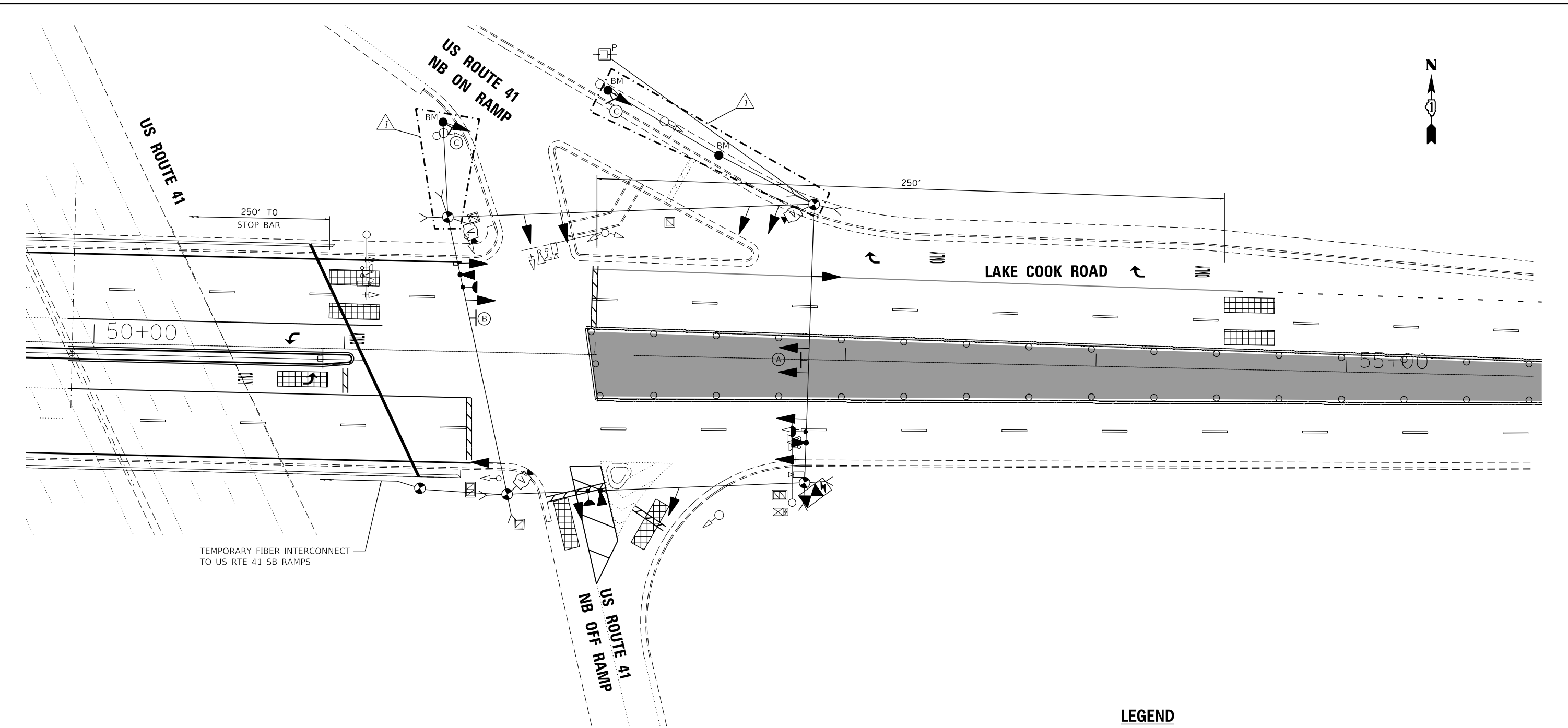
**TEMPORARY TRAFFIC SIGNAL PLAN - STAGE III
 LAKE COOK ROAD AT US 41 NB RAMPS**

SCALE: SHEET TS-10 OF TS-23 SHEETS STA. TO STA.

F.A.P. RTE. 379	SECTION 2010-120-I	COUNTY COOK	TOTAL SHEETS 88	SHEET NO. 38
ILLINOIS FED. AID PROJECT			CONTRACT NO. 60M68	

TS#1550

TS SHT NO. 11
 FILE NAME = Q:\Engineering\Live\Projects\13024 IDOT DUR Chest\NO 15\CADD\CADD Sheets\Civil\1060688-shr-Temp TS Plan_Lake Cook_East Stage 4.dgn



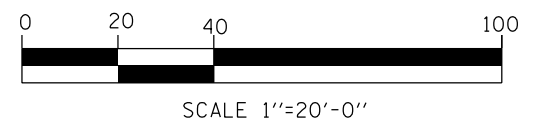
TEMPORARY FIBER INTERCONNECT TO US RTE 41 SB RAMPS

NOTES:

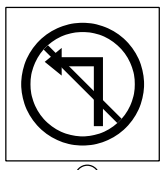
1. TEMPORARY FIBER INTERCONNECT IS INCLUDED IN TEMPORARY TRAFFIC SIGNAL INSTALLATION PAY ITEM.
2. THE TEMPORARY TRAFFIC SIGNAL SHALL HAVE THE SIGNAL HEAD DISPLAYS, SIGNAL HEAD PLACEMENT AND CONTROLLER PHASING MATCH THE EXISTING TRAFFIC SIGNAL, AT THE TIME OF THE TURN ON, IF NO TRAFFIC STAGING IS IN PLACE OR WILL NOT BE STAGED ON THE DAY OF THE TURN ON.
3. THE EXISTING SIGNAL HEADS NOT IN USE SHALL BE BAGGED AND DISABLED DURING TEMPORARY TRAFFIC SIGNAL OPERATIONS.
4. IF TEMPORARY TRAFFIC SIGNALS ARE IN CONFLICT WITH THE PERMANENT TRAFFIC SIGNALS, THE MAST ARMS SHALL BE ROTATED OR REMOVED AND STORED OUTSIDE OF R.O.W. AND WILL BE THE CONTRACTOR'S RESPONSIBILITY TO KEEP THE EQUIPMENT SAFE. THIS IS INCLUDED IN THE COST OF THE TEMPORARY TRAFFIC SIGNAL INSTALLATION.

LEGEND

PORTLAND CEMENT CONCRETE PAVEMENT 12" (JOINTED)



(A)
R10-5
(30" X 36")
1 REQUIRED



(B)
R3-2
(36" X 36")
1 REQUIRED



(C)
R10-11B
(36" X 36")
R10-20AP
(24" X 24")
2 REQUIRED



USER NAME = tmler	DESIGNED - TGM	REVISED - 12/13/2019 TGM
PLOT SCALE = 40.0000' / in.	DRAWN - JN	REVISED -
PLOT DATE = 12/11/2019	CHECKED - JMT	REVISED -
	DATE - 09/20/2019	REVISED -

STATE OF ILLINOIS
DEPARTMENT OF TRANSPORTATION

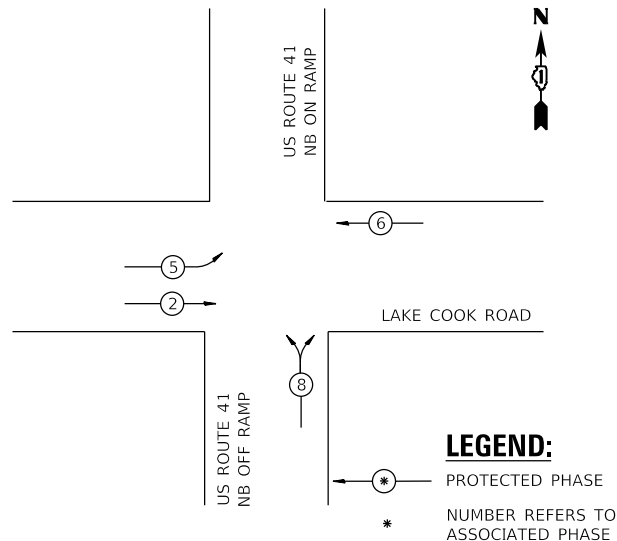
TEMPORARY TRAFFIC SIGNAL PLAN - STAGE IV
LAKE COOK ROAD AT US 41 NB RAMPS

SCALE: SHEET TS-11 OF TS-23 SHEETS STA. TO STA.

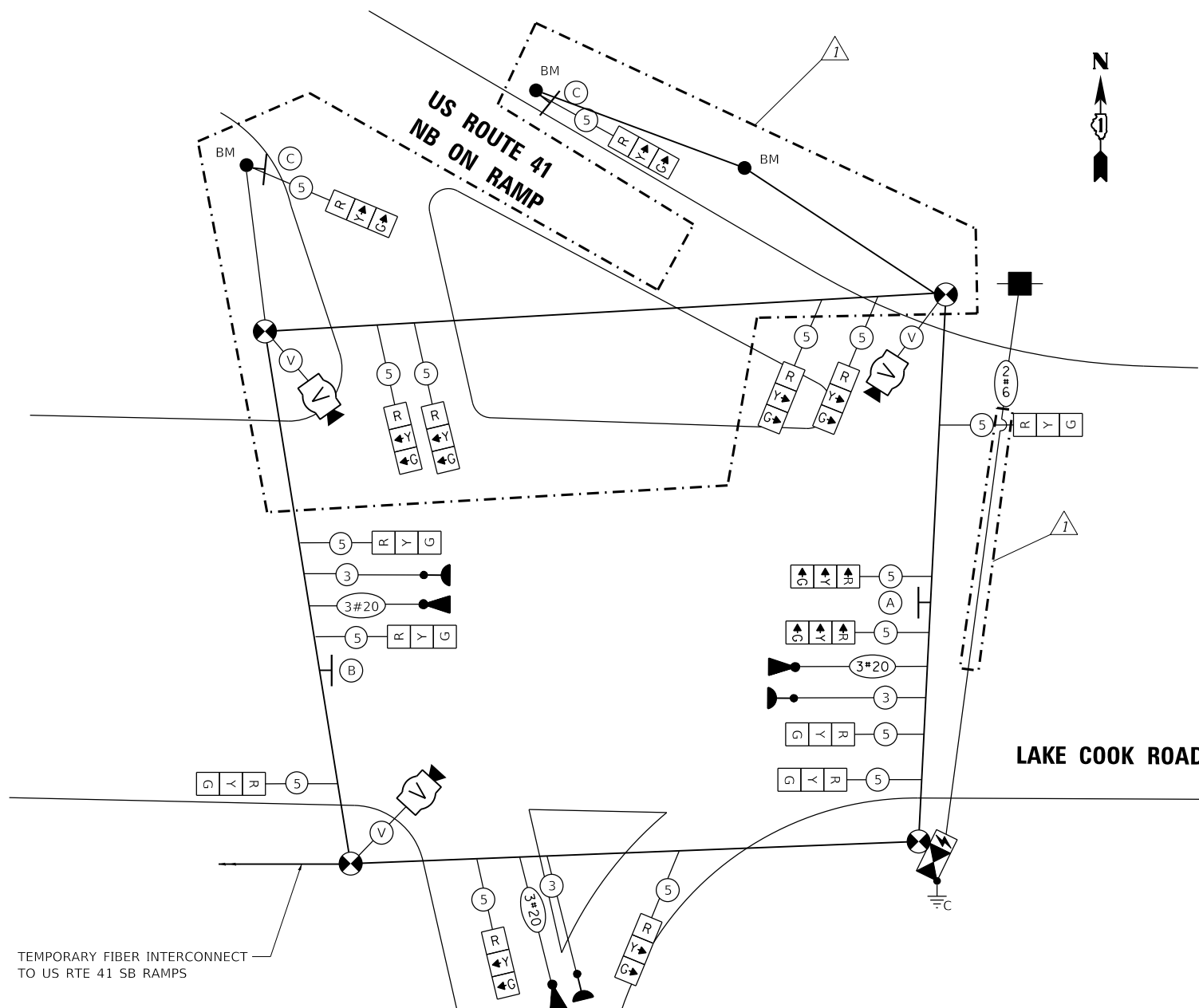
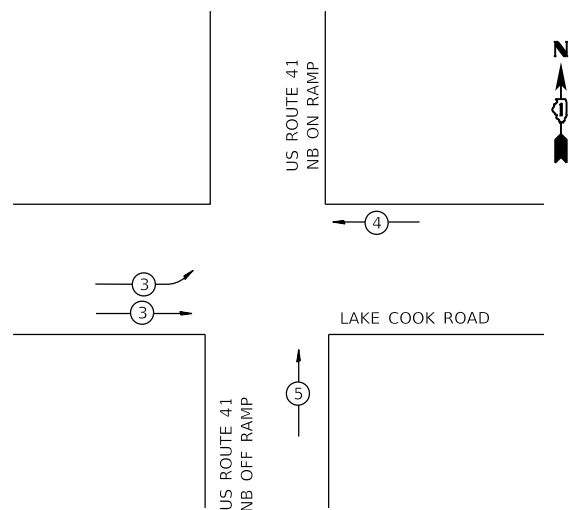
F.A.P. RTE. 379	SECTION 2010-120-I	COUNTY COOK	TOTAL SHEETS 88	SHEET NO. 39
CONTRACT NO. 60M68				ILLINOIS FED. AID PROJECT

TS#1550

TEMPORARY CONTROLLER SEQUENCE



TEMPORARY EMERGENCY VEHICLE PREEMPTION SEQUENCE



TRAFFIC SIGNAL ELECTRICAL SERVICE REQUIREMENTS

TYPE	NO. OF LAMPS	LED WATTAGE	% OPERATION	TOTAL WATTAGE
SIGNAL (RED)	16	11	50	88.0
(YELLOW)	16	20	5	16.0
(GREEN)	16	12	45	86.4
PERMISSIVE ARROW	-	12	10	-
PED. SIGNAL	-	25	100	-
CONTROLLER	1	100	100	100.0
UPS	1	25	100	25.0
VIDEO SYSTEM	1	150	100	150.0
ILLUM. SIGN	-	35	5	-
FLASHER	-	25	50	-
TOTAL =				465.4

ENERGY COSTS TO:
 Illinois Department of Transportation
 Division of Highways / District 1
 201 W Center Court, Schaumburg, Illinois 60196-1096
 ENERGY SUPPLY: CONTACT: JEAN WILL
 PHONE: 847-816-5459
 COMPANY: COMMONWEALTH EDISON
 ACCOUNT NUMBER: ---

NO TURN ON RED

7 AM-9 AM
4 PM-6 PM
Mon-Fri

(C)
 R10-11B (36"X36")
 R10-20AP (24"X24")
 2 REQUIRED

TEMPORARY CABLE PLAN
 N.T.S.

LEFT ON GREEN ARROW ONLY

(A)
 R10-5 (30"X36")
 1 REQUIRED

(B)
 R3-2 (36"X36")
 1 REQUIRED

- NOTES:
1. TEMPORARY FIBER INTERCONNECT IS INCLUDED IN TEMPORARY TRAFFIC SIGNAL INSTALLATION PAY ITEM.
 2. THE TEMPORARY TRAFFIC SIGNAL SHALL HAVE THE SIGNAL HEAD DISPLAYS, SIGNAL HEAD PLACEMENT AND CONTROLLER PHASING MATCH THE EXISTING TRAFFIC SIGNAL, AT THE TIME OF THE TURN ON, IF NO TRAFFIC STAGING IS IN PLACE OR WILL NOT BE STAGED ON THE DAY OF THE TURN ON.
 3. THE EXISTING SIGNAL HEADS NOT IN USE SHALL BE BAGGED AND DISABLED DURING TEMPORARY TRAFFIC SIGNAL OPERATIONS.
 4. IF TEMPORARY TRAFFIC SIGNALS ARE IN CONFLICT WITH THE PERMANENT TRAFFIC SIGNALS, THE MAST ARMS SHALL BE ROTATED OR REMOVED AND STORED OUTSIDE OF R.O.W. AND WILL BE THE CONTRACTOR'S RESPONSIBILITY TO KEEP THE EQUIPMENT SAFE. THIS IS INCLUDED IN THE COST OF THE TEMPORARY TRAFFIC SIGNAL INSTALLATION.

TS SHT NO. 12

FILE NAME = Q:\Engineering\Live\Projects\13024 IDOT DUR Chest\NO 15\CADD\CADD Sheets\Civil\160668-shr-Temp TS Cable Plan-Lake Cook-EAST.dgn



USER NAME = tmler	DESIGNED - TGM	REVISED - 12/13/2019 TGM
DRAWN - GP	REVISIONS -	
PLOT SCALE = 40.0000' / in.	CHECKED - JMT	REVISIONS -
PLOT DATE = 12/11/2019	DATE - 09/20/2019	REVISIONS -

STATE OF ILLINOIS
 DEPARTMENT OF TRANSPORTATION

TEMPORARY CABLE PLAN, TEMPORARY PHASE DESIGNATION DIAGRAM AND TEMPORARY EMERGENCY VEHICLE PREEMPTION SEQUENCE
 LAKE COOK ROAD AT US 41 NB RAMPS

F.A.P. RTE. 379	SECTION 2010-120-I	COUNTY COOK	TOTAL SHEETS 88	SHEET NO. 40
CONTRACT NO. 60M68				
ILLINOIS FED. AID PROJECT				

TS#1550

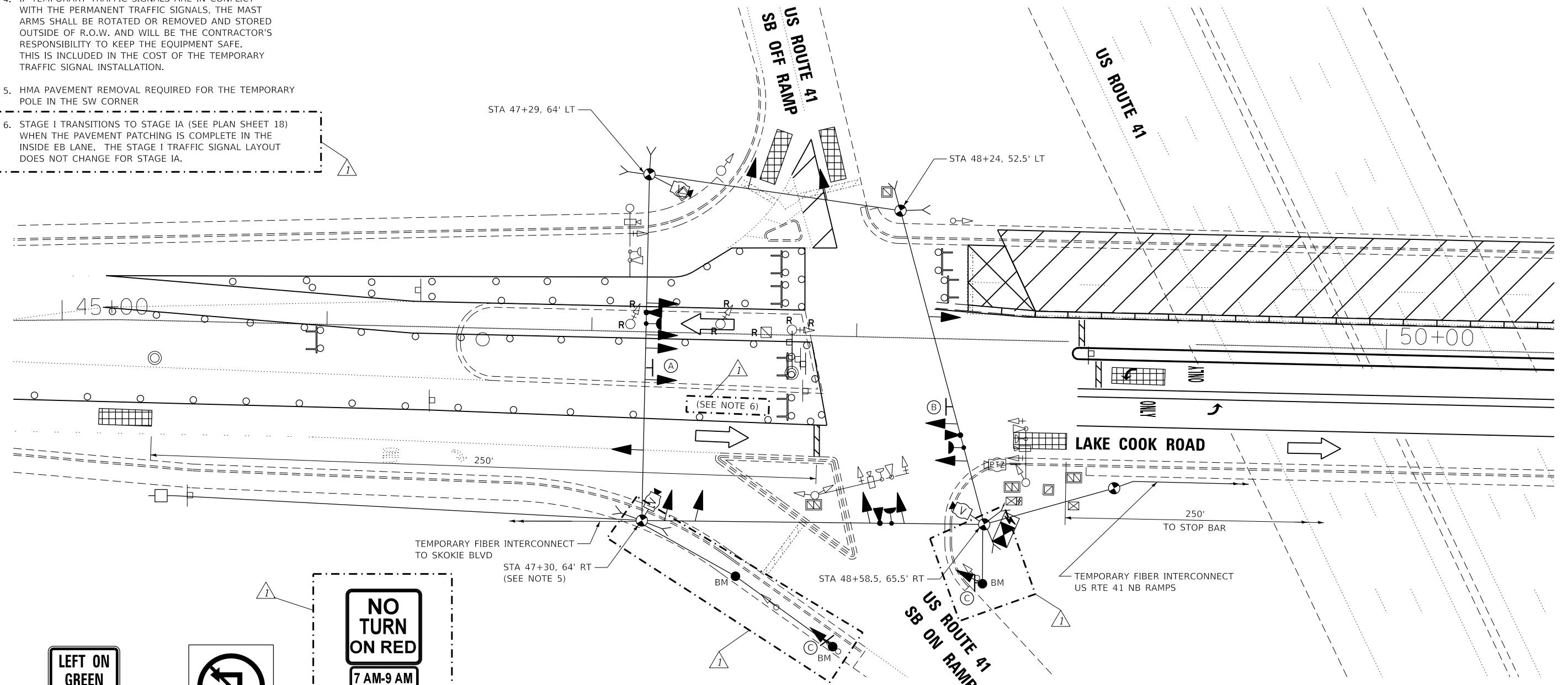
NOTES:

- TEMPORARY FIBER INTERCONNECT IS INCLUDED IN TEMPORARY TRAFFIC SIGNAL INSTALLATION PAY ITEM.
- THE TEMPORARY TRAFFIC SIGNAL SHALL HAVE THE SIGNAL HEAD DISPLAYS, SIGNAL HEAD PLACEMENT AND CONTROLLER PHASING MATCH THE EXISTING TRAFFIC SIGNAL, AT THE TIME OF THE TURN ON, IF NO TRAFFIC STAGING IS IN PLACE OR WILL NOT BE STAGED ON THE DAY OF THE TURN ON.
- THE EXISTING SIGNAL HEADS NOT IN USE SHALL BE BAGGED AND DISABLED DURING TEMPORARY TRAFFIC SIGNAL OPERATIONS.
- IF TEMPORARY TRAFFIC SIGNALS ARE IN CONFLICT WITH THE PERMANENT TRAFFIC SIGNALS, THE MAST ARMS SHALL BE ROTATED OR REMOVED AND STORED OUTSIDE OF R.O.W. AND WILL BE THE CONTRACTOR'S RESPONSIBILITY TO KEEP THE EQUIPMENT SAFE. THIS IS INCLUDED IN THE COST OF THE TEMPORARY TRAFFIC SIGNAL INSTALLATION.
- HMA PAVEMENT REMOVAL REQUIRED FOR THE TEMPORARY POLE IN THE SW CORNER
- STAGE I TRANSITIONS TO STAGE IA (SEE PLAN SHEET 18) WHEN THE PAVEMENT PATCHING IS COMPLETE IN THE INSIDE EB LANE. THE STAGE I TRAFFIC SIGNAL LAYOUT DOES NOT CHANGE FOR STAGE IA.

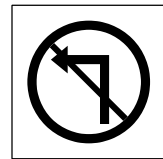
REMOVAL AND RELOCATION NOTES:

THE FOLLOWING ITEMS SHALL BE REMOVED BY THE CONTRACTOR AND SHALL BE DISPOSED OF BY THEM OUTSIDE THE RIGHT-OF-WAY AT THEIR EXPENSE. THE SALVAGE VALUE OF THE REMOVED EQUIPMENT SHALL BE REFLECTED IN THE CONTRACT BID PRICE.

- 3 EACH SIGNAL HEAD, 1-FACE, 3-SECTION
- 3 EACH SIGNAL POST



A
R10-5
(30"X36")
1 REQUIRED



B
R3-2
(36"X36")
1 REQUIRED



C
R10-11B
(36"X36")
R10-20AP
(24"X24")
2 REQUIRED



SCALE 1"=20'-0"

TS SHT NO. 15

FILE NAME = Q:\Engineering\Live\Projects\13024 IDOT DUR Chest\NO 15\CADD\CADD Sheets\Civil\106068-shr-temp TS Plan_Lake Cook_WEST Stage 1.dgn



USER NAME = tmiller	DESIGNED - TGM	REVISED - 12/13/2019 TGM
DRAWN - GP	REVISOR -	
PLOT SCALE = 40.0000' / in.	CHECKED - JMT	REVISOR -
PLOT DATE = 12/11/2019	DATE - 09/20/2019	REVISOR -

STATE OF ILLINOIS
DEPARTMENT OF TRANSPORTATION

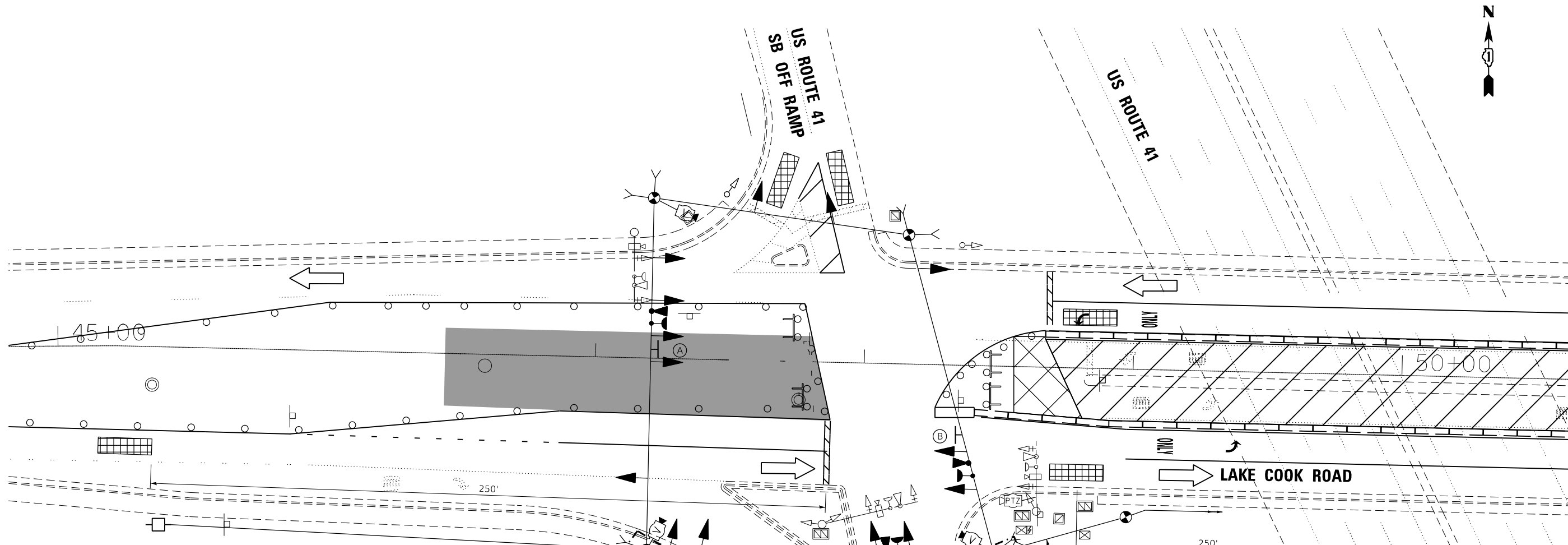
REMOVE EXISTING TRAFFIC SIGNAL AND TEMPORARY TRAFFIC SIGNAL INSTALLATION PLAN - STAGE I
LAKE COOK ROAD AT US 41 SB RAMPS

SCALE: SHEET TS-15 OF TS-23 SHEETS STA. TO STA.

F.A.P. RTE. 379	SECTION 2010-120-I	COUNTY COOK	TOTAL SHEETS 88	SHEET NO. 43
CONTRACT NO. 60M68				

TS#1561

REV. 1/3/20



NOTES:

1. TEMPORARY FIBER INTERCONNECT IS INCLUDED IN TEMPORARY TRAFFIC SIGNAL INSTALLATION PAY ITEM.
2. THE TEMPORARY TRAFFIC SIGNAL SHALL HAVE THE SIGNAL HEAD DISPLAYS, SIGNAL HEAD PLACEMENT AND CONTROLLER PHASING MATCH THE EXISTING TRAFFIC SIGNAL, AT THE TIME OF THE TURN ON, IF NO TRAFFIC STAGING IS IN PLACE OR WILL NOT BE STAGED ON THE DAY OF THE TURN ON.
3. THE EXISTING SIGNAL HEADS NOT IN USE SHALL BE BAGGED AND DISABLED DURING TEMPORARY TRAFFIC SIGNAL OPERATIONS.
4. IF TEMPORARY TRAFFIC SIGNALS ARE IN CONFLICT WITH THE PERMANENT TRAFFIC SIGNALS, THE MAST ARMS SHALL BE ROTATED OR REMOVED AND STORED OUTSIDE OF R.O.W. AND WILL BE THE CONTRACTOR'S RESPONSIBILITY TO KEEP THE EQUIPMENT SAFE. THIS IS INCLUDED IN THE COST OF THE TEMPORARY TRAFFIC SIGNAL INSTALLATION.

LEGEND

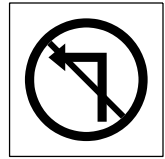
 PORTLAND CEMENT CONCRETE PAVEMENT 12" (JOINTED)

TEMPORARY FIBER INTERCONNECT TO SKOKIE BLVD

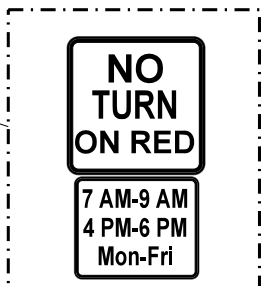
TEMPORARY FIBER INTERCONNECT TO US RTE 41 NB RAMP



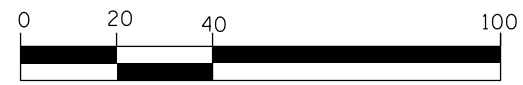
(A)
R10-5
(30"X36")
1 REQUIRED



(B)
R3-2
(36"X36")
1 REQUIRED

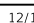


(C)
R10-11B
(36"X36")
R10-20AP
(24"X24")
2 REQUIRED



SCALE 1"=20'-0"



USER NAME = tmler	DESIGNED - TGM	REVISED -  12/13/2019 TGM
PLOT SCALE = 40.0000' / in.	DRAWN - AB	REVISED -
PLOT DATE = 12/11/2019	CHECKED - JMT	REVISED -
	DATE - 09/20/2019	REVISED -

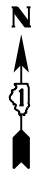
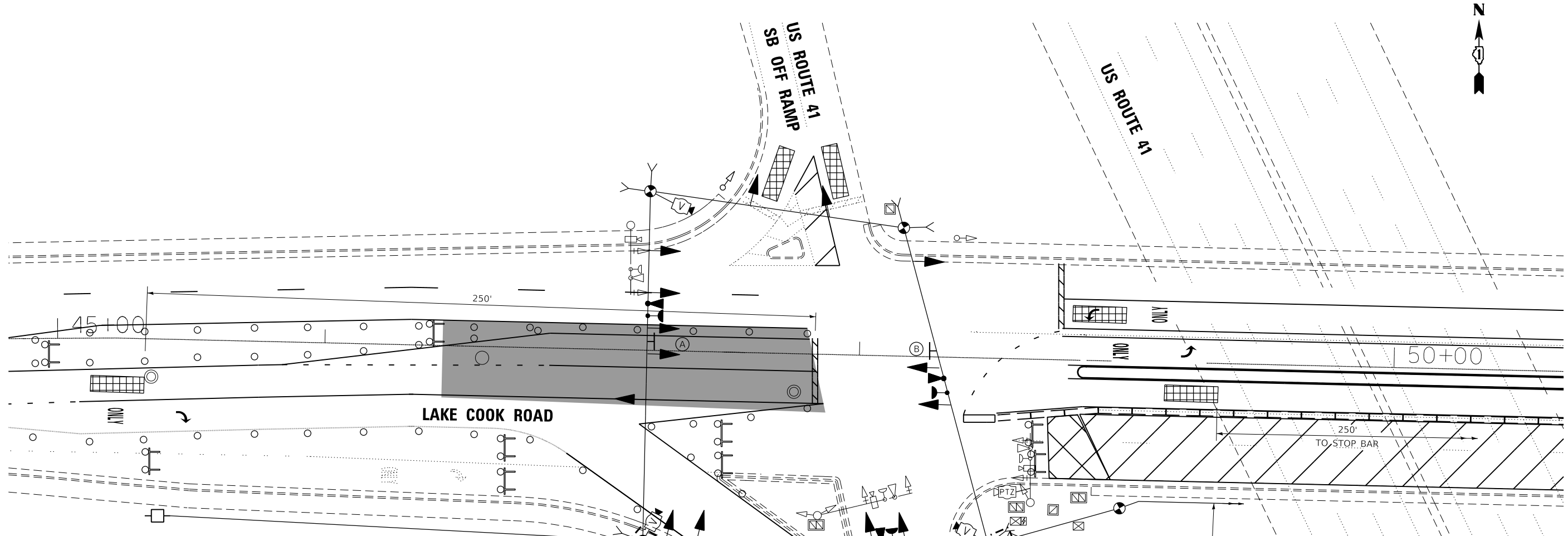
STATE OF ILLINOIS
DEPARTMENT OF TRANSPORTATION

TEMPORARY TRAFFIC SIGNAL PLAN - STAGE II
LAKE COOK ROAD AT US 41 SB RAMP

SCALE: SHEET TS-16 OF TS-23 SHEETS STA. TO STA.

F.A.P. RTE. 379	SECTION 2010-120-I	COUNTY COOK	TOTAL SHEETS 88	SHEET NO. 44
CONTRACT NO. 60M68				
ILLINOIS FED. AID PROJECT				

TS#1561



NOTES:

- TEMPORARY FIBER INTERCONNECT IS INCLUDED IN TEMPORARY TRAFFIC SIGNAL INSTALLATION PAY ITEM.
- THE TEMPORARY TRAFFIC SIGNAL SHALL HAVE THE SIGNAL HEAD DISPLAYS, SIGNAL HEAD PLACEMENT AND CONTROLLER PHASING MATCH THE EXISTING TRAFFIC SIGNAL, AT THE TIME OF THE TURN ON, IF NO TRAFFIC STAGING IS IN PLACE OR WILL NOT BE STAGED ON THE DAY OF THE TURN ON.
- THE EXISTING SIGNAL HEADS NOT IN USE SHALL BE BAGGED AND DISABLED DURING TEMPORARY TRAFFIC SIGNAL OPERATIONS.
- IF TEMPORARY TRAFFIC SIGNALS ARE IN CONFLICT WITH THE PERMANENT TRAFFIC SIGNALS, THE MAST ARMS SHALL BE ROTATED OR REMOVED AND STORED OUTSIDE OF R.O.W. AND WILL BE THE CONTRACTOR'S RESPONSIBILITY TO KEEP THE EQUIPMENT SAFE. THIS IS INCLUDED IN THE COST OF THE TEMPORARY TRAFFIC SIGNAL INSTALLATION.

LEGEND

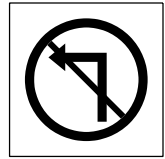
PORTLAND CEMENT CONCRETE PAVEMENT 12" (JOINTED)

TEMPORARY FIBER INTERCONNECT TO SKOKIE BLVD

TEMPORARY FIBER INTERCONNECT TO US RTE 41 NB RAMPS



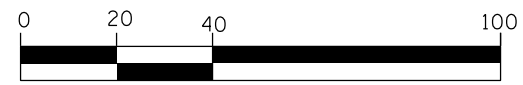
(A)
R10-5
(30"X36")
1 REQUIRED



(B)
R3-2
(36"X36")
1 REQUIRED



(C)
R10-11B
(36"X36")
R10-20AP
(24"X24")
2 REQUIRED



SCALE 1"=20'-0"



USER NAME = TMiller	DESIGNED - TGM	REVISED - 12/13/2019 TGM
PLOT SCALE = 40.0000' / in.	DRAWN - AB	REVISED -
PLOT DATE = 12/11/2019	CHECKED - JMT	REVISED -
	DATE - 09/20/2019	REVISED -

STATE OF ILLINOIS
DEPARTMENT OF TRANSPORTATION

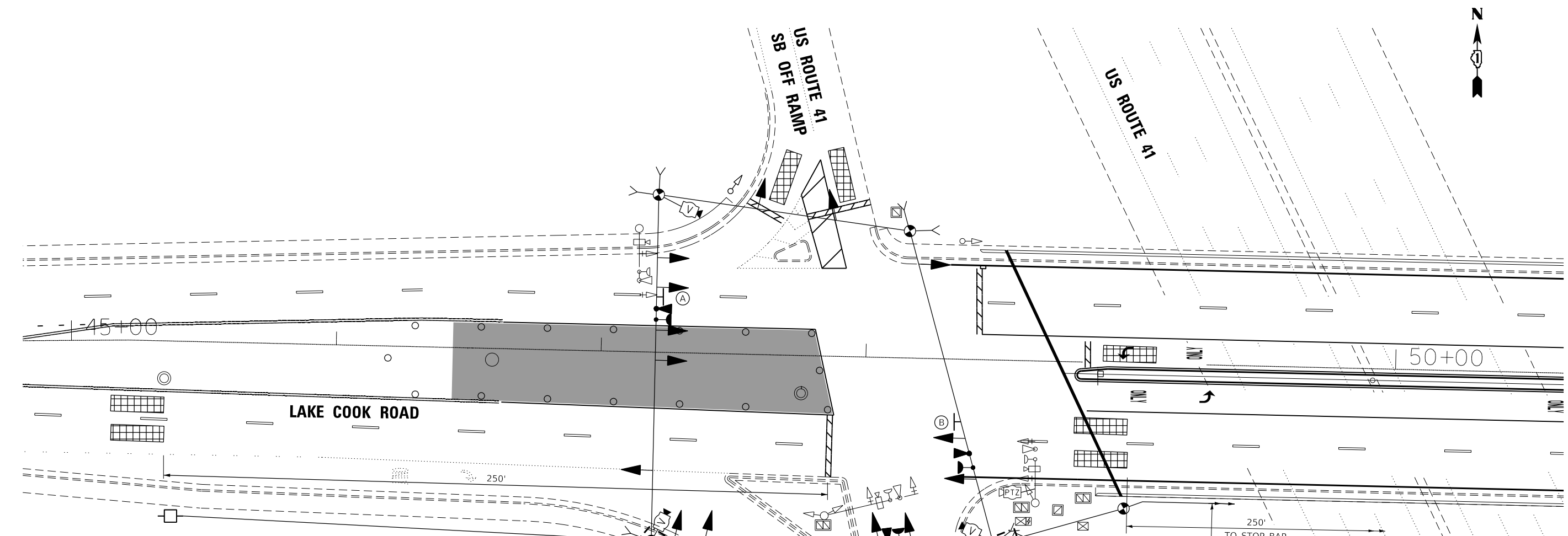
TEMPORARY TRAFFIC SIGNAL PLAN - STAGE III
LAKE COOK ROAD AT US 41 SB RAMPS

SCALE: SHEET TS-17 OF TS-23 SHEETS STA. TO STA.

F.A.P. RTE.	SECTION	COUNTY	TOTAL SHEETS	SHEET NO.
379	2010-120-I	COOK	88	45
CONTRACT NO. 60M68				

TS#1561

TS SHT NO. 18
 FILE NAME = D:\Engineering\Live\Projects\13024 IDOT DUR Chest\NO 15\CADD\CADD Sheets\Civil\106M68-sht-temp TS Plan_Lake Cook_WEST Stage 4.dgn



NOTES:

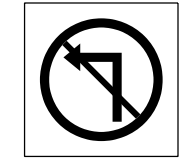
1. TEMPORARY FIBER INTERCONNECT IS INCLUDED IN TEMPORARY TRAFFIC SIGNAL INSTALLATION PAY ITEM.
2. THE TEMPORARY TRAFFIC SIGNAL SHALL HAVE THE SIGNAL HEAD DISPLAYS, SIGNAL HEAD PLACEMENT AND CONTROLLER PHASING MATCH THE EXISTING TRAFFIC SIGNAL, AT THE TIME OF THE TURN ON, IF NO TRAFFIC STAGING IS IN PLACE OR WILL NOT BE STAGED ON THE DAY OF THE TURN ON.
3. THE EXISTING SIGNAL HEADS NOT IN USE SHALL BE BAGGED AND DISABLED DURING TEMPORARY TRAFFIC SIGNAL OPERATIONS.
4. IF TEMPORARY TRAFFIC SIGNALS ARE IN CONFLICT WITH THE PERMANENT TRAFFIC SIGNALS, THE MAST ARMS SHALL BE ROTATED OR REMOVED AND STORED OUTSIDE OF R.O.W. AND WILL BE THE CONTRACTOR'S RESPONSIBILITY TO KEEP THE EQUIPMENT SAFE. THIS IS INCLUDED IN THE COST OF THE TEMPORARY TRAFFIC SIGNAL INSTALLATION.

LEGEND

PORTLAND CEMENT CONCRETE PAVEMENT 12" (JOINTED)



(A)
 R10-5
 (30"X36")
 1 REQUIRED



(B)
 R3-2
 (36"X36")
 1 REQUIRED

NO
TURN
ON RED

7 AM-9 AM
4 PM-6 PM
Mon-Fri

(C)
 R10-11B
 (36"X36")
 R10-20AP
 (24"X24")
 2 REQUIRED



SCALE 1"=20'-0"



USER NAME = TMiller	DESIGNED - TGM	REVISED - 12/13/2019 TGM
PLOT SCALE = 40.0000' / in.	DRAWN - AB	REVISED -
PLOT DATE = 12/11/2019	CHECKED - JMT	REVISED -
	DATE - 09/20/2019	REVISED -

**STATE OF ILLINOIS
 DEPARTMENT OF TRANSPORTATION**

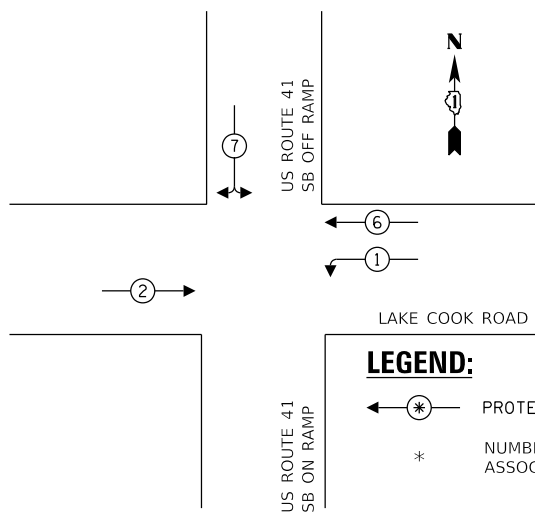
**TEMPORARY TRAFFIC SIGNAL PLAN - STAGE IV
 LAKE COOK ROAD AT US 41 SB RAMPS**

SCALE: SHEET TS-18 OF TS-23 SHEETS STA. TO STA.

F.A.P. RTE. 379	SECTION 2010-120-I	COUNTY COOK	TOTAL SHEETS 88	SHEET NO. 46
CONTRACT NO. 60M68				

TS#1561

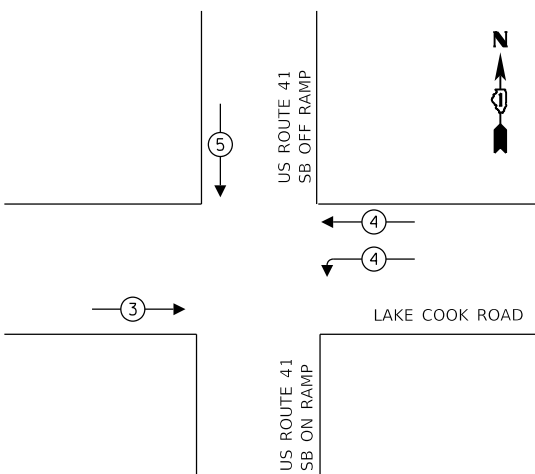
TEMPORARY CONTROLLER SEQUENCE



LEGEND:

- ← (*) PROTECTED PHASE
- * NUMBER REFERS TO ASSOCIATED PHASE

TEMPORARY EMERGENCY VEHICLE PREEMPTION SEQUENCE



TRAFFIC SIGNAL ELECTRICAL SERVICE REQUIREMENTS

TYPE	NO. OF LAMPS	LED WATTAGE	% OPERATION	TOTAL WATTAGE
SIGNAL (RED)	16	11	50	88.0
(YELLOW)	16	20	5	16.0
(GREEN)	16	12	45	86.4
PERMISSIVE ARROW	-	12	10	-
PED. SIGNAL	-	25	100	-
CONTROLLER	1	100	100	100.0
UPS	1	25	100	25.0
VIDEO SYSTEM	1	150	100	150.0
ILLUM. SIGN	-	35	5	-
FLASHER	-	25	50	-
STREET NAME SIGN	-	-	-	-
LUMINAIRE	-	-	-	-
TOTAL =				465.4

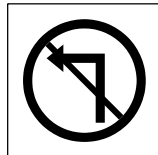
ENERGY COSTS TO:

ILLINOIS DEPARTMENT OF TRANSPORTATION
DIVISION OF HIGHWAYS / DISTRICT 1
201 W CENTER COURT, SCHAUMBURG, ILLINOIS 60196-1096

ENERGY SUPPLY: CONTACT: JEAN WILL
PHONE: (847) 816-5459
COMPANY: COMMONWEALTH EDISON
ACCOUNT NUMBER: ---



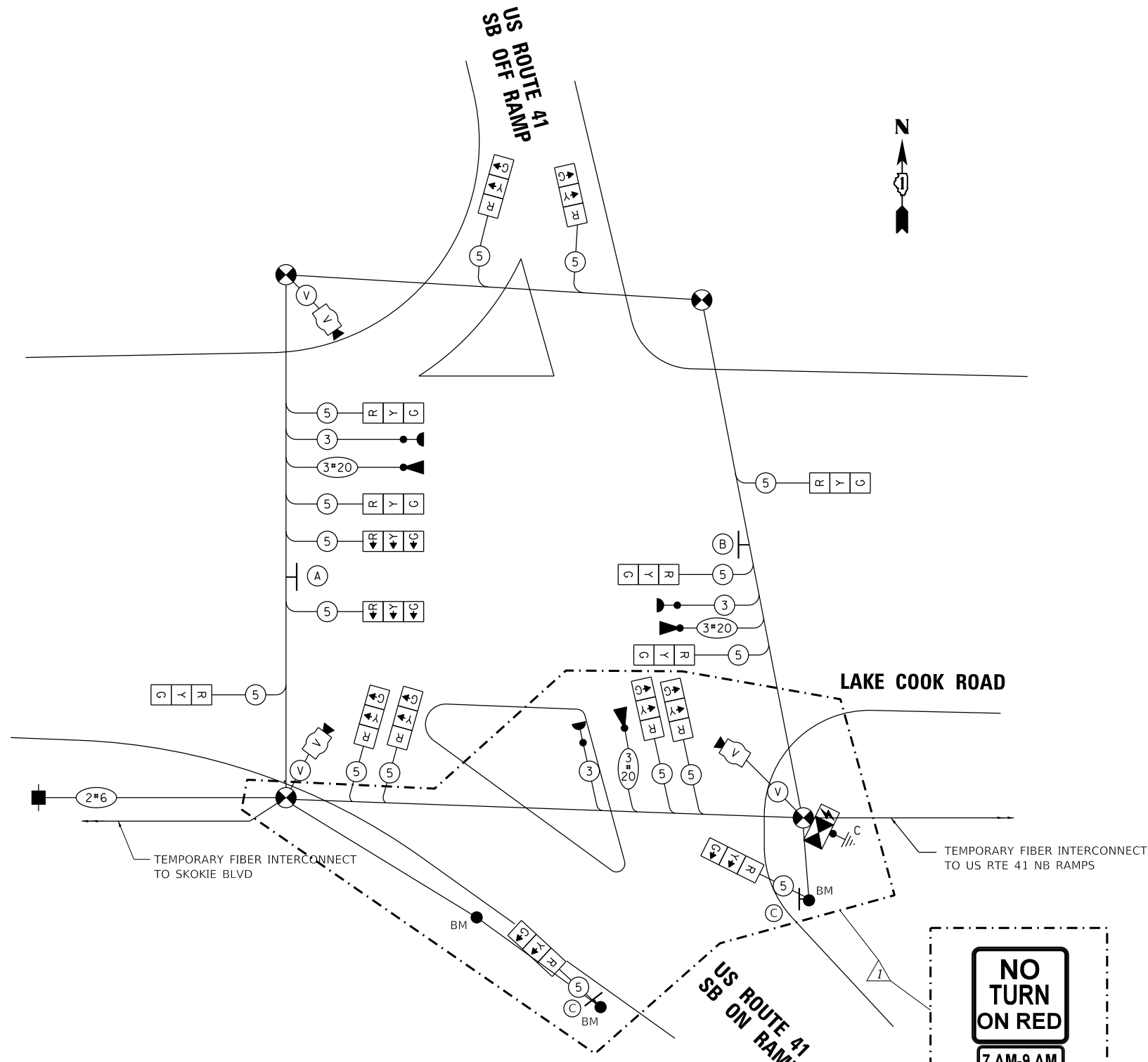
(A)
R10-5
(30"X36")
1 REQUIRED



(B)
R3-2
(36"X36")
1 REQUIRED

TEMPORARY CABLE PLAN

N.T.S.



7 AM-9 AM
4 PM-6 PM
Mon-Fri

(C)
R10-11B
(36"X36")
R10-20AP
(24"X24")
2 REQUIRED

NOTES:

1. TEMPORARY FIBER INTERCONNECT IS INCLUDED IN TEMPORARY TRAFFIC SIGNAL INSTALLATION PAY ITEM.
2. THE TEMPORARY TRAFFIC SIGNAL SHALL HAVE THE SIGNAL HEAD DISPLAYS, SIGNAL HEAD PLACEMENT AND CONTROLLER PHASING MATCH THE EXISTING TRAFFIC SIGNAL, AT THE TIME OF THE TURN ON, IF NO TRAFFIC STAGING IS IN PLACE OR WILL NOT BE STAGED ON THE DAY OF THE TURN ON.
3. THE EXISTING SIGNAL HEADS NOT IN USE SHALL BE BAGGED AND DISABLED DURING TEMPORARY TRAFFIC SIGNAL OPERATIONS.
4. IF TEMPORARY TRAFFIC SIGNALS ARE IN CONFLICT WITH THE PERMANENT TRAFFIC SIGNALS, THE MAST ARMS SHALL BE ROTATED OR REMOVED AND STORED OUTSIDE OF R.O.W. AND WILL BE THE CONTRACTOR'S RESPONSIBILITY TO KEEP THE EQUIPMENT SAFE. THIS IS INCLUDED IN THE COST OF THE TEMPORARY TRAFFIC SIGNAL INSTALLATION.

TS SHT NO. 19

FILE NAME = Q:\Engineering\Live\Projects\13024 IDOT DUR Chest\NO 15\CADD\CADD Sheets\Civil\1160M68-shr-Temp TS Cable Plan-Lake Cook_WEST.dgn



USER NAME = tmler	DESIGNED - TGM	REVISED - 12/13/2019 TGM
PLOT SCALE = 40.0000' / in.	DRAWN - AB	REVISED -
PLOT DATE = 12/11/2019	CHECKED - JMT	REVISED -
	DATE - 09/20/2019	REVISED -

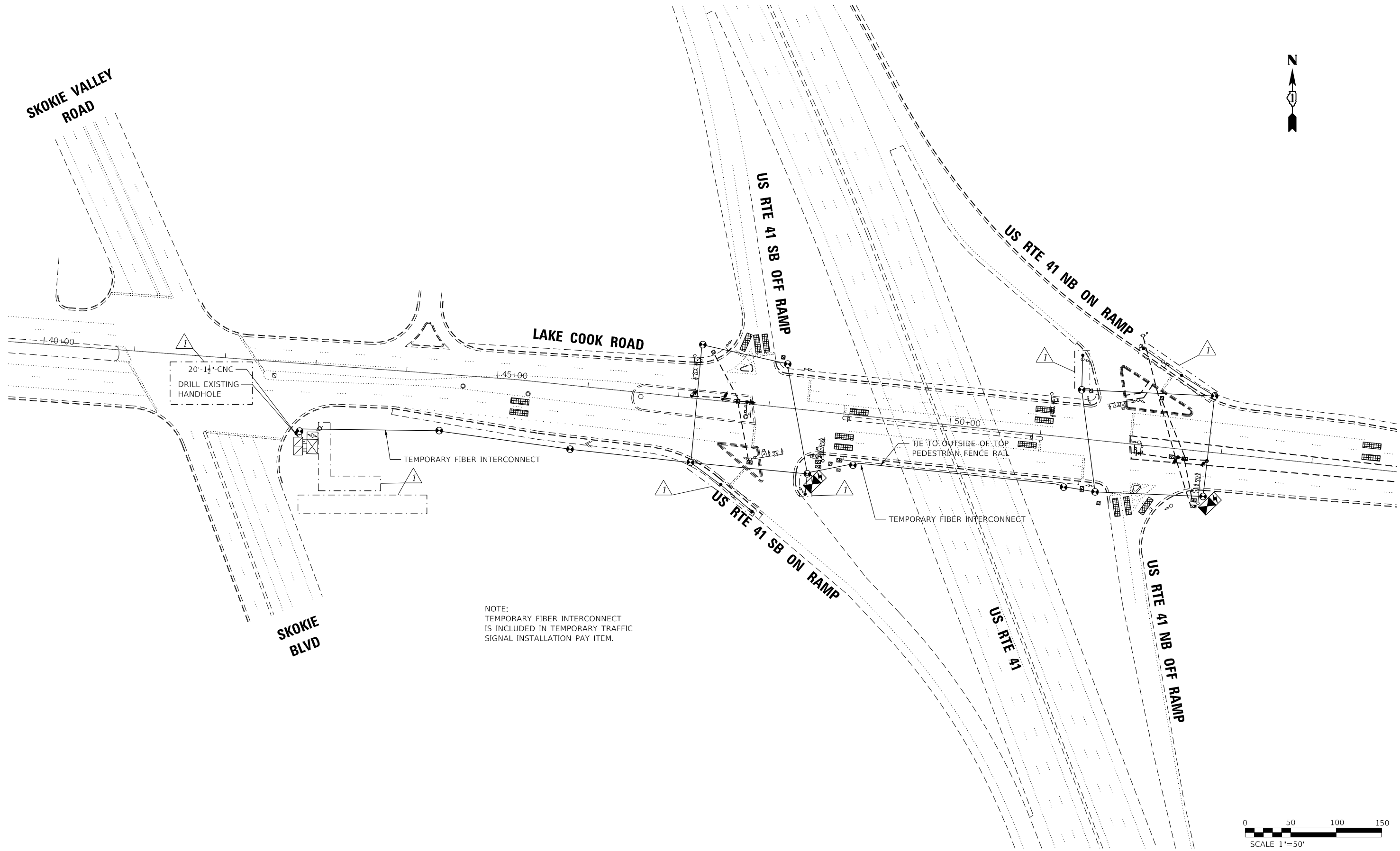
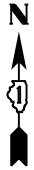
STATE OF ILLINOIS
DEPARTMENT OF TRANSPORTATION

TEMPORARY CABLE PLAN, TEMPORARY PHASE DESIGNATION DIAGRAM
AND TEMPORARY EMERGENCY VEHICLE PREEMPTION SEQUENCE
LAKE COOK ROAD AT US 41 SB RAMPS

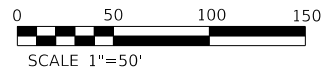
SCALE: SHEET TS-19 OF TS-23 SHEETS STA. TO STA.

F.A.P. RTE.	SECTION	COUNTY	TOTAL SHEETS	SHEET NO.
379	2010-120-I	COOK	88	47
CONTRACT NO. 60M68				
ILLINOIS FED. AID PROJECT				

TS#1561



NOTE:
 TEMPORARY FIBER INTERCONNECT
 IS INCLUDED IN TEMPORARY TRAFFIC
 SIGNAL INSTALLATION PAY ITEM.



TS SHT NO. 22

FILE NAME = Q:\Engineering\Live\Projects\13024 IDOT DUR Chest\NO 15\CADD\CADD Sheets\Civil\106068-shr-T-Interconnect Plan Lake Cook.dgn



USER NAME = TMiller	DESIGNED - TGM	REVISED - 12/13/2019 TGM
PLOT SCALE = 100.0000' / in.	DRAWN - JN	REVISED -
PLOT DATE = 12/13/2019	CHECKED - JMT	REVISED -
	DATE - 09/20/2019	REVISED -

STATE OF ILLINOIS
 DEPARTMENT OF TRANSPORTATION

TEMPORARY INTERCONNECT PLAN
 LAKE COOK ROAD AT US 41

SCALE: SHEET TS-15 OF TS-23 SHEETS STA. TO STA.

F.A.P. RTE.	SECTION	COUNTY	TOTAL SHEETS	SHEET NO.
379	2010-120-I	COOK	88	50
CONTRACT NO. 60M68				
ILLINOIS FED. AID PROJECT				