

STATE OF ILLINOIS
DEPARTMENT OF TRANSPORTATION

F.A.U. ROUTE	SECTION	COUNTY	TOTAL SHEETS	SHEET NO.
3524	120Y&86B)RS-1	COOK	87	3
ILLINOIS CONTRACT NO. 62G17				

FOR INDEX OF SHEETS, SEE SHEET NO. 2

THE IMPROVEMENT IS LOCATED IN THE CITIES OF PARK RIDGE AND DES PLAINES

TRAFFIC DATA

2018 ADT
NORTHWEST HIGHWAY = 11,800 - 15,000

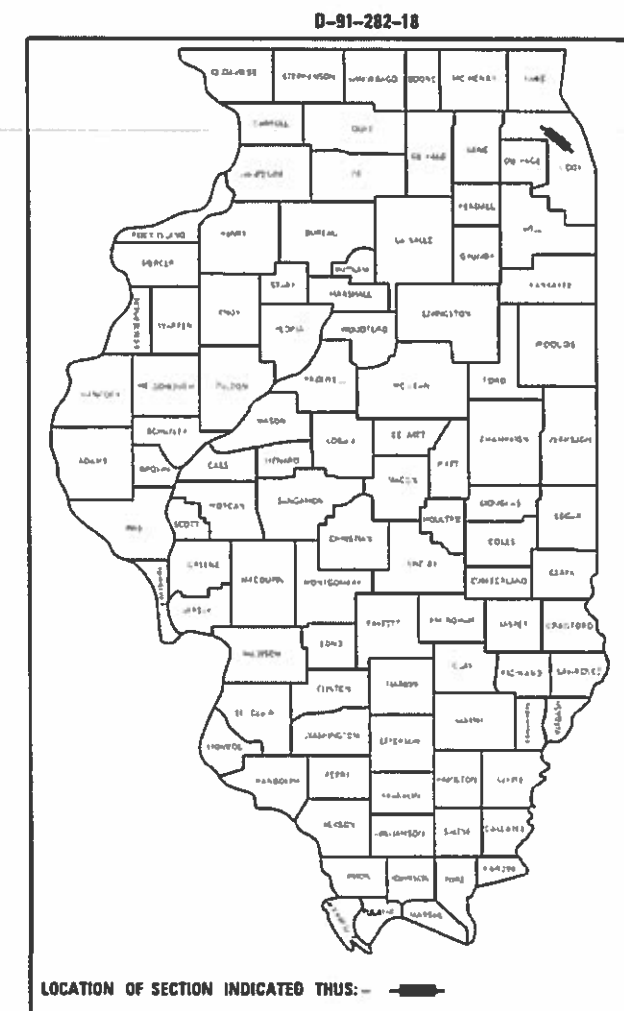
POSTED SPEED LIMIT

NORTHWEST HIGHWAY = 25 - 40 MPH

**PROPOSED
HIGHWAY PLANS**

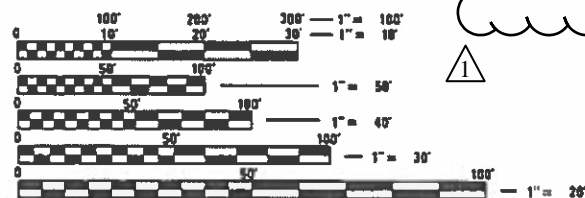
F.A.U ROUTE 3524: NORTHWEST HIGHWAY
FROM US 14 (MINER STREET) TO MERRILL STREET
SECTION: (120Y&86B)RS-1
PROJECT: STP-2S1A(443)
STANDARD OVERLAY /ADA IMPROVEMENTS
COOK COUNTY

C-91-180-18



IMPROVEMENT BEGINS
STA 4+43

OMISSION
STA 156+01 TO 167+69

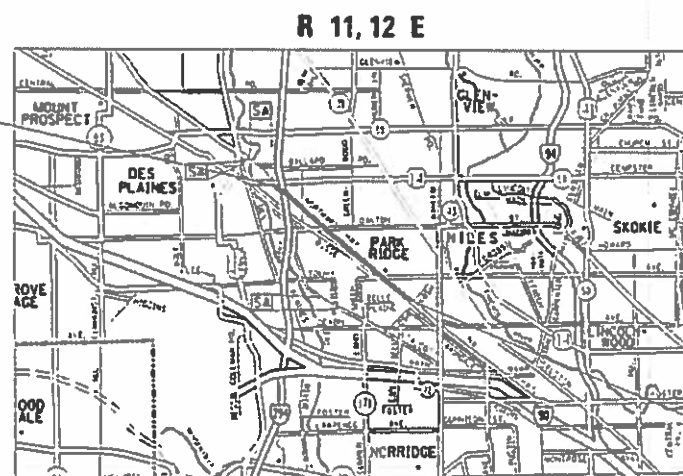


FULL SIZE PLANS HAVE BEEN PREPARED USING STANDARD ENGINEERING SCALES. REDUCED SIZED PLANS WILL NOT CONFORM TO STANDARD SCALES. IN MAKING MEASUREMENTS ON REDUCED PLANS, THE ABOVE SCALES MAY BE USED.

J.U.L.I.E.
JOINT UTILITY LOCATION INFORMATION FOR EXCAVATION
1-800-892-0123
OR 811

PROJECT ENGINEER: ALAIN MIDY (847) 221-3056
PROJECT MANAGER: FAWAD AQUEEL (847) 705-4247

CONTRACT NO. 62G17



IMPROVEMENT ENDS
STA 183+40

MAINE TOWNSHIP

GROSS LENGTH = 17,897 FT. = 3.39 MILES
~~NET LENGTH = 16,720 FT. = 3.17 MILES~~
NET LENGTH = 17,897 FT = 3.39 MILES

STATE OF ILLINOIS
DEPARTMENT OF TRANSPORTATION

SUBMITTED October 15, 2019

Anthony J. Dwyer
REGIONAL ENGINEER

Debra
ENGINEER OF DESIGN AND ENVIRONMENT

Paul P. Chaf
DIRECTOR OF HIGHWAYS PROJECT IMPLEMENTATION

PRINTED BY THE AUTHORITY
OF THE STATE OF ILLINOIS

SUMMARY OF QUANTITIES			CONSTRUCTION TYPE CODE					
CODE NO	ITEM	UNIT	URBAN TOTAL QUANTITIES	80% FED 20% STATE 0005	100% STATE 0005			
20100110	TREE REMOVAL (6 TO 15 UNITS DIAMETER)	UNIT	130	130				
20100210	TREE REMOVAL (OVER 15 UNITS DIAMETER)	UNIT	50	50				
20200100	EARTH EXCAVATION	CU YD	200	200				
21101615	TOPSOIL FURNISH AND PLACE, 4"	SO YD	1871	1871				
25200110	SODDING, SALT TOLERANT	SO YD	1979	1979				
25200200	SUPPLEMENTAL WATERING	UNIT	54	54				
35501308	HOT-MIX ASPHALT BASE COURSE, 6"	SO YD	47	47				
40600290	BITUMINOUS MATERIALS (TACK COAT)	POUND	68,213	68,213				
40600400	MIXTURE FOR CRACKS, JOINTS, AND FLANGEWAYS	TON	151	151				
40600982	HOT-MIX ASPHALT SURFACE REMOVAL - BUTT JOINT	SO YD	1071	1071				
40603200	POLYMERIZED HOT-MIX ASPHALT BINDER COURSE, IL-4.75, N50	TON	4,167	4,167				
40604060	HOT-MIX ASPHALT SURFACE COURSE, IL-9.5, MIX "D", N50	TON	5.5	5.5				
40604172	POLYMERIZED HOT-MIX ASPHALT SURFACE COURSE, IL-9.5, MIX "E", N70	TON	9,899	9,899				

SUMMARY OF QUANTITIES			CONSTRUCTION TYPE CODE					
CODE NO	ITEM	UNIT	URBAN TOTAL QUANTITIES	80% FED 20% STATE 0005	100% STATE 0005			
42001300	PROTECTIVE COAT	SO YD	5470	5470				
42300400	PORTLAND CEMENT CONCRETE DRIVEWAY PAVEMENT, 8 INCH	SO YD	280	280				
42400200	PORTLAND CEMENT CONCRETE SIDEWALK 5 INCH	SO FT	16100	16100				
42400800	DETECTABLE WARNINGS	SO FT	2020	2020				
44000159	HOT-MIX ASPHALT SURFACE REMOVAL, 2 1/2"	SO YD	100,000	100,000				
44000200	DRIVEWAY PAVEMENT REMOVAL	SO YD	327	327				
44000600	SIDEWALK REMOVAL	SO FT	16100	16100				
44003100	MEDIAN REMOVAL	SO FT	350	350				
44003510	MEDIAN REMOVAL PARTIAL DEPTH	SO FT	9770	9770				
44201789	CLASS D PATCHES, TYPE II, 12 INCH	SO YD	2520	2520				
44201794	CLASS D PATCHES, TYPE III, 12 INCH	SO YD	1050	1050				
44201796	CLASS D PATCHES, TYPE IV, 12 INCH	SO YD	2100	2100				
48102100	AGGREGATE WEDGE SHOULDER, TYPE B	TON	4	4				
60251730	CATCH BASINS TO BE ADJUSTED WITH NEW TYPE 23 FRAME AND GRATE	EACH	116	116				

FILE NAME =	USER NAME = senadecrad	DESIGNED -	REVISED -
pw:\planroom\dtd\illinois\p11001\Documents\DOT	Offices\District\Projects\DI28218\CADD\Design\DI28218-sh-	DRAWN -	REVISED -
	PLOT SCALE = 100,0000' / 1in	CHECKED -	REVISED -
	PLOT DATE = 10/16/2019	DATE -	REVISED -

**STATE OF ILLINOIS
DEPARTMENT OF TRANSPORTATION**

**NORTHWEST HIGHWAY FROM US14 (MINER ST) TO MERRILL ST.
SUMMARY OF QUANTITIES**

F.A.U. RTE. 3524	SECTION (120Y&86B)RS-1	COUNTY COOK	TOTAL SHEETS 87	SHEET NO. 3
CONTRACT NO. 62G17				
FED. ROAD DIST. NO. 1 ILLINOIS FED. AID PROJECT				

SUMMARY OF QUANTITIES			URBAN TOTAL QUANTITIES	CONSTRUCTION TYPE CODE				
CODE NO	ITEM	UNIT		80% FED 20% STATE 0005	100% STATE 0005			
60254330	CATCH BASINS TO BE RECONSTRUCTED WITH NEW TYPE 23 FRAME AND GRATE	EACH	16	16				
60257900	MANHOLES TO BE RECONSTRUCTED	EACH	20	20				
60261530	INLETS TO BE ADJUSTED WITH NEW TYPE 23 FRAME AND GRATE	EACH	30	30				
60262700	INLETS TO BE RECONSTRUCTED	EACH	8	8				
60264140	INLETS TO BE RECONSTRUCTED WITH NEW TYPE 24 FRAME AND GRATE	EACH	4	4				
60265700	VALVE VAULTS TO BE ADJUSTED	EACH	10	10				
60300105	FRAMES AND GRATES TO BE ADJUSTED	EACH	10	10				
60406000	FRAMES AND LIDS, TYPE 1, OPEN LID	EACH	30	30				
60406100	FRAMES AND LIDS, TYPE 1, CLOSED LID	EACH	40	40				
60618300	CONCRETE MEDIAN SURFACE, 4 INCH	SO FT	350	350				
* 66900200	NON-SPECIAL WASTE DISPOSAL	CU YD	200	200				
* 66900530	SOIL DISPOSAL ANALYSIS	EACH	4	4				
* 66901001	REGULATED SUBSTANCES PRE-CONSTRUCTION PLAN	LSUM	1	1				

SUMMARY OF QUANTITIES			URBAN TOTAL QUANTITIES	CONSTRUCTION TYPE CODE				
CODE NO	ITEM	UNIT		80% FED 20% STATE 0005	100% STATE 0005			
66901003	REGULATED SUBSTANCES FINAL CONSTRUCTION REPORT	LSUM	1	1				
66901006	REGULATED SUBSTANCES MONITORING	CAL DA	5	5				
67000400	ENGINEER'S FIELD OFFICE, TYPE A	CAL MO	12	12				
67100100	MOBILIZATION	L SUM	1	1				
70102620	TRAFFIC CONTROL AND PROTECTION, STANDARD 701501	L SUM	1	1				
70102622	TRAFFIC CONTROL AND PROTECTION, STANDARD 701502	L SUM	1	1				
70102625	TRAFFIC CONTROL AND PROTECTION, STANDARD 701606	L SUM	1	1				
70102632	TRAFFIC CONTROL AND PROTECTION, STANDARD 701602	L SUM	1	1				
70102635	TRAFFIC CONTROL AND PROTECTION, STANDARD 701701	L SUM	1	1				
70102640	TRAFFIC CONTROL AND PROTECTION, STANDARD 701801	L SUM	1	1				
70300100	SHORT TERM PAVEMENT MARKING	FOOT	63,372	63,372				
70300150	SHORT TERM PAVEMENT MARKING REMOVAL	SO FT	21,124	21,124				

63,372 63,372
 21,124 21,124



* - SPECIALTY ITEMS

SUMMARY OF QUANTITIES			CONSTRUCTION TYPE CODE			
CODE NO	ITEM	UNIT	URBAN TOTAL QUANTITIES	80% FED 20% STATE 0005	100% STATE 0005	
70300210	TEMPORARY PAVEMENT MARKING LETTERS AND SYMBOLS	SO FT	765	765		
70300220	TEMPORARY PAVEMENT MARKING - LINE 4"	FOOT	34,890	34,890		
70300240	TEMPORARY PAVEMENT MARKING - LINE 6"	FOOT	7,814	7,814		
70300250	TEMPORARY PAVEMENT MARKING - LINE 8"	FOOT	355	355		
70300260	TEMPORARY PAVEMENT MARKING - LINE 12"	FOOT	2,598	2,598		
70300280	TEMPORARY PAVEMENT MARKING - LINE 24"	FOOT	1,684	1,684		
70300520	PAVEMENT MARKING TAPE, TYPE III 4"	FOOT	15,587	15,587		
* 72400500	RELOCATE SIGN PANEL ASSEMBLY - TYPE A	EACH	1	1		
* 78000100	THERMOPLASTIC PAVEMENT MARKING - LETTERS AND SYMBOLS	SO FT	765	765		
* 78000200	THERMOPLASTIC PAVEMENT MARKING - LINE 4"	FOOT	34,890	34,890		
* 78000400	THERMOPLASTIC PAVEMENT MARKING - LINE 6"	FOOT	7,814	7,814		
* 78000500	THERMOPLASTIC PAVEMENT MARKING - LINE 8"	FOOT	355	355		
* 78000600	THERMOPLASTIC PAVEMENT MARKING - LINE 12"	FOOT	2,598	2,598		

SUMMARY OF QUANTITIES			CONSTRUCTION TYPE CODE			
CODE NO	ITEM	UNIT	URBAN TOTAL QUANTITIES	80% FED 20% STATE 0005	100% STATE 0005	
* 78000650	THERMOPLASTIC PAVEMENT MARKING - LINE 24"	FOOT	1,684	1,684		
* 78100100	RAISED REFLECTIVE PAVEMENT MARKER	EACH	1,101	1,101		
78300200	RAISED REFLECTIVE PAVEMENT MARKER REMOVAL	EACH	1,101	1,101		
* 85000200	MAINTENANCE OF EXISTING TRAFFIC SIGNAL INSTALLATION	EACH	5	5		
* 88600600	DETECTOR LOOP REPLACEMENT	FOOT	3,312	3,312		
* 89500400	RELOCATE EXISTING PEDESTRIAN PUSH-BUTTON	EACH	13	13		
* 89502376	REBUILD EXISTING HANDHOLE	EACH	15	15		
X0320050	CONSTRUCTION LAYOUT (SPECIAL)	L SUM	1	1		
X0327611	REMOVE AND REINSTALL BRICK PAVER	SO FT	4019	4019		
X2020110	GRADING AND SHAPING SHOULDERS	UNIT	3	3		
X5537800	STORM SEWERS TO BE CLEANED 12"	FOOT	750		750	
X6030310	FRAMES AND LIDS TO BE ADJUSTED (SPECIAL)	EACH	260	260		
X7030005	TEMPORARY PAVEMENT MARKING REMOVAL	SO FT	26514	26514		
Z0004562	COMBINATION CONCRETE CURB AND GUTTER REMOVAL AND REPLACEMENT	FOOT	10661	10661		

FILE NAME =	USER NAME = senodeerad	DESIGNED -	REVISED -
dw:\planroom\dtd\111\mof.gov\PI\DOT\Documents\MDOT	Offices\District\Projects\DI28218\CAD\Drawings\Design\DI28218-sh	DRAWN -	REVISED -
	PLOT SCALE = 100,0000' / 1in	CHECKED -	REVISED -
	PLOT DATE = 10/18/2019	DATE -	REVISED -

**STATE OF ILLINOIS
DEPARTMENT OF TRANSPORTATION**

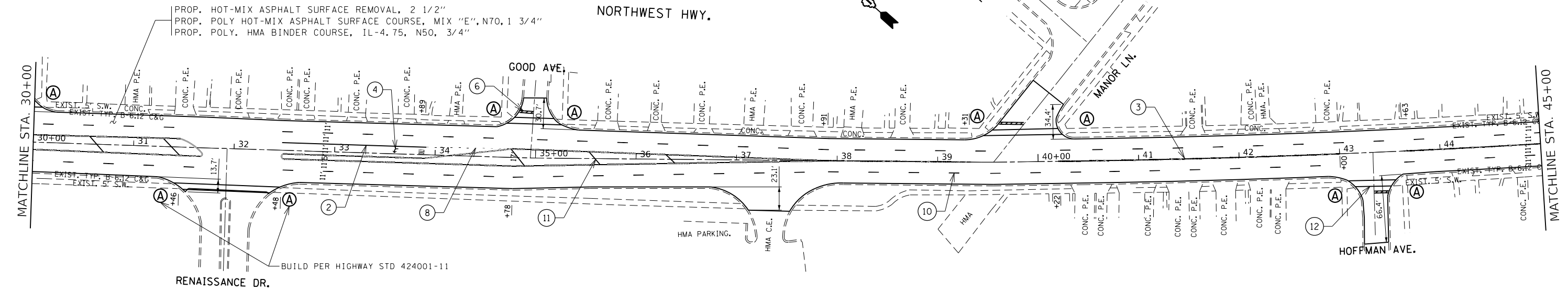
**NORTHWEST HIGHWAY FROM US14 (MINER ST) TO MERRILL ST.
SUMMARY OF QUANTITIES**

F.A.U. RTE. 3524	SECTION (120Y&86B)RS-1	COUNTY COOK	TOTAL SHEETS 87	SHEET NO. 5
FED. ROAD DIST. NO. 1 ILLINOIS FED. AID PROJECT			CONTRACT NO. 62017	

SCALE: SHEET NO. 3 OF 4 SHEETS STA. TO STA.

ROADWAY LEGEND

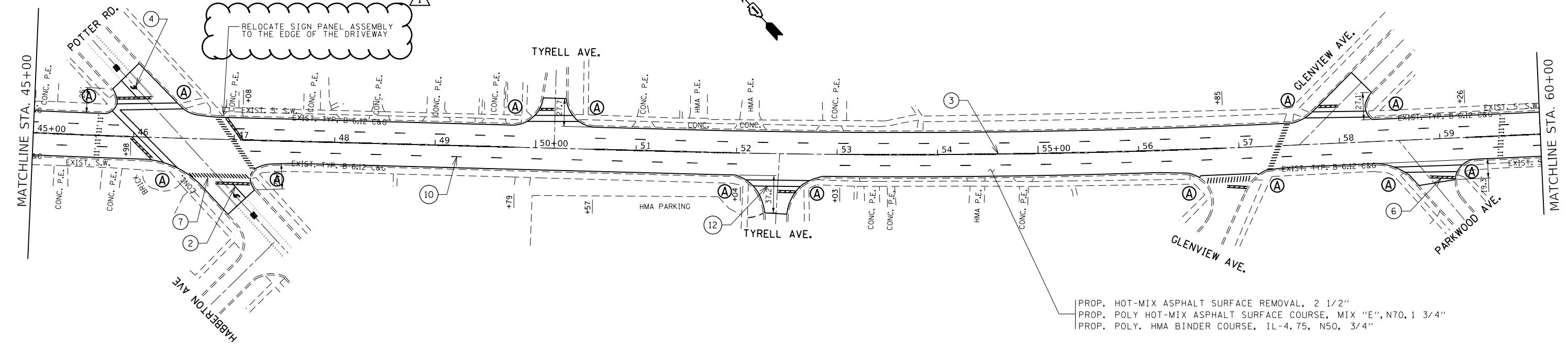
- (A) PROP. SIDEWALK REMOVAL
PROP. PCC SIDEWALK, 5"
PROP. DETECTABLE WARNINGS
- SELECTIVE CLEARING & TREE REMOVAL
- MEDIAN REMOVAL
PARTIAL DEPTH



- | | | |
|---|---|--|
| <ul style="list-style-type: none"> ① PROP. THERMOPLASTIC PVMT MARKING 4", 10' DASH 30' SKIP, YELLOW (TYP.) ② PROP. THERMOPLASTIC PVMT MARKING 6", TURN LANE, WHITE (TYP.) ③ PROP. THERMOPLASTIC PVMT MARKING 4", DOUBLE YELLOW @ 11" C-C (TYP.) ④ PROP. THERMOPLASTIC PVMT, MARKING LETTERS AND SYMBOLS, WHITE (TYP.) | <ul style="list-style-type: none"> ⑤ PROP. THERMOPLASTIC PVMT MARKING 4", SHOULDER LANE, WHITE (TYP.) ⑥ PROP. THERMOPLASTIC PVMT MARKING LINE, 24" STOPBAR, WHITE (TYP.) ⑦ PROP. THERMO. PAVEMENT MARKING LINE, 12" CROSSWALK, WHITE (TYP.) ⑧ PROP. THERMOPLASTIC PVMT, MARKING 6", 2' DASH 6' SKIP, WHITE (TYP.) | <ul style="list-style-type: none"> ⑨ PROP. THERMOPLASTIC PVMT MARKING 8", EDGE LINE, WHITE (TYP.) ⑩ PROP. THERMOPLASTIC PVMT MARKING 4", 10' DASH 30' SKIP, WHITE (TYP.) ⑪ PROP. THERMOPLASTIC PVMT, MARKING 12" DIAGONALS @ 45° (TYP.) ⑫ PROP. THERMO. PAVEMENT MARKING LINE, 6" CROSSWALK, 6' C-C WHITE (TYP.) |
|---|---|--|

ROADWAY LEGEND

- (A) PROP. SIDEWALK REMOVAL
PROP. PCC SIDEWALK, 5"
PROP. DETECTABLE WARNINGS
- MEDIAN REMOVAL
PARTIAL DEPTH
- SELECTIVE CLEARING & TREE REMOVAL



PROP. HOT-MIX ASPHALT SURFACE REMOVAL, 2 1/2"
PROP. POLY HOT-MIX ASPHALT SURFACE COURSE, MIX "E", N70, 1 3/4"
PROP. POLY. HMA BINDER COURSE, IL-4.75, N50, 3/4"

MODEL: Default
FILE: \\nrcs-pw\pub\baron.com.dta\illinois.gov\PW\DOT\Documents\DOT_Offices\District_1\Projects\2128218\CaddData\Design\1218218-sh-rt-bar.dgn

USER NAME = senadeeraai	DESIGNED -	REVISED -
	DRAWN -	REVISED -
PLOT SCALE = 100.0000' / in.	CHECKED -	REVISED -
PLOT DATE = 12/19/2019	DATE -	REVISED -

STATE OF ILLINOIS
DEPARTMENT OF TRANSPORTATION

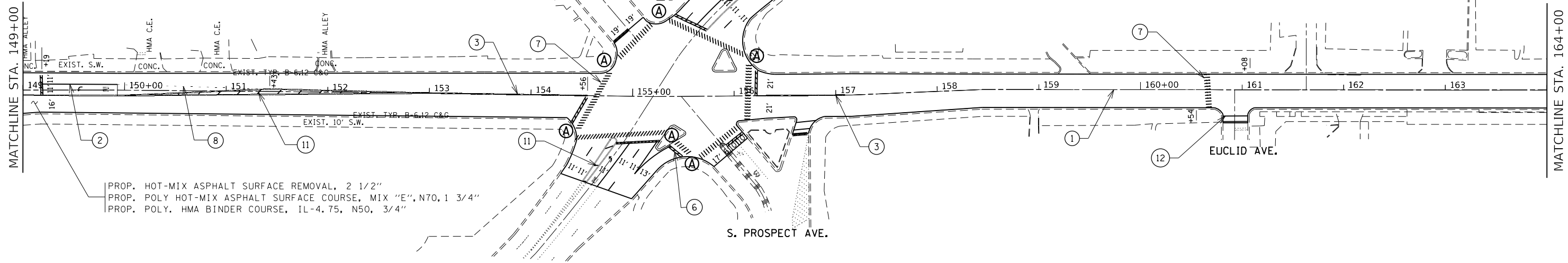
ROADWAY PLAN NORTHWEST HIGHWAY
FROM (U.S. RTE. 14) MINER ST TO MERRILL ST.

SCALE: 1"=50' SHEET OF SHEETS STA. 30+00 TO STA. 60+00

F.A.U. RTE.	SECTION	COUNTY	TOTAL SHEETS	SHEET NO.
3524	(120Y&86B)RS-1	COOK	87	10
CONTRACT NO. 62G17				
ILLINOIS FED. AID PROJECT				

ROADWAY LEGEND

- (A) PROP. SIDEWALK REMOVAL
PROP. PCC SIDEWALK, 5"
PROP. DETECTABLE WARNINGS
- SELECTIVE CLEARING & TREE REMOVAL
- MEDIAN REMOVAL
PARTIAL DEPTH

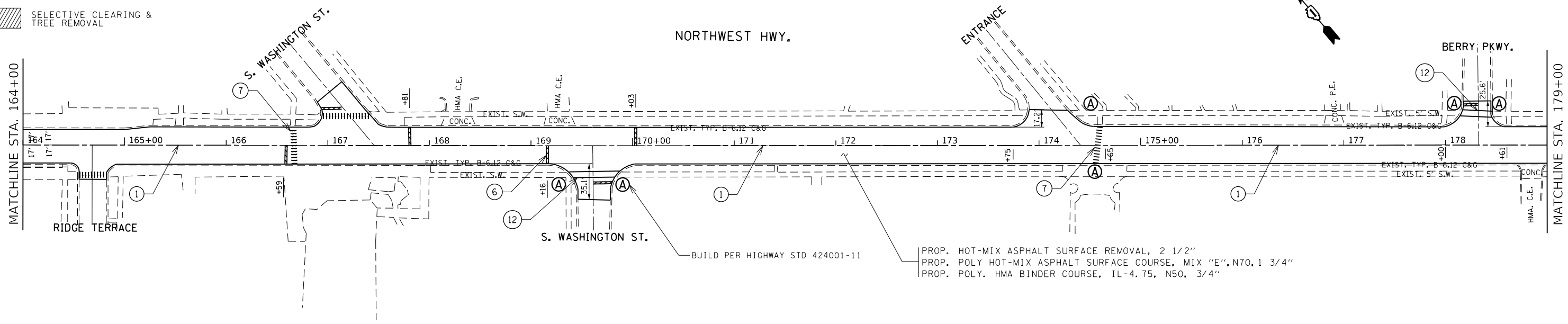


PROP. HOT-MIX ASPHALT SURFACE REMOVAL, 2 1/2"
PROP. POLY HOT-MIX ASPHALT SURFACE COURSE, MIX "E", N70, 1 3/4"
PROP. POLY. HMA BINDER COURSE, IL-4.75, N50, 3/4"

- | | | |
|--|---|--|
| (1) PROP. THERMOPLASTIC PVMT MARKING 4",
10' DASH 30' SKIP, YELLOW (TYP.) | (5) PROP. THERMOPLASTIC PVMT MARKING 4",
SHOULDER LANE, WHITE (TYP.) | (9) PROP. THERMOPLASTIC PVMT MARKING 8",
EDGE LINE, WHITE (TYP.) |
| (2) PROP. THERMOPLASTIC PVMT MARKING 6",
TURN LANE, WHITE (TYP.) | (6) PROP. THERMOPLASTIC PVMT MARKING LINE, 24"
STOPBAR, WHITE (TYP.) | (10) PROP. THERMOPLASTIC PVMT MARKING 4",
10' DASH 30' SKIP, WHITE (TYP.) |
| (3) PROP. THERMOPLASTIC PVMT MARKING 4",
DOUBLE YELLOW @ 11" C-C (TYP.) | (7) PROP. THERMO. PAVEMENT MARKING LINE, 12"
CROSSWALK, WHITE (TYP.) | (11) PROP. THERMOPLASTIC PVMT. MARKING 12"
DIAGONALS @ 45° (TYP.) |
| (4) PROP. THERMOPLASTIC PVMT. MARKING
LETTERS AND SYMBOLS, WHITE (TYP.) | (8) PROP. THERMOPLASTIC PVMT MARKING 6",
2' DASH 6' SKIP, WHITE (TYP.) | (12) PROP. THERMO. PAVEMENT MARKING LINE, 6"
CROSSWALK, 6' C-C WHITE (TYP.) |

ROADWAY LEGEND

- (A) PROP. SIDEWALK REMOVAL
PROP. PCC SIDEWALK, 5"
PROP. DETECTABLE WARNINGS
- MEDIAN REMOVAL
PARTIAL DEPTH
- SELECTIVE CLEARING & TREE REMOVAL



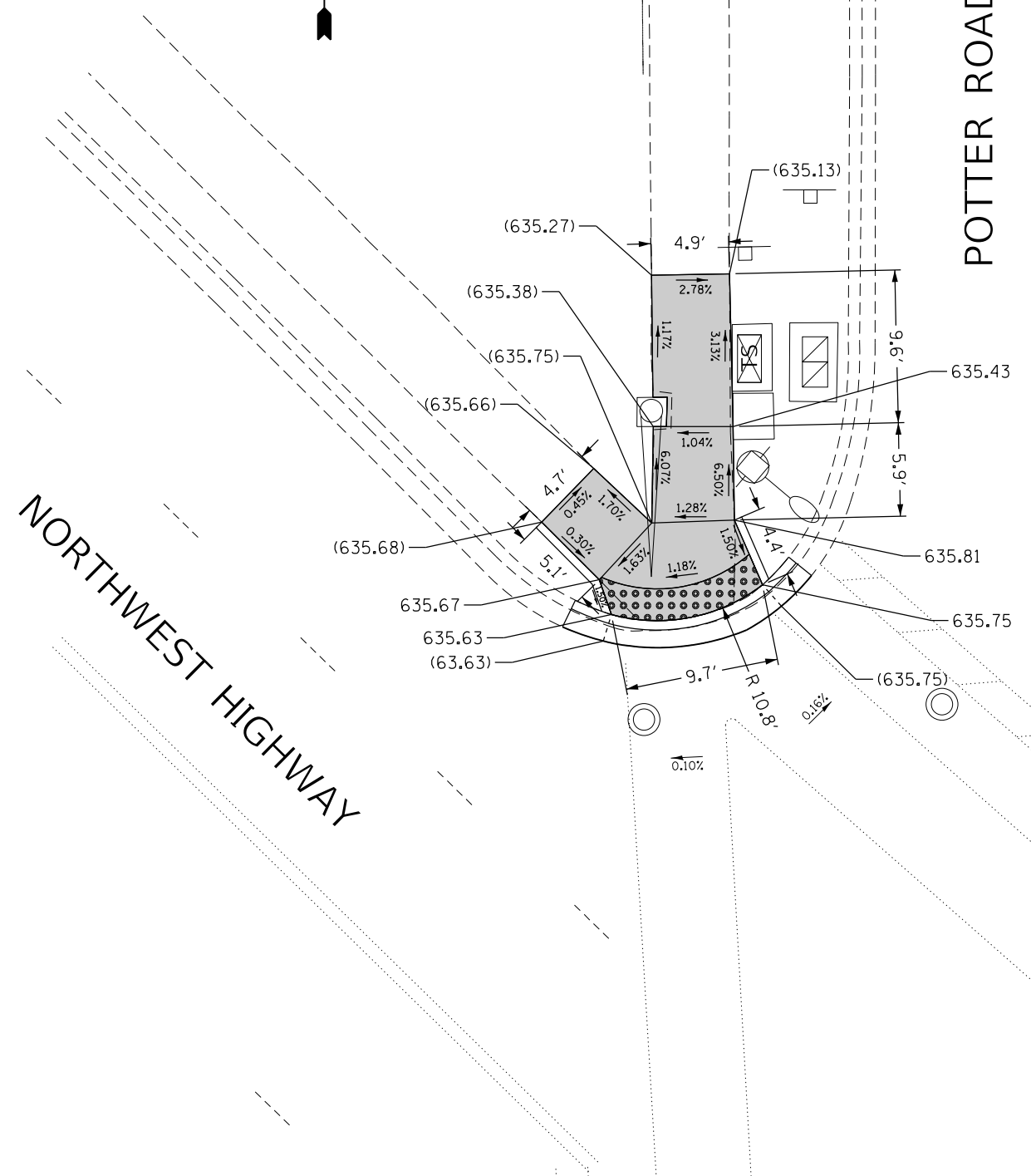
BUILD PER HIGHWAY STD 424001-11
PROP. HOT-MIX ASPHALT SURFACE REMOVAL, 2 1/2"
PROP. POLY HOT-MIX ASPHALT SURFACE COURSE, MIX "E", N70, 1 3/4"
PROP. POLY. HMA BINDER COURSE, IL-4.75, N50, 3/4"

USER NAME = senadeeraai	DESIGNED -	REVISED -
	DRAWN -	REVISED -
PLOT SCALE = 100,0000' / in.	CHECKED -	REVISED -
PLOT DATE = 12/26/2019	DATE -	REVISED -

STATE OF ILLINOIS
DEPARTMENT OF TRANSPORTATION

ROADWAY PLAN NORTHWEST HIGHWAY
FROM (U.S. RTE. 14) MINER ST TO MERRILL ST.
SCALE: 1"=50'
SHEET OF SHEETS STA. 149+00 TO STA. 179+00

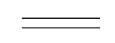
F.A.U. RTE.	SECTION	COUNTY	TOTAL SHEETS	SHEET NO.
3524	(120Y&86B)RS-1	COOK	87	14
CONTRACT NO. 62G17				
ILLINOIS FED. AID PROJECT				



LEGEND



EXISTING LENGTH



PROPOSED SIDE CURB



EXISTING ELEVATION/SLOPE



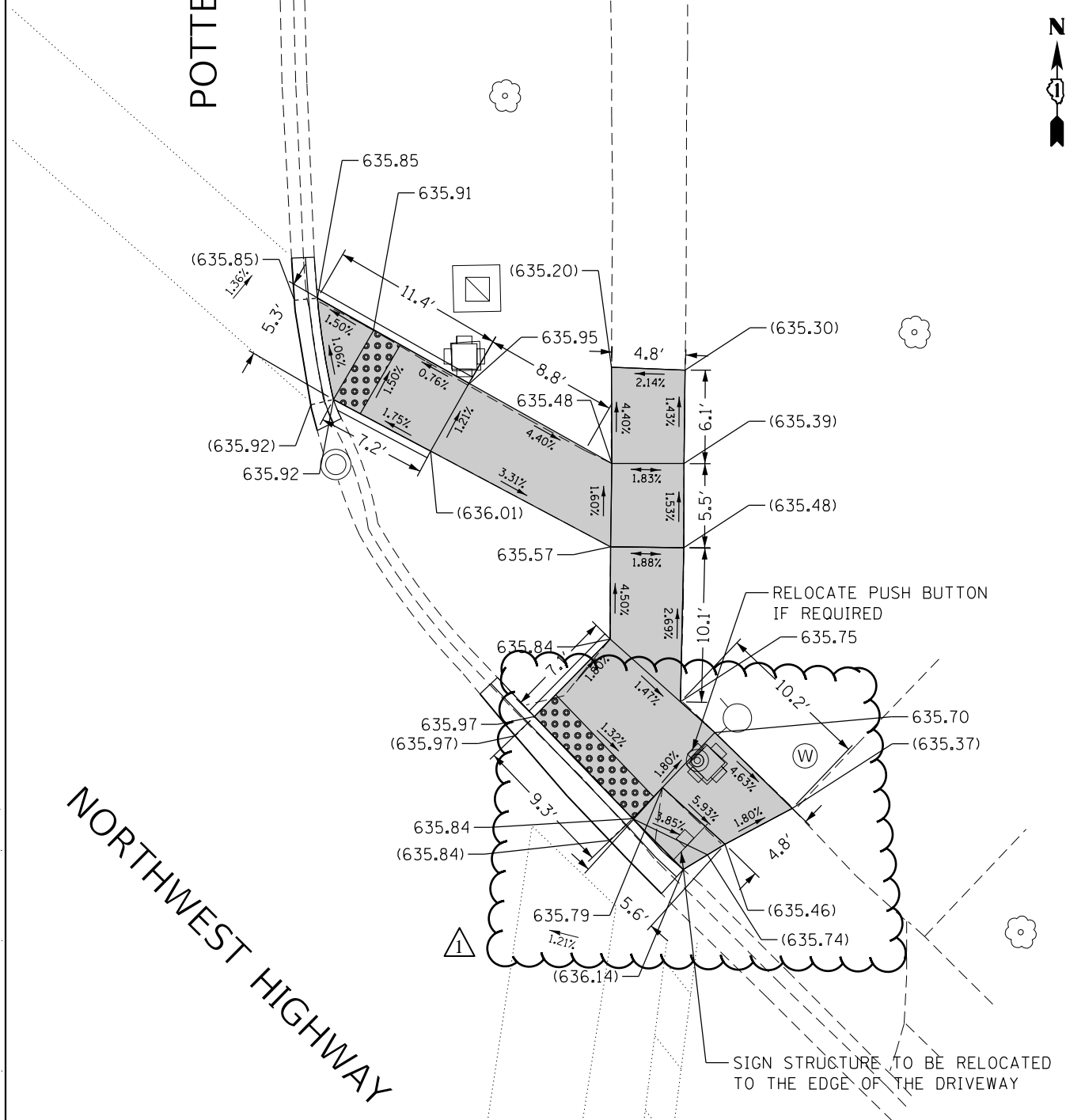
PROPOSED SIDEWALK



DETECTABLE WARNINGS



SIDEWALK REMOVAL
REPLACE W/TOPSOIL & SOD



REFERENCE BENCHMARK ELEV 635.717 FT

BENCHMARK : BM #3575 CROSS CUT AT THE NW CORNER OF HANDHOLE CONC. PAD

LOCATION : AT NORTHWEST CORNER OF NORTHWEST HWY. AND POTTER RD

REFERENCE BENCHMARK ELEV 635.717 FT

BENCHMARK : BM #3575 CROSS CUT AT THE NW CORNER OF HANDHOLE CONC. PAD

LOCATION : AT NORTHWEST CORNER OF NORTHWEST HWY. AND POTTER RD

USER NAME = senadeeraai	DESIGNED -	REVISED -
DRAWN -	REVISOR -	DATE -
PLOT SCALE = 10.0000 ' / in.	CHECKED -	REVISED -
PLOT DATE = 12/19/2019	DATE -	REVISED -

STATE OF ILLINOIS
DEPARTMENT OF TRANSPORTATION

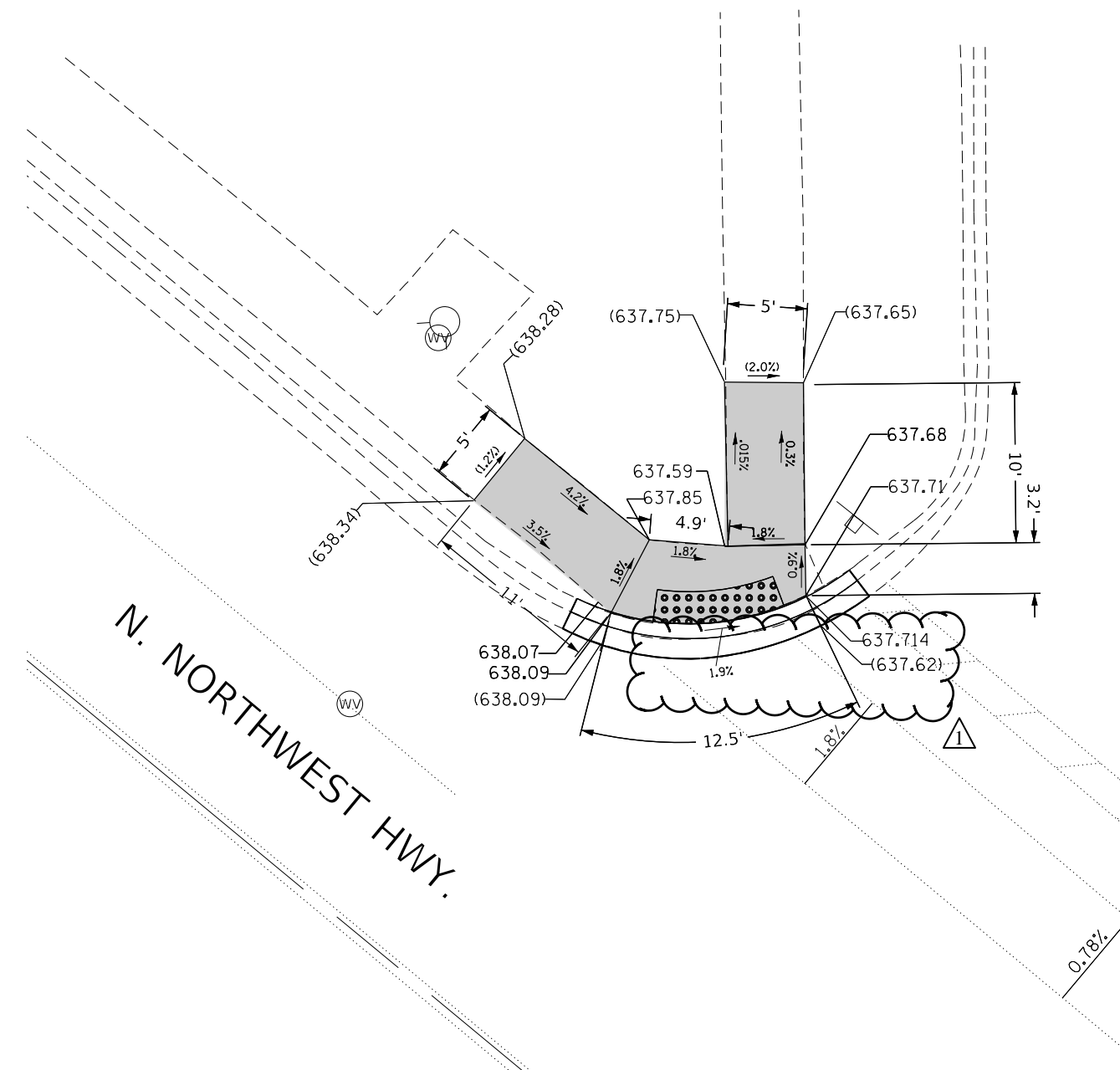
NORTHWEST HWY AT POTTER RD
ADA CURB RAMP DETAILS (NE & NW CORNER)

SCALE: 1"=5'

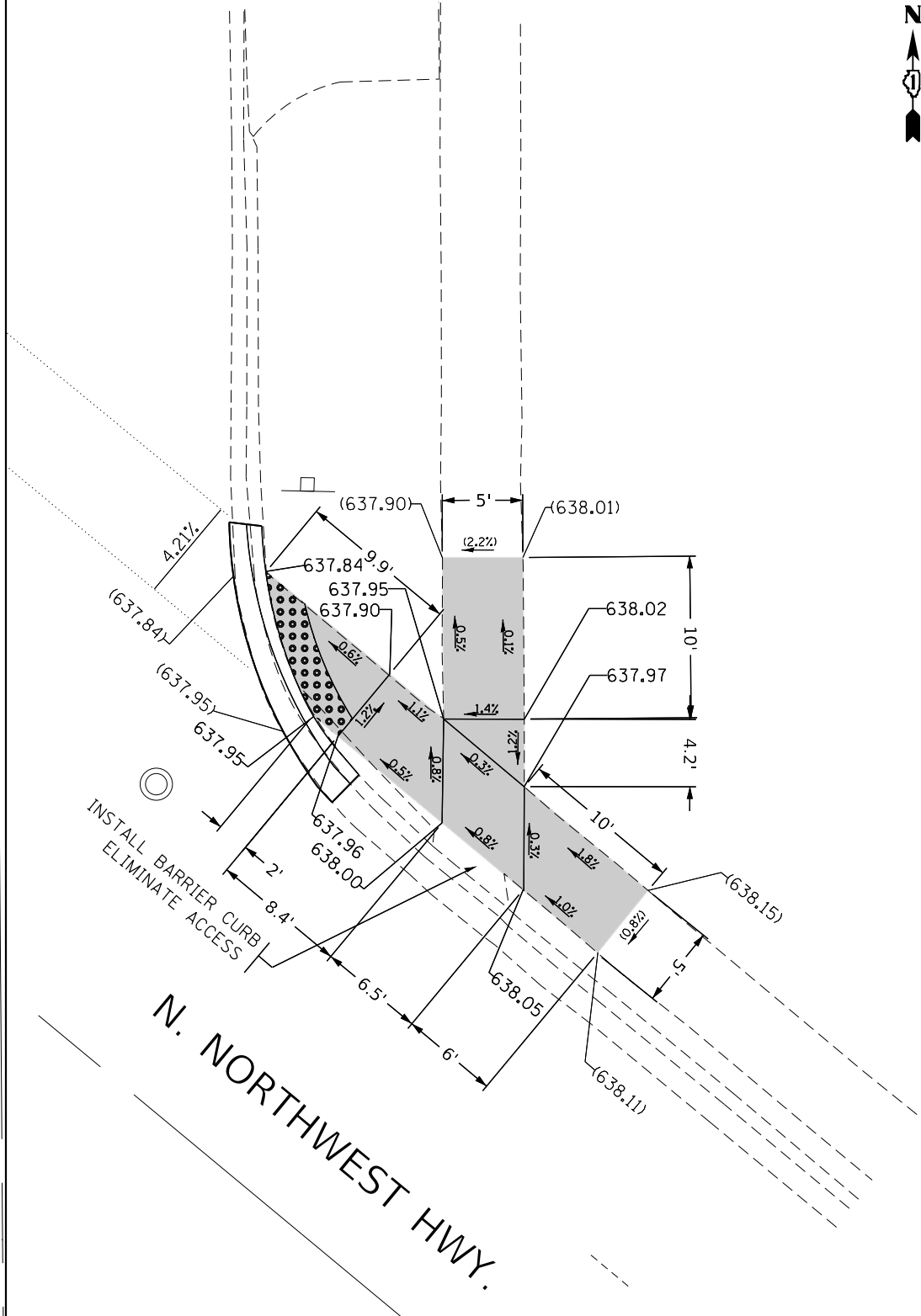
SHEET OF SHEETS STA. TO STA.

F.A.U. RTE.	SECTION	COUNTY	TOTAL SHEETS	SHEET NO.
3524	(120Y&86B)RS-1	COOK	87	20
CONTRACT NO. 62G17				

MODEL: Default
FILE: \\blm1c03.plm.com\data\blm\csc\p\11001\Drawings\DOT\Office\Drawings\1\Projects\128218\CADD\data\Design\128218_rht-ADA-West.dgn



N. WESTERN AVENUE



N. NORTHWEST HWY.

LEGEND

- xx.xx' EXISTING LENGTH
- == PROPOSED SIDE CURB
- () EXISTING ELEVATION/SLOPE
- PROPOSED SIDEWALK
- DETECTABLE WARNINGS
- ▨ SIDEWALK REMOVAL REPLACE W/TOPSOIL & SOD

REFERENCE BENCHMARK ELEV 640.11

BENCHMARK : BM #15 SE FLANGE BOLT ON HYDRANT

LOCATION : AT NORTH WEST CORNER OF NORTHWEST HWY. AND MERRILL WESTERN AVE

MODEL: Default
 FILE: \\blm1c01.pva\pub\arcom.dwg\illinois\pva\pwwd\DOT\Documents\DOT - Offices\District 1\Projects\128218\CADD\Drawings\128218-01-ADA-Exc.dwg

USER NAME = senadeeraai	DESIGNED -	REVISED -
	DRAWN -	REVISED -
PLOT SCALE = 10.0000' / in.	CHECKED -	REVISED -
PLOT DATE = 12/19/2019	DATE -	REVISED -

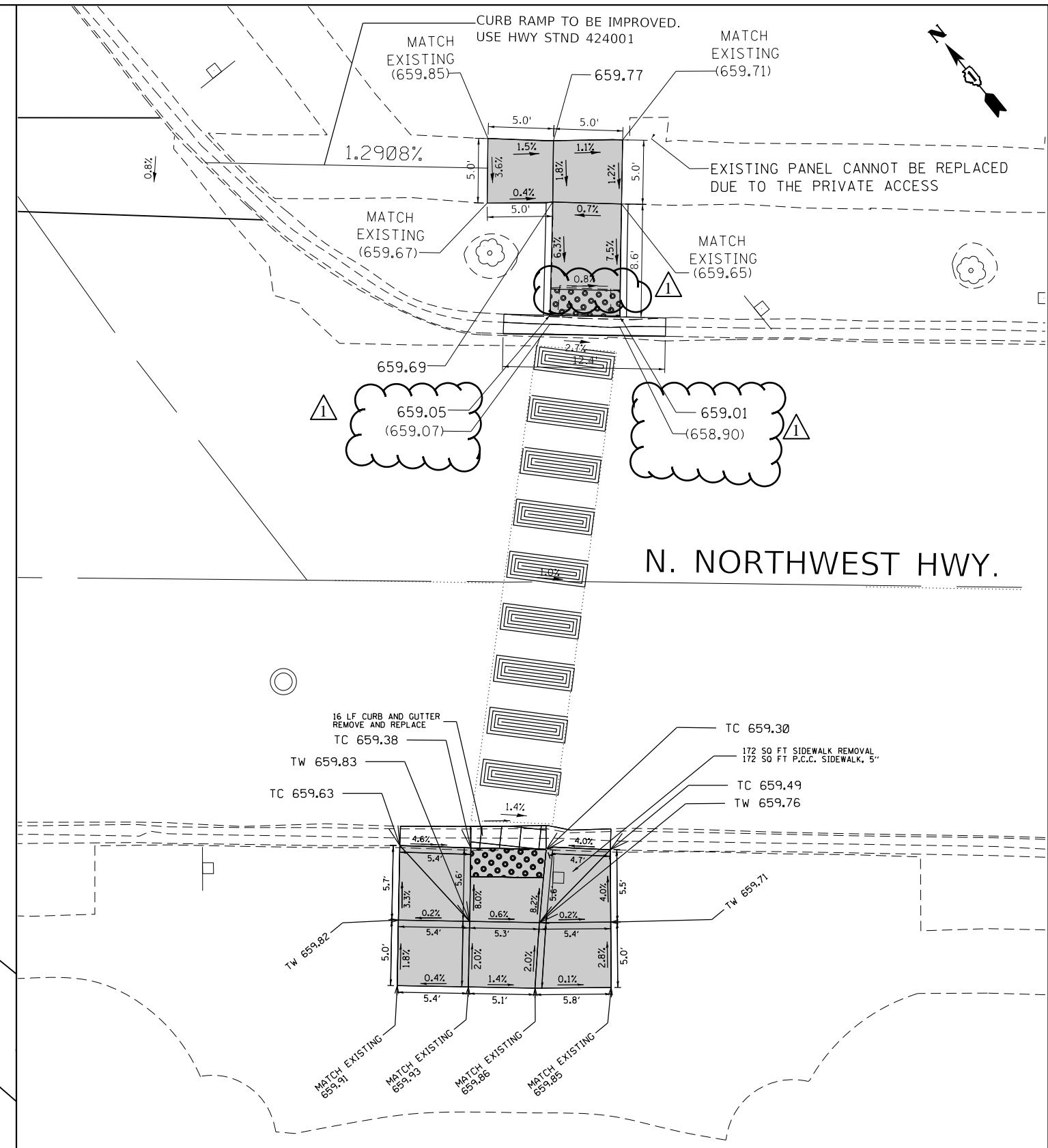
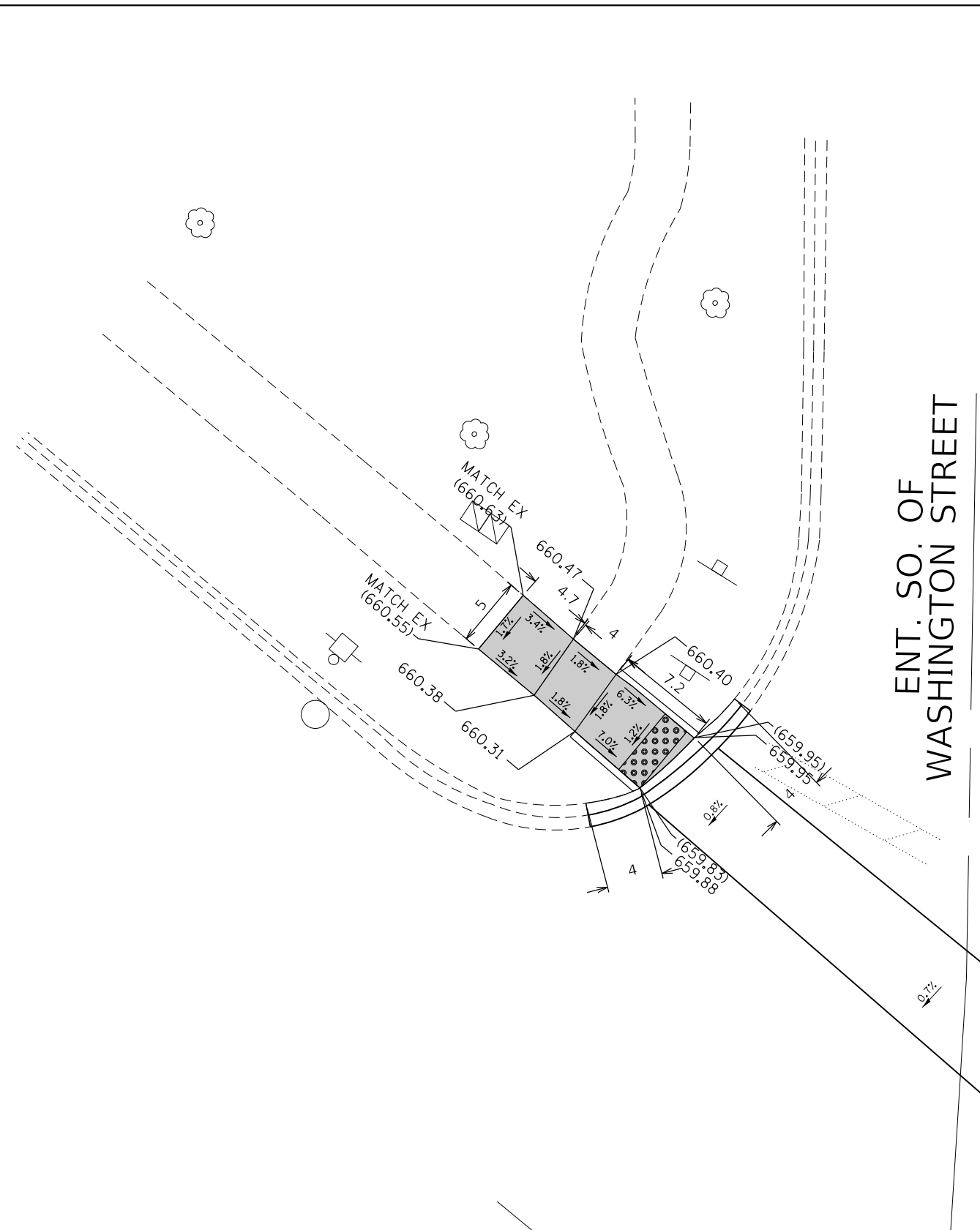
**STATE OF ILLINOIS
DEPARTMENT OF TRANSPORTATION**

**NORTHWEST HWY AT N. WESTERN AVE
ADA CURB RAMP DETAILS (NE & NW CORNER)**

SCALE: 1"=5' SHEET OF SHEETS STA. TO STA.

F.A.U. RTE.	SECTION	COUNTY	TOTAL SHEETS	SHEET NO.
3524	(120Y&86B)RS-1	COOK	87	44
CONTRACT NO. 62G17				
ILLINOIS FED. AID PROJECT				

MODEL: Default
 FILE: \\nrcs-pub\pub\arcom\dat\illinois\pwr\DOT\Documents\DOT - Offices\Dir\et - J\Projects\128218\CADD\Drawings\128218-ent-ADA-Exc.dwg



LEGEND	
xx.xx'	EXISTING LENGTH
==	PROPOSED SIDE CURB
()	EXISTING ELEVATION/SLOPE
[Solid Grey Box]	PROPOSED SIDEWALK
[Dotted Box]	DETECTABLE WARNINGS
[Cross-hatched Box]	SIDEWALK REMOVAL REPLACE W/TOPSOIL & SOD

REFERENCE BENCHMARK ELEV 661.846
 BENCHMARK: X CUT ON N. WEST BOLT ON FIRE HYDRANT
 LOCATION : AT NORTH EAST CORNER OF NORTHWEST HWY. AND PRIVATE DR.

USER NAME = senadeeraai	DESIGNED -	REVISED -
	DRAWN -	REVISED -
PLOT SCALE = 10.0000' / in.	CHECKED -	REVISED -
PLOT DATE = 12/19/2019	DATE -	REVISED -

STATE OF ILLINOIS
DEPARTMENT OF TRANSPORTATION

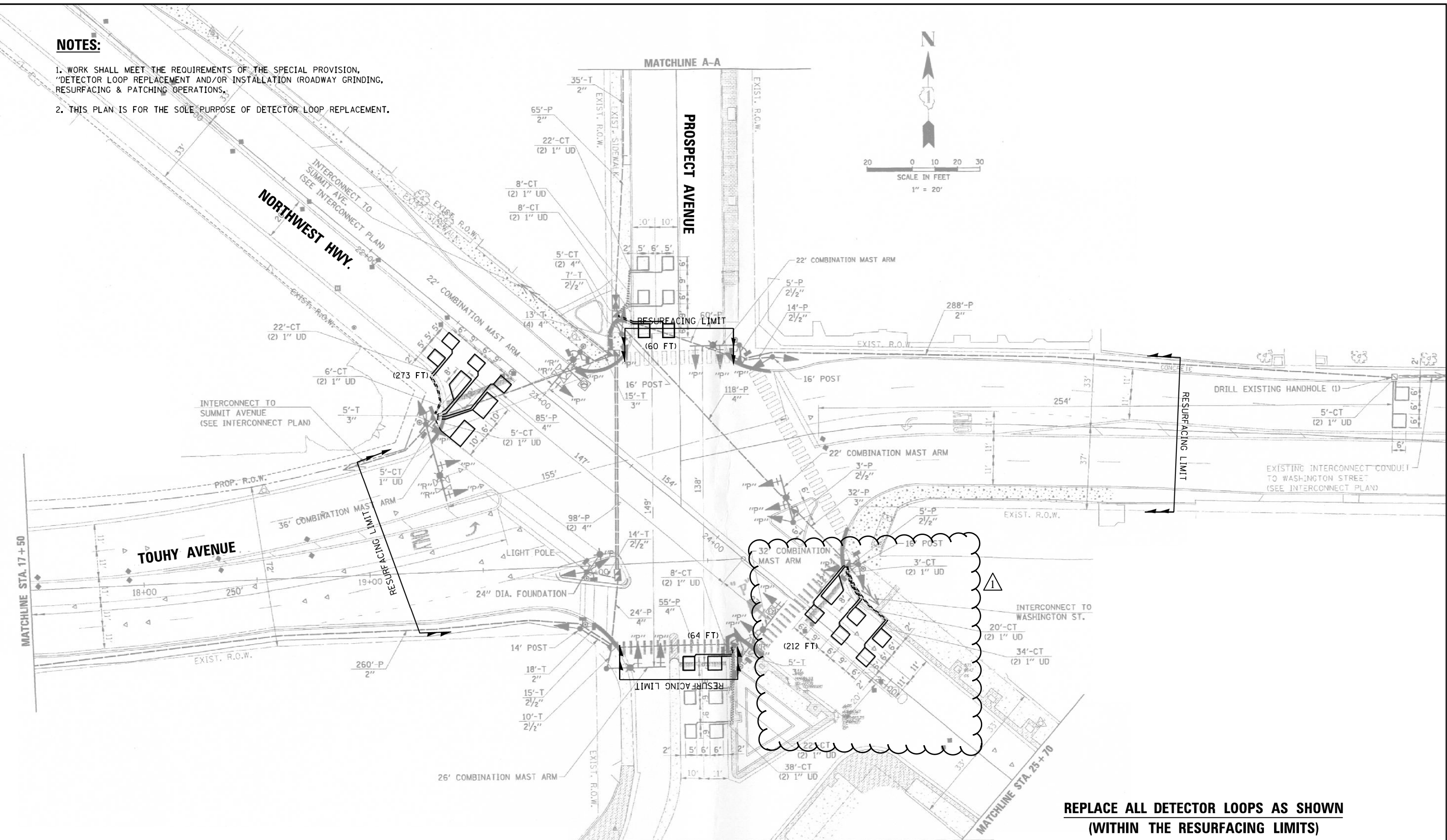
NORTHWEST HWY AT ENTRANCE S.OF WASHINGTON ST.
ADA CURB RAMP DETAILS (NE /SE & NW CORNER)

SCALE: 1"=5' SHEET OF SHEETS STA. TO STA.

F.A.U. RTE.	SECTION	COUNTY	TOTAL SHEETS	SHEET NO.
3524	(120Y&86B)RS-1	COOK	87	63
CONTRACT NO. 62G17				
ILLINOIS FED. AID PROJECT				

NOTES:

1. WORK SHALL MEET THE REQUIREMENTS OF THE SPECIAL PROVISION, "DETECTOR LOOP REPLACEMENT AND/OR INSTALLATION (ROADWAY GRINDING, RESURFACING & PATCHING OPERATIONS).
2. THIS PLAN IS FOR THE SOLE PURPOSE OF DETECTOR LOOP REPLACEMENT.



**REPLACE ALL DETECTOR LOOPS AS SHOWN
(WITHIN THE RESURFACING LIMITS)**

CODE	ITEM	QUANTITY	UNIT
88600600	DETECTOR LOOP REPLACEMENT	609	FOOT

FILE NAME = 62017 - Northwest Hwy at Prospect Ave and Touhy Ave - Copy.dgn	USER NAME = vargese	DESIGNED - AV	REVISED -
		DRAWN - AV	REVISED -
		CHECKED - LP	REVISED -
		DATE - 05/08/2018	REVISED -

**STATE OF ILLINOIS
DEPARTMENT OF TRANSPORTATION**

DETECTOR LOOP REPLACEMENT PLAN			
NORTHWEST HIGHWAY AT PROSPECT AVE. & TOUHY AVE.			
SCALE:	SHEET	OF SHEETS	STA. TO STA.

F.A.U. RTE. 3524	SECTION (120Y&86BRS-1)	COUNTY COOK	TOTAL SHEETS 87	SHEET NO. 73
CONTRACT NO. 62017				
ILLINOIS FED. AID PROJECT				