

045

01-17-2020 LETTING ITEM 045

STATE OF ILLINOIS
DEPARTMENT OF TRANSPORTATION
DIVISION OF HIGHWAYS

PROPOSED
HIGHWAY PLANS

FOR INDEX OF SHEETS, SEE SHEET NO. 2

HIGHWAY CLASSIFICATION

F.A.P. ROUTE 514 (IL 94)
CLASSIFICATION: MINOR ARTERIAL (NON-URBAN)

ADT: 1,823 (2017) PV = 81.68%
ADT: 2,225 (2037) SU = 8.11%
DESIGN SPEED: 60 MPH MU = 10.22%
POSTED SPEED: 55 MPH
CRS: 4.6 (2017)

F.A.P. ROUTE 514 (IL 94)
SECTION (106)RS-7, (107)RS-6, BDR
PROJECT STP-RX6W(036)
(3P) RESURFACING
HANCOCK COUNTY
C-96-034-13

F.A.P. RTE.	SECTION	COUNTY	TOTAL SHEETS	SHEET NO.
514		HANCOCK	29	1
		ILLINOIS	CONTRACT NO. 72G01	

*(106)RS-7, (107)RS-6, BDR

D-96-034-13



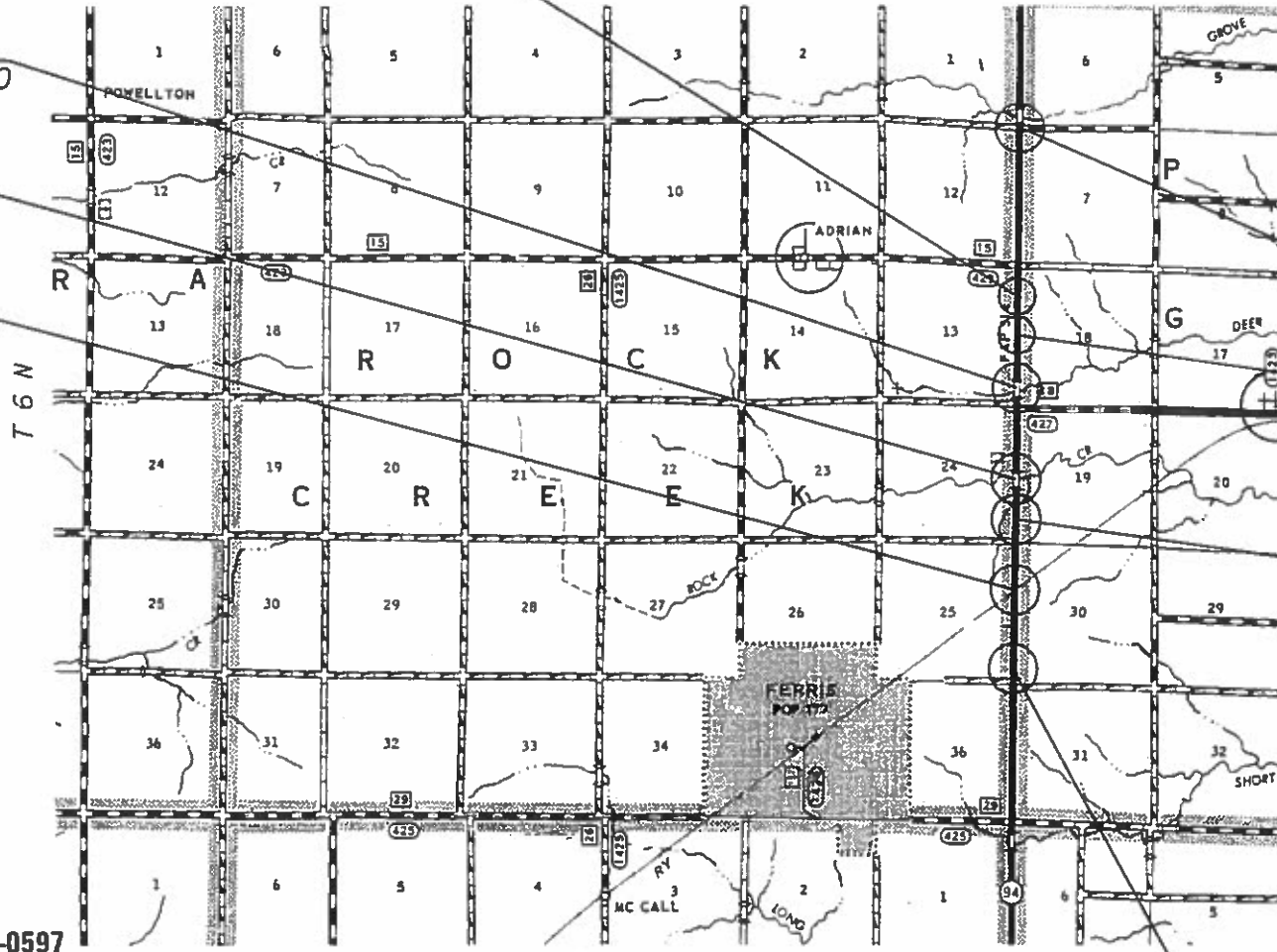
STA. EQUATION
STA. 308+00.00 BK =
STA. 308+18.00 AH

R 7 W

S.N. 034-2010
@ STA. 322+24.00

BRIDGE REPAIR (S.N. 034-0501)
STA. 355+57.88 TO STA. 357+12.70

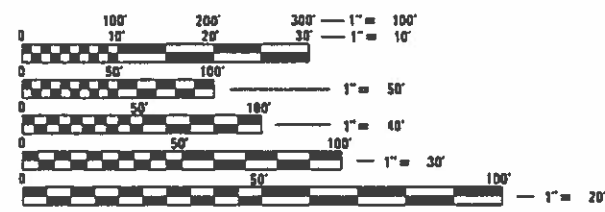
R.R. OMISSION (KEOKUK JUNCTION R.R.)
STA. 399+08.62 YO STA. 399+19.00



LIMITS OF PAVING IMPROV.
BEGINS AT STA. 218+50.76

SN 034-7006
@ STA. 309+00.00

SN 034-7008
@ STA. 365+83.00



FULL SIZE PLANS HAVE BEEN PREPARED USING STANDARD ENGINEERING SCALES. REDUCED SIZED PLANS WILL NOT CONFORM TO STANDARD SCALES. IN MAKING MEASUREMENTS ON REDUCED PLANS, THE ABOVE SCALES MAY BE USED.

J.U.L.I.E.
JOINT UTILITY LOCATION INFORMATION FOR EXCAVATION
1-800-892-0123
OR 811

STATE OF ILLINOIS
DEPARTMENT OF TRANSPORTATION

SUBMITTED Oct. 17 2019
Jeffrey P. Myers REGIONAL ENGINEER
Dec 10 2019 A. Elk
ENGINEER OF DESIGN AND ENVIRONMENT
Dec 10 2019 Paul P. Chaf
DIRECTOR OF HIGHWAYS PROJECT IMPLEMENTATION

TEAM ENGINEER: JAY EDWARDS (217) 785-0597
TEAM MANAGER: JONATHAN COX (217) 782-1378
CONTRACT NO. 72G01

GROSS LENGTH = 21,354.83 FT. = 4.04 MILE
NET LENGTH = 21,174.83 FT. = 4.00 MILE

LIMITS OF PAVING IMPROV.
ENDS AT STA. 433+88.79

PRINTED BY THE AUTHORITY
OF THE STATE OF ILLINOIS

GENERAL NOTES

- ① WHERE SECTION OR SUBSECTION MONUMENTS ARE ENCOUNTERED, THE ENGINEER SHALL BE NOTIFIED BEFORE SUCH MONUMENTS ARE REMOVED. THE CONTRACTOR SHALL PROTECT AND CAREFULLY PRESERVE ALL PROPERTY MARKS AND MONUMENTS UNTIL THE OWNER, AND AUTHORIZED SURVEYOR OR AGENT HAS WITNESSED OR OTHERWISE REFERENCED THEIR LOCATION.
- ② THE THICKNESS OF THE HMA MIXTURE SHOWN ON THE PLANS IS THE NOMINAL THICKNESS. DEVIATIONS FROM THE NOMINAL THICKNESS WILL BE PERMITTED WHEN SUCH DEVIATION OCCUR DUE TO IRREGULARITIES IN THE EXISTING SURFACE OR BASE ON WHICH THE BITUMINOUS MIXTURE IS PLACED.
- ③ THE FOLLOWING MIXTURE REQUIREMENTS ARE APPLICABLE:

LOCATION(S):	IL 94	IL 94	IL 94	Side Rds. & Entr.
MIXTURE USE(S):	HMA CONC SURF CSE	HMA BC IL-9.5 N50	PATCHING & BC WIDEN	INCIDENTAL HMA SURF
AC/PG:	PG 58-28	PG 58-28	PG 64-22 OR PG 58-28	PG 64-22 OR PG 58-28
DESIGN AIR VOIDS	4.0 @ N design = 50	4.0 @ N design = 50	4.0 @ N design = 50	4.0 @ N design = 50
MIXTURE COMPOSITION (Gradation Mixture)	IL 9.5	IL 9.5 FG	IL 19.0	IL 9.5
FRICITION AGGREGATE	MIX "C"	N/A	N/A	MIX "C"
QUALITY MANAGEMENT	OC/P	OC/P	OC/QA	OC/QA
SUBLOT SIZE	1,000 TONS	1,000 TONS	N/A	N/A

- ④ IN ADDITION TO FIELD AND AERIAL SURVEYS, PLAN DIMENSIONS AND DETAILS RELATIVE TO THE EXISTING FACILITIES HAVE BEEN TAKEN FROM EXISTING PLANS AND ARE SUBJECT TO CONSTRUCTION VARIATIONS. IT SHALL BE THE CONTRACTOR'S RESPONSIBILITY TO VERIFY SUCH DIMENSIONS AND DETAILS IN THE FIELD. SUCH VARIATIONS SHALL NOT BE A CAUSE FOR ADDITIONAL COMPENSATION DUE TO A CHANGE IN THE SCOPE OF WORK. HOWEVER, THE CONTRACTOR WILL BE PAID FOR THE QUANTITY ACTUALLY FURNISHED AT THE UNIT PRICE BID FOR THE WORK.
- ⑤ THE EXACT LOCATIONS AND SIZES OF PAVEMENT PATCHES SHALL BE DETERMINED BY THE ENGINEER IN THE FIELD.
- ⑥ THE APPROXIMATE AVERAGE THICKNESS OF 4" IS USED FOR CALCULATING THE QUANTITY FOR AGGREGATE WEDGE SHOULDER, TYPE B.
- ⑦ NO PASSING ZONES TO BE FIELD VERIFIED BY THE BUREAU OF OPERATIONS. THE RESIDENT ENGINEER SHALL NOTIFY THE BUREAU OF OPERATIONS AT LEAST 14 DAYS PRIOR TO PLACEMENT OF FINAL PERMANENT PAVEMENT MARKING. (PH: 217-785-5312)
- ⑧ EXISTING ROAD SIGNS THAT INTERFERE WITH CONSTRUCTION WILL BE REMOVED OR RELOCATED AS DIRECTED BY THE ENGINEER. AFTER CONSTRUCTION IS COMPLETED, THE CONTRACTOR WILL REPLACE THE SIGNS AS DIRECTED BY THE ENGINEER. THIS WORK WILL NOT BE PAID FOR SEPARATELY BUT SHALL BE INCLUDED IN THE CONTRACT AND NO COMPENSATION WILL BE ALLOWED.

RATES OF APPLICATION TABLES

THE FOLLOWING RATES OF APPLICATION HAVE BEEN ASSUMED IN CALCULATING PLAN QUANTITIES.

BITUMINOUS MATERIALS (TACK COAT): 0.05 LBS / 50 FT (MILLING)
0.025 LBS / 50 FT (HMA LIFT)

HMA SURFACE MIX C / BINDER (112 LBS): 0.056 TON / 50 YD • in

AGGREGATE MATERIALS: 1.80 TON / CU YD

NITROGEN FERTILIZER NUTRIENT: 90 LBS / ACRE

PHOSPHOROUS FERTILIZER NUTRIENT: 90 LBS / ACRE

POTASSIUM FERTILIZER NUTRIENT: 90 LBS / ACRE

AGRICULTURE GROUND LIMESTONE: 2 TON / ACRE

MULCH: 2 TONS / ACRE

COMMITMENTS

- ① THE RESIDENT ENGINEER SHALL CONTACT STUDIES AND PLANS CONCERNING ANY MAJOR PLAN CHANGE. TO MAKE SURE NO PREVIOUS COMMITMENTS (NOT LISTED) WERE MADE AFFECTING THE DESIGN AND ALLOW AN IMPROVED DESIGN FOR FUTURE PROJECTS.

INDEX OF SHEETS

- 1 COVER SHEET
- 2 GENERAL NOTES & INDEX OF SHEETS
- 3 - 7 SUMMARY OF QUANTITIES (5)
- 8 - 11 SCHEDULE OF QUANTITIES (4)
- 12 - 14 TYPICAL SECTIONS (3)
- 15 ALIGNMENT TIES AND BENCHMARKS
- 16 - 21 PLAN VIEW (6)
- 22 PATCHING DETAIL 034-0501
- 23 - 24 ENTRANCE AND SIDEROAD DETAILS (2)
- 25 - 29 CULVERT CROSS SECTIONS (5)

STANDARDS

- 000001-07 STANDARD SYMBOLS, ABBREVIATIONS, AND PATTERNS
- 442201-03 CLASS C & D PATCHES
- 542401-03 METAL FLARED END SECTIONS FOR PIPE CULVERTS
- 601001-05 PIPE UNDERDRAINS
- 601101-02 CONCRETE HEADWALL FOR PIPE UNDERDRAINS
- 606101-05 TYPE A INLET, OUTLET, & ENTRANCE
- 701001-02 OFF ROAD OPERATIONS, 2L, 2W, MORE THAN 15' AWAY FROM PAVEMENT EDGE.
- 701006-05 OFF ROAD OPERATIONS, 2L, 2W, 15'-24' FROM PAVEMENT EDGE
- 701011-04 OFF ROAD MOVING OPERATIONS 2L, 2W DAY ONLY
- 701201-05 OFF- ROAD OPERATIONS, 2L, 2W, 15'-24' FROM PAVEMENT EDGE
- 701301-04 LANE CLOSURE 2L, 2W SHORT TIME OPERATIONS
- 701306-04 LANE CLOSURE 2L, 2W SLOW MOVING OPERATIONS - DAY ONLY FOR SPEEDS > OR EQUAL TO 45 MPH
- 701311-03 LANE CLOSURE 2L, 2W MOVING OPERATIONS - DAY ONLY
- 701316-13 LANE CLOSURE 2L, 2W, BRIDGE REPAIR - FOR SPEEDS > OR EQUAL TO 45 MPH
- 701326-04 LANE CLOSURE 2L, 2W, PAVEMENT WIDENING FOR > OR EQUAL TO 45 MPH
- 701901-08 TRAFFIC CONTROL DEVICES
- 780001-05 TYPICAL PAVEMENT MARKING
- 781001-04 TYPICAL APPLICATIONS OF RAISED REFLECTIVE PAVEMENT MARKERS

DISTRICT SIX

EXAMINED 10/1 20 19
[Signature]
OPERATIONS ENGINEER

EXAMINED 10-7 20 19
[Signature]
PROJECT IMPLEMENTATION ENGINEER

EXAMINED October 4 20 19
[Signature]
PROGRAM DEVELOPMENT ENGINEER

CODE NO.	ITEM	UNIT	TOTAL QUANTITY	6-00711-0000	6-00711-0100
				80% FEDERAL	80% FEDERAL
				20% STATE	20% STATE
				ROADWAY	BRIDGE
				0005	0047
				RURAL	RURAL
20100110	TREE REMOVAL (6 TO 15 UNITS DIAMETER)	UNIT	90	90	
20100210	TREE REMOVAL (OVER 15 UNITS DIAMETER)	UNIT	46	46	
20200100	EARTH EXCAVATION	CU YD	363	363	
20200500	EARTH EXCAVATION (WIDENING)	CU YD	220	220	
21400100	GRADING AND SHAPING DITCHES	FOOT	300	300	
25000200	SEEDING, CLASS 2	ACRE	0.25	0.25	
25000400	NITROGEN FERTILIZER NUTRIENT	POUND	23	23	
25000500	PHOSPHORUS FERTILIZER NUTRIENT	POUND	23	23	
25000600	POTASSIUM FERTILIZER NUTRIENT	POUND	23	23	
25000700	AGRICULTURAL GROUND LIMESTONE	TON	0.4	0.4	
25100115	MULCH, METHOD 2	ACRE	0.25	0.25	
28000400	PERIMETER EROSION BARRIER	FOOT	523	523	
28100705	STONE DUMPED RIPRAP, CLASS A3	SQ YD	1112	1112	
28100805	STONE DUMPED RIPRAP, CLASS A3	TON	10	10	

CODE NO.	ITEM	UNIT	TOTAL QUANTITY	6-00711-0000	6-00711-0100
				80% FEDERAL	80% FEDERAL
				20% STATE	20% STATE
				ROADWAY	BRIDGE
				0005	0047
				RURAL	RURAL
28100807	STONE DUMPED RIPRAP, CLASS A4	TON	100	100	
31100300	SUBBASE GRANULAR MATERIAL, TYPE A 4"	SQ YD	491	491	
35600712	HOT-MIX ASPHALT BASE COURSE WIDENING, 9"	SQ YD	262	262	
35800100	PREPARATION OF BASE	SQ YD	308	308	
40200800	AGGREGATE SURFACE COURSE, TYPE B	TON	21	21	
40600290	BITUMINOUS MATERIALS (TACK COAT)	POUND	39345	39345	
40600982	HOT-MIX ASPHALT SURFACE REMOVAL - BUTT JOINT	SQ YD	1438	1438	
40600990	TEMPORARY RAMP	SQ YD	92	92	
40602965	HOT-MIX ASPHALT BINDER COURSE, IL- 9.5FG, N50	TON	3963	3963	
40604050	HOT-MIX ASPHALT SURFACE COURSE, IL- 9.5, MIX "C", N50	TON	4858	4858	
40800050	INCIDENTAL HOT-MIX ASPHALT SURFACING	TON	231	231	
44000155	HOT-MIX ASPHALT SURFACE REMOVAL, 1 1/2"	SQ YD	56744	56744	
44000400	GUTTER REMOVAL	FOOT	611	611	
44200168	PAVEMENT PATCHING, TYPE II, 14 INCH	SQ YD	100	100	

REV. - MS

FILE NAME =	USER NAME = coxjm	DESIGNED - JWC	REVISED -	STATE OF ILLINOIS DEPARTMENT OF TRANSPORTATION	SUMMARY OF QUANTITIES				F.A.P. RTE.	SECTION	COUNTY	TOTAL SHEETS	SHEET NO.
pw\plnroom.dot.illinois.gov\PIDOT\Documents\DOT Offices\District 6\Projects\067208\Drawings\CAD\Sheet\0672081-sht-500.dgn		CHECKED - JWC	REVISED -		514	*	HANCOCK	29	4				
Default	PLOT SCALE = 100.0000' / in.	DATE -	REVISED -		SCALE: SHEET 2 OF 5 SHEETS STA. TO STA.				CONTRACT NO. 72G01				
	PLOT DATE = 10/16/2019				ILLINOIS FED. AID PROJECT								

CODE NO.	ITEM	UNIT	TOTAL QUANTITY	6-00711-0000	6-00711-0100
				80% FEDERAL 20% STATE ROADWAY	80% FEDERAL 20% STATE BRIDGE
				0005	0047
				RURAL	RURAL
70100450	TRAFFIC CONTROL AND PROTECTION, STANDARD 701201	L SUM	1	1	
70100460	TRAFFIC CONTROL AND PROTECTION, STANDARD 701306	L SUM	1	1	
70100500	TRAFFIC CONTROL AND PROTECTION, STANDARD 701326	L SUM	1	1	
70106500	TEMPORARY BRIDGE TRAFFIC SIGNALS	EACH	1		1
70300100	SHORT TERM PAVEMENT MARKING	FOOT	8542	8542	
70300150	SHORT TERM PAVEMENT MARKING REMOVAL	SQ FT	712	712	
70300210	TEMPORARY PAVEMENT MARKING LETTERS AND SYMBOLS	SQ FT	123	123	
70300230	TEMPORARY PAVEMENT MARKING - LINE 5"	FOOT	53969	53969	
70300280	TEMPORARY PAVEMENT MARKING - LINE 24"	FOOT	48	48	
* 78001120	PAINT PAVEMENT MARKING - LINE 5"	FOOT	53,969	53,969	
* 78004200	PREFORMED PLASTIC PAVEMENT MARKING, TYPE B - INLAID - LETTERS AND SYMBOLS	SQ FT	123	123	
* 78004280	PREFORMED PLASTIC PAVEMENT MARKING, TYPE B - INLAID - LINE 24"	FOOT	48	48	
* 78100100	RAISED REFLECTIVE PAVEMENT MARKER	EACH	271	271	
78300200	RAISED REFLECTIVE PAVEMENT MARKER REMOVAL	EACH	271	271	

* SPECIALTY ITEM

REV. - MS

FILE NAME =	USER NAME = coxjw	DESIGNED - JWC	REVISED -	STATE OF ILLINOIS DEPARTMENT OF TRANSPORTATION	SUMMARY OF QUANTITIES			F.A.P. RTE.	SECTION	COUNTY	TOTAL SHEETS	SHEET NO.
pw:\plnroom.dot.illinois.gov\PIDOT\Documents\IDOT Offices\District 6\Projects\0672001\Drawings\CAD\sheet\0672001-shr-500.dgn	PLOT SCALE = 100.0000' / in.	CHECKED - JWC	REVISED -					514	.	HANCOCK	29	6
Default	PLOT DATE = 10/16/2019	DATE -	REVISED -		SCALE:	SHEET 4	OF 5	SHEETS	STA.	TO STA.	CONTRACT NO. 72G01	
ILLINOIS FED. AID PROJECT												

CODE NO.	ITEM	UNIT	TOTAL QUANTITY	6-00711-0000	6-00711-0100
				80% FEDERAL 20% STATE ROADWAY	80% FEDERAL 20% STATE BRIDGE
				0005	0047
				RURAL	RURAL
X0323586	PIPE DRAIN REMOVAL	FOOT	26	26	
X0327980	PAVEMENT MARKING REMOVAL - WATER BLASTING	SQ FT	18006	18006	
X4811300	AGGREGATE SHOULDERS, TYPE B (SPECIAL)	TON	50	50	
Z0001800	APPROACH SLAB REPAIR (PARTIAL DEPTH)	SQ YD	3		3
Z0012500	CONCRETE CURB REPAIR	FOOT	5		5
Z0016200	DECK SLAB REPAIR (PARTIAL)	SQ YD	22		22
Z0033700	LONGITUDINAL JOINT SEALANT	FOOT	21409	21409	
Z0034105	MATERIAL TRANSFER DEVICE	TON	4836	4836	
Ø Z0076600	TRAINEES	HOUR	500	500	
Z0048665	RAILROAD PROTECTIVE LIABILITY INSURANCE	L SUM	1	1	
Ø Z0076604	TRAINEES TRAINING PROGRAM GRADUATE	HOUR	500	500	
Z0049799	PROTECTING OR RESETTING SURVEY MARKERS	EACH	13	13	

Ø 0042

REV. - MS

FILE NAME =	USER NAME = coxjm	DESIGNED - JWC	REVISED -	STATE OF ILLINOIS DEPARTMENT OF TRANSPORTATION	SUMMARY OF QUANTITIES				F.A.P. RTE.	SECTION	COUNTY	TOTAL SHEETS	SHEET NO.
pw:\plnroom.dot.illinois.gov\PIDOT\Documents\DOT Offices\District 6\Projects\067201\BROWN\CABSheet\067201-sh1-500.dgn		CHECKED - JWC	REVISED -		514	*	HANCOCK	29	7				
Default	PLOT SCALE = 100.0000' / 1in.	DATE -	REVISED -		SCALE: SHEET 5 OF 5 SHEETS STA. TO STA.				CONTRACT NO. 72G01				
	PLOT DATE = 10/16/2019								ILLINOIS FED. AID PROJECT				

TREE REMOVAL SCHEDULE		
LOCATION	20100110 TREE REM 6-15 (UNIT)	20100210 TREE REM OVR 15 (UNIT)
FAP 514 (IL 94)		
230+50.00 LT (8 TREES)	90	
339+50.00 LT (1 TREE)		46
TOTAL =	90	46

GRADING & SHAPING DITCH		21400100
LOCATION	GRADING & SHAPING DITCHES (FOOT)	
FAP 514 (IL 94)		
364+33.00 TO 365+33.00 LT	100.00	
365+00.00 TO 366+00.00 RT	100.00	
365+73.00 TO 366+73.00 LT	100.00	
TOTAL =	300.00	

RIP RAP SCHEDULE			
LOCATION	28100705 STONE DUMPED RIPRAP A3 (SQ YD)	28100805 STONE DUMPED RIPRAP A3 (TON)	28100807 STONE DUMPED RIPRAP A4 (TON)
FAP 514 (IL 94)			
354+33.00 TO 355+75.00 RT	262.55		
354+44.00 TO 355+75.00 LT	230.99		
356+85.00 TO 358+78.00 LT	319.81		
356+93.00 TO 358+78.00 RT	297.83		
034-7008 - AROUND EAST WING WALL		10.00	
034-7008 SCOUR HOLE STA 365+54.00,29.80'			100.00
TOTAL =	1112	10	100

EARTHWORK SCHEDULE					
LOCATION	20200100	20200500	SHRINK FACTOR (CU YD)	EMBANK (CU YD)	BALANCE WASTE + SHORT() (CU YD)
	EARTH EXCAV (CU YD)	EARTH EXCAV WIDENING (CU YD)			
FAP 514 (IL 94)					
358+70.00 TO 361+45.00	321.76	219.21	405.73	16.01	389.72
EARTH EX FOR RIPRAP IF NEEDED	41.00	0.31	30.98	0.00	30.98
TOTAL =	363	220	437	16	421

Shrinkage Factor 25%

SEEDING SCHEDULE						
LOCATION	AREA (SQ FT)	25000200	25000400	25000500	25000600	25000700
		SEEDING & MULCH METH 2 (ACRE)	NITRO FERT NUTRI (POUND)	PHOSP FERT NUTRI (POUND)	POTASS FERT NUTRI (POUND)	AGRI GRD LIMSTN (TON)
FAP 514 (IL 94)						
358+17.00 TO 362+50.00 LT	4,187.17	0.10	8.65	8.65	8.65	0.19
358+52.00 TO 362+50.00 RT	3,550	0.08	7.33	7.33	7.33	0.16
TOTAL =		0.18	16	16	16	0.36

USE 0.25 USE 23 USE 23 USE 23 USE 0.40

PERIMETER EROSION BARRIER		28000400
LOCATION	PERIMETER EROSION BAR (FOOT)	
FAS 728 (IL 138)		
359+00.00 TO 361+33.00 RT	233	
359+00.00 TO 361+90.00 LT	290	
TOTAL =	523	

WIDENING SCHEDULE					
LOCATION	LENGTH (FOOT)	WIDTH (FOOT)	35600712	31100300	
			HMA BCS WIDENING (SQ YD)	SUB BASE GRANULAR (SQ YD)	
FAP 514 (IL 94)					
358+78.00 TO 361+45.00 RT	267.00	4.00	118.67		
358+78.00 TO 362+00.00 LT	322.00	4.00	143.11		
358+78.00 TO 361+45.00 RT	267.00	7.50		222.50	
358+78.00 TO 362+00.00 LT	322.00	7.50		268.33	
TOTAL			262	491	

BITUMINOUS MATERIALS (TACK COAT)				40600290	
LOCATION	LENGTH (FOOT)	WIDTH (FOOT)	AREA (SQ FT)	BIT MAT TC MILLING (POUND)	BIT MAT TC HMA LIFT (POUND)
FAP 514 (IL 94)					
218+50.76 TO 219+05.76	55	24.0	1,320	66.00	33.00
219+05.76 TO 308+00.00	8,894	24.0	213,462	10,673.09	5,336.54
STA EQUATION: STA 308+00.00 BK= STA 308+18.00 AH					
308+18.00 TO 320+10.00	1,192	24.0	28,608	1,430.40	715.20
320+10.00 TO 321+90.00	180	24 to 33.5	5,175.00	258.75	129.38
321+90.00 TO 322+54.00	64	33.5	2,144.00	107.20	53.60
322+54.00 TO 324+35.00	181	33.5 to 24	5,203.75	260.19	130.09
324+35.00 TO 353+36.06	2,901	24.0	69,625.4	3,481.27	1,740.64
353+36.06 TO 355+19.47	183	26 to 34.5	5,548.15	277.41	138.70
355+19.47 TO 355+57.88	38	34.5	1,325.14	66.26	33.13
BRIDGE OMISSION: STA. 355+57.88 TO STA. 357+12.70					
357+12.70 TO 358+41.00	128	34.5 to 26	3,881.08	194.05	97.03
358+41.00 TO 358+71.00	30	26.0	780.00	39.00	19.50
358+71.00 TO 361+99.00	328	22.0	7,216.00	360.80	180.40
361+99.00 TO 362+29.00	30	24.0	720.00	36.00	18.00
362+29.00 TO 398+64.00	3,635	24.0	87,240.0	4,362.00	2,181.00
398+64.00 TO 399+08.62	45	24.0	1,070.9	53.54	26.77
R.R. OMISSION: Sta. 399+08.62 to Sta.399+19.00					
399+19.00 TO 433+88.79	3,470	24.0	83,274.96	4,163.75	2,081.87
INCIDENTAL HMA SURFACING					
ENTRANCES (HMA)				3,208.00	160.40
SIDEROADS				4,779.50	238.98
TOTAL =				26,229	13,115
39,345					

HMA SURFACE REMOVAL					40600982	44000155
LOCATION	LENGTH (FOOT)	WIDTH (FOOT)	HMA SURF REM BJ (SQ YD)	HMA SURF REM 1 1/2" (SQ YD)		
FAP 514 (IL 94)						
218+50.76 TO 218+80.76	30.0	24.0	80.00			
218+80.76 TO 308+00.00	8,919.2	24.0		23,784.64		
STA EQUATION: STA 308+00.00 BK= STA 308+18.00 AH						
308+18.00 TO 320+10.00	1,192.0	24.0		3,178.67		
320+10.00 TO 321+90.00	180.0	24 to 33.5		575.00		
321+90.00 TO 322+54.00	64.0	33.5		238.22		
322+54.00 TO 324+35.00	181.0	33.5 to 24		578.19		
324+35.00 TO 353+36.06	2,901.1	24.0		7,736.16		
353+36.06 TO 355+27.88	191.8	26 to 34.5		644.73		
355+27.88 TO 355+57.88	30.0	34.5	115.00			
BRIDGE OMISSION: STA. 355+57.88 TO STA. 357+12.70						
357+12.70 TO 357+42.70	30.0	34.5	115.00			
357+42.70 TO 358+41.00	98.3	34.5 to 26		330.40		
358+41.00 TO 358+69.85	28.8	26.0		83.34		
358+69.85 TO 362+52.85	383.0	22.0		936.22		
362+52.85 TO 398+78.62	3,625.8	24.0		9,668.72		
398+78.62 TO 399+08.62	30.0	24.0	80.00			
R.R. OMISSION: STA. 399+08.62 TO STA 399+19.00						
399+19.00 TO 399+49.00	30.0	24.0	80.00			
399+49.00 TO 433+20.00	3,371.0	24.0		8,989.33		
433+58.79 TO 433+88.79	30.0	24.0	80.00			
INCIDENTAL HMA SURFACING						
ENTRANCES (HMA)			356.44			
SIDEROADS			531.06			
TOTAL =			1,438	56,744		

TEMPORARY RAMP				40600990
LOCATION	LENGTH (FOOT)	WIDTH (FOOT)	TEMP RAMP (SQ YD)	
FAP 514 (IL 94)				
218+75.76 TO 218+80.76	5.0	24.0	13.33	
355+52.88 TO 355+57.88	5.0	34.5	19.17	
BRIDGE OMISSION: STA. 355+57.88 TO STA. 357+12.70				
357+12.70 TO 357+17.70	5.0	34.5	19.17	
399+03.62 TO 399+08.62	5.0	24.0	13.33	
R.R. OMISSION: STA. 399+08.62 TO STA 399+19.00				
399+19.00 TO 399+24.00	5.0	24.0	13.33	
433+83.79 TO 433+88.79	5.0	24.0	13.33	
TOTAL =			92	

GUTTER SCHEDULE					44000400	60600095	60602500
LOCATION	LENGTH (FOOT)	GUTTER REMOVAL (FOOT)	SI CONC OUTLETS (CU YD)	GUTTER TYPE A (FOOT)			
FAP 514 (IL 94)							
358+67.00 TO 361+45.00 RT	278.00	278.00					
358+67.00 TO 362+00.00 LT	333.00	333.00					
359+00.00 TO 361+33.00 RT	233.00		3.50	233.00			
359+00.00 TO 361+90.00 LT	290.00		3.50	290.00			
TOTAL		611	7	523			

SHORT-TERM PAVEMENT MARKING				70300100	70300150
LOCATION	LENGTH (FOOT)	SHORT TERM PVT MK (FOOT)	SHORT TERM PVT MK REM (SQ FT)		
FAP 514 (IL 94)					
Milling					
218+50.76 TO 308+00.00	8,949.24	894.92	298.31		
STA EQUATION: STA 308+00.00 BK= STA 308+18.00 AH					
308+18.00 TO 355+57.88	4,739.88	473.99	158.00		
BRIDGE OMISSION: STA. 355+57.88 TO STA. 357+12.7					
357+12.70 TO 399+08.62	4,195.92	419.59	139.86		
R.R. OMISSION: STA. 399+08.62 TO STA 399+19.00					
399+19.00 TO 433+88.79	3,469.79	346.98	115.66		
SUB-TOTAL =		2,135.48	711.83		
Tack Coat					
		2,135.48			
Binder					
		2,135.48			
HMA Surface Course					
		2,135.48			
TOTAL =		8,542	712		

PAVING SCHEDULE							40602965	40603310	Z0033700	Z0034105
LOCATION	LENGTH (FOOT)	WIDTH (FOOT)	HMA BC IL 9.5 FG N50 (TON)	HMA SURF CRSE MIX C N50 (TON)	LONG JOINT SEALANT (FOOT)	MATERIAL TRANS DEVICE (TON)				
FAP 514 (IL 94)										
218+50.76 TO 218+80.76	30.0	24.0		6.72	30.00	6.72				
218+80.76 TO 219+05.76	25.0	24.0	0.47	5.60	25.00	5.60				
219+05.76 TO 308+00.00	8,894.2	24.0	1,660.26	1,992.31	8,894.24	1,992.31				
STA EQUATION: STA 308+00.00 BK= STA 308+18.00 AH										
308+18.00 TO 308+53.45	35.5	24.0	6.62	7.9408	35.45	7.94				
308+53.45 TO 308+78.45	25.0	25.0	4.86	5.83	25.00	5.83				
308+78.45 TO 320+10.00	1,131.6	24.0	211.22	253.47	1,131.55	253.47				
320+10.00 TO 321+90.00	180.0	24 to 33.5	40.25	48.30	180.00	48.30				
321+90.00 TO 322+54.00	64.0	33.5	16.68	20.01	64.00	20.01				
322+54.00 TO 324+35.00	181.0	33.5 to 24	40.47	48.57	181.00	48.57				
324+35.00 TO 353+36.06	2,901.1	24	541.53	649.84	2,901.06	649.84				
353+36.06 TO 355+02.88	166.8	26 to 34.5	39.25	47.10	166.82	47.10				
355+02.88 TO 355+27.88	25.0	34.5	0.67	8.05	25.00	8.05				
355+27.88 TO 355+57.88	30.0	34.5		9.66	30.00	9.66				
BRIDGE OMISSION: STA. 355+57.88 TO STA. 357+12.70										
357+12.70 TO 357+42.70	30	34.5		9.66	30.00	9.66				
357+42.70 TO 357+67.70	25.0	34.5	0.67	8.05	25.00	8.05				
357+67.70 TO 358+41.00	73.3	34.5 to 26	17.25	20.70	73.30	20.70				
358+41.00 TO 358+71.00	30.0	26.0	6.07	7.28	30.00	7.28				
358+71.00 TO 362+34.00	363.0	22.0	62.11	74.54	363.00	74.54				
362+34.00 TO 398+53.62	3,619.6	24.0	675.66	810.79	3,619.62	810.79				
398+53.62 TO 398+78.62	25.0	24.0	0.47	5.60	25.00	5.60				
398+78.62 TO 399+08.62	30.0	24.0		6.72	30.00	6.72				
R.R. OMISSION: STA. 399+08.62 TO STA 399+19.00										
399+19.00 TO 399+49.00	30.0	24.0		6.72	30.00	6.72				
399+49.00 TO 399+74.00	25.0	24.0	0.47	5.60	25.00	5.60				
399+20.00 TO 433+33.79	3,413.8	24.0	637.24	764.69	3,413.79	764.69				
433+33.79 TO 433+58.79	25.0	24.0	0.47	5.60	25.00	5.60				
433+58.79 TO 433+88.79	30.0	24.0		6.72	30.00	6.72				
SURFACE COURSE FOR WIDENING AREA*										
TOTAL =			3,963	4,858	21,409	4,836				

*SEE WIDENING SCHEDULE FOR WIDENING AREA

AGGREGATE SHOULDER, TYPE B					48101200
LOCATION	LENGTH (FOOT)	WIDTH (FOOT)	AREA (CU YD)	AGG SHLD TB (TON)	
FAP 514 (IL 94)					
218+50.76 TO 308+00.00	8,949.24	6.00	1,325.81	2,386.46	
STA EQUATION: STA 308+00.00 BK= STA 308+18.00 AH					
308+18.00 TO 355+57.88	4,739.88	6.00	702.20	1,263.97	
BRIDGE OMISSION: STA. 355+57.88 TO STA. 357+12.70					
357+12.70 TO 358+68.85	156.15	6.00	23.13	41.64	
GUTTER SECTION FR. STA. 358+68.85 TO STA. 362+52.85					
362+52.85 TO 399+08.62	3,655.77	6.00	541.60	974.87	
R.R. OMISSION: STA. 399+08.62 TO STA 399+19.00					
399+19.00 TO 433+88.79	3,469.79	6.00	514.04	925.28	
ADD SHOULDER TO FILL GAPS AT APPROACH PVT SN 034-0501 5.00					
Subtract Side Rds. & Ent.					
			57.19	-108.66	
TOTAL =				5,489	

PIPE DRAIN SCHEDULE							5426272	60100060	60100945	60108206	X0323586
LOCATION	LENGTH (FOOT)	METAL FL END SEC 12" (EACH)	CONC HDWL FR P DRAIN (EACH)	PIPE DRAINS 12" (FOOT)	PIPE UNDER DR T 2, 6" (FOOT)	PIPE DRAIN REM (FOOT)					
FAP 514 (IL 94)											
355+72.00	RT	12.00	1	12.00		12.00					
355+77.00	LT	14.00	1	14.00		14.00					
358+58.00 TO 361+33.00	RT	275.00		1		275.00					
358+58.00 TO 361+90.00	LT	332.00		1		332.00					
TOTAL			2	2	26	607					26

REV. - MS

FILE NAME =	USER NAME = coxjw	DESIGNED - JWC	REVISED -	STATE OF ILLINOIS DEPARTMENT OF TRANSPORTATION	SCHEDULE OF QUANTITIES				F.A.P. RTE.	SECTION	COUNTY	TOTAL SHEETS	SHEET NO.
pw\planroom.dot.illinois.gov\PIDOT\Documents\DOT Offices\District 6\Projects\0672601\Drawings\CAD\sheet\0672601-shd-schedule.dwg	PLOT SCALE = 100.0000' / 1" =	CHECKED - JWC	REVISED -						514	*	HANCOCK	29	9
Default	PLOT DATE = 10/16/2019	DATE -	REVISED -		SCALE:	SHEET 2 OF 4 SHEETS	STA.	TO STA.	ILLINOIS FED. AID PROJECT				
										CONTRACT NO. 72G01			

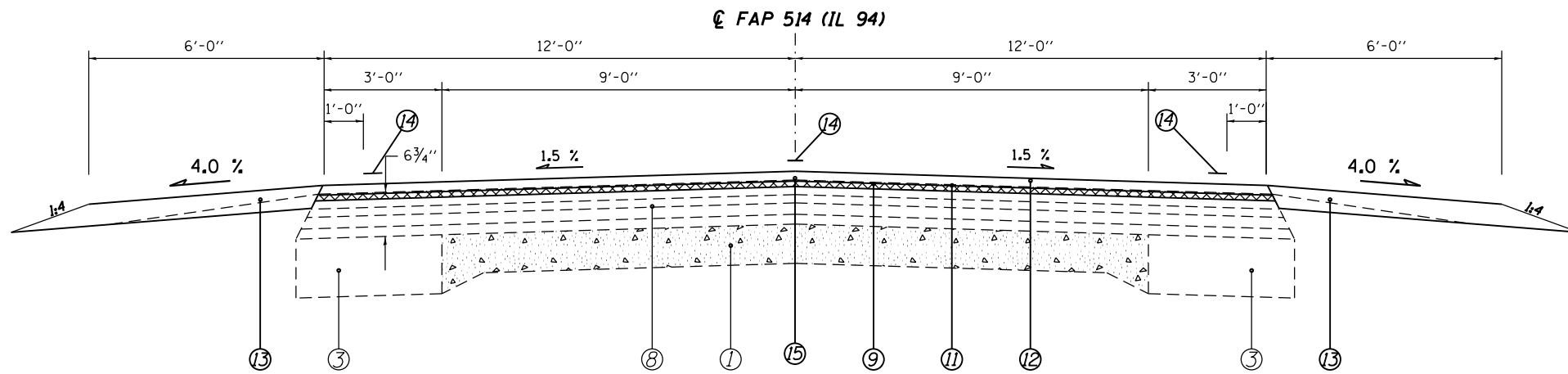
INCIDENTAL HOT-MIX ASPHALT SURFACING										35800100	HMA / (EX. AGGR.)		HMA				40800050	40200800	
DESCRIPTION	STATION	EXIST. ENTR.	FROM E.O.P. (FOOT)	WIDTH		THICKNESS (INCH)	PREP. OF BASE (SQ YD)	ENTR & SIDE RD.		ENTR.		SIDE RD.		TOTAL (TON)	Aggr. Shldr AREA (SQ FT)	AGG SURF CSE (TON)			
				(@eop)	(etnr.)			AREA (SQ FT)	TOTAL (TON)	AREA (SQ FT)	TOTAL (TON)	AREA (SQ FT)	TOTAL (TON)						
				(FOOT)	(FOOT)														
<i>[F.A.P. 745 (IL 104)]</i>																			
LIMITS OF IMPROVEMENT	218+50.76																		
PAVING BEGINS	219+05.76																		
E CR 2300N	STA 219+41.00 RT	BIT.	18	45	29	2.25 to 1.5						666.00	7.77	7.77	186.00				
E CR 2300N (CH 15)	STA 219+46.18 LT	BIT.	12	67	44	2.25 to 1.5						666.00	7.77	7.77	195.00				
HMA. P.E.	STA 229+00.00 RT	BIT.	8	52	33	2.25 to 1.5				340.00	3.97			3.97	138.00	2.20			
HMA. P.E. (w/ MBT) (leading)	STA 230+00.00 RT	BIT.	7	56	31	2.25 to 1.5		W(@ entr) = 17		304.50	3.55			3.55	126.00				
HMA MBT (85%)	STA 272+81.00 RT	BIT.	7	64	20	2.25 to 1.5				294.00	3.43			3.43	93.00				
E CR 2200N (Adrian Rd.)(CH 15)	STA 273+36.24 RT	BIT.	9	87	64	2.25 to 1.5						679.50	7.93	7.93					
E CR 2200N (TR 2200N)	STA 273+70.30 LT	BIT.	10	47	29	2.25 to 1.5						380.00	4.43	4.43	138.00				
HMA MBT	STA 277+16.00 RT	BIT.	7	64	20	2.25 to 1.5				294.00	3.43			3.43	93.00				
HMA. C.E.	STA 279+16.00 RT	AGG	9	44	26	8	35.00	315.00	15.68					15.68	123.00	1.73			
HMA MBT	STA 284+10.00 LT	BIT.	7	64	20	2.25 to 1.5				294.00	3.43			3.43	93.00				
HMA. P.E.	STA 284+13.00 RT	BIT.	10	40	23	2.25 to 1.5				315.00	3.68			3.68	120.00				
HMA. C.E.	STA 286+76.00 LT	AGG	9	41	23	8	32.00	288.00	14.34					14.34	114.00	1.53			
STA EQUATION	STA 308+00.00 BK= TO STA 308+18.00 AH																		
HMA. P.E. (w/ MBT) (leading)	STA 316+67.00 RT	BIT.	7	63	38	2.25 to 1.5		W(@ entr) = 18		353.50	4.12			4.12	147.00	2.53			
E CR 2100N (Burnside Rd.)	STA 326+81.91 RT	BIT.	15	50	26	2.25 to 1.5						570.00	6.65	6.65	159.00				
	STA 328+26.88 RT	BIT.	15	72	48	2.25 to 1.5						900.00	10.50	10.50	225.00				
HMA. C.E.	STA 329+11.00 RT	AGG	9	53	35	8	44.00	396.00	19.71					19.71	150.00	2.33			
HMA MBT	STA 329+80.00 LT	BIT.	7	64	20	2.25 to 1.5				294.00	3.43			3.43	93.00				
HMA. C.E.	STA 330+18.00 RT	AGG	9	43	25	8	34.00	306.00	15.23					15.23	120.00	1.67			
HMA. P.E.	STA 346+74.00 LT	BIT.	7	33	19	2.25 to 1.5				182.00	2.12			2.12	90.00				
HMA. C.E.	STA 347+75.00 LT	BIT.	9	36	18	2.25 to 1.5				243.00	2.84			2.84	99.00				
BRIDGE OMISSION	STA 355+57.88 TO STA 357+12.70																		
HMA. C.E.	STA 361+68.00 RT	AGG	9	38	20	8	29.00	261.00	12.99					12.99	105.00	1.33			
HMA. P.E. (w/ MBT) (trailing)	STA 370+00.00 LT	AGG	7	75	42	8	45.50	409.50	20.38	W(@ entr) = 12				20.38	159.00	2.80			
E CR 2000N	STA 380+33.20 RT	BIT.	17	69	39	2.25 to 1.5						918.00	10.71	10.71	210.00				
HMA MBT	STA 380+78.00 LT	BIT.	7	64	20	2.25 to 1.5				294.00	3.43			3.43	93.00				
HMA. C.E.	STA 393+82.00 LT	AGG	9	53	35	8	44.00	396.00	19.71					19.71	150.00	2.33			
HMA. C.E.	STA 396+40.00 LT	AGG	9	53	35	8	44.00	396.00	19.71					19.71	150.00	2.33			
RAILROAD OMISSION	STA 399+08.62 TO STA 399+19.00																		
SECTION ENDS	433+33.79																		
LIMITS OF IMPROVEMENT:	433+88.79																		
Total=																			
							308	2,768	138	3,208	37	4,780	56	231	3,369	21			

PAVEMENT MARKING SCHEDULE	78001120				78004280	78004200
	5"				24"	L & S
	PAINT PAVT MK (YELLOW) SKIP-DAS (FOOT)	PAINT PAVT MK (YELLOW) SOLID (FOOT)	PAINT PAVT MK (YELLOW) DBL-SOLID (FOOT)	PAINT PAVT MK (WHITE) SOLID (FOOT)	PREF PL PAVT MK (INLAID) SOLID (FOOT)	PREF PL PAVT MK (INLAID) (WHITE) SOLID (SQ FT)
FAP 514 (IL 94)						
218+50.76 TO 232+00.00	337.3	1,349.2		2,698.5		
232+00.00 TO 308+00.00	1,900.0			15,200.0		
STA EQUATION: STA 308+00.00 BK= STA 308+18.00 AH						
308+18.00 TO 338+00.00	745.5			5,964.0		
338+00.00 TO 352+00.00	350.0	1,400.0		2,800.0		
352+00.00 TO 354+50.00	62.5		500.0	500.0		
354+50.00 TO 359+50.00	125.0	500.0		1,000.0		
359+50.00 TO 389+50.00	750.0			6,000.0		
389+50.00 TO 407+50.00	450.0	1,800.0		3,600.0		
407+50.00 TO 433+88.79	659.7			5,277.6		
RAILROAD MARKINGS						
STA. 395+50.00 NB LANE	"R" MARKINGS (x2)					7.2
	X' MARKINGS					54.0
	BARS (x2) @ 12'			24.0		
STA. 402+50.00 SB LANE	"R" MARKINGS (x2)					7.2
	X' MARKINGS					54.0
	BARS (x2) @ 12'			24.0		
SUBTOTAL =						
	5,380.0	5,049.2	500.0	43,040.1	48.0	122.4
TOTAL =						
	53,969			48	123	

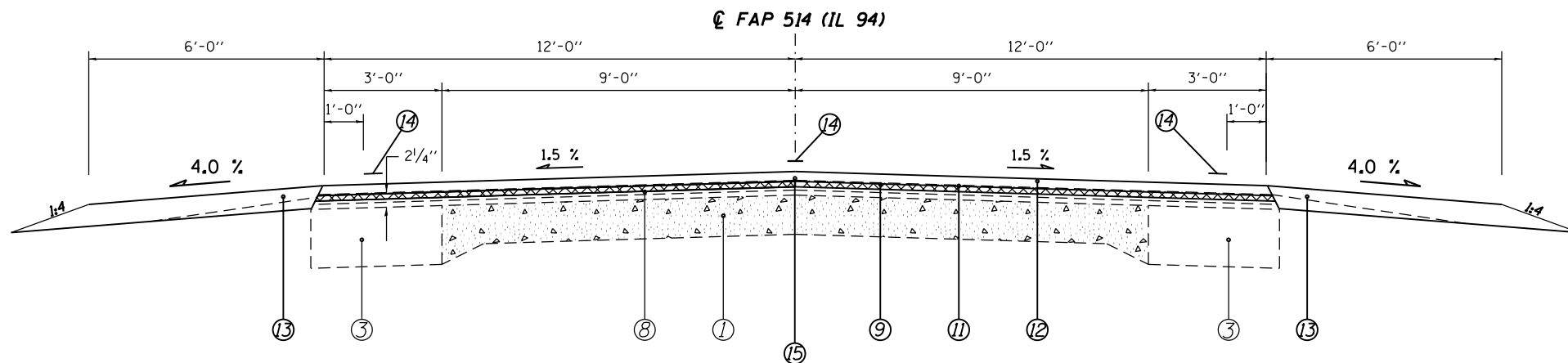
AGGREGATE SHOULDERS, TYPE B (SPECIAL)	X4811300
LOCATION	AGG SHLDS TB SP (TON)
FAP 514 (IL 94)	
FOR USE AROUND GUARDRAIL AT SN 034-0501	50
TOTAL =	
	50

PROTECTING & RESETTING SURVEY MARKERS	Z0049799
LOCATION	PROT RESET SUR MK (EACH)
FAP 514 (IL 94)	
SEE PLAN SHEET FOR SURVEY MARKER LOCATIONS	13
TOTAL =	
	13

RAISED REFLECTIVE PAVEMENT MARKING	78300200	78100100
LOCATION	RAISED REFL PM REMOV (EACH)	RAISED REFL PAVT MK (EACH)
FAP 514 (IL 94)		
218+65.00 TO 308+00.00	113	113
STA EQUATION: STA 308+00.00 BK= STA 308+18.00 AH		
308+18.00 TO 355+79.47	61	61
BR OMISS: STA. 355+57.88 TO STA. 357+12.70		
357+12.70 TO 399+08.62	53	53
R.R. OMISS: STA. 399+08.62 TO STA 399+19.00		
399+19.00 TO 433+88.79	44	44
TOTAL =		
	271	271



STA. 218+50.76 TO STA. 231+08.00 [1,257.24']
 STA. 234+00.00 TO STA. 239+00.00 [500.00']
 STA. 275+96.00 TO STA. 283+96.00 [800.00']



STA. 231+08.00 TO STA. 234+00.00 [292.00']
 STA. 239+00.00 TO STA. 240+10.00 [110.00']
 STA. 244+90.00 TO STA. 259+10.00 [1,420.00']
 STA. 261+90.00 TO STA. 275+96.00 [1,406.00']
 STA. 283+96.00 TO STA. 290+30.00 [634.00']
 STA. 294+70.00 TO STA. 298+10.00 [340.00']
 STA. 303+30.00 TO STA. 308+00.00 [470.00']
 STA. 308+18.00 TO STA. 314+60.00 [642.00']
 STA. 318+40.00 TO STA. 320+10.00 [170.00']

STA. 324+35.00 TO STA. 325+60.00 [125.00']
 STA. 329+40.00 TO STA. 342+60.00 [1,320.00']
 STA. 352+40.00 TO STA. 353+36.06 [96.06']
 STA. 362+52.85 TO STA. 385+60.00 [2,307.15']
 STA. 388+40.00 TO STA. 390+60.00 [220.00']
 STA. 395+40.00 TO STA. 399+08.62 [368.62']
 STA. 399+19.00 TO STA. 415+85.00 [1,666.00']
 STA. 420+65.00 TO STA. 429+10.00 [845.00']

STA. EQUATION
 STA 308+00.00 BK =
 STA 308+18.00 AH

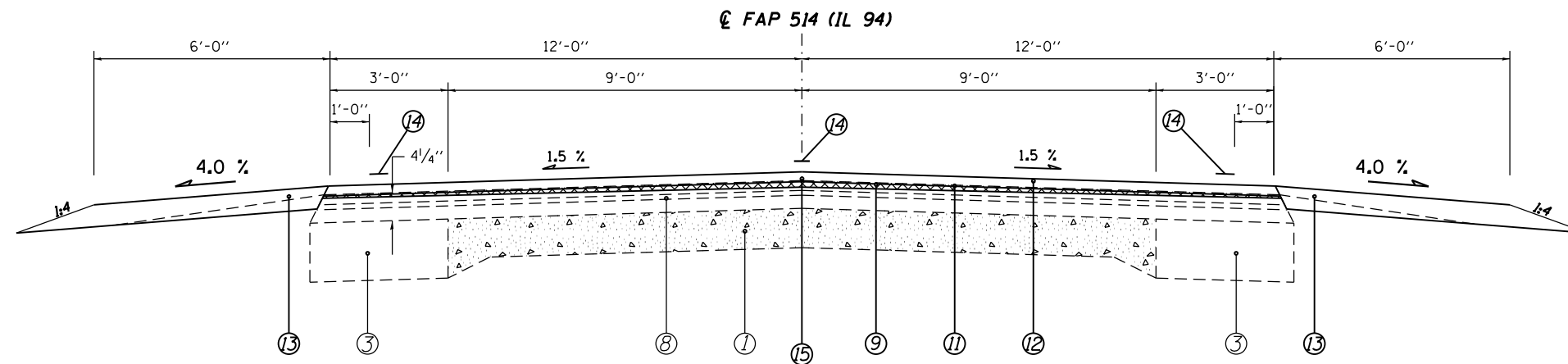
S.N. 034-7008
 @ STA. 365+83.00

R.R. OMISSION
 KEOKUK JUNC. R.R.
 STA 399+08.62
 STA 399+19.00

- LEGEND**
- ① EXISTING PCC PAVEMENT 9'-6"-9"
 - ② EXISTING CLASS B PATCH 9"
 - ③ EXISTING BITUMINOUS BASE COURSE WIDENING 9"
 - ④ EXISTING BITUMINOUS BASE COURSE 11"
 - ⑤ EXISTING BITUMINOUS BASE COURSE WIDENING 11"
 - ⑥ EXISTING BITUMINOUS SHOULDER 10"
 - ⑦ EXISTING PCC GUTTER, TYPE B
 - ⑧ EXISTING BITUMINOUS OVERLAY
 - ⑨ PROPOSED HOT-MIX ASPHALT SURFACE REMOVAL, 1 1/2"
 - ⑩ PROPOSED HOT-MIX ASPHALT BASE COURSE WIDENING, 9"
 - ⑪ PROPOSED HOT-MIX ASPHALT BINDER COURSE, IL-9.5FG, N50 1 1/4"
 - ⑫ PROPOSED HOT-MIX ASPHALT SURFACE COURSE, MIX "C", N50 1 1/2"
 - ⑬ PROPOSED AGGREGATE SHOULDERS, TYPE B
 - ⑭ PROPOSED PAINT PAVEMENT MARKING LINE 5"
 - ⑮ PROPOSED LONGITUDINAL JOINT SEALANT
 - ⑯ PROPOSED SUB-BASE GRANULAR MATERIAL, TYPE A 4"
 - ⑰ PROPOSED GUTTER REMOVAL
 - ⑱ PROPOSED CONCRETE GUTTER, TYPE A
 - ⑲ PROPOSED DRAINAGE DITCH FOR UNDERDRAINS W=1' - D=2.5'
 - ⑳ PROPOSED PIPE UNDERDRAINS, TYPE 2, 6"

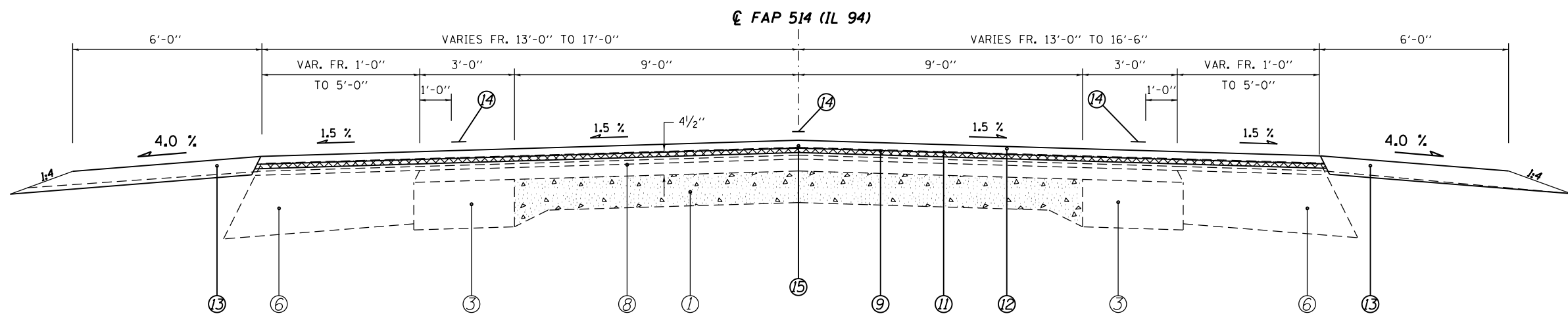
NOT TO SCALE

FILE NAME =	USER NAME = coxjw	DESIGNED -	REVISED -	STATE OF ILLINOIS DEPARTMENT OF TRANSPORTATION	TYPICAL SECTIONS			F.A.P. RTE.	SECTION	COUNTY	TOTAL SHEETS	SHEET NO.
pw:\planroom.dot.illinois.gov\PIDOT\Documents\IDOT Offices\District 6\Projects\0672001\Drawings\CABsheet\0672001-sh1-typical.dwg		CHECKED - JWC	REVISED -		SCALE: NTS	SHEET 1	OF 3 SHEETS	STA.	TO STA.	HANCOCK	29	12
Default	PLOT DATE = 10/16/2019	DATE -	REVISED -							CONTRACT NO. 72G01		
										ILLINOIS FED. AID PROJECT		



- LEGEND**
- ① EXISTING PCC PAVEMENT 9'-6"-9"
 - ② EXISTING CLASS B PATCH 9"
 - ③ EXISTING BITUMINOUS BASE COURSE WIDENING 9"
 - ④ EXISTING BITUMINOUS BASE COURSE 11"
 - ⑤ EXISTING BITUMINOUS BASE COURSE WIDENING 11"
 - ⑥ EXISTING BITUMINOUS SHOULDER 10"
 - ⑦ EXISTING PCC GUTTER, TYPE B
 - ⑧ EXISTING BITUMINOUS OVERLAY
 - ⑨ PROPOSED HOT-MIX ASPHALT SURFACE REMOVAL, 1 1/2"
 - ⑩ PROPOSED HOT-MIX ASPHALT BASE COURSE WIDENING, 9"
 - ⑪ PROPOSED HOT-MIX ASPHALT BINDER COURSE, IL-9.5FG, N50 1 1/4"
 - ⑫ PROPOSED HOT-MIX ASPHALT SURFACE COURSE, MIX "C", N50 1 1/2"
 - ⑬ PROPOSED AGGREGATE SHOULDERS, TYPE B
 - ⑭ PROPOSED PAINT PAVEMENT MARKING LINE 5"
 - ⑮ PROPOSED LONGITUDINAL JOINT SEALANT
 - ⑯ PROPOSED SUB-BASE GRANULAR MATERIAL, TYPE A 4"
 - ⑰ PROPOSED GUTTER REMOVAL
 - ⑱ PROPOSED CONCRETE GUTTER, TYPE A
 - ⑲ PROPOSED DRAINAGE DITCH FOR UNDERDRAINS W=1' - D=2.5'
 - ⑳ PROPOSED PIPE UNDERDRAINS, TYPE 2, 6"

STA. 240+10.00 TO STA. 244+90.00 [480.00']	STA. 342+60.00 TO STA. 352+40.00 [980.00']
STA. 259+10.00 TO STA. 261+90.00 [280.00']	STA. 385+60.00 TO STA. 388+40.00 [280.00']
STA. 290+30.00 TO STA. 294+70.00 [440.00']	STA. 390+60.00 TO STA. 395+40.00 [480.00']
STA. 298+10.00 TO STA. 303+30.00 [520.00']	STA. 415+85.00 TO STA. 420+65.00 [480.00']
STA. 314+60.00 TO STA. 318+40.00 [380.00']	STA. 429+10.00 TO STA. 433+88.79 [478.79']
STA. 325+60.00 TO STA. 329+40.00 [380.00']	

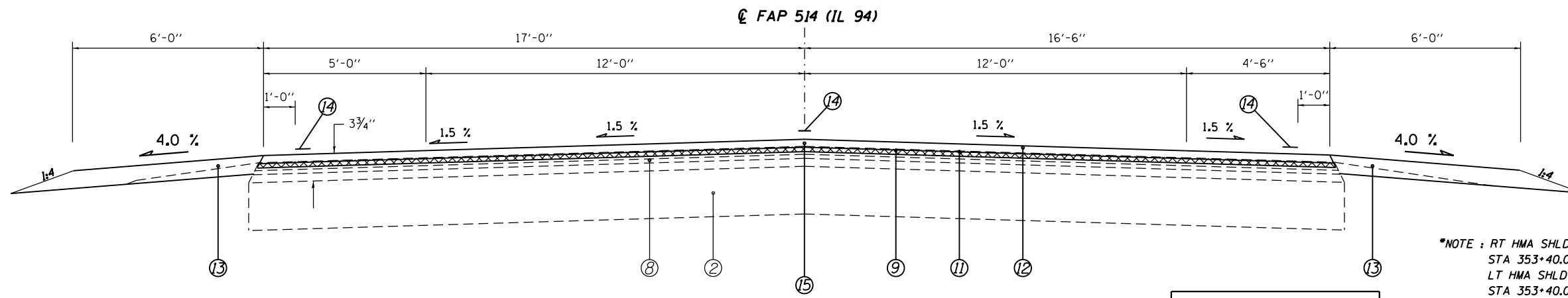


STA. 320+10.00 TO STA. 324+35.00 [361.00']

S.N. 034-2010
 @ STA. 322+24.00

NOT TO SCALE

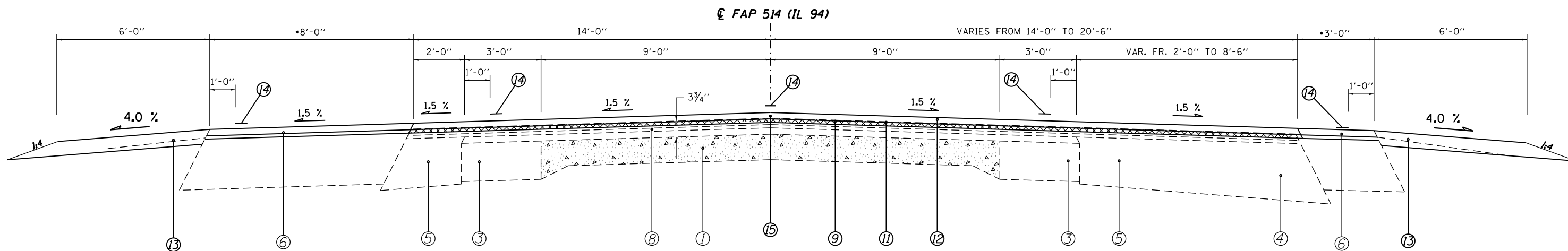
FILE NAME =	USER NAME = coxjw	DESIGNED - JWC	REVISED -	STATE OF ILLINOIS DEPARTMENT OF TRANSPORTATION	TYPICAL SECTIONS			F.A.P. RTE.	SECTION	COUNTY	TOTAL SHEETS	SHEET NO.
pw:\planroom.dot.illinois.gov\PIDOT\Documents\IDOT Offices\District 6\Projects\067200\IDOT\Drawings\CABSheet\067200-sh-typical.dwg		CHECKED - JWC	REVISED -		514	.	HANCOCK	29	13			
Default	PLOT SCALE = 100.0000' / 1" / 1" / 1"	DATE -	REVISED -		CONTRACT NO. 72G01			ILLINOIS FED. AID PROJECT				
	PLOT DATE = 10/16/2019				SCALE: NTS	SHEET 2	OF 3 SHEETS	STA.	TO STA.	(106)RS-7, (107)RS-6, BDR		



STA. 321+90.00 TO STA. 322+54.00 [64.00']

S.N. 034-2010
 STA. 321+95.00

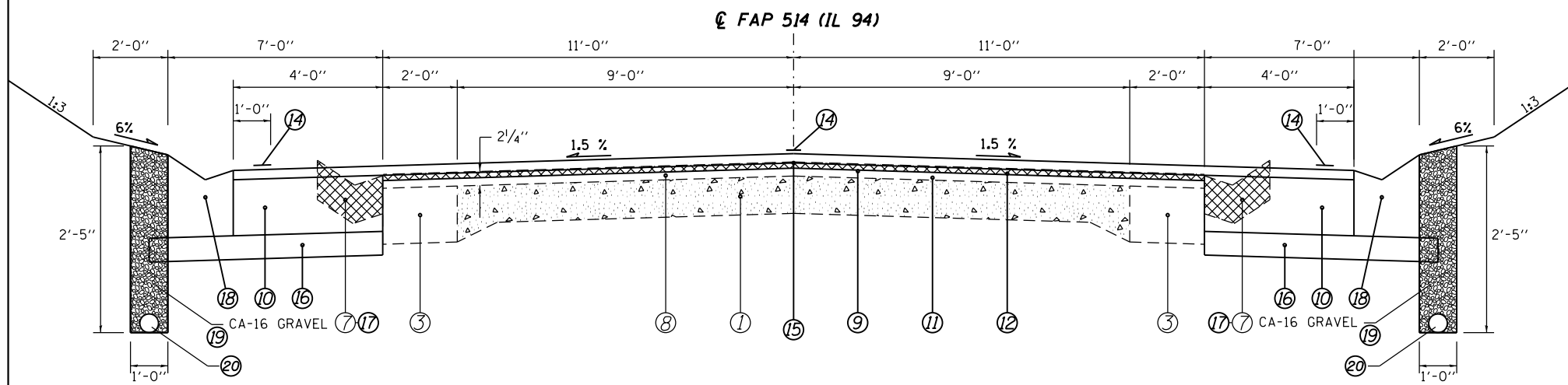
*NOTE: RT HMA SHLD VARIES FROM 1' TO 3' FROM STA 353+40.00 TO STA 354+50.00.
 LT HMA SHLD VARIES FROM 1' TO 8' FROM STA 353+40.00 TO STA 354+32.00 AND 8' TO 1' FROM STA 358+00.00 TO STA 358+78.00.



BRIDGE OMISSION
 S.N.: 034-0501
 STA 355+57.88
 STA 357+12.70

STA. 353+36.06 TO STA. 355+57.88 [221.82']
 STA. 357+12.70 TO STA. 358+78.00 [165.30']

- LEGEND**
- ① EXISTING PCC PAVEMENT 9'-6"-9"
 - ② EXISTING CLASS B PATCH 9"
 - ③ EXISTING BITUMINOUS BASE COURSE WIDENING 9"
 - ④ EXISTING BITUMINOUS BASE COURSE 11"
 - ⑤ EXISTING BITUMINOUS BASE COURSE WIDENING 11"
 - ⑥ EXISTING BITUMINOUS SHOULDER 10"
 - ⑦ EXISTING PCC GUTTER, TYPE B
 - ⑧ EXISTING BITUMINOUS OVERLAY
 - ⑨ PROPOSED HOT-MIX ASPHALT SURFACE REMOVAL, 1 1/2"
 - ⑩ PROPOSED HOT-MIX ASPHALT BASE COURSE WIDENING, 9"
 - ⑪ PROPOSED HOT-MIX ASPHALT BINDER COURSE, IL-9.5FG, N50 1 1/4"
 - ⑫ PROPOSED HOT-MIX ASPHALT SURFACE COURSE, MIX "C", N50 1 1/2"
 - ⑬ PROPOSED AGGREGATE SHOULDERS, TYPE B
 - ⑭ PROPOSED PAINT PAVEMENT MARKING LINE 5"
 - ⑮ PROPOSED LONGITUDINAL JOINT SEALANT
 - ⑯ PROPOSED SUB-BASE GRANULAR MATERIAL, TYPE A 4"
 - ⑰ PROPOSED GUTTER REMOVAL
 - ⑱ PROPOSED CONCRETE GUTTER, TYPE A
 - ⑲ PROPOSED DRAINAGE DITCH FOR UNDERDRAINS W=1' - D=2.5'
 - ⑳ PROPOSED PIPE UNDERDRAINS, TYPE 2, 6"



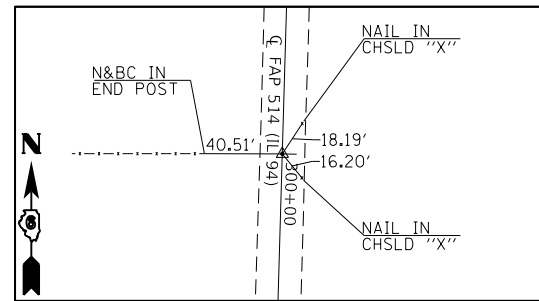
**NOTE: SEE CROSS SECTIONS FOR DETAILS

STA. 358+78.00 TO STA. 362+52.85 [374.85']

**NOTE: SEE CROSS SECTIONS FOR DETAILS

NOT TO SCALE

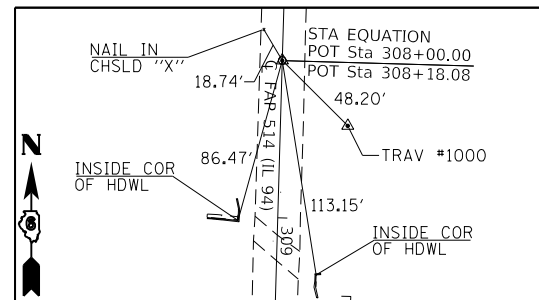
FILE NAME =	USER NAME = coxjw	DESIGNED - JWC	REVISED -	STATE OF ILLINOIS DEPARTMENT OF TRANSPORTATION	TYPICAL SECTIONS			F.A.P. RTE.	SECTION	COUNTY	TOTAL SHEETS	SHEET NO.
pw:\planroom.dot.illinois.gov\PIDOT\Documents\IDOT Offices\District 6\Projects\0672001\Drawings\CABSheet\0672001-sh-typical.dwg		CHECKED - JWC	REVISED -		514	.	HANCOCK	29	14			
Default	PLOT SCALE = 100.0000' / 1in.	DATE -	REVISED -		SCALE: NTS SHEET 3 OF 3 SHEETS STA. TO STA.			CONTRACT NO. 72G01				
	PLOT DATE = 10/16/2019							ILLINOIS FED. AID PROJECT				



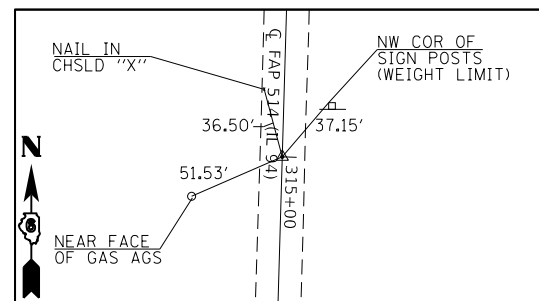
IL 94 - POT STA 300+00.00 PK NAIL N & BC

BM 22 CHSLD "□" IN SE CORNER OF BRIDGE
SN 034-0501 AT STA 356+84.00, 22.80' LT
NAVD88 ELEV= 653.365'

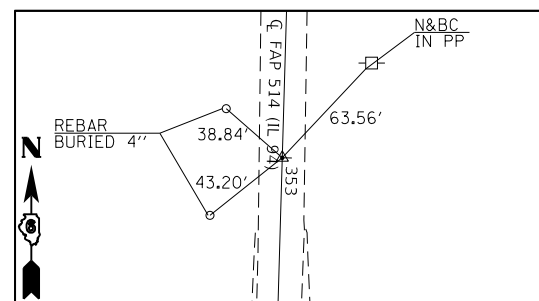
BM 21 SET CHSLD "□" S END E HEADWALL
OF CULVERT UNDER IL 94 AT APPROX
STA 365+65.00 NAVD88 ELEV 654.773'



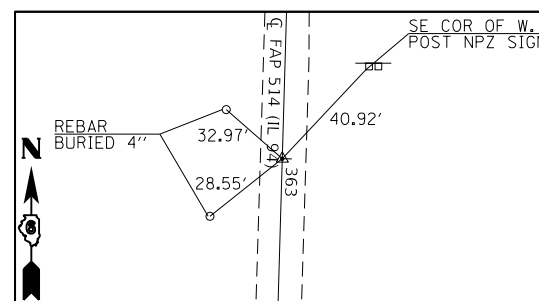
IL 94 - POT STA EQ STA 308+00.00 BK
STA 308+18.08 AH PK N&BC



IL 94 - POT STA 315+00.00 PK N&BC



IL 94 - POT STA 353+00.00 N&BC w/CHSLD "X"



IL 94 - POT STA 363+00.00 N&BC w/CHSLD "X"

MODEL: Default
 FILE: h:\mhc\p\suplanroom.d\illinois.gov\PWIDOT\Documents\DOT_Offices\District_6\Projects\ID672601\CADD\sta\CAD\sheets\ID672601-shc-ATB.dgn

**STATE OF ILLINOIS
DEPARTMENT OF TRANSPORTATION**

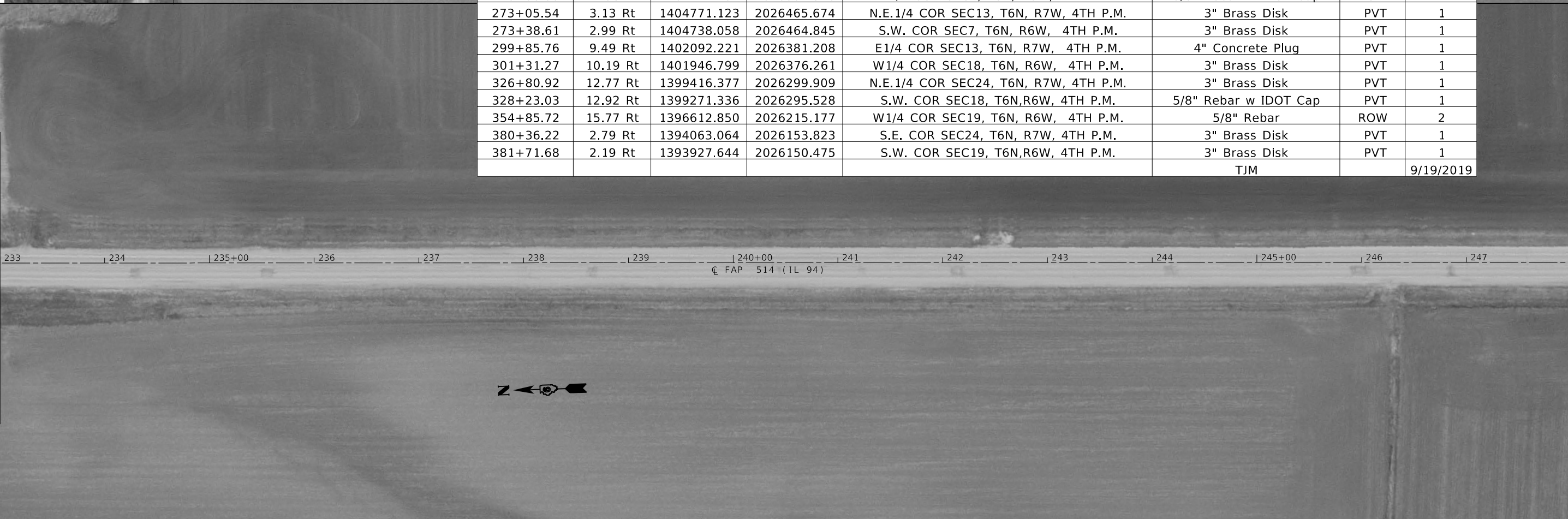
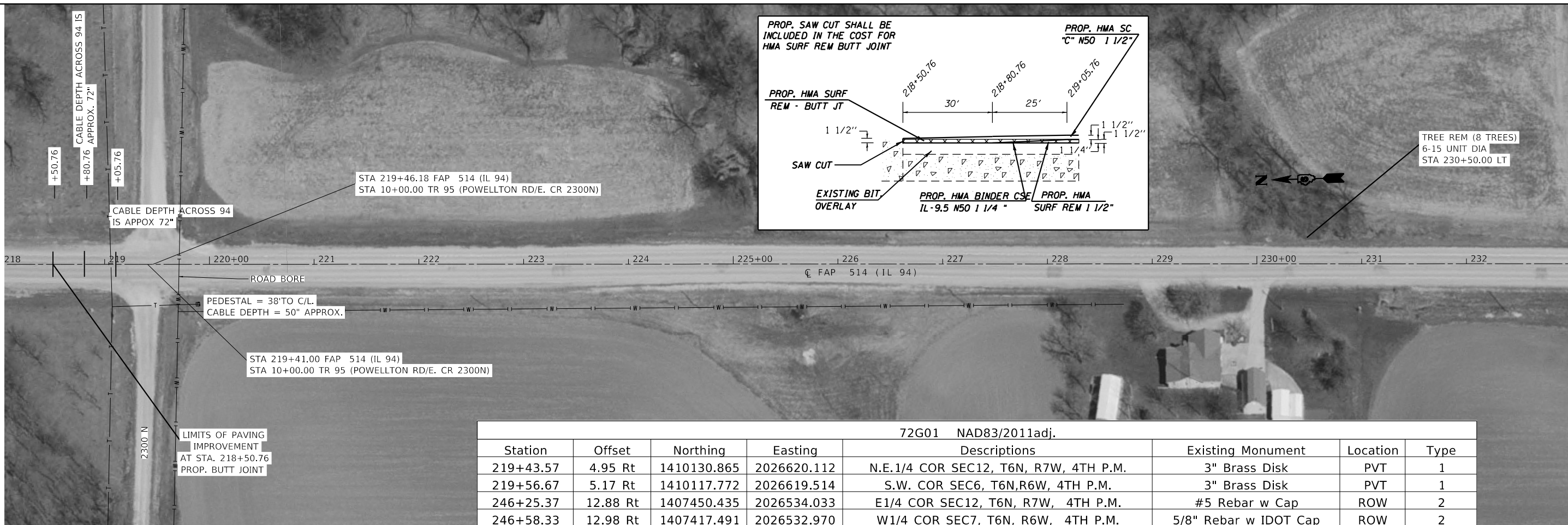
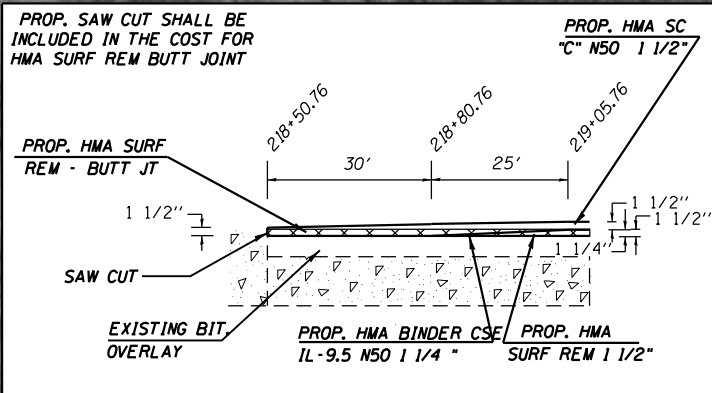
ALIGNMENT TIES AND BENCH MARKS

USER NAME = coxte	DESIGNED -	REVISED -
	DRAWN -	REVISED -
PLOT SCALE = 100.0000' / in.	CHECKED -	REVISED -
PLOT DATE = 10/17/2019	DATE -	REVISED -

SCALE: SHEET OF SHEETS STA. TO STA.

F.A.P. RTE.	SECTION	COUNTY	TOTAL SHEETS	SHEET NO.
514	*	HANCOCK	29	15
CONTRACT NO. 72G01				
		ILLINOIS	FED. AID PROJECT	

(106)RS-7, (107)RS-6, BDR



72G01 NAD83/2011adj.							
Station	Offset	Northing	Easting	Descriptions	Existing Monument	Location	Type
219+43.57	4.95 Rt	1410130.865	2026620.112	N.E.1/4 COR SEC12, T6N, R7W, 4TH P.M.	3" Brass Disk	PVT	1
219+56.67	5.17 Rt	1410117.772	2026619.514	S.W. COR SEC6, T6N,R6W, 4TH P.M.	3" Brass Disk	PVT	1
246+25.37	12.88 Rt	1407450.435	2026534.033	E1/4 COR SEC12, T6N, R7W, 4TH P.M.	#5 Rebar w Cap	ROW	2
246+58.33	12.98 Rt	1407417.491	2026532.970	W1/4 COR SEC7, T6N, R6W, 4TH P.M.	5/8" Rebar w IDOT Cap	ROW	2
273+05.54	3.13 Rt	1404771.123	2026465.674	N.E.1/4 COR SEC13, T6N, R7W, 4TH P.M.	3" Brass Disk	PVT	1
273+38.61	2.99 Rt	1404738.058	2026464.845	S.W. COR SEC7, T6N, R6W, 4TH P.M.	3" Brass Disk	PVT	1
299+85.76	9.49 Rt	1402092.221	2026381.208	E1/4 COR SEC13, T6N, R7W, 4TH P.M.	4" Concrete Plug	PVT	1
301+31.27	10.19 Rt	1401946.799	2026376.261	W1/4 COR SEC18, T6N, R6W, 4TH P.M.	3" Brass Disk	PVT	1
326+80.92	12.77 Rt	1399416.377	2026299.909	N.E.1/4 COR SEC24, T6N, R7W, 4TH P.M.	3" Brass Disk	PVT	1
328+23.03	12.92 Rt	1399271.336	2026295.528	S.W. COR SEC18, T6N,R6W, 4TH P.M.	5/8" Rebar w IDOT Cap	PVT	1
354+85.72	15.77 Rt	1396612.850	2026215.177	W1/4 COR SEC19, T6N, R6W, 4TH P.M.	5/8" Rebar	ROW	2
380+36.22	2.79 Rt	1394063.064	2026153.823	S.E. COR SEC24, T6N, R7W, 4TH P.M.	3" Brass Disk	PVT	1
381+71.68	2.19 Rt	1393927.644	2026150.475	S.W. COR SEC19, T6N,R6W, 4TH P.M.	3" Brass Disk	PVT	1
					TJM		9/19/2019

MATCH LINE STA 233+00.00

MATCH LINE STA 233+00.00

MATCH LINE STA 248+00.00

MATCH LINE STA 248+00.00



MATCH LINE STA 263+00.00

MATCH LINE STA 263+00.00



MATCH LINE STA 278+00.00

FILE NAME =	USER NAME = coxjm	DESIGNED - JWC	REVISED -
pw:\planroom.dot.illinois.gov\PWIDOT\Documents\IDOT Offices\District 6\Projects\0672001\DRAWING\CABsheet\0672001-sht-plan1.dgn		REVISIONS	REVISED -
Default	PLOT SCALE = 100.0000' / in.	CHECKED - JWC	REVISED -
	PLOT DATE = 10/16/2019	DATE -	REVISED -

**STATE OF ILLINOIS
DEPARTMENT OF TRANSPORTATION**

PLAN SHEETS

SCALE: 50 SHEET 2 OF 6 SHEETS STA. 248+00.00 TO STA. 278+00.00

F.A.P. RTE.	SECTION	COUNTY	TOTAL SHEETS	SHEET NO.
514	•	HANCOCK	29	17
ILLINOIS FED. AID PROJECT			CONTRACT NO. 72G01	



FILE NAME =	USER NAME = coxjw	DESIGNED - JWC	REVISED -
p:\planroom\dot.illinois.gov\PIDOT\Documents\IDOT Offices\District 6\Projects\0672601\Drawings\CABsheet\0672601-sht-plan1.dgn		DRAWN - JWC	REVISED -
Default	PLOT SCALE = 100.0000' / in.	CHECKED - JWC	REVISED -
	PLOT DATE = 10/16/2019	DATE -	REVISED -

**STATE OF ILLINOIS
DEPARTMENT OF TRANSPORTATION**

PLAN SHEETS			
SCALE: 50	SHEET 3	OF 6 SHEETS	STA. 278+00.00 TO STA. 323+00.00

F.A.P. RTE.	SECTION	COUNTY	TOTAL SHEETS	SHEET NO.
514	•	HANCOCK	29	18
CONTRACT NO. 72G01			ILLINOIS FED. AID PROJECT	



MATCH LINE STA 323+00.00

MATCH LINE STA 338+00.00



MATCH LINE STA 338+00.00

MATCH LINE STA 353+00.00

FILE NAME = p:\planroom\dot.illinois.gov\PIDOT\Documents\IDOT Offices\District 6\Projects\0672601\DRAWING\CABSheet\0672601-sht-plan1.dgn	USER NAME = coxjw	DESIGNED - JWC	REVISED -	STATE OF ILLINOIS DEPARTMENT OF TRANSPORTATION	PLAN SHEETS			F.A.P. RTE.	SECTION	COUNTY	TOTAL SHEETS	SHEET NO.
	PLOT SCALE = 100.0000' / in.	CHECKED - JWC	REVISED -					514	.	HANCOCK	29	19
Default	PLOT DATE = 10/16/2019	DATE -	REVISED -	SCALE: 50 SHEET 4 OF 6 SHEETS STA. 323+00.00 TO STA. 353+00.00			ILLINOIS FED. AID PROJECT CONTRACT NO. 72G01					



FILE NAME =	USER NAME = coxjw	DESIGNED - JWC	REVISED -
p:\planroom\dot.illinois.gov\PIWIDOT\Documents\IDOT Offices\District 6\Projects\067260\DRAWING\CABSheet\067260-shr-plan1.dgn		DRAWN - JWC	REVISED -
Default	PLOT SCALE = 100.0000' / in.	CHECKED - JWC	REVISED -
	PLOT DATE = 10/16/2019	DATE -	REVISED -

**STATE OF ILLINOIS
DEPARTMENT OF TRANSPORTATION**

PLAN SHEETS

SCALE: 50 SHEET 5 OF 6 SHEETS STA. 353+00.00 TO STA. 398+00.00

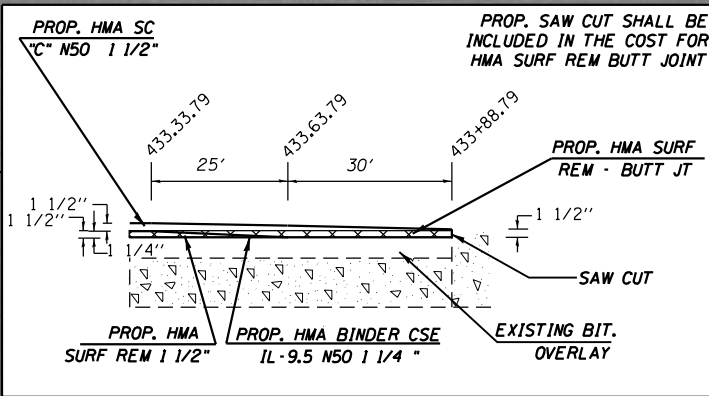
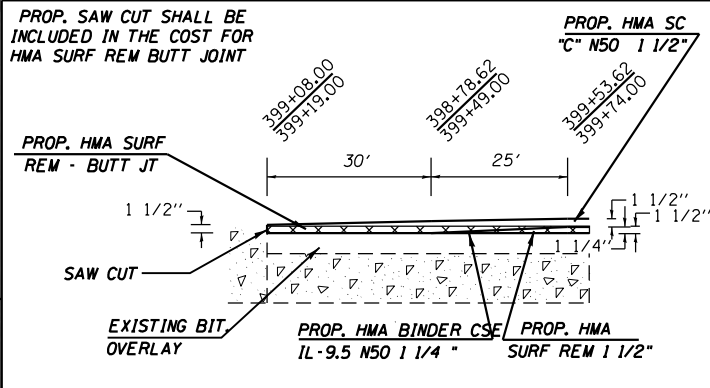
F.A.P. RTE.	SECTION	COUNTY	TOTAL SHEETS	SHEET NO.
514	•	HANCOCK	29	20
CONTRACT NO. 72G01			ILLINOIS FED. AID PROJECT	



*NOTE:
MILLING AND PAVING AT THE RAILROAD BUTT JOINT
MAY NEED TO BE ADJUSTED TO THE EXISTING ELEVATION
OF THE NEW TRACKS TO THE SATISFACTION OF THE
ENGINEER.

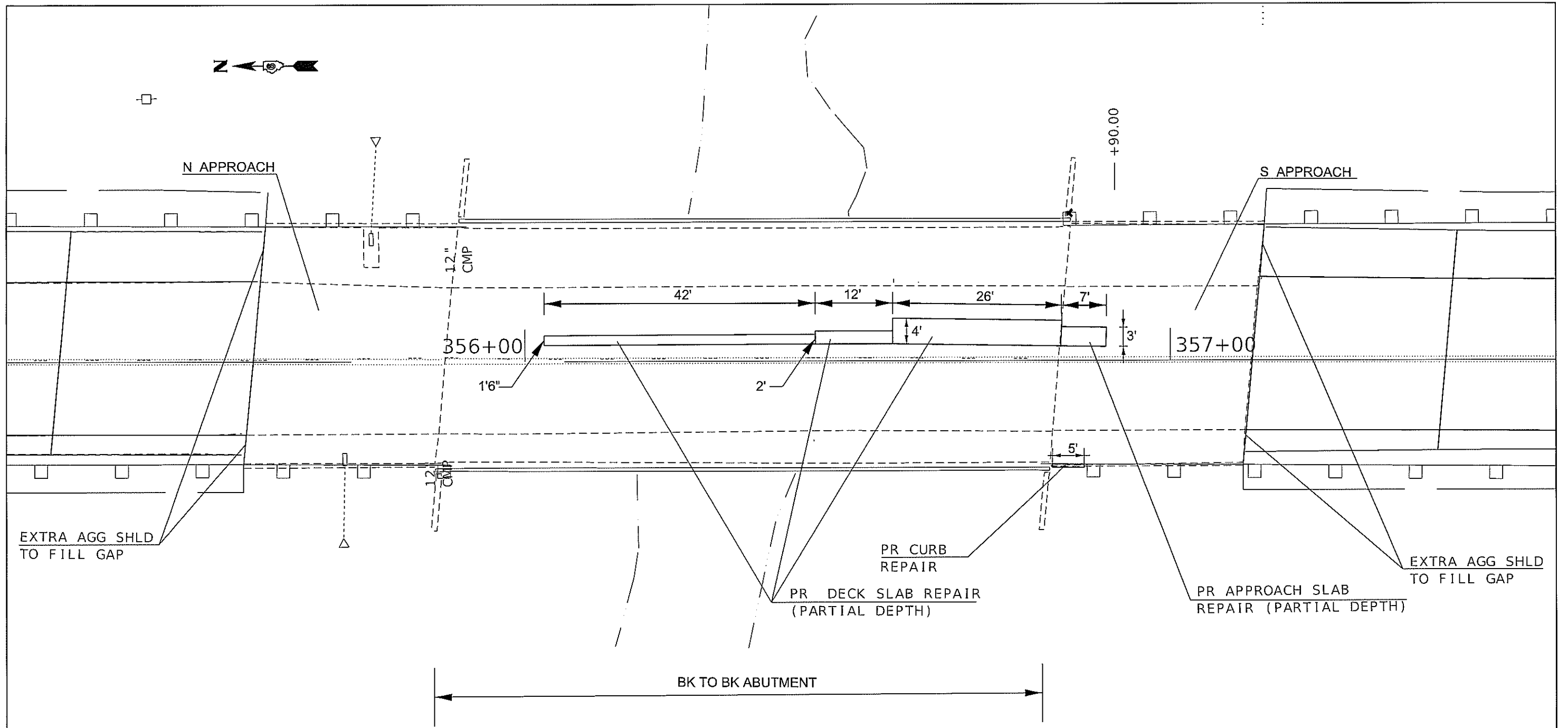
*FUTURE RR SAFETY PROJ
TO BE DONE BY OTHERS

R.R. OMISSION:
KEOKUK JUNCTION R.R.
STA. 399+08+62 TO STA. 39+19.00



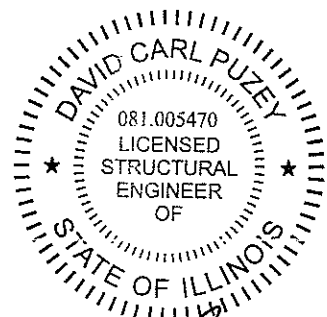
LIMITS OF PAVING
IMPROVEMENT
AT STA. 433+88.90
PROP. BUTT JOINT

FILE NAME =	USER NAME = coxjw	DESIGNED - JWC	REVISED -	STATE OF ILLINOIS DEPARTMENT OF TRANSPORTATION	PLAN SHEETS			F.A.P. RTE.	SECTION	COUNTY	TOTAL SHEETS	SHEET NO.
pw:\planroom\dot.illinois.gov\PIWIDOT\Documents\DOT Offices\District 6\Projects\0672601\DRAWING\CABSheet\0672601-sht-plan1.dgn		CHECKED - JWC	REVISED -		514	.	HANCOCK	29	21			
Default	PLOT SCALE = 100.0000' / in.	DATE -	REVISED -		SCALE: 50 SHEET 6 OF 6 SHEETS STA. 398+00.00 TO STA. 443+00.00			CONTRACT NO. 72601				
	PLOT DATE = 10/16/2019				ILLINOIS FED. AID PROJECT		(106)RS-7, (107)RS-6, BDR					



BILL OF MATERIALS - SN. 034-0501

PAY ITEM	DESCRIPTION	UNIT	TOTAL QTY
Z0001600	APPROACH SLAB REPAIR (PARTIAL DEPTH)	SQ YD	3.00
Z0016300	DECK SLAB REPAIR (PARTIAL DEPTH)	SQ YD	22.00
Z0012500	CURB REPAIR	FOOT	5.00

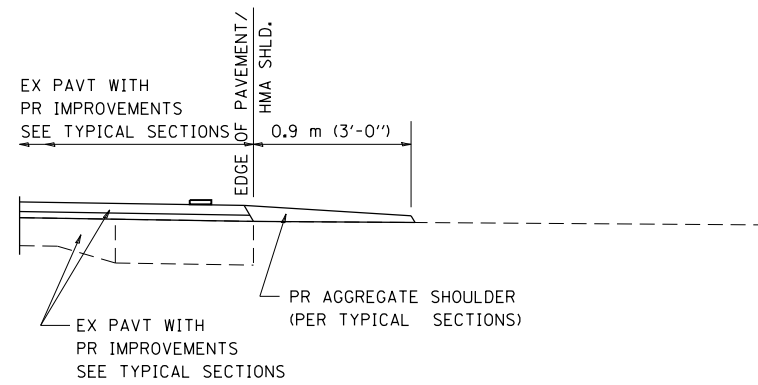


David Carl Puzey 11/26/19
Expires 11/30/20

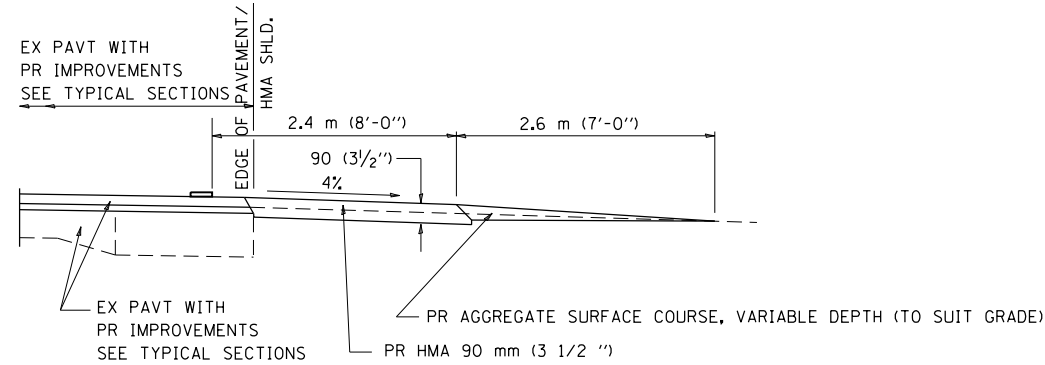
GENERAL NOTES:

1. THE PATCH SIZES AND LOCATIONS SHOWN ON THE PLAN SHEETS ARE ESTIMATED. THE FINAL PATCH LOCATIONS SHALL BE DETERMINED BY THE ENGINEER IN THE FIELD

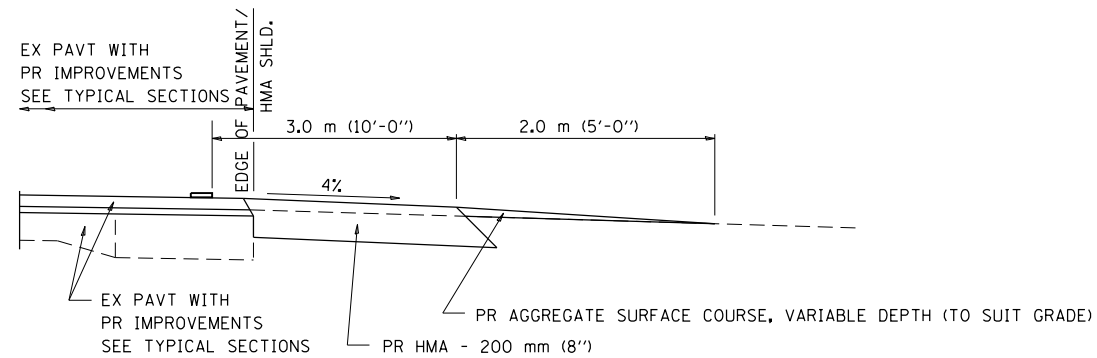
FILE NAME =	USER NAME = caxta	DESIGNED - JWC	REVISED -	STATE OF ILLINOIS DEPARTMENT OF TRANSPORTATION	PATCHING DETAIL 034-0501			F.A.P. RTE.	SECTION	COUNTY	TOTAL SHEETS	SHEET NO.	
Default	Default	CHECKED - JWC	REVISED -		SCALE:	SHEET 1 OF 2 SHEETS	STA.	TO STA.	514	*	HANCOCK	29	22
		DATE -	REVISED -								CONTRACT NO. 72G01		



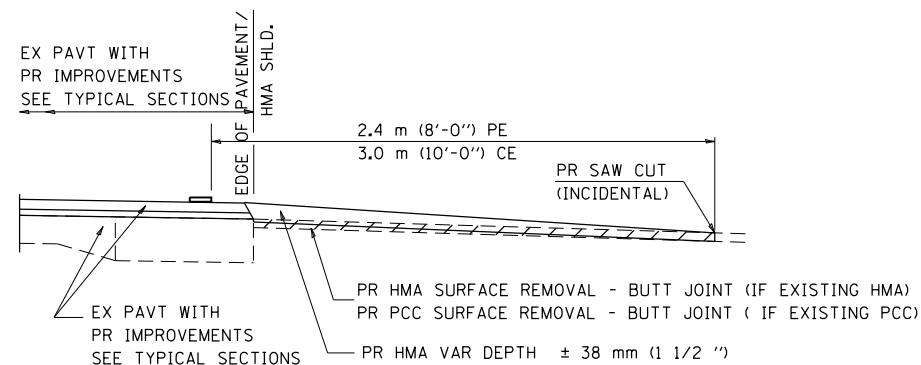
SECTION A-A FOR EX EARTH/ AGGREGATE FE



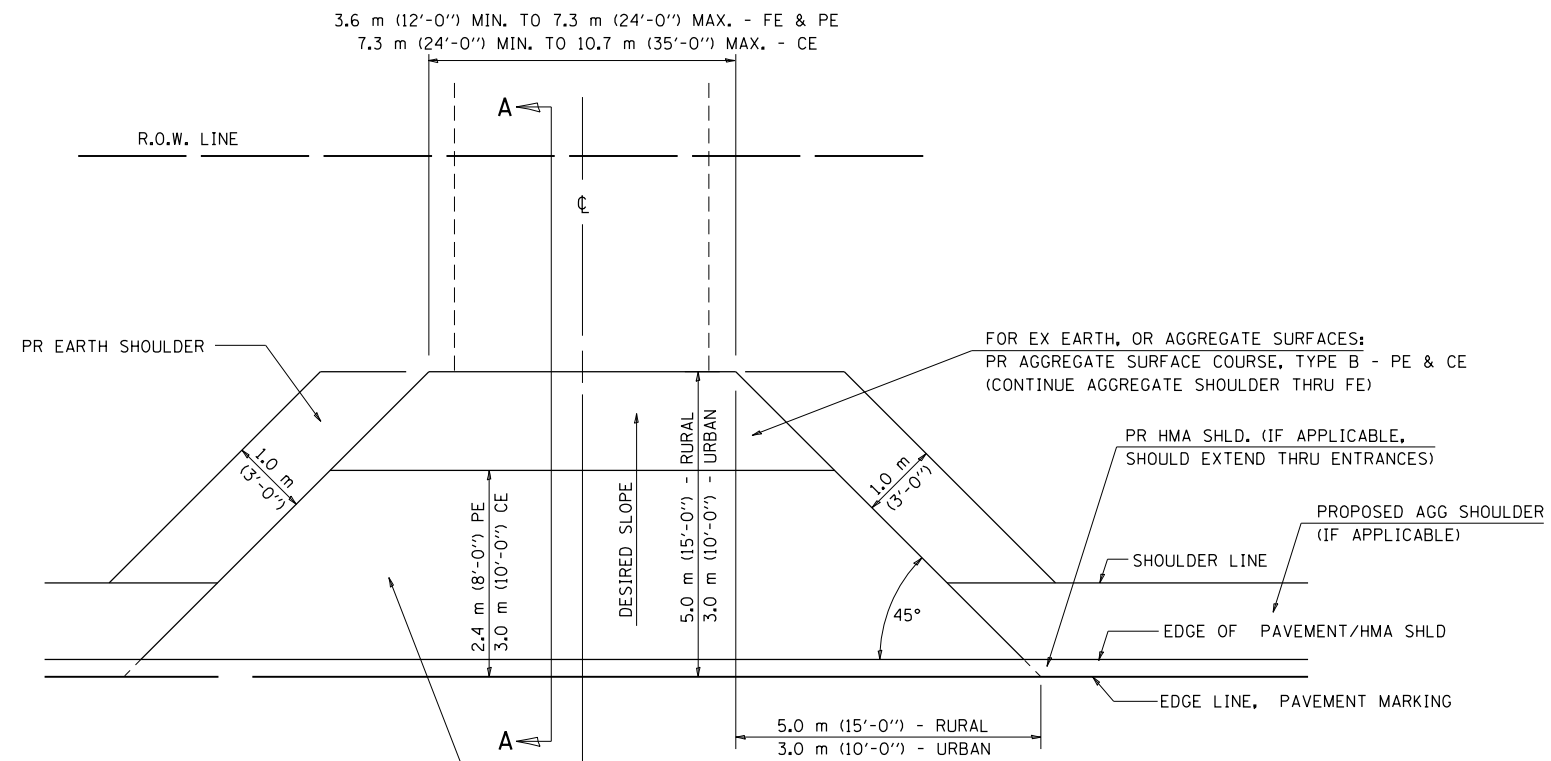
SECTION A-A FOR EX EARTH/AGGREGATE PE



SECTION A-A FOR EX EARTH/AGGREGATE CE & SIDE ROAD



SECTION A-A FOR EX HMA/ PC CONCRETE PE, CE & SIDE ROAD



FOR EX EARTH OR AGGREGATE SURFACES:
 PR HMA SURFACE REMOVAL (IF APPLICABLE)
 PR AGGREGATE SHOULDER THRU - FE
 PR HMA CONCRETE 90 mm (3 1/2 ") - PE
 PR HMA CONCRETE 200mm (8") - CE

FOR EX HMA CONCRETE SURFACES:
 PR HMA SURFACE REMOVAL-BUTT JOINT

FOR EX PCC SURFACES:
 PR PCC SURFACE REMOVAL-BUTT JOINT

GENERAL NOTES:

THE RESIDENT ENGINEER WILL DETERMINE THE EXACT TYPE OF IMPROVEMENT TO BE COMPLETED FOR ALL ENTRANCES, SIDEROADS AND MAILBOX TURNOUTS ON THIS PROJECT.

THE PLAN DETAILS AND SCHEDULES SHOULD BE USED AS A GUIDE FOR THE ENGINEER TO IMPLEMENT THE FINAL DESIGN. THE ENGINEER MAY DECIDE TO SALVAGE PORTIONS OF THE EXISTING ENTRANCE PAVEMENT STRUCTURE; THEREFORE, REDUCING PAY ITEM QUANTITIES. NO ADDITIONAL PAYMENT WILL BE ALLOWED FOR THIS REDUCTION IN QUANTITIES.

ANY WORK THE ENGINEER REQUIRES WHICH IS NOT COVERED BY A PAY ITEM CONTAINED IN THE PLANS WILL BE PAID FOR IN ACCORDANCE WITH ARTICLE 109.04 OF THE STANDARD SPECIFICATIONS.

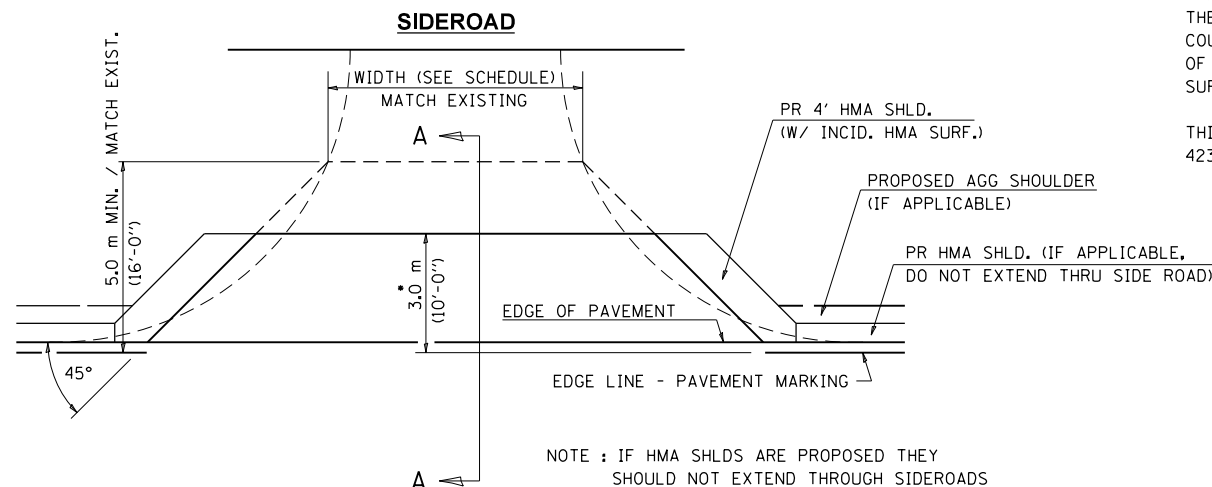
HMA CONCRETE REQUIRED TO CONSTRUCT THE ENTRANCES SHALL BE IN ACCORDANCE WITH THE APPLICABLE PORTIONS OF SECTION 406 AND 408 OF THE STANDARD SPECIFICATIONS AND AS DIRECTED BY THE ENGINEER.

WHEN THE HMA CONCRETE PROPOSED FOR THE IMPROVEMENT IS THICKER THAN 75 mm (3 INCHES) AND REQUIRE PLACEMENT IN MORE THAN ONE LIFT. THE BOTTOM LIFT(S) SHALL MEET THE REQUIREMENTS OF HMA BASE COURSE IN SECTION 406 OF THE STANDARD SPECIFICATIONS AND THE TOP LIFT OF 50 mm (2 INCHES) SHALL MEET THE REQUIREMENTS OF HMA CONCRETE SURFACE COURSE, SUPERPAVE.

THIS WORK WILL BE PAID FOR IN ACCORDANCE WITH SECTIONS 351, 358, 408, 423 AND 440 OF THE STANDARD SPECIFICATIONS.

ALL DIMENSIONS ARE IN MILLIMETERS (INCHES) UNLESS OTHERWISE SHOWN.

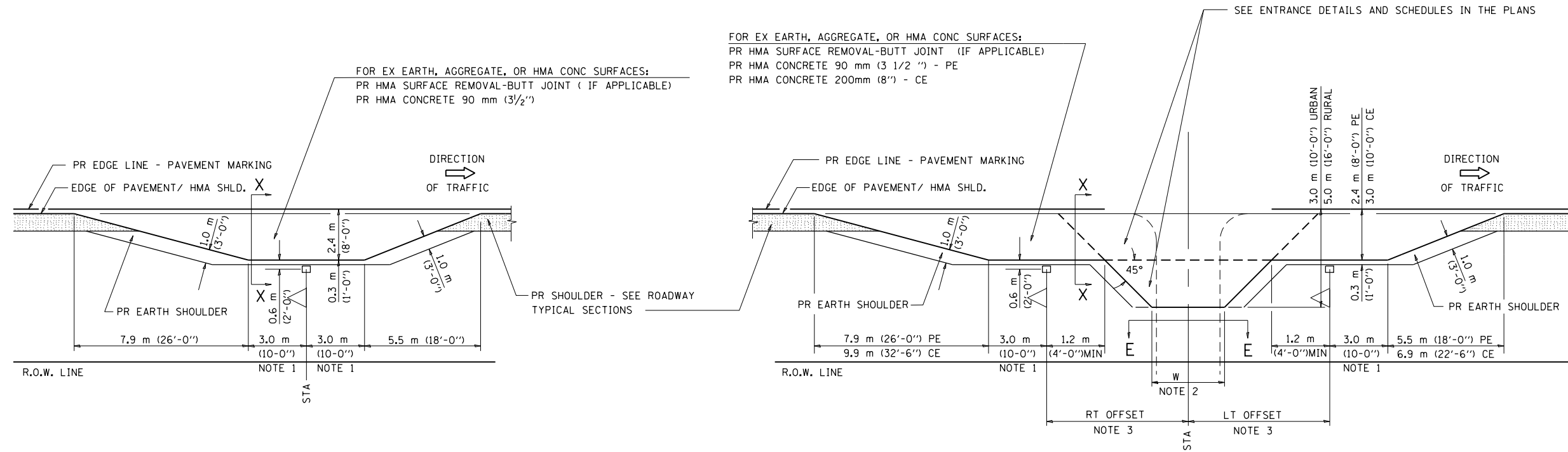
- THE PROPOSED HMA IMPROVEMENT ON THE SIDE ROAD SHOULD EXTEND TO THE EXISTING BUTT JOINT WITH A MINIMUM OF 10' IF NO BUTT JOINT EXIST, OR TO THE BUTT JOINT IF BUTT JOINT IS > 10'.



NOTE : IF HMA SHLDS ARE PROPOSED THEY SHOULD NOT EXTEND THROUGH SIDEROADS

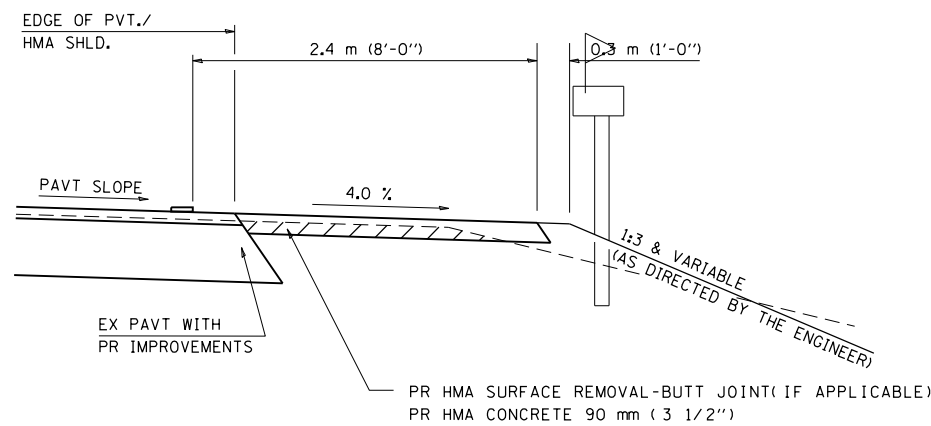
FILE NAME =	USER NAME = coxjw	DESIGNED - JWC	REVISED -	STATE OF ILLINOIS DEPARTMENT OF TRANSPORTATION	DIST. 6 DETAILS FOR RURAL/URBAN ENT., MAILBOX TURNOUT & SIDEROAD W/O CONC, GUTTER (3P-PROJ.)	F.A.P. RTE.	SECTION	COUNTY	TOTAL SHEETS	SHEET NO.
pw:\planroom.dot.illinois.gov\PIDOT\Documents\DOT Offices\District 6\Projects\067209\Drawings\CABSheet\067209-shd-details.dwg	DATE = 10/16/2019	CHECKED - JWC	REVISED -			514	.	HANCOCK	29	23
Default		DATE -	REVISED -			CONTRACT NO. 72G01			ILLINOIS FED. AID PROJECT	
						SCALE: SHEET 1 OF 2 SHEETS STA. TO STA.				

DETAILS OF MAILBOX TURNOUTS



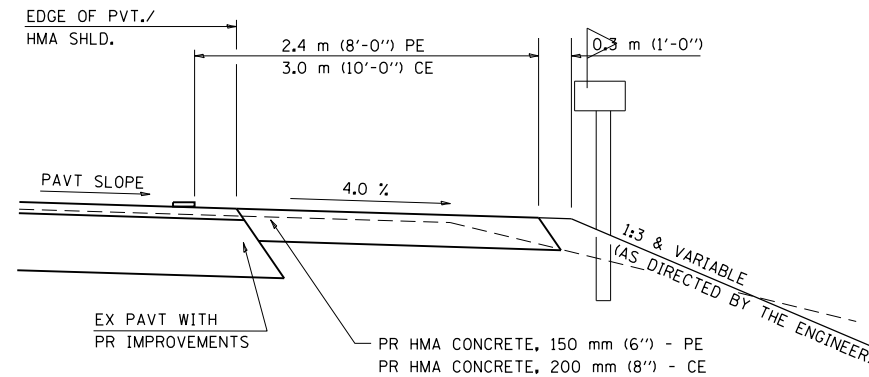
PLAN - MAILBOX TURNOUTS

PLAN - COMBINED MAILBOX TURNOUT WITH TRAILING OR LEADING ENTRANCE



**SECTION X-X THRU MAILBOX TURNOUT
ALSO APPLIES TO MAILBOX TURNOUTS COMBINED WITH
EX EARTH, AGGREGATE, OR HMA PE & FE**

(DETAIL APPLIES WHEN M.B. TURNOUT DOES NOT EXIST.
IF EXISTING, TREAT SAME AS ENTRANCE.)



**SECTION X-X THRU MAILBOX TURNOUT
COMBINED WITH EX HMA CONC & PC CONC PE & CE**

(DETAIL APPLIES WHEN M.B. TURNOUT DOES NOT EXIST.
IF EXISTING, TREAT SAME AS ENTRANCE.)

- NOTE 1 IF MORE THAN ONE MAILBOX IS PRESENT, DIMENSION FROM CENTER OF END MAILBOX.
- NOTE 2 FOR ENTRANCE LAYOUT DIMENSIONS AND SECTIONS A-A & E-E REFER TO THE SCHEDULES IN THE PLANS.
- NOTE 3 BOTH LT OR RT OFFSETS FOR MAILBOX SHOWN USE OFFSET DIMENSION PER SCHEDULE AND REFER TO LAYOUT SHOWN ON THE PLAN.

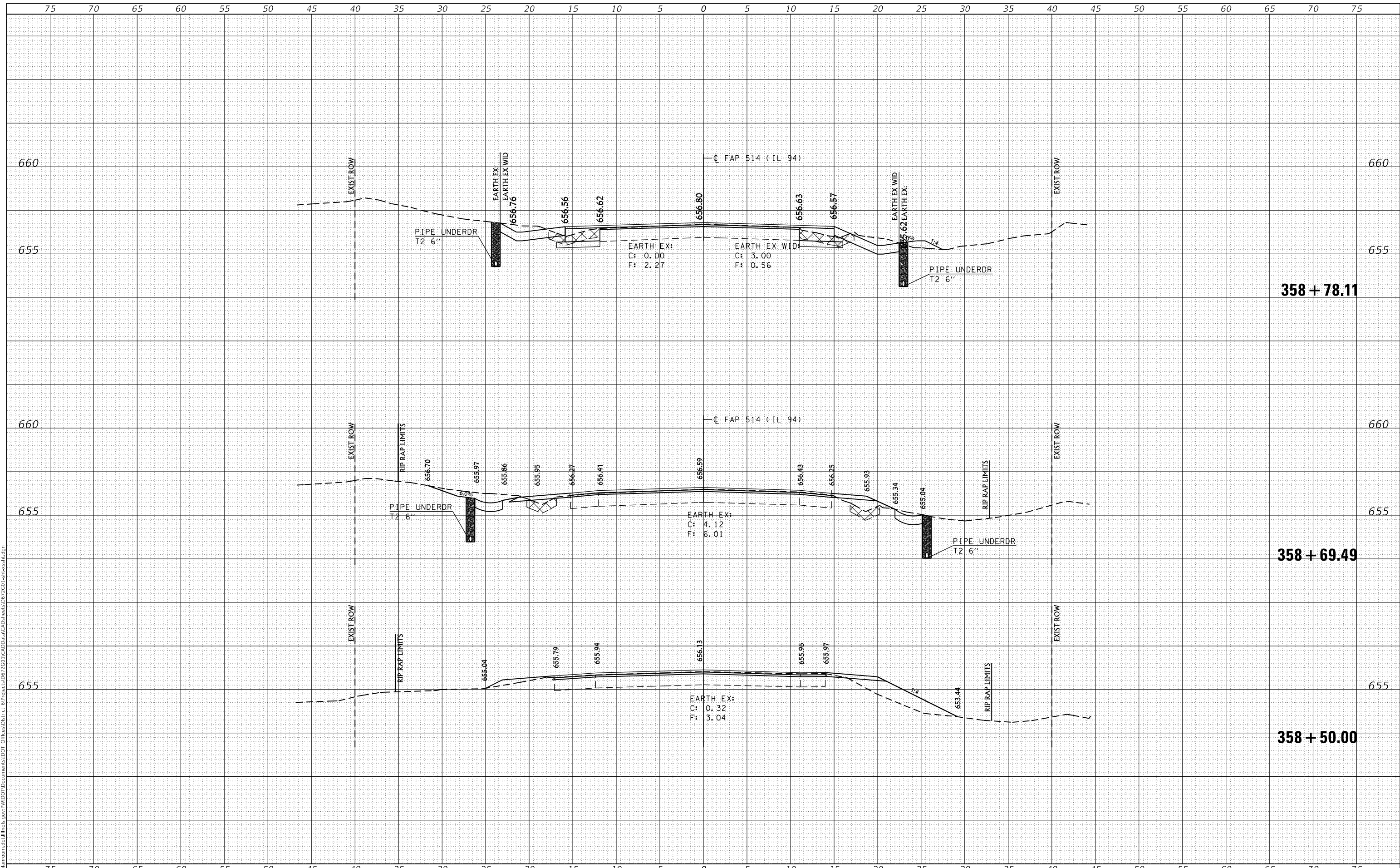
ALL DIMENSIONS ARE IN MILLIMETERS (INCHES)
UNLESS OTHERWISE SHOWN.

FILE NAME =	USER NAME = coxjw	DESIGNED - JWC	REVISED -	STATE OF ILLINOIS DEPARTMENT OF TRANSPORTATION	DIST. 6 DETAILS FOR RURAL/URBAN ENT., MAILBOX TURNOUT & SIDEROAD W/O CONC, GUTTER (3P-PROJ.)	F.A.P. R.T.E.	SECTION	COUNTY	TOTAL SHEETS	SHEET NO.
						514	.	HANCOCK	29	24
						CONTRACT NO. 72G01				
Default	PLOT DATE = 10/16/2019	CHECKED - JWC	REVISIED -	SCALE:	SHEET 2 OF 2 SHEETS	STA.	TO STA.	ILLINOIS FED. AID PROJECT		

DATE	
BY	
SURVEYED	
PLOTTED	
TEMPLATE	
AREAS CHECKED	
FINAL SURVEY	
NOTE BOOK	
NO.	

DATE	
BY	
SURVEYED	
PLOTTED	
TEMPLATE	
AREAS CHECKED	
ORIGINAL SURVEY	
NOTE BOOK	
NO.	

MODEL: Default
 FILE NAME: D:\v\blm\room\ad\illinois\p\p\WIDOT\Documents\DOT - Office\District 6\Project\0272601\CAD\BentCAD\Sheet\0272601.spc-ss-h.dgn



358 + 78.11

358 + 69.49

358 + 50.00

USER NAME = coxjw	DESIGNED - JWC	REVISED -
	DRAWN - JWC	REVISED -
PLOT SCALE = 10.0000' / in.	CHECKED -	REVISED -
PLOT DATE = 10/16/2019	DATE - 9/16/19	REVISED -

**STATE OF ILLINOIS
 DEPARTMENT OF TRANSPORTATION**

IL 94 - CROSS SECTIONS

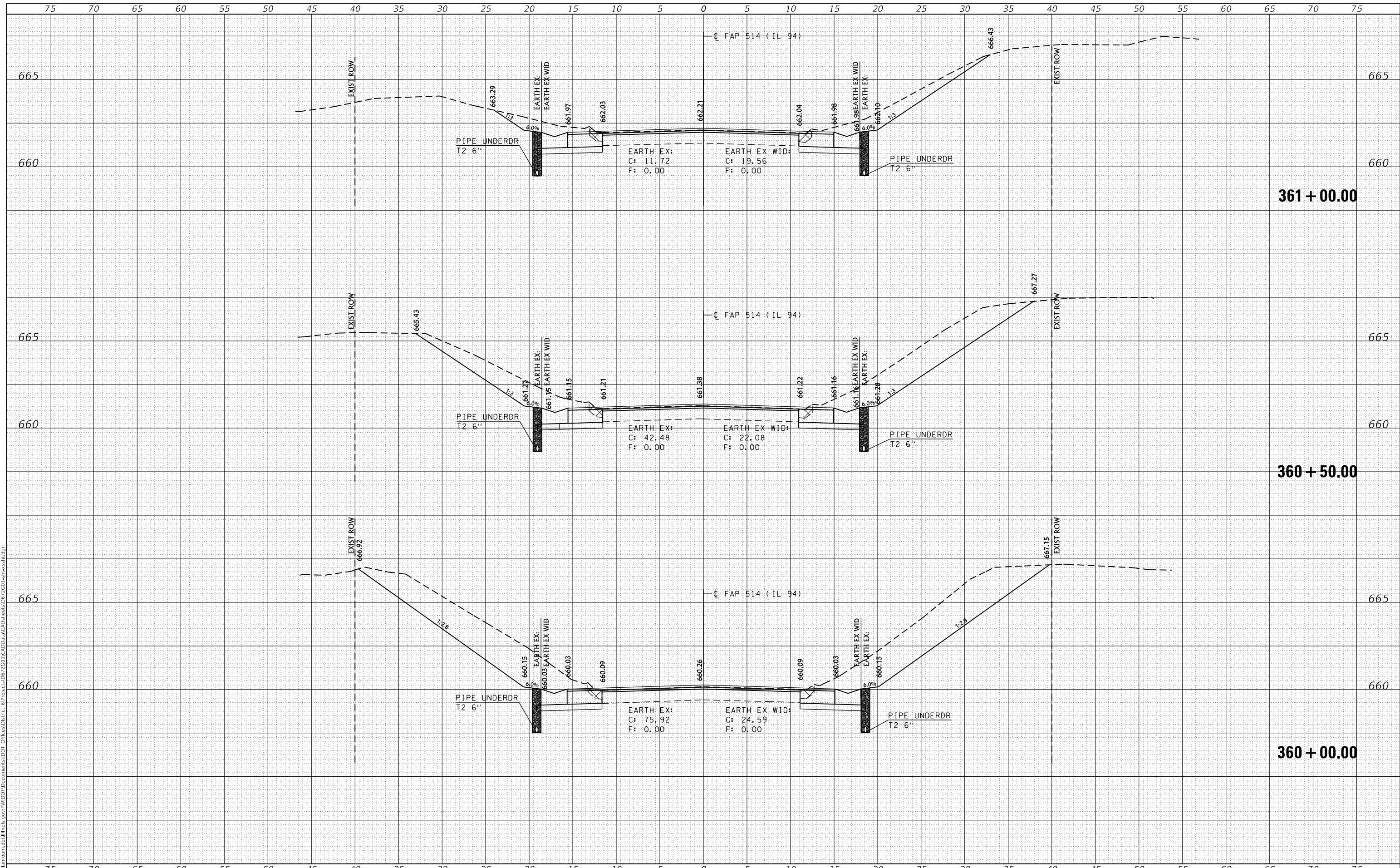
SCALE: 5 SHEET 1 OF 5 SHEETS STA. 358+50.00 TO STA. 358+78.11

F.A.P. RTE.	SECTION	COUNTY	TOTAL SHEETS	SHEET NO.
514	*	HANCOCK	29	25
			CONTRACT NO. 72G01	

DATE	BY
SURVEYED	PLOTTED
NOTE BOOK	TEMPLATE
NO.	AREAS CHECKED

DATE	BY
SURVEYED	PLOTTED
NOTE BOOK	TEMPLATE
NO.	AREAS CHECKED

MODEL: Default
 FILE NAME: D:\vial\mcom.d\all\mcs.p\WIDOT\Documents\DOT_Offices\District_6\Project\027260\CADD\Data\CAD\Sheet\027260_1.spc-ss-h.dgn



USER NAME = coxjw	DESIGNED -	REVISED -
	DRAWN -	REVISED -
PLOT SCALE = 10.0000' / in.	CHECKED -	REVISED -
PLOT DATE = 10/16/2019	DATE -	REVISED -

**STATE OF ILLINOIS
DEPARTMENT OF TRANSPORTATION**

IL 94 - CROSS SECTIONS

SCALE: 5 SHEET 3 OF 5 SHEETS STA. 360+00.00 TO STA. 361+00.00

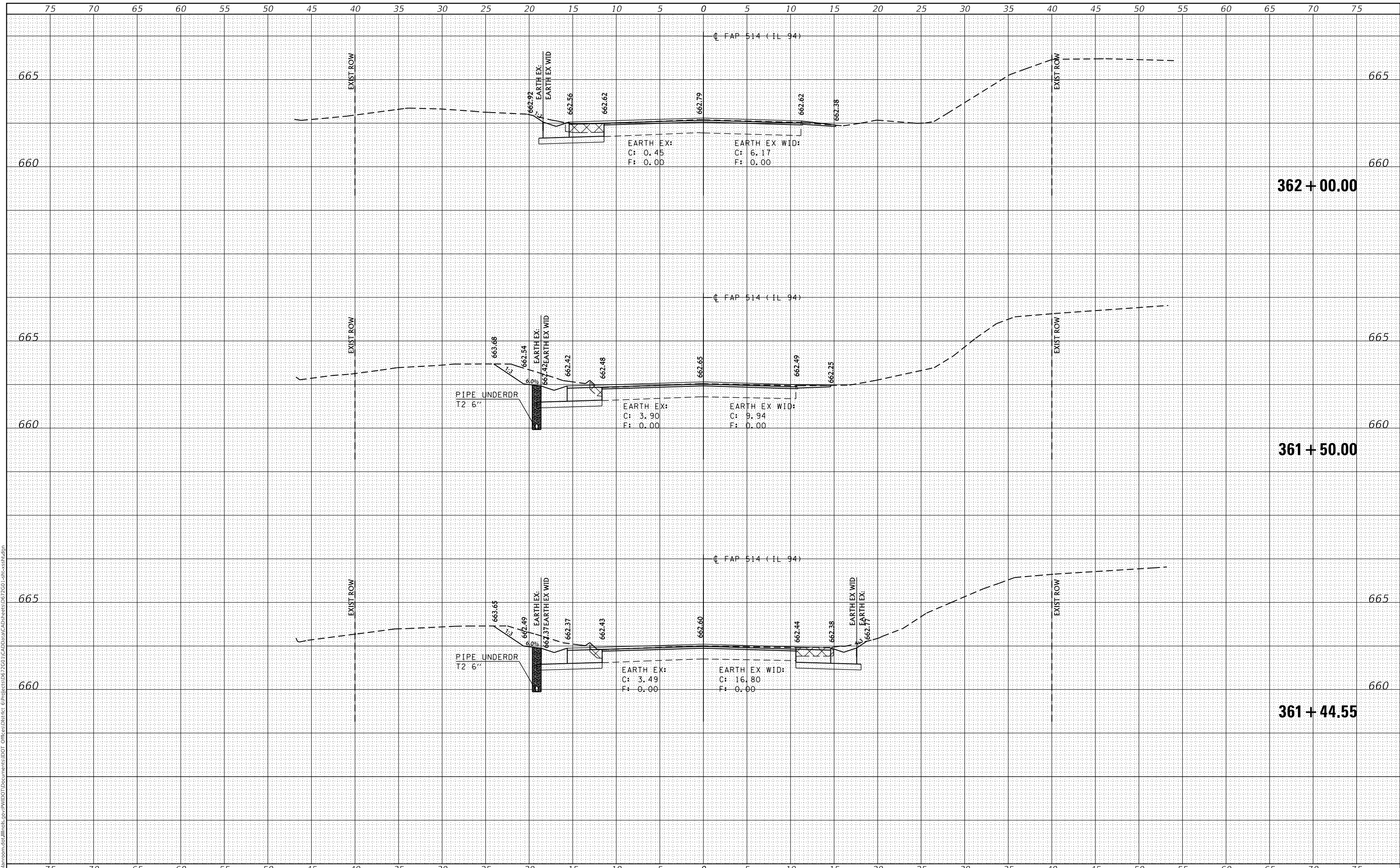
F.A.P. RTE. 514	SECTION *	COUNTY HANCOCK	TOTAL SHEETS 29	SHEET NO. 27
			CONTRACT NO. 72G01	
		ILLINOIS	FED. AID PROJECT	

(106)RS-7, (107)RS-6, BDR

DATE	
BY	
FINAL SURVEY	SURVEYED
NOTE BOOK	PLOTTED
NO.	TEMPLATE
	AREAS CHECKED

DATE	
BY	
ORIGINAL SURVEY	SURVEYED
NOTE BOOK	PLOTTED
NO.	TEMPLATE
	AREAS CHECKED

MODEL: Default
 FILE NAME: D:\v\l\m\com\ad\illinois\p\p\w\DOT\Documents\DOT - Office\District 6\Project\027260\CAD\Drawn\CAD\Sheet\027260_1.spc\crossh.dgn



USER NAME = coxjw	DESIGNED -	REVISED -
	DRAWN -	REVISED -
PLOT SCALE = 10.0000' / in.	CHECKED -	REVISED -
PLOT DATE = 10/16/2019	DATE -	REVISED -

**STATE OF ILLINOIS
 DEPARTMENT OF TRANSPORTATION**

IL 94 - CROSS SECTIONS

SCALE: 5 SHEET 4 OF 5 SHEETS STA. 361+44.55 TO STA. 362+00.00

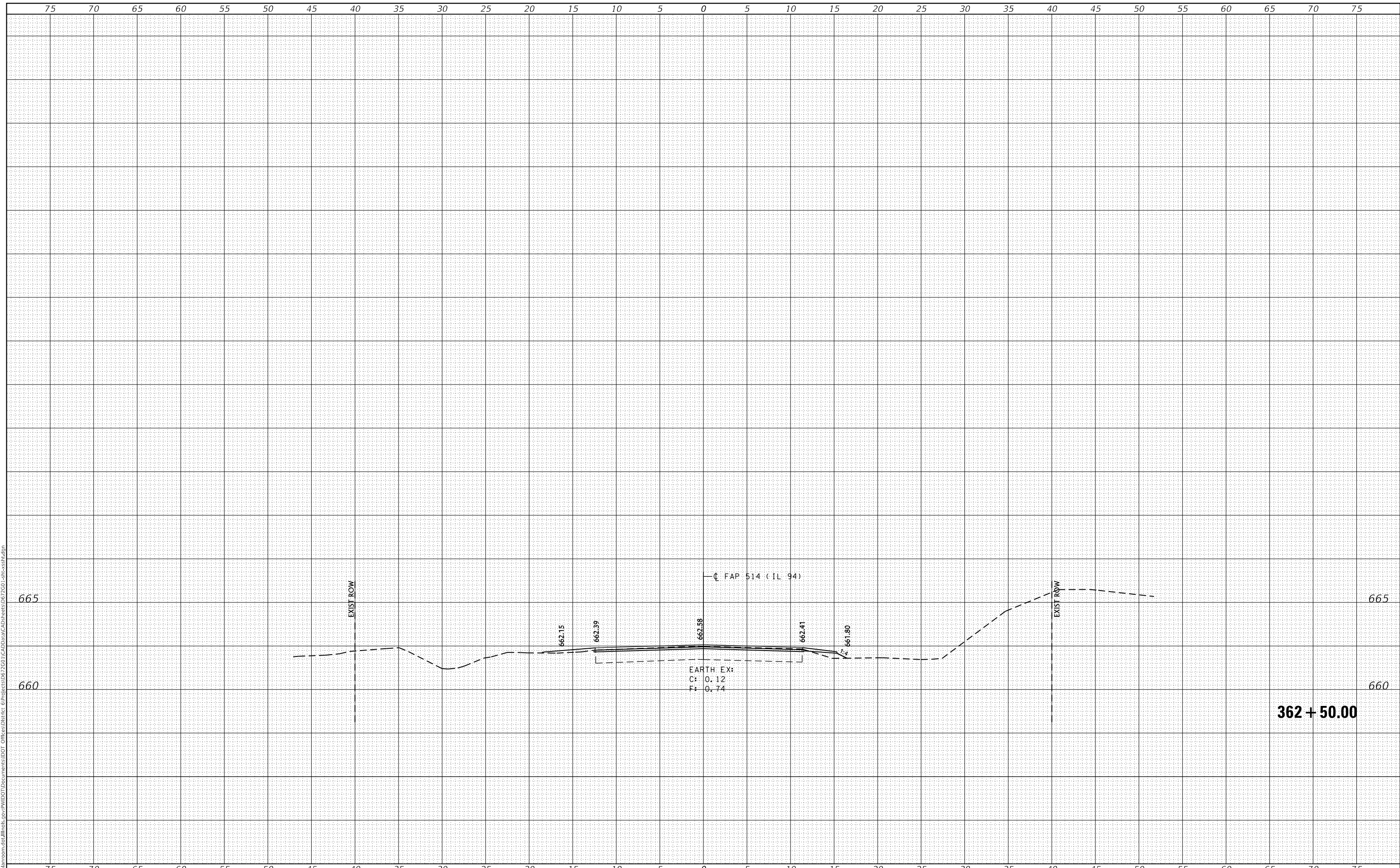
F.A.P. RTE.	SECTION	COUNTY	TOTAL SHEETS	SHEET NO.
514	*	HANCOCK	29	28
			CONTRACT NO. 72G01	

(106)RS-7, (107)RS-6, BDR

FINAL SURVEY NO.	SURVEYED PLOTTED AREAS CHECKED	BY	DATE
NOTE BOOK	TEMPLATE		
	AREAS CHECKED		

ORIGINAL SURVEY NO.	SURVEYED PLOTTED AREAS CHECKED	BY	DATE

MODEL: Default
 FILE NAME: D:\v\blm\room\ad\illinois\p\p\WIDOT\Documents\DOT_Offices\District_6\Project\067260\CADD\BattCAD\Batt\067260_1.spc\crossh.dgn



USER NAME = coxjw	DESIGNED -	REVISED -
	DRAWN -	REVISED -
PLOT SCALE = 10.0000 ' / in.	CHECKED -	REVISED -
PLOT DATE = 10/16/2019	DATE -	REVISED -

**STATE OF ILLINOIS
 DEPARTMENT OF TRANSPORTATION**

IL 94 - CROSS SECTIONS

SCALE: 5 SHEET 5 OF 5 SHEETS STA. 362+50.00 TO STA. 362+50.00

F.A.P. RTE.	SECTION	COUNTY	TOTAL SHEETS	SHEET NO.
514	*	HANCOCK	29	29
CONTRACT NO. 72G01				