

STATE OF ILLINOIS  
DEPARTMENT OF TRANSPORTATION

F.A.P. RTE.	SECTION	COUNTY	TOTAL SHEETS	SHEET NO.
322	D7 PATCHING 2020-4	MACON	5	1
		ILLINOIS	CONTRACT NO. 74932	

FOR INDEX OF SHEETS, SEE SHEET NO. 2

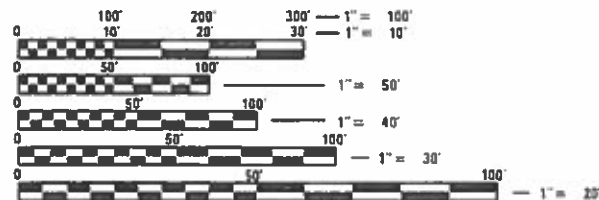
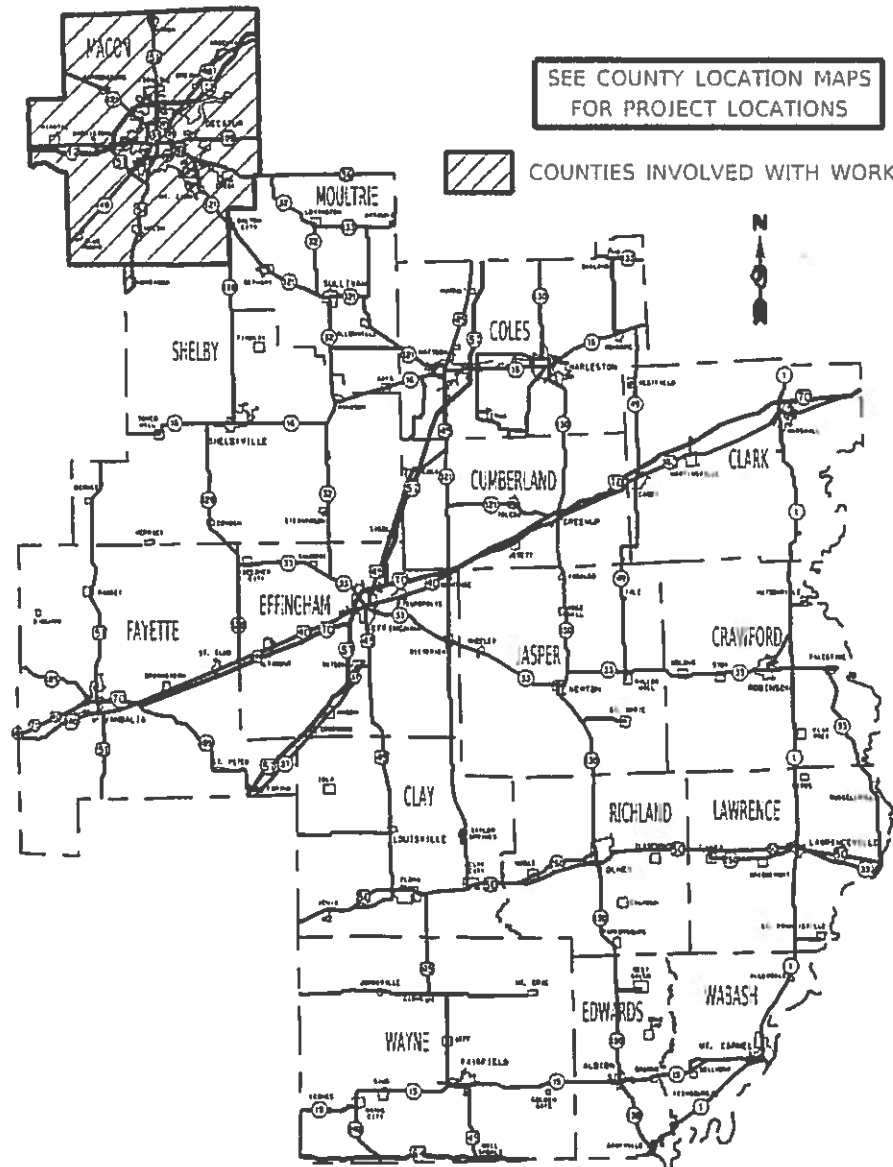
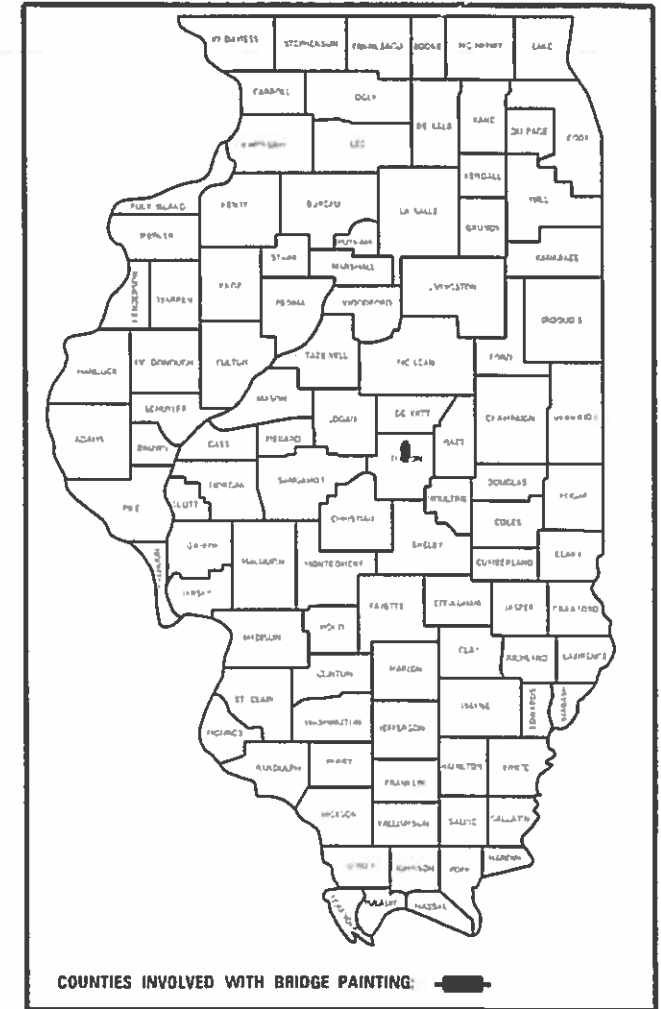
ADT = 12,000 (2017)

# PROPOSED HIGHWAY PLANS

FAP ROUTE 322 (US 51)  
SECTION D7 PATCHING 2020-4  
PAVEMENT PATCHING  
MACON COUNTY

C-97-008-20

D-97-008-20



FULL SIZE PLANS HAVE BEEN PREPARED USING STANDARD ENGINEERING SCALES. REDUCED SIZED PLANS WILL NOT CONFORM TO STANDARD SCALES. IN MAKING MEASUREMENTS ON REDUCED PLANS, THE ABOVE SCALES MAY BE USED.

J.U.L.I.E.  
JOINT UTILITY LOCATION INFORMATION FOR EXCAVATORS  
1-800-892-0123  
OR 811

PROJECT ENGINEER: THOMAS RONAN  
PROJECT MANAGER: THOMAS RONAN  
PHONE: (217)342-8320  
CONTRACT NO. 74932

STATE OF ILLINOIS  
DEPARTMENT OF TRANSPORTATION

SUBMITTED October 7, 2019

Jeffrey P. Myer  
REGIONAL ENGINEER

Dec 6, 2019  
ENGINEER OF DESIGN AND ENVIRONMENT

David P. Chy  
DIRECTOR OF HIGHWAYS PROJECT IMPLEMENTATION

PRINTED BY THE AUTHORITY  
OF THE STATE OF ILLINOIS

INDEX OF SHEETS

<u>SHEET NO.</u>	<u>DESCRIPTION</u>
1	COVER SHEET
2	INDEX OF SHEETS AND GENERAL NOTES
3	SUMMARY OF QUANTITIES
4	SCHEDULE OF QUANTITIES
5	LOCATION MAPS

THE FOLLOWING STANDARDS ARE A PART OF THESE PLANS AND ARE INCLUDED AFTER SHEET NO. 5:

000001-07	STANDARD SYMBOLS, ABBREVIATIONS AND PATTERNS
001001-02	AREAS OF REINFORCEMENT BARS
001006	DECIMAL OF AN INCH AND A FOOT
420001-09	PAVEMENT JOINTS
420701-03	PAVEMENT WELDED WIRE REINFORCEMENT
421001-03	BAR REINFORCEMENT FOR CONTINUOUSLY REINFORCED CONCRETE PAVEMENT
442001-04	CLASS A PATCHES
442101-09	CLASS B PATCHES
701101-05	OFF-RD OPERATIONS, MULTILANE, 15' TO 24" FROM PAVEMENT EDGE
701106-02	OFF-RD OPERATIONS, MULTILANE, MORE THAN 15' AWAY
701400-09	APPROACH TO LANE CLOSURE, FREEWAY/EXPRESSWAY
701401-12	LANE CLOSURE, FREEWAY/EXPRESSWAY
701411-09	LANE CLOSURE, MULTILANE, AT ENTRANCE OR EXIT RAMP, FOR SPEEDS >= 45 MPH
701601-09	URBAN LANE CLOSURE, MULTILANE, 1W OR 2W NONTRAVERSABLE MEDIAN
701701-10	URBAN LANE CLOSURE, MULTILANE INTERSECTION
701901-08	TRAFFIC CONTROL DEVICES
886001-01	DETECTOR LOOP INSTALLATIONS
886006-01	TYPICAL LAYOUT FOR DETECTION LOOPS

GENERAL NOTES:

THIS PROJECT IS LOCATED ON US ROUTE 51 IN MACON COUNTY. THIS PROJECT STARTS AT I-72 AND EXTENDS NORTH FOR APPROXIMATELY 10 MILES TO THE MACON/DEWITT COUNTY LINE. THE WORK INCLUDED IN SECTION D7 PATCHING 2020-4 CONSISTS OF CLASS A AND CLASS B PAVEMENT PATCHING, DETECTOR LOOPS, TRAFFIC CONTROL, AND ANY OTHER WORK NECESSARY TO COMPLETE THE SECTION.

ALL REINFORCEMENT BARS FOR CLASS A PATCHES SHALL BE #6 BARS.

URBAN/RURAL SPLIT - EVERYTHING SOUTH OF C.H. 20 IS URBAN & EVERYTHING NORTH OF C.H. 20 IS RURAL.

THE ACTUAL LOCATIONS OF PAVEMENT PATCHING AND FINAL QUANTITIES SHALL BE DETERMINED BY THE ENGINEER IN THE FIELD.

AN ESTIMATED QUANTITY OF DETECTOR LOOPS, TYPE I HAS BEEN INCLUDED TO REPLACE ANY DETECTOR LOOPS THAT ARE WITHIN THE LIMITS OF A PATCH. THE ACTUAL LOCATIONS OF DETECTOR LOOPS AND FINAL QUANTITIES SHALL BE DETERMINED BY THE ENGINEER IN THE FIELD.

MODEL: Default  
FILE: M:\MS\p\uplanroom.dat\illinois.gov\PIWDOT\Documents\DOT\_Offices\District\_7\Projects\174932\CADDData\CAD\Sheets\174932-sht-genote.dgn

REV. - MS

USER NAME = steffenmk	DESIGNED -	REVISED -	<b>STATE OF ILLINOIS DEPARTMENT OF TRANSPORTATION</b>	<b>INDEX OF SHEET AND GENERAL NOTES</b>	F.A.P. RTE.	SECTION	COUNTY	TOTAL SHEETS	SHEET NO.	
	DRAWN -	REVISED -			322	D7 PATCHING 2020-4	MACON	5	2	
PLOT SCALE = 100.0000' / in.	CHECKED -	REVISED -			CONTRACT NO. 74932					
PLOT DATE = 10/8/2019	DATE -	REVISED -			SCALE: N/A	SHEET 1	OF 1 SHEETS	STA.	TO STA.	ILLINOIS FED. AID PROJECT



MODEL: Default  
 FILE: h:\m1\c:\pub\planroom\dat\illinois\pwr\WIDOT\Documents\DOT\_Offices\Director\_7\Projects\74932\CAAD\ataCAD\sheets\DOT74932-shs-schedule.dgn

PATCHING SCHEDULE											
PATCHING SCHEDULE	CLASS A PATCHES, TYPE I, 9"	CLASS A PATCHES, TYPE II, 9"	CLASS A PATCHES, TYPE III, 9"	CLASS A PATCHES, TYPE IV, 9"	CLASS B PATCHES, TYPE II, 11"	CLASS B PATCHES, TYPE III, 11"	PATCHING REINFORCEMENT	DOWEL BARS 1 1/2"	WELDED WIRE REINFORCEMENT	SAW CUTS	TIE BARS 3/4"
	SQ YD	SQ YD	SQ YD	SQ YD	SQ YD	SQ YD	SQ YD	EACH	SQ YD	FOOT	EACH
NBDL	82	184	54	32	75		352	180		2538	87
NBPL	17	20			59		37	140		630	
SBDL	183	171	55	32	232	16	441	600	16	4507	72
SBPL	18	50	62	32	291	16	161	740	16	2616	55
SBLTTL					32			80		192	
TOTALS	300	425	171	96	689	32	991	1740	32	10483	214

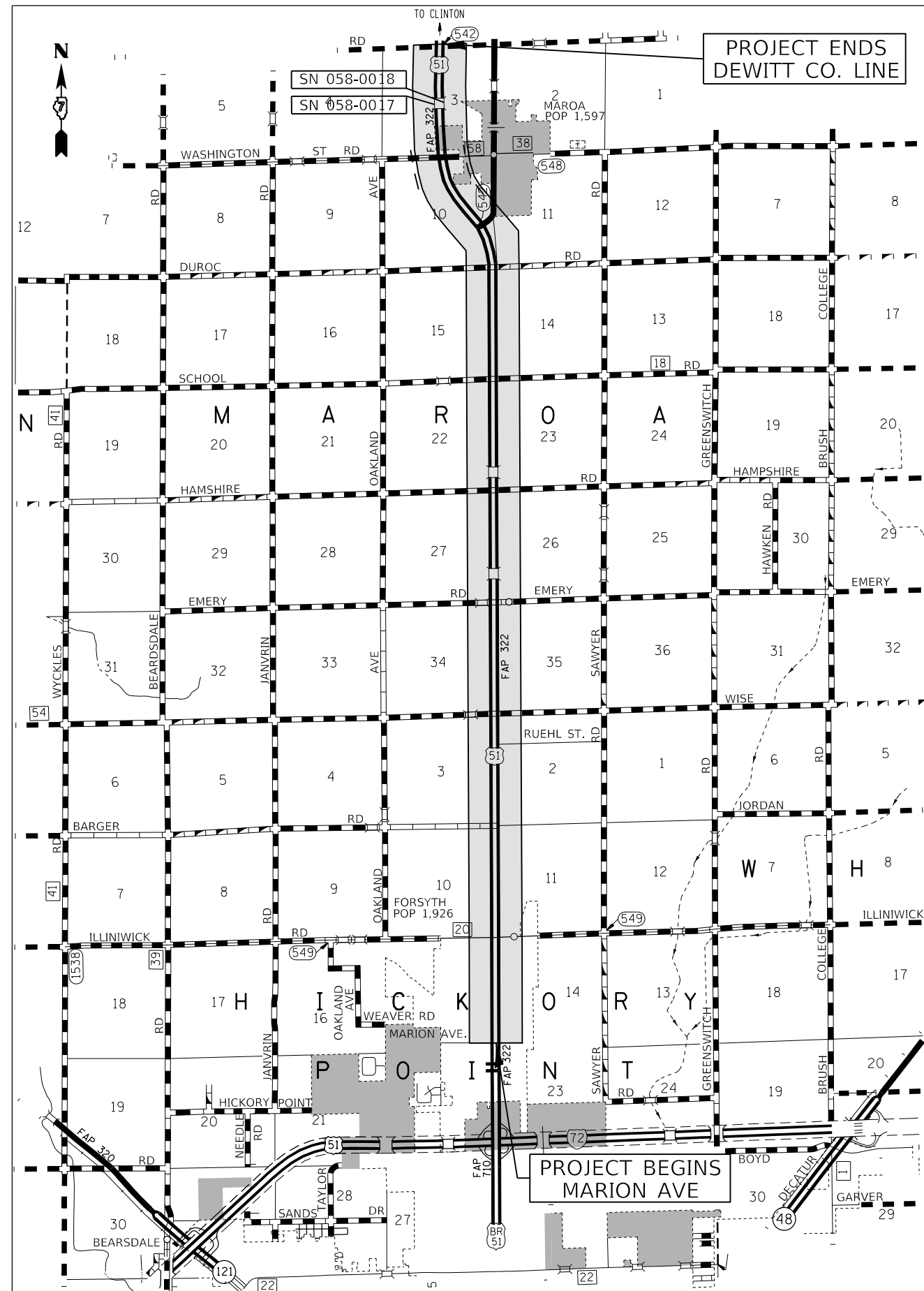
USER NAME = steffenmk	DESIGNED -	REVISED -
	DRAWN -	REVISED -
PLOT SCALE = 100.0000 ' / in.	CHECKED -	REVISED -
PLOT DATE = 10/8/2019	DATE -	REVISED -

**STATE OF ILLINOIS  
 DEPARTMENT OF TRANSPORTATION**

**SCHEDULE OF QUANTITIES**

SCALE: N/A SHEET 1 OF 1 SHEETS STA. TO STA.

F.A.P. RTE.	SECTION	COUNTY	TOTAL SHEETS	SHEET NO.
322	D7 PATCHING 2020-4	MACON	5	4
			CONTRACT NO. 74932	
		ILLINOIS	FED. AID PROJECT	



MODEL: Default  
 FILE: \\mapscg-pub\pubroom\dat\illinois\pww\DOT\Documents\DOT\_Offices\Illiniet\74932\CADD\Map\CADD\sheet\74932-51c-drawill.dgn

USER NAME = steffemk	DESIGNED -	REVISED -
	DRAWN -	REVISED -
PLOT SCALE = 100,0000' / in.	CHECKED -	REVISED -
PLOT DATE = 10/8/2019	DATE -	REVISED -

**STATE OF ILLINOIS**  
**DEPARTMENT OF TRANSPORTATION**

**LOCATION MAP**

SCALE: N/A      SHEET 1 OF 1 SHEETS      STA.      TO STA.

F.A.P. RTE.	SECTION	COUNTY	TOTAL SHEETS	SHEET NO.
322	D7 PATCHING 2020-4	MACON	5	5
CONTRACT NO. 74932				
ILLINOIS FED. AID PROJECT				