

084

STATE OF ILLINOIS
DEPARTMENT OF TRANSPORTATION

F.A. ROUTE	SECTION	COUNTY	TOTAL SHEETS	SHEET NO.
39	29	WINNEBAGO	*300	1
ILLINOIS CONTRACT NO. 64L72				

* F.A. 39, F.A.P. 301, F.A.S. 1045A ** (201-1,2,3)RS-1 & (4,4-1,5)RS-2
*300 + 5 = 305 TOTAL SHEETS
D-92-093-16

FOR INDEX OF SHEETS, SEE SHEET NO. 2
FOR STATE STANDARDS, SEE SHEET NO. 2

TOWNSHIP: ROCKFORD & CHERRY VALLEY
SECTIONS: 35, 2, 3, 7, 8, 9, 10, 16, 17, 20, 29

PROPOSED HIGHWAY PLANS

FAI ROUTE 39 (I-39)
FAP ROUTE 301 (US 20)
FAS ROUTE 1045A (BAXTER ROAD)
SECTION (201-1,2,3) RS-1 & (4,4-1,5)RS-2
PROJECT NHPP-8QQ3(941)
MILLING AND RESURFACING
WINNEBAGO COUNTY

R. 2 E. C-92-031-18



- OMISSIONS**
- STA 2418+84 - STA 2430+46 NB
 - STA 2419+63 - STA 2431+31 SB
 - STA 2467+39 - STA 2468+84 SB
 - STA 2467+46 - 2468+90 NB
 - STA 48+26 - STA 54+29 RAMP BD
 - STA 64+80 - STA 68+71 RAMP BD
 - STA 46+13 - STA 50+01 RAMP DB
 - STA 2647+39 - STA 2649+08 WB
 - STA 2647+67 - STA 2649+33 EB
 - STA 2682+59 - STA 2685+35 WB
 - STA 2683+72 - STA 2686+49 EB
 - STA 2723+19 - STA 2725+46 WB
 - STA 2723+50 - STA 2725+74 EB
 - STA 55+97 - STA 58+76 RAMP AD
 - STA 2550+46 - STA 2554+87 RAMP DA
 - STA 2558+14 - STA 2574+20 RAMP DA
 - STA 195+62 - STA 198+24 BAXTER

PROJECT ENDS - US 20
STA 1158+45.1
PROJECT BEGINS - US 20 /I-39
STA 2571+69

IMPROVEMENT BEGINS
STA 1074+00

PROJECT BEGINS - US 20
STA 1081+00

IMPROVEMENT BEGINS
BAXTER ROAD
STA 185+10

PROJECT BEGINS
BAXTER ROAD
STA 188+79

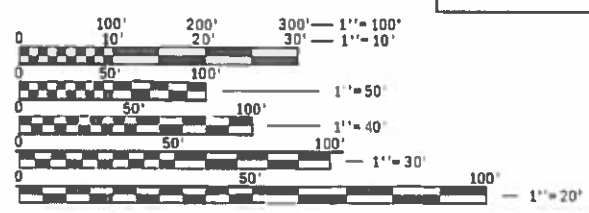
IMPROVEMENT ENDS
STA 2739+53 SB

PROJECT ENDS
STA 2731+01 NB
STA 2737+65 SB

PROJECT BEGINS
STA 2385+58 NB & SB

PROJECT ENDS
BAXTER ROAD
STA 204+40

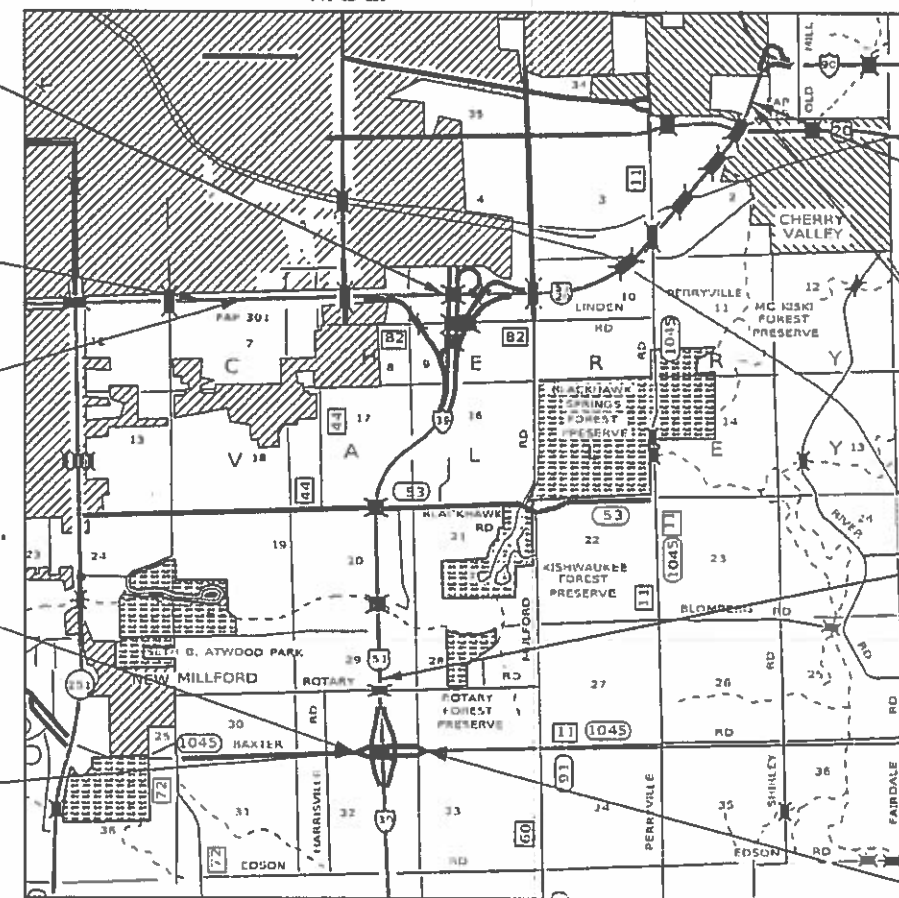
IMPROVEMENT ENDS
BAXTER ROAD
STA 209+41



FULL SIZE PLANS HAVE BEEN PREPARED USING STANDARD ENGINEERING SCALES. REDUCED SIZED PLANS WILL NOT CONFORM TO STANDARD SCALES. IN MAKING MEASUREMENTS ON REDUCED PLANS, THE ABOVE SCALES MAY BE USED.

J.U.L.I.E.
JOINT UTILITY LOCATION INFORMATION FOR EXCAVATION
1-800-892-0123
OR 811

PROJECT ENGINEER: FAITH DUNCAN
PROJECT MANAGER: TRACI DUDEN (815-284-5932)
EMAIL: Traci.Duden@illinois.gov
CONTRACT NO. 64L72



GROSS LENGTH I39 NB	= 33864 FT = 6.41 MILE
GROSS LENGTH I39 SB	= 34523 FT = 6.54 MILE
GROSS LENGTH US 20	= 7745 FT = 1.47 MILE
GROSS LENGTH BAXTER RD	= 1562 FT = 0.30 MILE
NET LENGTH I39 NB	= 32169 FT = 6.09 MILE
NET LENGTH I39 SB	= 32236 FT = 6.11 MILE
NET LENGTH US 20	= 7745 FT = 1.47 MILE
NET LENGTH BAXTER RD	= 1300 FT = 0.25 MILE

STATE OF ILLINOIS
DEPARTMENT OF TRANSPORTATION

SUBMITTED Oct 23, 2019

[Signature]
REGIONAL ENGINEER

[Signature]
ENGINEER OF DESIGN AND ENVIRONMENT

[Signature]
DIRECTOR OF HIGHWAYS PROJECT IMPLEMENTATION

PRINTED BY THE AUTHORITY
OF THE STATE OF ILLINOIS

INDEX OF SHEETS & HIGHWAY STANDARDS

INDEX OF SHEETS

1	COVER SHEET
2	INDEX OF SHEETS & HIGHWAY STANDARDS
3-4	GENERAL NOTES
5-15	SUMMARY OF QUANTITIES
16-26	TYPICAL SECTIONS
27-53	SCHEDULE OF QUANTITIES
54-69	HOT-MIX ASPHALT SCHEDULE
70	PATCHING SCHEDULE
71	TEMPORARY GUARDRAIL SCHEDULE
72-77	GUARDRAIL SCHEDULE
78-83	HORIZONTAL AND VERTICAL CONTROL
84	PROJECT OVERVIEW DETAIL
85-109	PLAN SHEETS
110	MOT OVERVIEW DETAIL
111-113	REAL-TIME TRAFFIC CONTROL MAP
114-126	MOT TYPICALS
127-137	ALTERNATE ROUTE/DETOUR SHEETS
138-141	MOT - PRESTAGE 1
142-148	MOT - STAGE 1
149-155	MOT - STAGE 2
156-158	MOT - STAGE 3
159-163	MOT - STAGE 4
164-171	MOT - STAGE 5A
172-178	MOT - STAGE 5B
179-191	MOT - STAGE 6A
192-203	MOT - STAGE 6B
204-219	GUARDRAIL IMPROVEMENTS
220-244	PAVEMENT MARKING
245-247	TEMPORARY SIGNALS
248-252	TEMPORARY LIGHTING
253-257	STRUCTURE OVERLAY DETAIL
258	PROFILE ADJUSTMENT DETAIL
259-261	CROSS OVER DETAILS
262	INLET TO BE ADJUSTED (SPECIAL) DETAIL - FOR INFORMATION ONLY
263	REAL-TIME TRAFFIC CONTROL DETAIL
264-266B	MOT WORK ZONE SIGN DETAILS
267	HOT-MIX ASPHALT SHOULDER AT GUARDRAIL (DIST STD 23.4) PAVEMENT PATCHING FOR HOT-MIX ASPHALT SURFACED PAVEMENT (DIST STD 32.4) DELINEATOR AND POST ORIENTATION (DIST STD 37.4) SUBGRADE REPLACEMENT (DIST STD 97.4)
268	TYPICAL MEDIAN CROSSOVER CLOSURE (DIST STD 98.4)
269	FIELD TILE JUNCTION VAULTS 2' & 3' DIAMETER (DIST STD 30.2) PERMANENT SURVEY MARKERS, TYPE II (DIST STD 66.2)
270-273	WORK ZONE SIGN DETAILS (DIST STD 34.1)
274	TEMPORARY ROAD CLOSURE EXPRESSWAY (DIST STD 36.1)
275	TRAFFIC CONTROL TYPICAL WEAVE (DIST STD 39.1)
276	TRAFFIC CONTROL FOR ROAD CLOSURE (DIST STD 40.1)
277-279	TYPICAL PAVEMENT MARKINGS (DIST STD 41.1)
280	PAINTING DETAILS (DIST STD 44.1)
281-284	REMOVE AND RE-ERECT STEEL PLATE BEAM GUARDRAIL (DIST STD 53.1)
285	SLOTTED DRAIN PIPE (DIST STD 68.1)
286-300	CROSS SECTIONS

HIGHWAY STANDARDS

000001-07	STANDARD SYMBOLS, ABBREVIATIONS, AND PATTERNS
001001-02	AREAS OF REINFORCEMENT BARS
001006	DECIMAL OF AN INCH AND OF A FOOT
202001-01	EARTH MEDIAN DITCH CHECK
280001-07	TEMPORARY EROSION CONTROL SYSTEMS
420001-09	PAVEMENT JOINTS
420101-06	24' (10.8 M) JOINTED PCC PAVEMENT
420701-03	PAVEMENT WELDED WIRE REINFORCEMENT
421001-03	BAR REINFORCEMENT FOR CRC PAVEMENT
442001-04	CLASS A PATCHES
442101-09	CLASS B PATCHES
482011-03	HMA SHLD STRIPS/SHLDS WITH RESURFACING OR WIDENING AND RESURFACING PROJECTS
542411	SLOPED METAL END SECTIONS FOR PIPE CULVERTS 15" (375mm) THRU 60" (1500 mm)
604106-01	MEDIAN INLET FOR 36" (900mm) REINFORCED CONCRETE PIPE
610001-08	SHOULDER INLET WITH CURB
601101-02	CONCRETE HEADWALL FOR PIPE UNDERDRAINS
606001-07	CONCRETE CURB TYPE B AND COMBINATION CONCRETE CURB AND GUTTER
606301-04	PC CONCRETE ISLANDS AND MEDIANS
630001-12	STEEL PLATE BEEN GUARDRAIL
630301-09	SHOULDER WIDENING FOR TYPE 1 (SPECIAL) GUARDRAIL TERMINALS
631011-10	TRAFFIC BARRIER TERMINAL, TYPE 2
631031-16	TRAFFIC BARRIER TERMINAL, TYPE 6
631033-08	TRAFFIC BARRIER TERMINAL, TYPE 6B
635001-02	DELINEATORS
642001-02	SHOULDER RUMBLE STRIPS, 16 IN
667101-02	PERMANENT SURVEY MARKERS
701101-05	OFF-ROAD MOVING OPERATIONS, MULTILANE, 15' (4.5 M) TO 24" (600 MM) FROM PAVEMENT EDGE
701106-02	OFF-ROAD OPERATIONS, MULTILANE, MORE THAN 15' (4.5 M) AWAY
701400-09	APPROACH TO LANE CLOSURE, FREEWAY/EXPRESSWAY
701401-12	LANE CLOSURE FREEWAY/EXPRESSWAY
701406-12	LANE CLOSURE, FREEWAY/EXPRESSWAY, DAY OPERATIONS ONLY
701411-09	LANE CLOSURE, MULTILANE, AT ENTRANCE OR EXIT RAMP, FOR SPEEDS ≥ 45 MPH
701416-11	LANE CLOSURE, FREEWAY/EXPRESSWAY, WITH CROSSOVER AND BARRIER
701421-08	LANE CLOSURE, MULTILANE, DAY OPERATIONS ONLY, FOR SPEEDS > 45 MPH TO 55 MPH
701426-09	LANE CLOSURE, MULTILANE, INTERMITTENT OR MOVING OPER., FOR SPEEDS ≥ 45 MPH
701428-01	TRAFFIC CONTROL, SETUP AND REMOVAL, FREEWAY/EXPRESSWAY
701451-05	RAMP CLOSURE FREEWAY/EXPRESSWAY
701456-05	PARTIAL EXIT RAMP CLOSURE FREEWAY/EXPRESSWAY
701701-10	URBAN LANE CLOSURE, MULTILANE INTERSECTION
701901-08	TRAFFIC CONTROL DEVICES
704001-08	TEMPORARY CONCRETE BARRIER
720001-01	SIGN PANEL MOUNTING DETAILS
720006-04	SIGN PANEL ERECTION DETAILS
720011-01	METAL POSTS FOR SIGNS, MARKERS & DELINEATORS
725001-01	OBJECT AND TERMINAL MARKERS
728001-01	TELESCOPING STEEL SIGN SUPPORT
729001-01	APPLICATIONS OF TYPES A & B METAL POSTS (FOR SIGNS & MARKERS)
731001-01	BASE FOR TELESCOPING STEEL SIGN SUPPORT
780001-05	TYPICAL PAVEMENT MARKINGS
781001-04	TYPICAL APPLICATIONS RAISED REFLECTIVE PAVEMENT MARKERS
782006-01	GUARDRAIL AND BARRIER WALL REFLECTOR MOUNTING DETAILS
825001-04	LIGHTING CONTROLLER, POLE MOUNTED, 240V
830026-01	TEMPORARY ROADWAY LIGHTING

MODEL: Default
FILE: MainE_PlanRoom.dwg
PROJECT: ILLINOIS DOT - PROJECTS\64172\CADD\DATA\CAD\Sheet\03-64172-sht-cover.dgn

USER NAME = hogensonjd	DESIGNED -	REVISED -
	DRAWN -	REVISED -
PLOT SCALE = 100.0000' / in.	CHECKED -	REVISED -
PLOT DATE = 10/30/2019	DATE -	REVISED -

**STATE OF ILLINOIS
DEPARTMENT OF TRANSPORTATION**

INDEX OF SHEETS & HIGHWAY STANDARDS

SCALE: NTS SHEET 1 OF 1 SHEETS STA. TO STA.

F.A.* RTE.	SECTION	COUNTY	TOTAL SHEETS	SHEET NO.
*	**	WINNEBAGO	300	2
CONTRACT NO. 64L72				
ILLINOIS FED. AID PROJECT				

* F.A.I. 39, F.A.P. 301, F.A.S. 1045A ** (201-1,2,3)RS-1 & (4,4-1,5)RS-2

SUMMARY OF QUANTITIES

PAY ITEM NUMBER	PAY ITEM	UNIT	TOTAL QUANTITIES	I 39	US 20 & BAXTER RD
				90% FEDERAL 10% STATE 0005	80% FEDERAL 20% STATE 0005
20200100	EARTH EXCAVATION	CU YD	1,875	1,840	35
21101600	TOPSOIL FURNISH AND PLACE, VARIABLE DEPTH	SQ YD	1,486	1,371	115
21400100	GRADING AND SHAPING DITCHES	FOOT	96,136	65,156	30,980
25000110	SEEDING, CLASS 1A	ACRE	5.25	3.75	1.50
25000400	NITROGEN FERTILIZER NUTRIENT	POUND	430	302	128
25000500	PHOSPHORUS FERTILIZER NUTRIENT	POUND	430	302	128
25000600	POTASSIUM FERTILIZER NUTRIENT	POUND	430	302	128
** 25000750	MOWING	ACRE	5.25	3.75	1.50
25100125	MULCH, METHOD 3	ACRE	5.25	3.75	1.50
28000500	INLET AND PIPE PROTECTION	EACH	6	6	
30300106	AGGREGATE SUBGRADE IMPROVEMENT 6"	SQ YD	947	206	741
30300112	AGGREGATE SUBGRADE IMPROVEMENT 12"	SQ YD	9121	9121	⚠
40600290	BITUMINOUS MATERIALS (TACK COAT)	POUND	79,782	62,665	17,117
40600295	POLYMERIZED BITUMINOUS MATERIALS (TACK COAT)	POUND	231,447	189,727	41,720

**SPECIALTY ITEMS ** 100% STATE

MODEL: Default
FILE NAME: P:\uplanroom.dat\illinois.gov\PWIDOT\Documents\DOT_Offices\District 2\Projects\64L72\CADDData\CAD\Sheet03-64L72-sh-500.dgn

USER NAME = hogensonjd	DESIGNED -	REVISED -	STATE OF ILLINOIS DEPARTMENT OF TRANSPORTATION	SUMMARY OF QUANTITIES			F.A.* RTE. *	SECTION **	COUNTY WINNEBAGO	TOTAL SHEETS 300	SHEET NO. 5
PLOT SCALE = 100.0000' / in.	CHECKED -	REVISED -		SCALE: NTS			SHEET 1 OF 11 SHEETS			STA. TO STA.	
PLOT DATE = 10/30/2019	DATE -	REVISED -		ILLINOIS FED. AID PROJECT			* F.A.I. 39, F.A.P. 301, F.A.S. 045A ** (201-1,2,3)RS-1 & (4,4-1,5)RS-2				
				⚠ REV. 1/6/20 REV. 11/25/19							

SUMMARY OF QUANTITIES

PAY ITEM NUMBER	PAY ITEM	UNIT	TOTAL QUANTITIES	I 39 90% FEDERAL 10% STATE 0005	US 20 & BAXTER RD 80% FEDERAL 20% STATE 0005
				64200116	SHOULDER RUMBLE STRIPS, 16 INCH
64300260	IMPACT ATTENUATORS (FULLY REDIRECTIVE, NARROW), TEST LEVEL 3	EACH	10	10	
64300370	IMPACT ATTENUATORS (FULLY REDIRECTIVE, WIDE), TEST LEVEL 3	EACH	4	4	
* 66700305	PERMANENT SURVEY MARKERS, TYPE II	EACH	4	2	2
67000400	ENGINEER'S FIELD OFFICE, TYPE A	CAL MO	15	15	
67100100	MOBILIZATION	L SUM	1	1	
70100410	TRAFFIC CONTROL AND PROTECTION, STANDARD 701416	EACH	6	6	
70100420	TRAFFIC CONTROL AND PROTECTION, STANDARD 701411	EACH	11	11	
70100700	TRAFFIC CONTROL AND PROTECTION, STANDARD 701406	L SUM	1	1	
70100800	TRAFFIC CONTROL AND PROTECTION, STANDARD 701401	L SUM	1	1	
70100820	TRAFFIC CONTROL AND PROTECTION, STANDARD 701451	L SUM	1	1	
70100825	TRAFFIC CONTROL AND PROTECTION, STANDARD 701456	L SUM	1	1	
70102635	TRAFFIC CONTROL AND PROTECTION, STANDARD 701701	L SUM	1	1	△
* 70103815	TRAFFIC CONTROL SURVEILLANCE	CAL DA	128	128	
* 70107025	CHANGEABLE MESSAGE SIGN	CAL DA	734	734	△

*SPECIALTY ITEMS

MODEL: Default
FILE: Main: P:\uplanroom.dat: illinois.gov:PWIDOT\Documents\DOT_Offices\District 2\Projects\64L72\CADData\CADsheets\02_64L72_sht-500.dgn

USER NAME = hogensonjd	DESIGNED -	REVISED -
PLOT SCALE = 100.0000' / in.	DRAWN -	REVISIED -
PLOT DATE = 10/30/2019	CHECKED -	REVISIED -
	DATE -	REVISIED -

**STATE OF ILLINOIS
DEPARTMENT OF TRANSPORTATION**

SUMMARY OF QUANTITIES

SCALE: NTS SHEET 6 OF 11 SHEETS STA. TO STA.

F.A.* RTE.	SECTION	COUNTY	TOTAL SHEETS	SHEET NO.
*	**	WINNEBAGO	300	10
CONTRACT NO. 64L72				

ILLINOIS FED. AID PROJECT
* F.A.I. 39, F.A.P. 301, F.A.S. 1045A ** (201-1,2,3)RS-1 & (4,4-1,5)RS-2

△ REV. 1/6/20 REV. 11/25/19

SUMMARY OF QUANTITIES

PAY ITEM NUMBER	PAY ITEM	UNIT	TOTAL QUANTITIES	I 39	US 20 & BAXTER RD
				90% FEDERAL 10% STATE 0005	80% FEDERAL 20% STATE 0005
X4210307	WIDE FLANGE BEAM TERMINAL JOINT REPAIR (SPECIAL)	EACH	11	11	
X4400196	HOT-MIX ASPHALT SURFACE REMOVAL, SPECIAL	SQ YD	11,451	9,550	1,901
X4401198	HOT-MIX ASPHALT SURFACE REMOVAL, VARIABLE DEPTH	SQ YD	33,315	33,315	
X4402805	ISLAND REMOVAL	SQ FT	956		956
X4403700	MEDIAN REMOVAL (SPECIAL)	SQ FT	550		550
X5427600	REMOVE AND RELOCATE END SECTIONS	EACH	1	1	
X5810100	WATERPROOFING MEMBRANE SYSTEM (SPECIAL)	SQ YD	1,825	1,825	
X6026200	INLETS TO BE ADJUSTED (SPECIAL)	EACH	1	1	
X6050700	REMOVE INLET BOX	EACH	2		2
X6061055	CONCRETE ISLAND (SPECIAL)	SQ FT	444		444
X6300235	WOOD POSTS	EACH	29	29	
X6430120	REMOVE IMPACT ATTENUATORS, NO SALVAGE	EACH	16	16	
X7010206	TRAFFIC CONTROL AND PROTECTION, STANDARD 701401, SPECIAL	EACH	5	5	
X7010216	TRAFFIC CONTROL AND PROTECTION, (SPECIAL)	L SUM	1	1	
X7030005	TEMPORARY PAVEMENT MARKING REMOVAL	SQ FT	130,164	130,164	

*SPECIALTY ITEMS

MODEL: Default
FILE: h:\mhc\p\pub\haronom.dwg
PROJECT: 64L72\CADDData\CAD\Sheet\03-64L72-sh-500.dgn

USER NAME = hogensonjd	DESIGNED -	REVISED -
PLOT SCALE = 100.0000' / in.	DRAWN -	REVISD -
PLOT DATE = 10/30/2019	CHECKED -	REVISD -
	DATE -	REVISD -

**STATE OF ILLINOIS
DEPARTMENT OF TRANSPORTATION**

SUMMARY OF QUANTITIES	
SCALE: NTS	SHEET 10 OF 11 SHEETS STA. TO STA.

F.A.* RTE.*	SECTION **	COUNTY WINNEBAGO	TOTAL SHEETS 300	SHEET NO. 14
CONTRACT NO. 64L72				

SCHEDULE OF QUANTITIES

30300112 AGGREGATE SUBGRADE IMPROVEMENT 12"

SO_YD	LOCATION	OFFSET	REMARKS
<u>STAGE 5A</u>			
213	2442+72	NB	OUTSIDE SHOULDER
213	2442+72	SB	OUTSIDE SHOULDER
213	2525+74	NB	OUTSIDE SHOULDER
213	2525+74	SB	OUTSIDE SHOULDER
<u>Stage 6A</u>			
260	1148+00	EB	OUTSIDE SHOULDER
213	1148+00	EB	INSIDE SHOULDER
260	2658+50	EB	OUTSIDE SHOULDER
213	2658+50	EB	INSIDE SHOULDER
<u>Stage 6B</u>			
260	1148+00	WB	OUTSIDE SHOULDER
213	1148+00	WB	INSIDE SHOULDER
260	2658+50	WB	OUTSIDE SHOULDER
213	2658+50	WB	INSIDE SHOULDER
2,744	TOTAL		

MODEL: Default
FILE NAME: p:\h\ammon\dat\illinois.gov\PM\DOT\Documents\DOT_Offices\District_2\Projects\647\CADD\CalCAD\Sheets\DSZ-647Z.sht:schedule.dgn

USER NAME - SCHUETTEMA	DESIGNED -	REVISED -
PLOT SCALE - 100.0000' / in.	DRAWN -	REVISED -
PLOT DATE - Dec-18-2019 11:59:13 AM	CHECKED -	REVISED -
	DATE -	REVISED -

**STATE OF ILLINOIS
DEPARTMENT OF TRANSPORTATION**

SCHEDULE OF QUANTITIES

SCALE: NTS SHEET 27 OF 27 SHEETS STA. TO STA.

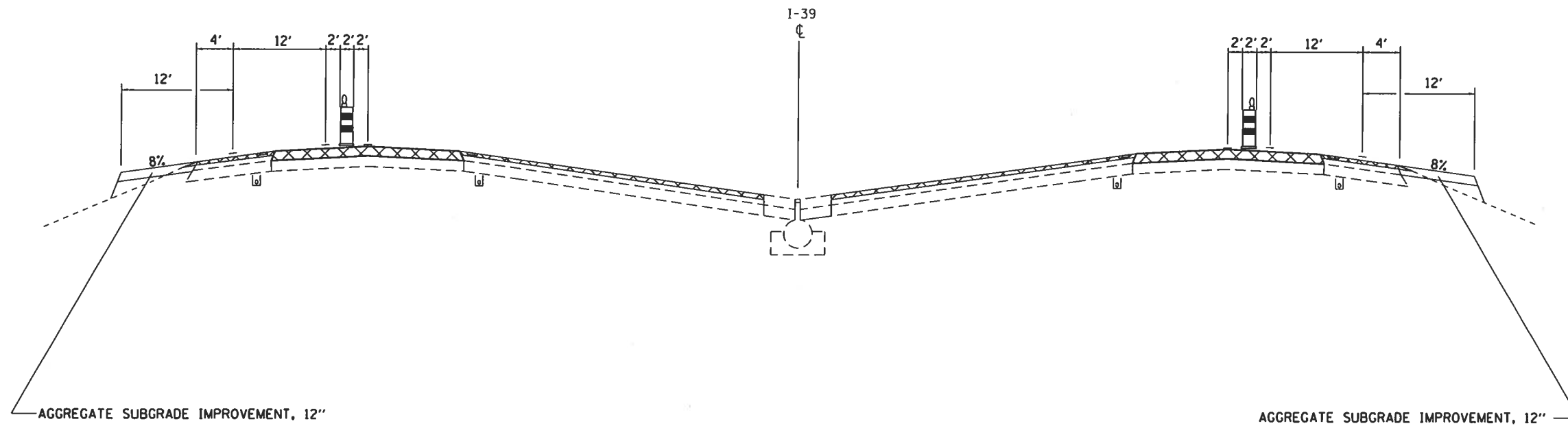
F.A. RTE.	SECTION	COUNTY	TOTAL SHEETS	SHEET NO.
*	**	WINNEBAGO	300	28A
			CONTRACT NO. 6472	

TEMPORARY EMERGENCY TURNOUT

5A - STAGING

STA 2442+72
STA 2525+74

EXISTING MEDIAN CROSSOVER
I-39



MODEL: Default
FILE NAME: p:\winroom\dot\illinois.gov\PWIDOT\Documents\DOT_Offices\District_2\Projects\64172\CAD\Drawings\Drawings\5A-172-shr-staging-Typicals-MOT.dgn

USER NAME = ankneyde	DESIGNED - _____	REVISED - _____
PLOT SCALE = 103.0252' / in	DRAWN - _____	REVISED - _____
PLOT DATE = Dec-18-2019 07:36:12 AM	CHECKED - _____	REVISED - _____
	DATE - _____	REVISED - _____

STATE OF ILLINOIS
DEPARTMENT OF TRANSPORTATION

TYPICAL SECTIONS

SCALE: _____ SHEET 2 OF 11 SHEETS STA. _____ TO STA. _____

F.A. RTE.	SECTION	COUNTY	TOTAL SHEETS	SHEET NO.
*	**	WINNEBAGO	300	122A
			CONTRACT NO. 04472A	

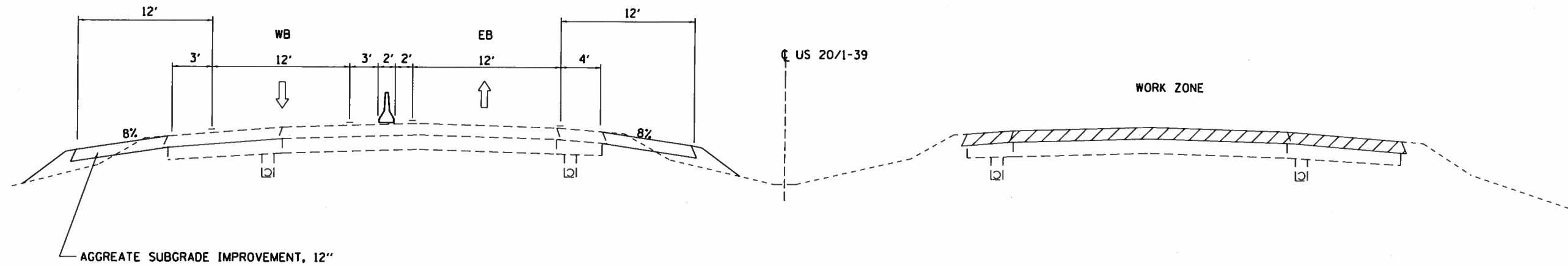
ILLINOIS FED AID PROJECT * F.A.I. 39, F.A.P. 301, F.A.S. 1045A ** (201-1.2.3)RS-1 & (4.4-1.5)RS-2

ADDED SHEET 1/6/20

TEMPORARY EMERGENCY TURNOUT

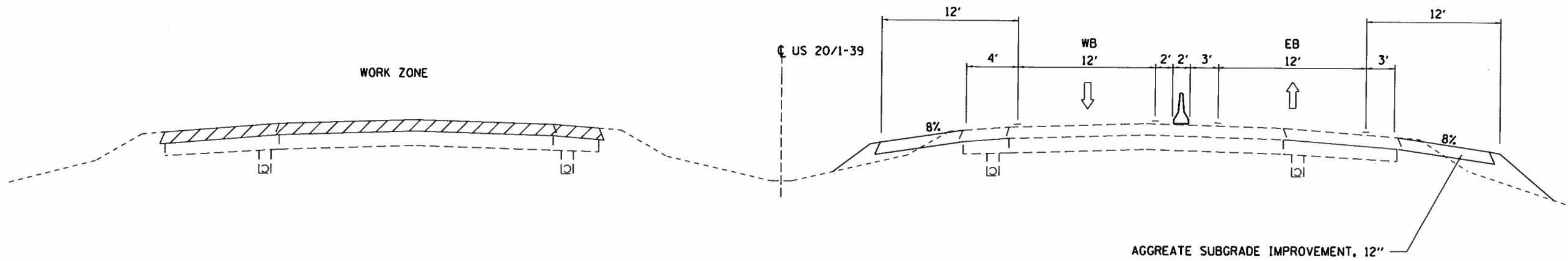
US 20/I-39 EB/WB
STAGE 6A

1148+00
2658+50



US 20/I-39 EB/WB
STAGE 6B

1148+00
2658+50



MODEL: Default
FILE NAME: P:\w\hamosm.dgn
PROJECT: ILLINOIS DEPARTMENT OF TRANSPORTATION
DRAWING: ILLINOIS DEPARTMENT OF TRANSPORTATION
SUBJECT: MAINTENANCE OF TRAFFIC - STAGE 6A & 6B
DATE: 11/17/2019 09:36:26 AM

USER NAME = ankneyde	DESIGNED -	REVISED -
PLOT SCALE = 102.8268' / in.	DRAWN -	REVISED -
PLOT DATE = Dec-17-2019 09:36:26 AM	CHECKED -	REVISED -
	DATE -	REVISED -

STATE OF ILLINOIS
DEPARTMENT OF TRANSPORTATION

MAINTENANCE OF TRAFFIC - STAGE 6A & 6B
TYPICAL SECTIONS - EB /WB

SCALE:	SHEET 12	OF 13 SHEETS	STA.	TO STA.
--------	----------	--------------	------	---------

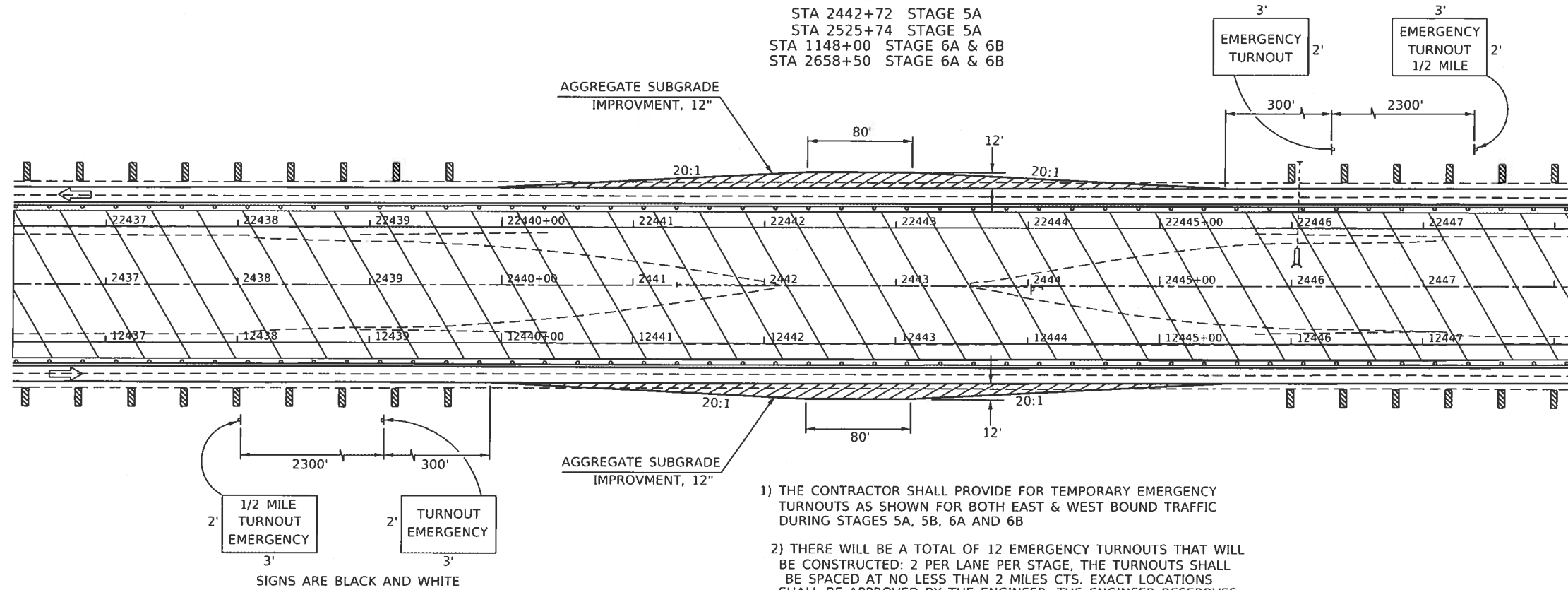
F.A. RTE.	SECTION	COUNTY	TOTAL SHEETS	SHEET NO.
*	**	WINNEBAGO	300	125A
		CONTRACT NO.	67L72	

ILLINOIS FED. AID PROJECT
* F.A.I. 39, F.A.P. 301, F.A.S. 1045A ** (201-1.2.3)RS-1 & (4.4-1.5)RS-2
ADDED SHEET 1/6/20

TEMPORARY EMERGENCY TURNOUTS

STA 2442+72 STAGE 5A
STA 2525+74 STAGE 5A
STA 1148+00 STAGE 6A & 6B
STA 2658+50 STAGE 6A & 6B

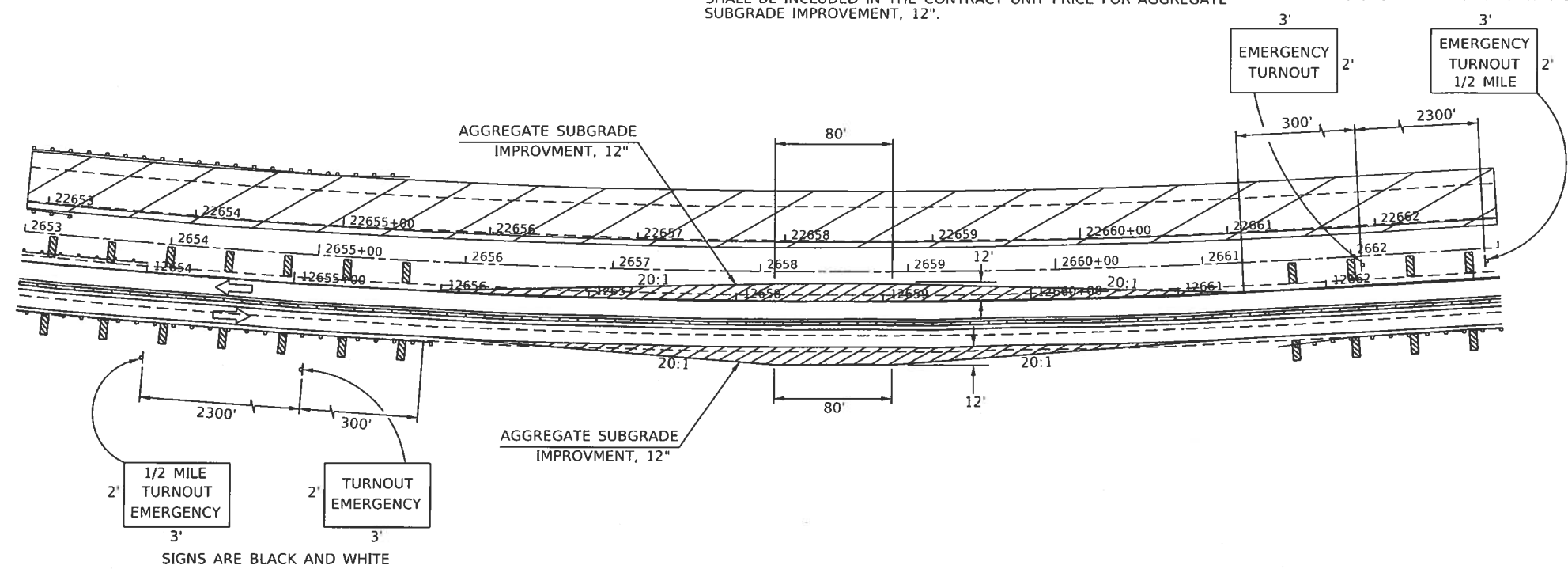
SIGNS ARE BLACK AND WHITE



- 1) THE CONTRACTOR SHALL PROVIDE FOR TEMPORARY EMERGENCY TURNOUTS AS SHOWN FOR BOTH EAST & WEST BOUND TRAFFIC DURING STAGES 5A, 5B, 6A AND 6B
- 2) THERE WILL BE A TOTAL OF 12 EMERGENCY TURNOUTS THAT WILL BE CONSTRUCTED: 2 PER LANE PER STAGE, THE TURNOUTS SHALL BE SPACED AT NO LESS THAN 2 MILES CTS. EXACT LOCATIONS SHALL BE APPROVED BY THE ENGINEER. THE ENGINEER RESERVES THE RIGHT TO SELECT ALTERNATIVE LOCATIONS. **
- 3) ALL LABOR, MATERIALS, (INCLUDING EARTH TO BUILD UP THE TURNOUT) AND EQUIPMENT REQUIRED TO CONSTRUCT, MAINTAIN AND REMOVE THE TEMPORARY EMERGENCY TURNOUTS AND SIGNING AS SHOWN SHALL BE INCLUDED IN THE CONTRACT UNIT PRICE FOR AGGREGATE SUBGRADE IMPROVEMENT, 12".

SIGNS ARE BLACK AND WHITE

SIGNS ARE BLACK AND WHITE



SIGNS ARE BLACK AND WHITE

MODEL: D:\p\w\winroom\dot\illinois.gov\PNIDOT\Documents\DOT_Offices\District_3\Projects\644.171\CD\Drawings\DOT\Project\644.171_sht-details.dgn

USER NAME = ankneyde	DESIGNED -	REVISED -
PLOT SCALE = 103 0252' / in	DRAWN -	REVISED -
PLOT DATE = Dec-18-2019 08:01:15 AM	CHECKED -	REVISED -
	DATE -	REVISED -

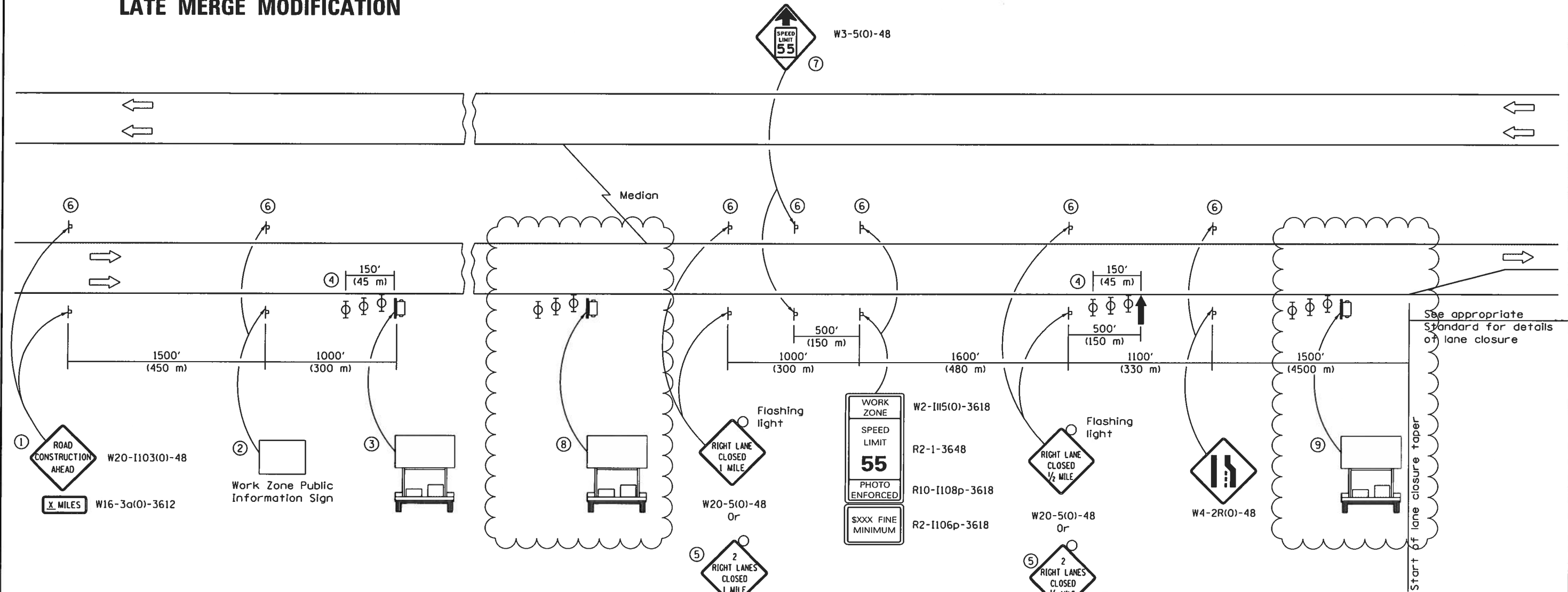
STATE OF ILLINOIS
DEPARTMENT OF TRANSPORTATION

TEMPORARY EMERGENCY TURNOUTS

SCALE: _____ SHEET 1 OF 1 SHEETS STA. _____ TO STA. _____

F.A. RTE.	SECTION	COUNTY	TOTAL SHEETS	SHEET NO.
-	-	WINNEBAGO	300	266A
ILLINOIS FED AID PROJECT			CONTRACT NO. 6442	

LATE MERGE MODIFICATION



SYMBOLS

- ↑ Arrow board
- ▭ Portable changeable message sign
- ⊥ Sign
- ⊕ Type II barricade, drum, or vertical barricade with monodirectional flashing light

- ① The Road Construction Ahead sign shall be located 3 to 5 miles in advance of the project limits.
- ② The message and size of the Work Zone Public Information Sign shall be as specified by the Department.
- ③ The message board shall be used to display status of lanes within the project. The primary messages shall be:
"Right Lane Closed" / " x Miles Ahead"
"Left Lane Closed" / " x Miles Ahead"
"All Lanes Open"
- ④ Three, Type II barricades, drums, or vertical barricades at 50' (15 m) centers.
- ⑤ This sign shall be used when 2 lanes are closed.
- ⑥ This sign shall be omitted when median width is less than 10' (3 m).
- ⑦ This sign shall only be used if the existing speed limit is greater than 65 mph.

- ⑧ The message board shall be used to display status of lanes within the project. The primary messages shall be:
"Use Both Lanes" / "Merge At Taper"
- ⑨ The message board shall be used to display status of lanes within the project. The primary messages shall be:
"Merge Here" / "Take Turns"

LOCATION
 STAGE 3 NB-WB LOOP
 STAGE 5A NB
 STAGE 5B NB
 STAGE 6B EB

GENERAL NOTES

This detail is used at the locations as specified as a modification to standard 701400. When the left lane is closed, LEFT LANE CLOSED signs shall be substituted for the RIGHT LANE CLOSED signs.

The first two signs and the message board are stationary.

The last four signs and arrow board shall be moved as necessary to maintain the required distance from the start of the lane closure taper(s).

All dimensions are in inches (millimeters) unless otherwise shown.

The additional changeable message boards shall be paid for per CAL DA for CHANGEABLE MESSAGE SIGN.

**APPROACH TO
 LANE CLOSURE,
 FREEWAY/EXPRESSWAY
 STANDARD 701400 LATE MERGE**

MODEL: D:\net\... FILE NAME: ...

USER NAME = ankryde	DESIGNED -	REVISED -
DRAWN -	REVISED -	
PLOT SCALE = 103.0252' / in.	CHECKED -	REVISED -
PLOT DATE = Dec-18-2019 01:34:07 PM	DATE -	REVISED -

**STATE OF ILLINOIS
 DEPARTMENT OF TRANSPORTATION**

**APPROACH TO LANE CLOSURE, FREEWAY / EXPRESSWAY
 STANDARD 701400 LATE MERGE**

SCALE: _____ SHEET 1 OF 1 SHEETS STA. _____ TO STA. _____

F.A. RTE.	SECTION	COUNTY	TOTAL SHEETS	SHEET
	**	WINNEBAGO	300	266B
			CONTRACT NO. 6472	