

STATE OF ILLINOIS
DEPARTMENT OF TRANSPORTATION

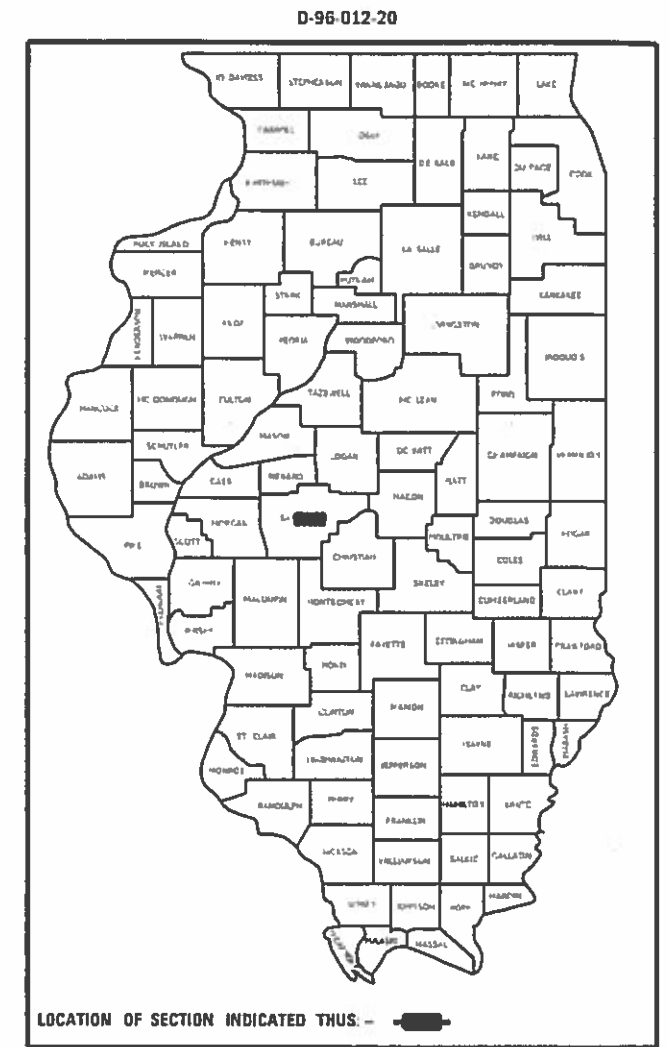
FAI RTE.	SECTION	COUNTY	TOTAL SHEETS	SHEET NO.
72	(84-9-4) PP	SANGAMON	6	1
		ILLINOIS	CONTRACT NO. 72L50	

FOR INDEX OF SHEETS, SEE SHEET NO. ___

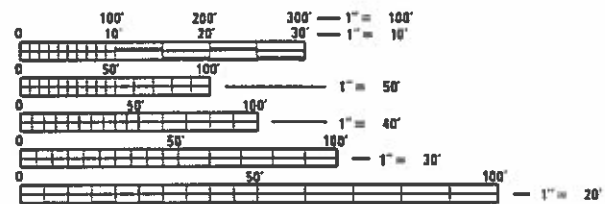
**PROPOSED
HIGHWAY PLANS**

FAI 72 (I 72)
SECTION (84-9-4) PP
CLASS A PATCHES

SANGAMON COUNTY
C-96-029-20

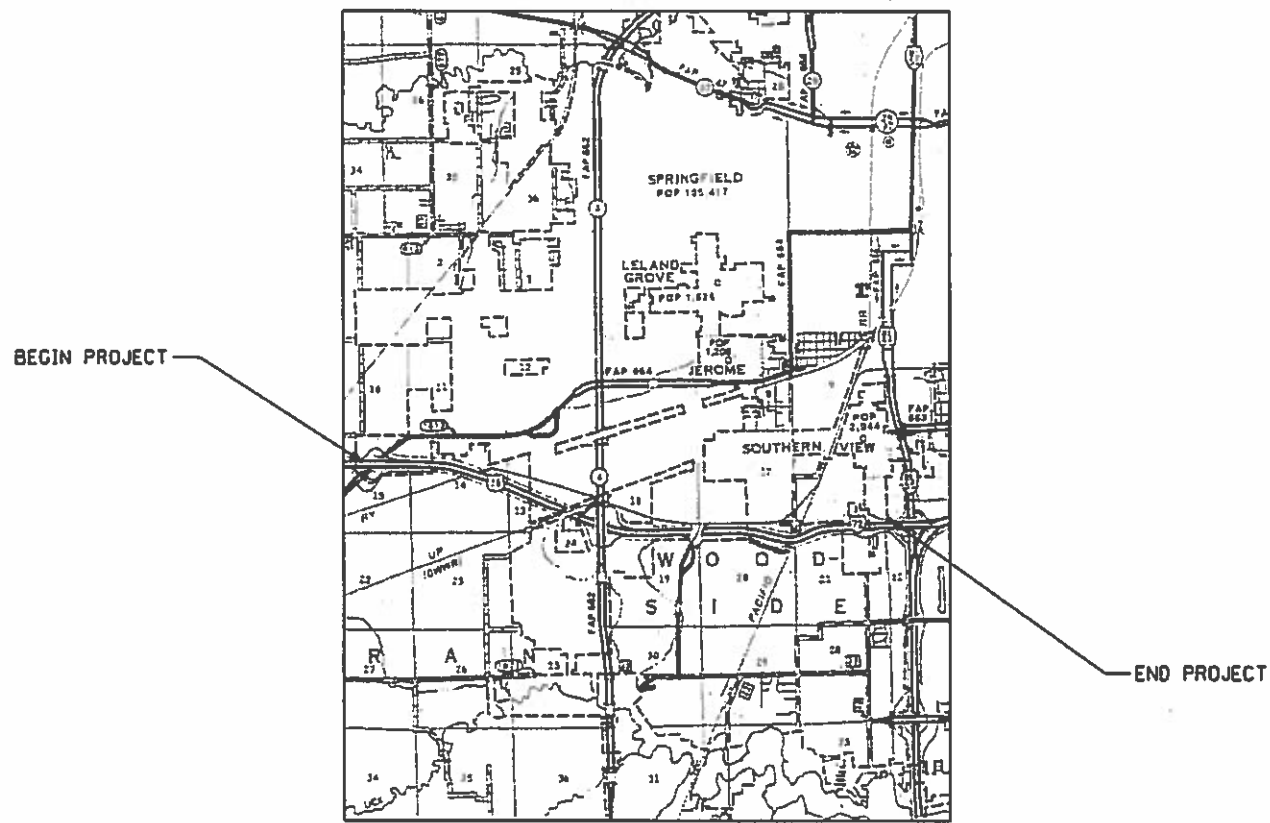


ADT = 20,100
SU = 2,150
MU = 1,950



FULL SIZE PLANS HAVE BEEN PREPARED USING STANDARD ENGINEERING SCALES. REDUCED SIZED PLANS WILL NOT CONFORM TO STANDARD SCALES. IN MAKING MEASUREMENTS ON REDUCED PLANS, THE ABOVE SCALES MAY BE USED.

J.U.L.I.E.
JOINT UTILITY LOCATION INFORMATION FOR EXCAVATORS
1-800-892-0123
OR 811



GROSS LENGTH = 28,370.00 FT. = 5.373 MILE
NET LENGTH = 28,370.00 FT. = 5.373 MILE

PROJECT ENGINEER: MIKE IRWIN
PROJECT MANAGER: TIM SHARP

CONTRACT NO. 72L50

STATE OF ILLINOIS
DEPARTMENT OF TRANSPORTATION

SUBMITTED October 23, 2019

[Signature]
REGIONAL ENGINEER

[Signature]
ENGINEER OF DESIGN AND ENVIRONMENT

[Signature]
DIRECTOR OF HIGHWAYS PROJECT IMPLEMENTATION

PRINTED BY THE AUTHORITY
OF THE STATE OF ILLINOIS

INDEX




SHEET NO.	DESCRIPTION
1.	COVER SHEET
2.	INDEX, STANDARDS, SIGNATURES
3.	SUMMARY OF QUANTITIES
4.	SCHEDULES
5.	LOCATION MAP
6.	TYPICAL SECTIONS

STANDARDS

STANDARD NO.	DESCRIPTION
442001-04	CLASS A PATCHES
701101-05	OFF-RD OPERATIONS, MULTILINE, 15' TO 24" FROM EDGE OF PAVEMENT
701106-02	OFF-RD OPERATIONS, MULTILINE, MORE THAN 15' AWAY
701400-09	APPROACH TO LANE CLOSURE, FREEWAY/EXPRESSWAY
701401-12	LANE CLOSURE, FREEWAY/EXPRESSWAY
701411-09	LANE CLOSURE, MULTILANE AT ENTRANCE OF EXIT RAMP FOR SPEEDS > 45 MPH
701901-08	TRAFFIC CONTROL DEVICES

MIXTURE REQUIREMENTS

THE FOLLOWING MIXTURE REQUIREMENTS ARE APPLICABLE FOR THIS PROJECT		
LOCATION:	SHOULDER REPAIR	SHOULDER REPAIR
MIXTURE USE(S):	LOWER LIFTS	TOP 2"
AC/PG:	PG 64-22	PG 64-22
DESIGN AIR VOIDS:	4.0% @ N50	4.0% @ N50
MIXTURE COMPOSITION:	IL 19.0	IL 9.5
FRICTION AGGREGATE:	N/A	MIX "C"
QUALITY MANAGEMENT	QC/QA	QC/QA

STATE OF ILLINOIS DEPARTMENT OF TRANSPORTATION DIVISION OF HIGHWAYS DISTRICT 6	
EXAMINED <u>10/17</u>	20 <u>19</u>
 ENGINEER OF OPERATIONS	
EXAMINED <u>10-21</u>	20 <u>19</u>
 ENGINEER OF PROJECT IMPLEMENTATION	
EXAMINED <u>October 21</u>	20 <u>19</u>
 ENGINEER OF PROGRAM DEVELOPMENT	

MILE	LANE	LENGTH	WIDTH	AREA	CLASS A, 16 INCH			SAW CUTS	PAVEMENT
					TY II	TY III	TY IV		
MARKER	DL/ML/PL	(FT)	(FT)	(S.Y.)	(S.Y.)	(S.Y.)	(S.Y.)	(FT)	(S.Y.)
I-72 EASTBOUND - SANGAMON COUNTY									
94.8	CHATHAM RD OVERHEAD								
95.0	DL	6	12	8.0	8.0	--	--	60.0	8.0
95.0	PL	6	12	8.0	8.0	--	--	60.0	8.0
95.1	PL	6	12	8.0	8.0	--	--	60.0	8.0
95.1	DL	6	12	8.0	8.0	--	--	60.0	8.0
95.2	DL	8	12	10.7	10.7	--	--	64.0	10.7
95.2	DL	8	12	10.7	10.7	--	--	64.0	10.7
95.3	DL	6	12	8.0	8.0	--	--	60.0	8.0
95.3	DL	6	12	8.0	8.0	--	--	60.0	8.0
95.4	DL	6	12	8.0	8.0	--	--	60.0	8.0
95.5	DL	6	12	8.0	8.0	--	--	60.0	8.0
95.5	DL	6	12	8.0	8.0	--	--	60.0	8.0
95.6	DL	6	12	8.0	8.0	--	--	60.0	8.0
95.6	DL	6	12	8.0	8.0	--	--	60.0	8.0
95.6	DL	6	12	8.0	8.0	--	--	60.0	8.0
95.6	PL	6	12	8.0	8.0	--	--	60.0	8.0
95.7	EXIT 96 MACARTHUR OVERHEAD								
95.7	DL	6	12	8.0	8.0	--	--	60.0	8.0
95.7	PL	6	12	8.0	8.0	--	--	60.0	8.0
95.8	PL	6	6	4.0	4.0	--	--	36.0	4.0
95.8	DL	6	12	8.0	8.0	--	--	60.0	8.0
95.9	DL	6	12	8.0	8.0	--	--	60.0	8.0
95.9	PL	8	12	10.7	10.7	--	--	64.0	10.7
95.9	PL	6	12	8.0	8.0	--	--	60.0	8.0
95.9	PL	8	12	10.7	10.7	--	--	64.0	10.7
95.9	PL	6	12	8.0	8.0	--	--	60.0	8.0
95.9	DL	6	12	8.0	8.0	--	--	60.0	8.0
96.0	STRUCTURE 084-0075 OVER RR								
96.0	DL	6	12	8.0	8.0	--	--	60.0	8.0
96.0	PL	6	12	8.0	8.0	--	--	60.0	8.0
96.2	DL	10	12	13.3	13.3	--	--	68.0	13.3
96.7	2ND ST OVERHEAD								
TOTAL E.B.					236.0	0.0		1680.0	236.0

MILE	LANE	LENGTH	WIDTH	AREA	CLASS A, 16 INCH			SAW CUTS	PAVEMENT
					TY II	TY III	TY IV		
MARKER	DL/ML/PL	(FT)	(FT)	(S.Y.)	(S.Y.)	(S.Y.)	(S.Y.)	(FT)	(S.Y.)
I-72 WESTBOUND - SANGAMON COUNTY									
96.7	2ND ST OVERHEAD								
96.3	DL	6	12	8.0	8.0	--	--	60.0	8.0
96.2	DL	8	12	10.7	10.7	--	--	64.0	10.7
96.2	DL	6	12	8.0	8.0	--	--	60.0	8.0
96.2	PL	6	12	8.0	8.0	--	--	60.0	8.0
96.2	DL	6	12	8.0	8.0	--	--	60.0	8.0
96.2	PL	6	12	8.0	8.0	--	--	60.0	8.0
96.0	STRUCTURE 084-0074 OVER RR								
95.9	DL	6	12	8.0	8.0	--	--	60.0	8.0
95.9	PL	6	12	8.0	8.0	--	--	60.0	8.0
95.9	DL	6	12	8.0	8.0	--	--	60.0	8.0
95.9	PL	8	12	10.7	10.7	--	--	64.0	10.7
95.9	DL	7	12	9.3	9.3	--	--	62.0	9.3
95.8	PL	8	12	10.7	10.7	--	--	64.0	10.7
95.8	DL	6	12	8.0	8.0	--	--	60.0	8.0
95.8	DL	6	12	8.0	8.0	--	--	60.0	8.0
95.7	MACARTHUR BLVD OVERHEAD								
95.7	DL	6	12	8.0	8.0	--	--	60.0	8.0
95.6	DL	6	12	8.0	8.0	--	--	60.0	8.0
95.6	DL	12	12	16.0	--	16.0	--	72.0	16.0
95.6	DL	6	12	8.0	8.0	--	--	60.0	8.0
95.6	DL	6	12	8.0	8.0	--	--	60.0	8.0
95.6	DL	6	12	8.0	8.0	--	--	60.0	8.0
95.6	PL	6	12	8.0	8.0	--	--	60.0	8.0
95.5	DL	6	12	8.0	8.0	--	--	60.0	8.0
95.5	DL	6	12	8.0	8.0	--	--	60.0	8.0
95.5	PL	6	12	8.0	8.0	--	--	60.0	8.0
95.4	DL	6	12	8.0	8.0	--	--	60.0	8.0
95.4	DL	7	12	9.3	9.3	--	--	62.0	9.3
95.4	DL	6	12	8.0	8.0	--	--	60.0	8.0
95.3	DL	6	12	8.0	8.0	--	--	60.0	8.0
95.3	DL	7	12	9.3	9.3	--	--	62.0	9.3
95.2	DL	6	12	8.0	8.0	--	--	60.0	8.0
95.2	PL	6	12	8.0	8.0	--	--	60.0	8.0
95.1	DL	6	12	8.0	8.0	--	--	60.0	8.0
95.1	PL	6	12	8.0	8.0	--	--	60.0	8.0
94.8	CHATHAM RD OVERHEAD								
94.6	DL	6	12	8.0	8.0	--	--	60.0	8.0
94.6	PL	6	12	8.0	8.0	--	--	60.0	8.0
TOTAL W.B.					284.0	16.0		2130.0	300.0
ADDITIONAL 20% - TYPE II PATCHES					112.0			840.0	112.0
TOTAL E.B & W.B.					632.0	16.0		4650.0	648.0

MODEL: Default
 FILE NAME: S:\CONTRACTS\74012150 - I-72 (I-72) - SANGAMON CO - CLASS A PAVEMENT\74012150.dwg
 USER: sharpd
 PLOT SCALE: 1/8" = 1'-0"
 PLOT DATE: 10/23/2019

DESIGNED - _____	REVISED - _____
DRAWN - _____	REVISED - _____
CHECKED - _____	REVISED - _____
DATE - _____	REVISED - _____

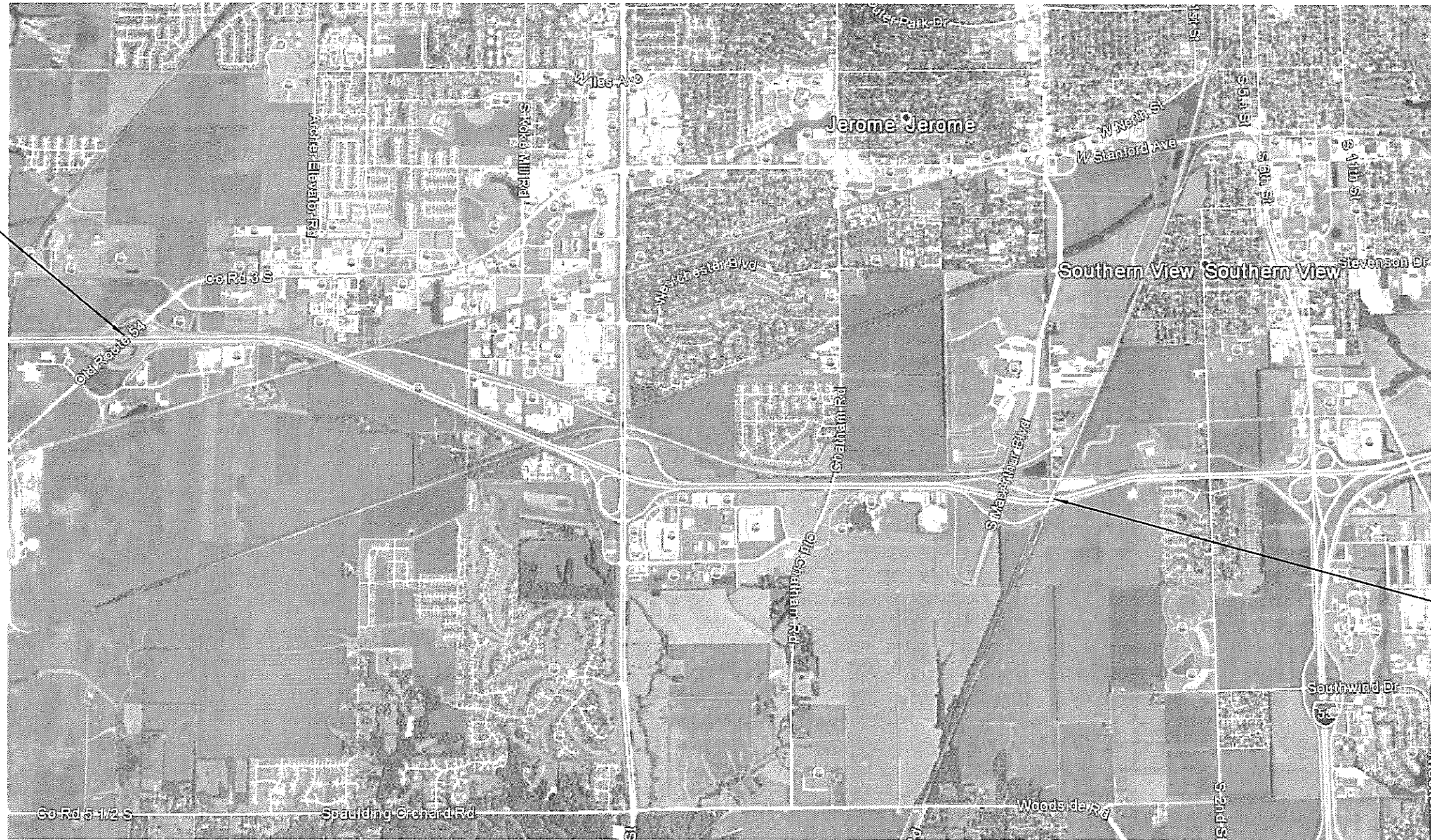
STATE OF ILLINOIS
DEPARTMENT OF TRANSPORTATION

SCHEDULES

SCALE _____ SHEET _____ OF _____ SHEETS STA _____ TO STA _____

F.A.I. RTE.	SECTION	COUNTY	TOTAL SHEETS	SHEET NO.
72	(B4-9-4) PP	SANGAMON	6	4
CONTRACT NO. 72L50			ILLINOIS FED. AID PROJECT	

BEGIN PROJECT



END PROJECT

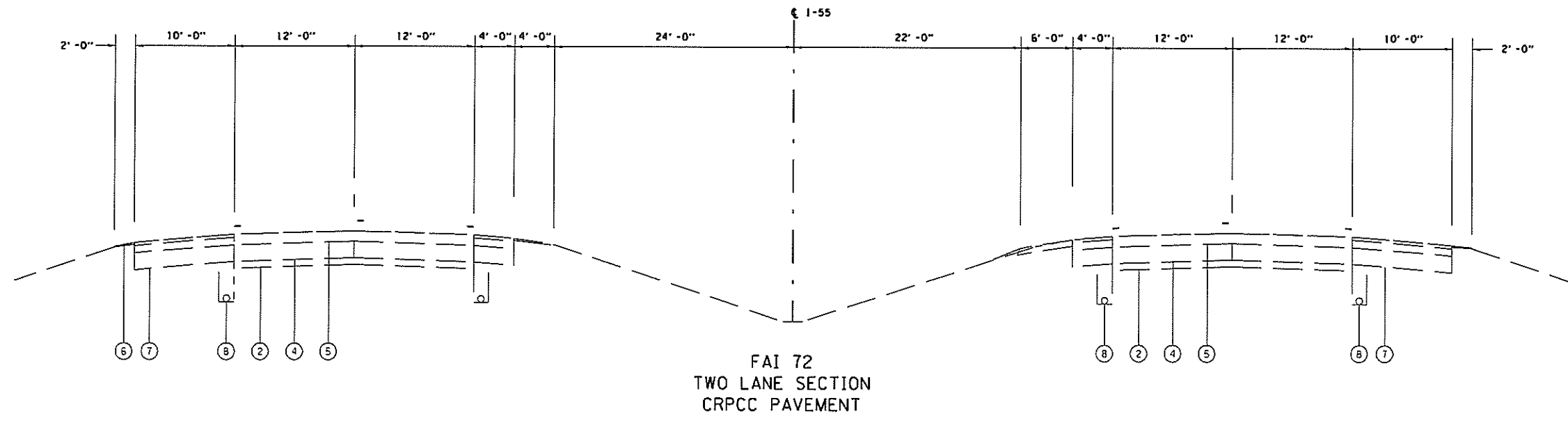
MODEL: InRoads
 FILE: S:\COURTBAULT CAD\032150 - FAI 72 (1-2) - SANGAMON CO - CLASS & PATCHES\032150.dwg Location map.dwg

USER NAME = sharptd	DESIGNED - _____	REVISED - _____
PLOT SCALE = 1/8" = 1' / in	DRAWN - _____	REVISED - _____
PLOT DATE = 10/23/2019	CHECKED - _____	REVISED - _____
	DATE - _____	REVISED - _____

STATE OF ILLINOIS
DEPARTMENT OF TRANSPORTATION

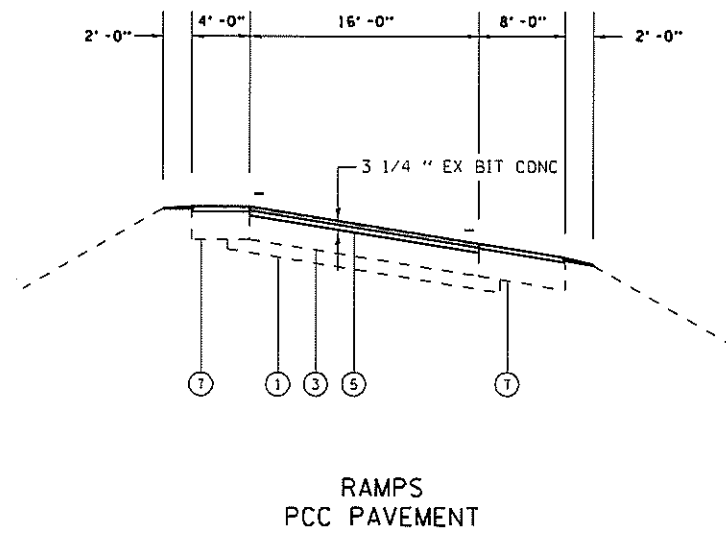
LOCATION MAP			
SCALE _____	SHEET _____	OF _____	SHEETS
STA _____	TO STA _____		

F A I RTE.	SECTION	COUNTY	TOTAL SHEETS	SHEET NO.
72	(84-9-4) PP	SANGAMON	6	5
CONTRACT NO. 72L50				
ILLINOIS FED AID PROJECT				



LEGEND

- ① EX STABILIZED SUB-BASE 4"
- ② EX AGGREGATE SUB-BASE 4"
- ③ EX PCC PAVEMENT 10"
- ④ EX CRPCC PAVEMENT
- ⑤ EX HOT-MIX ASPHALT SURFACE COURSE (VARIABLE THICKNESS)
- ⑥ EX AGGREGAE SHOULDERS
- ⑦ EX HOT-MIX ASPHALT SHOULDERS
- ⑧ EX PIPE UNDERDRAIN



FILE NAME =	USER NAME = shorptd	DESIGNED -	REVISED -	STATE OF ILLINOIS DEPARTMENT OF TRANSPORTATION	TYPICALS		F.A.I. RTE.	SECTION	COUNTY	TOTAL SHEETS	SHEET NO.
S:\CONTRMINT_CAD\72L50 - FAI 72 (1 72)	SANGAMON CO. - CLASS A PATCHES\PLANS\72L50	ORAWM\picals.dgn	REVISED -		72	184-9-41 PP	SANGAMON	6	6		
Default	PLOT SCALE = 60.0000' / in.	CHECKED -	REVISED -		SCALE: _____ SHEET _____ OF _____ SHEETS STA. _____ TO STA. _____		CONTRACT NO. 72L50		ILLINOIS FED. AID PROJECT		
	PLOT DATE = 10/8/2019	DATE -	REVISED -								