

103

STATE OF ILLINOIS
DEPARTMENT OF TRANSPORTATION

F.A.P. RATE	SECTION	COUNTY	TOTAL SHEETS	SHEET NO.
-	D7 PATCHING 2020-7	**	13	1
ILLINOIS			CONTRACT NO. 74935	

* FAP 327, FAP 328A, FAP 328
** CLAY, RICHLAND, LAWRENCE

D-97-011-20

FOR INDEX OF SHEETS, SEE SHEET NO. 2

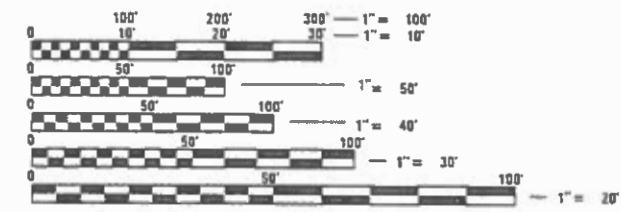
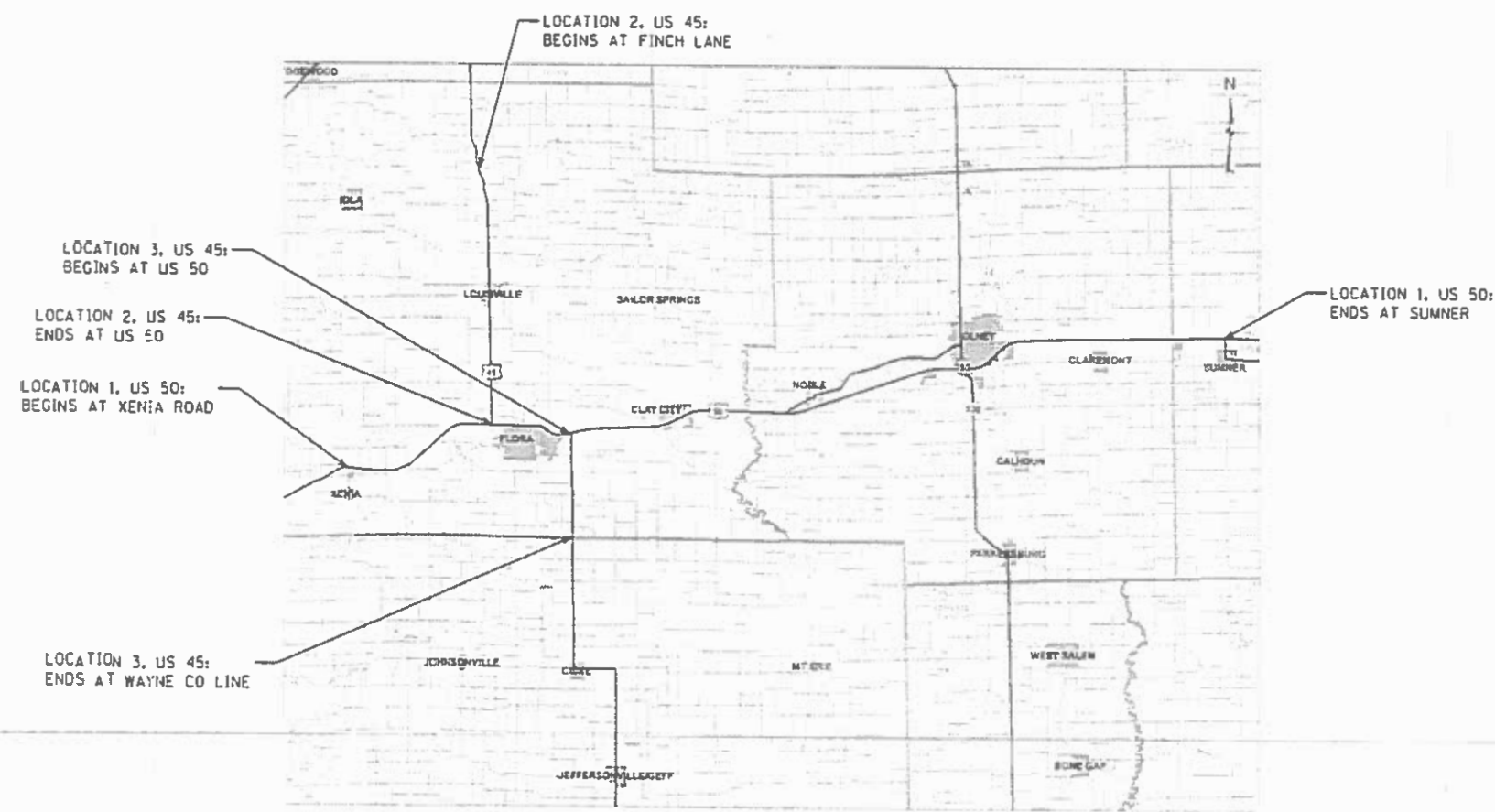
PROPOSED HIGHWAY PLANS

FAP ROUTE 327, 328A, 328 (US 45, US 50, IL 255)
SECTION D7 PATCHING 2020-7

ADT (2017) = 6600

PAVEMENT PATCHING CLAY, RICHLAND, & LAWRENCE COUNTIES

C-97-011-20



FULL SIZE PLANS HAVE BEEN PREPARED USING STANDARD ENGINEERING SCALES. REDUCED SIZED PLANS WILL NOT CONFORM TO STANDARD SCALES. IN MAKING MEASUREMENTS ON REDUCED PLANS, THE ABOVE SCALES MAY BE USED.

J.U.L.I.E.
JOINT UTILITY LOCATION INFORMATION FOR EXCAVATORS
1-800-892-0123
OR 811

PROJECT ENGINEER DEBRA BARRETT
PROJECT MANAGER MICHAEL BUZZARD

CONTRACT NO. 74935

GROSS LENGTH = 317,908 FT. = 60.21 MILES
NET LENGTH = 317,908 FT. = 60.21 MILES

STATE OF ILLINOIS
DEPARTMENT OF TRANSPORTATION

SUBMITTED October 29, 2019
[Signature]
REGIONAL ENGINEER

[Signature]
ENGINEER OF DESIGN AND ENVIRONMENT

[Signature]
DIRECTOR OF HIGHWAYS PROJECT IMPLEMENTATION

PRINTED BY THE AUTHORITY
OF THE STATE OF ILLINOIS

GENERAL NOTES

THE ACTUAL LOCATIONS OF PAVEMENT PATCHING AND FINAL QUANTITIES SHALL BE DETERMINED BY THE ENGINEER IN THE FIELD.

LOCATION:

US 45 - FINCH LN TO US 50 & US 50 TO WAYNE CO LINE
 US 50 - XENIA RD W OF FLORA TO SUMNER

INDEX OF SHEETS

SHEET NO.	DESCRIPTION
1	COVER SHEET
2	INDEX OF SHEETS
3-5	LOCATION MAPS
6	SUMMARY OF QUANTITIES
7-12	SCHEDULES
13	701421 SPECIAL

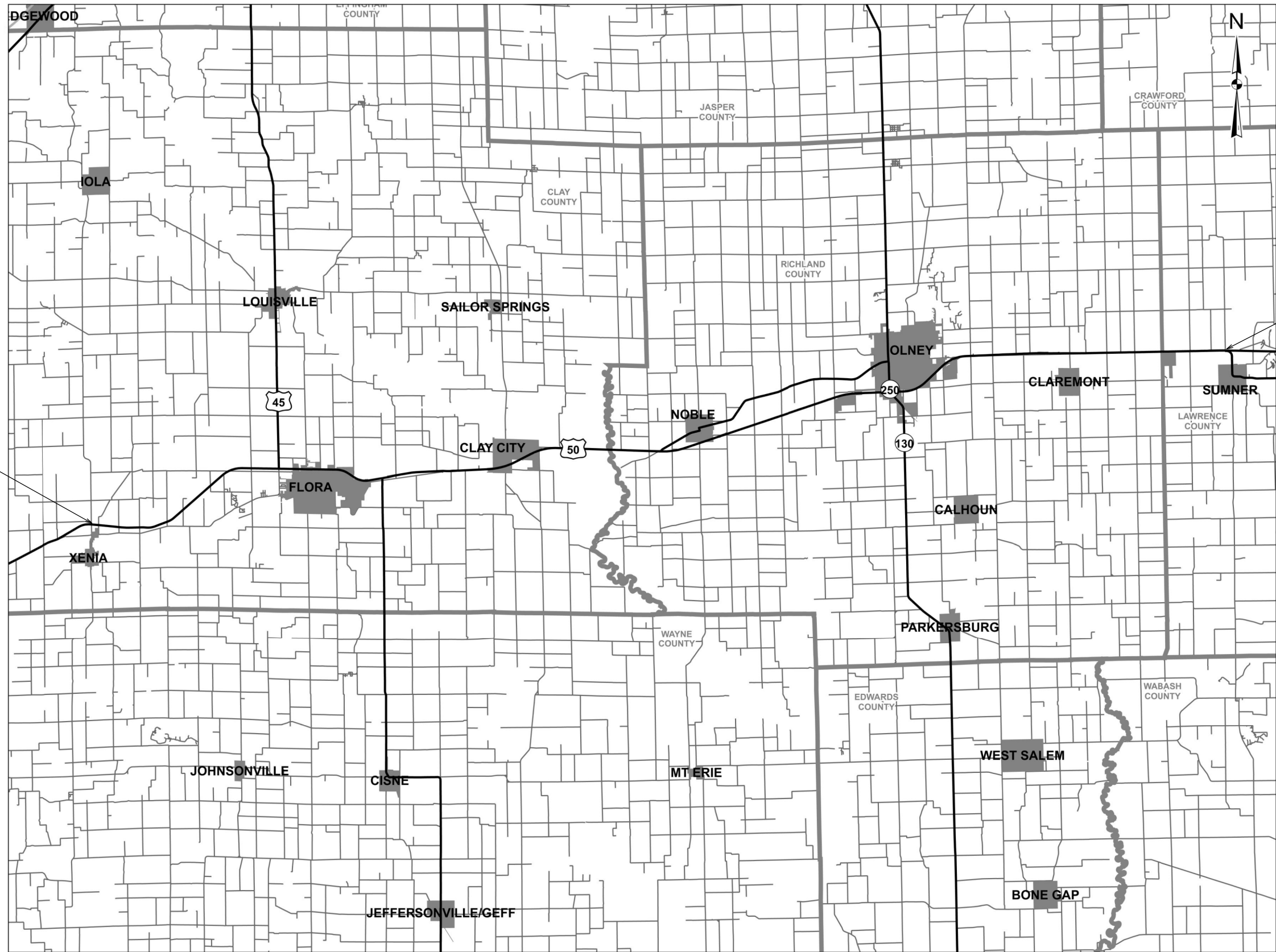
THE FOLLOWING STANDARDS ARE A PART OF THESE PLANS
 AND ARE INCLUDED FOLLOWING SHEET NUMBER 12

STANDARD NO.	DESCRIPTION
000001-07	STANDARD SYMBOLS, ABBREVIATIONS AND PATTERNS
001001-02	AREAS OF REINFORCEMENT BARS
001006	DECIMAL OF AN INCH AND OF A FOOT
420001-09	PAVEMENT JOINTS
420701-03	PAVEMENT WELDED WIRE REINFORCEMENT
442101-09	CLASS B PATCHES
442201-03	CLASS C AND D PATCHES
701001-02	OFF-RD OPERATIONS, 2L, 2W, MORE THAN 15' (4.5 m) AWAY
701006-05	OFF-RD OPERATIONS, 2L, 2W, 15' (4.5 m) TO 24" (600 MM) FROM PAVEMENT EDGE
701201-05	LANE CLOSURE, 2L, 2W, DAY ONLY, FOR SPEEDS >= 45 MPH
701301-04	LANE CLOSURE, 2L, 2W, SHORT TIME OPERATIONS
701421-08	LANE CLOSURE, MULTILANE, DAY OPERATIONS ONLY FOR SPEEDS >= 45 MPH TO 55 MPH
701901-08	TRAFFIC CONTROL DEVICES

* FAP 327, FAP 328A, FAP 328
 ** CLAY, RICHLAND, LAWRENCE

MODEL: Default
 FILE: h:\mfc_p\pub\harron.mxd\illinois.gov\PI\DOT\Documents\DOT_Offices\District_7\Projects\74935\CAAD\Drawings\74935-sht-indexnote.dgn

USER NAME = steffenmk	DESIGNED -	REVISED -	STATE OF ILLINOIS DEPARTMENT OF TRANSPORTATION	INDEX OF SHEETS & GENERAL NOTES				F.A.P. RTE.	SECTION	COUNTY	TOTAL SHEETS	SHEET NO.
	DRAWN -	REVISED -									13	2
PLOT SCALE = 100.0000 ' / in.	CHECKED -	REVISED -									CONTRACT NO. 74935	
PLOT DATE = 10/30/2019	DATE -	REVISED -			SCALE:	SHEET OF SHEETS	STA.	TO STA.		ILLINOIS	FED. AID PROJECT	



LOCATION 1, US 50:
BEGINS AT XENIA ROAD

LOCATION 1, US 50:
ENDS AT SUMNER

MODEL: Default
 FILE: h:\m\c\p\sup\barroom.dwg
 PROJECT: 74935\CADD\DATA\CADD\sheet\74935-sht-cover.dwg

USER NAME = stefenmk	DESIGNED -	REVISED -
	DRAWN -	REVISED -
PLOT SCALE = 100,0000' / in.	CHECKED -	REVISED -
PLOT DATE = 10/30/2019	DATE -	REVISED -

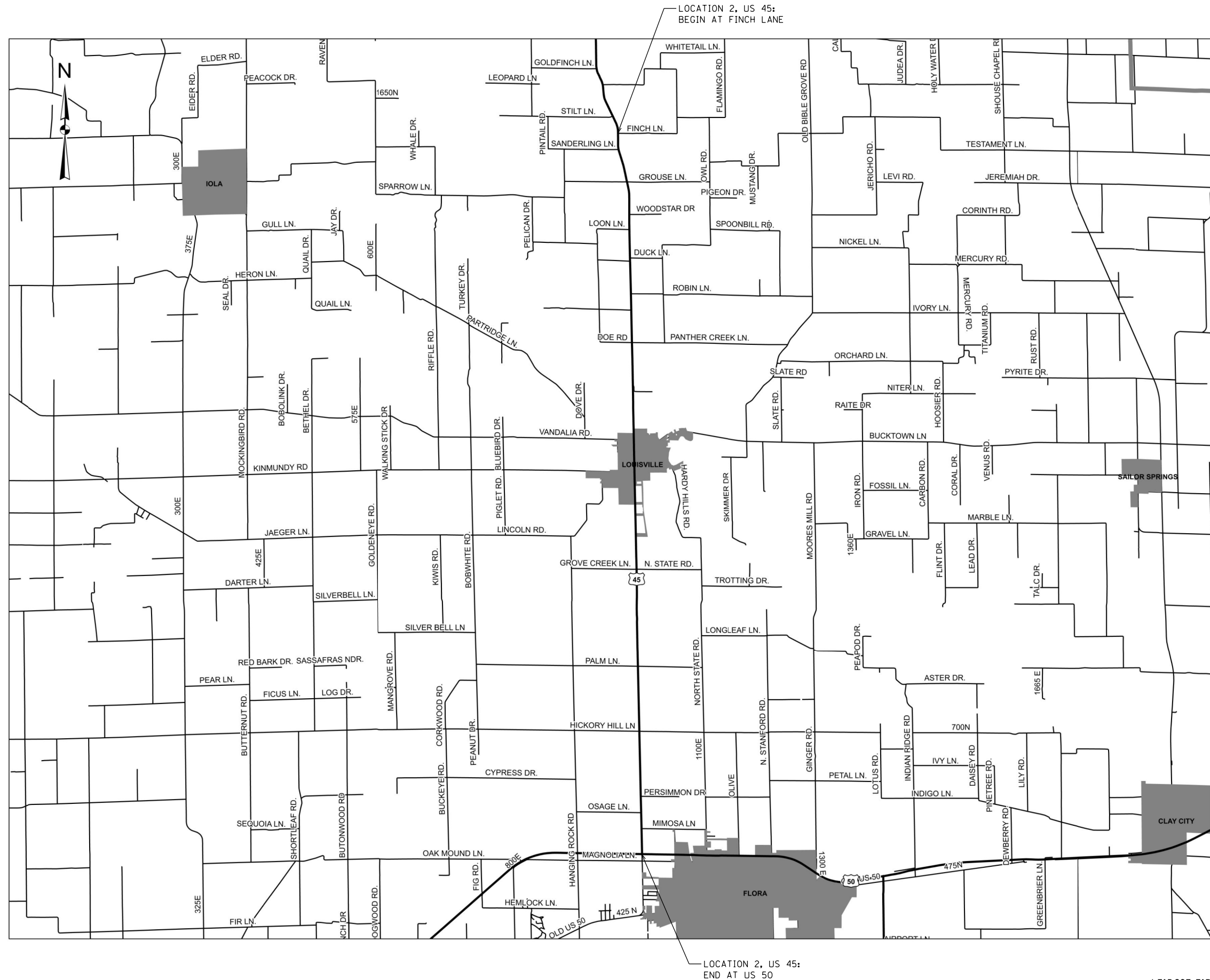
**STATE OF ILLINOIS
DEPARTMENT OF TRANSPORTATION**

**US 50: XENIA ROAD TO SUMNER
LOCATION MAP**

SCALE: SHEET OF SHEETS STA. TO STA.

* FAP 327, FAP 328A, FAP 328
** CLAY, RICHLAND, LAWRENCE

F.A.P. RTE.	SECTION	COUNTY	TOTAL SHEETS	SHEET NO.
*	D7 PATCHING 2020-7	**	13	3
			CONTRACT NO. 74935	
		ILLINOIS FED. AID PROJECT		



MODEL: Default
 FILE: \\blm\c:\pub\blm\room\dat\illinois.gov\p\w\DOT\Documents\DOT_Offices\blm\ctc_7\Projects\74935\CADD\data\CAD\sheet\74935-sht-cover.dgn

USER NAME = stefenmk	DESIGNED -	REVISED -
	DRAWN -	REVISED -
PLOT SCALE = 100,0000' / in.	CHECKED -	REVISED -
PLOT DATE = 10/30/2019	DATE -	REVISED -

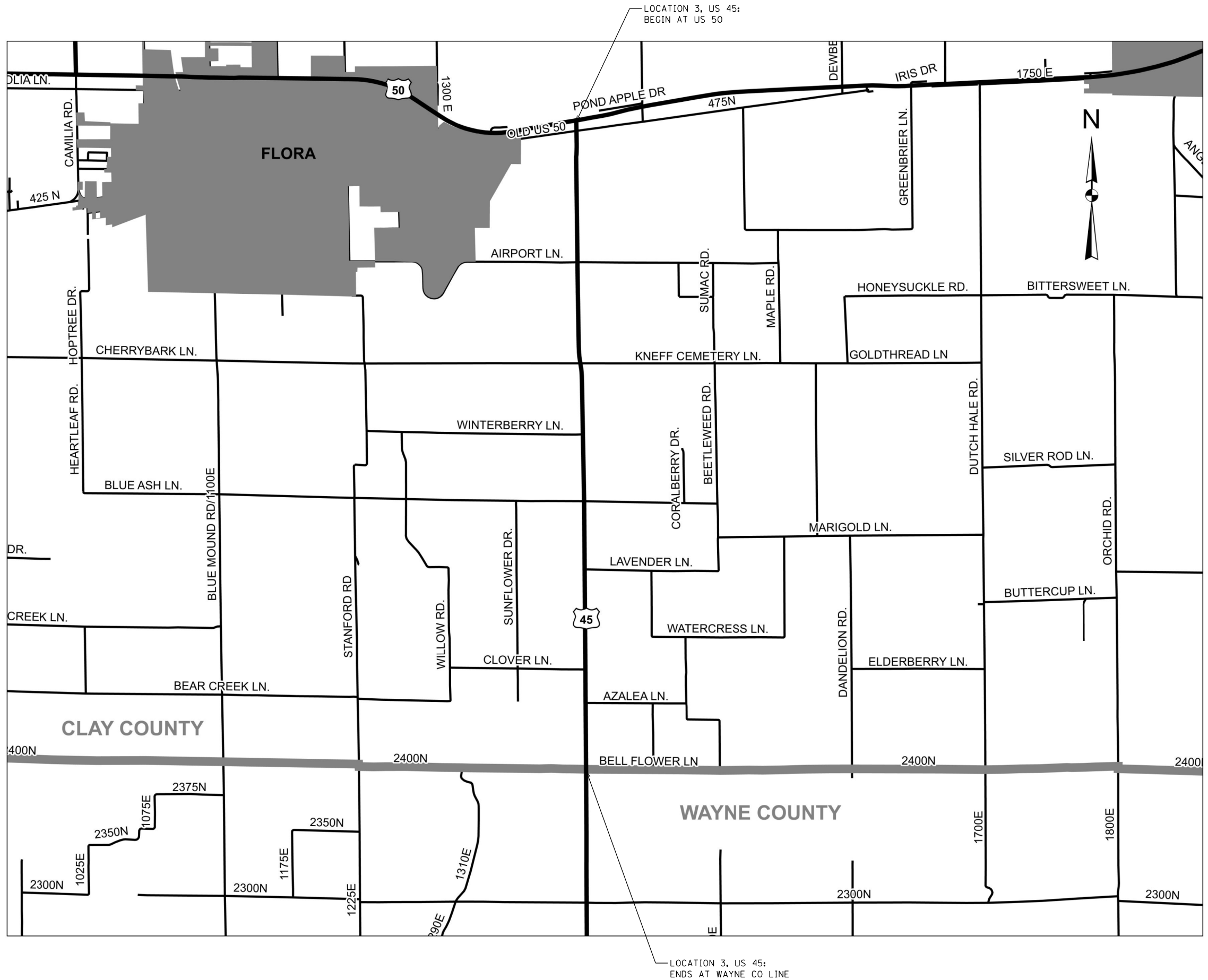
STATE OF ILLINOIS
DEPARTMENT OF TRANSPORTATION

US 45: FINCH LANE TO US 50
LOCATION MAP

SCALE: SHEET OF SHEETS STA. TO STA.

* FAP 327, FAP 328A, FAP 328
 ** CLAY, RICHLAND, LAWRENCE

F.A.P. RTE.	SECTION	COUNTY	TOTAL SHEETS	SHEET NO.
	D7 PATCHING 2020-7	**	13	4
			CONTRACT NO. 74935	
		ILLINOIS	FED. AID PROJECT	



MODEL: Default
 FILE: h:\m\c\p\sup\barroom.dwg
 PROJECT: 74935\CA00Data\CAD\sheet\0774935-shc-cover.dwg

USER NAME = steffemk	DESIGNED -	REVISED -
	DRAWN -	REVISED -
PLOT SCALE = 100,0000' / in.	CHECKED -	REVISED -
PLOT DATE = 10/30/2019	DATE -	REVISED -

STATE OF ILLINOIS
DEPARTMENT OF TRANSPORTATION

US 45: US 50 TO WAYNE CO LINE LOCATION MAP			
SCALE:	SHEET	OF SHEETS	STA. TO STA.

* FAP 327, FAP 328A, FAP 328 ** CLAY, RICHLAND, LAWRENCE				
F.A. RTE.	SECTION	COUNTY	TOTAL SHEETS	SHEET NO.
*	D7 PATCHING 2020-7	**	13	5
CONTRACT NO. 74935				
ILLINOIS FED. AID PROJECT				

ILLINOIS DEPARTMENT OF TRANSPORTATION			TOTAL QUANTITIES					
CODE NO	ITEM	UNIT		0006 Clay County US 50	0006 Richland County US 50	0006 Richland County US 50 (Urban)	0006 Lawrence County US 50	0006 Clay County US 45
44200050	WELDED WIRE REINFORCEMENT	SO YD	1061.4	148	62.7	180		670.7
44201007	CLASS B PATCHES, TYPE II, 13 INCH	SO YD	925.4	229.4	157.4	141.4	85.2	312
44201011	CLASS B PATCHES, TYPE III, 13 INCH	SO YD	478.7	84	36	72		286.7
44201013	CLASS B PATCHES, TYPE IV, 13 INCH	SO YD	582.7	64	26.7	108		384
44201299	DOWEL BARS 1 1/2"	EACH	2940	640	420	420	160	1300
44201803	CLASS D PATCHES, TYPE II, 13 INCH	SO YD	26.8			26.8		
44213200	SAW CUTS	FOOT	8456	1718	1086	1422	416	3814
44213204	TIE BARS 3/4"	EACH	201	22	9	38		132
67100100	MOBILIZATION	L SUM	1	0.3	0.15	0.1	0.05	0.4
70100310	TRAFFIC CONTROL AND PROTECTION, STANDARD	L SUM	1	0.3	0.15	0.1	0.05	0.4
	701421							
70100450	TRAFFIC CONTROL AND PROTECTION, STANDARD	L SUM	1	0.3	0.15	0.1	0.05	0.4
	701201							
70107025	CHANGEABLE MESSAGE SIGN	CAL DA	56	17	8	6	3	22

MODEL: Default
 FILE NAME: P:\p1\p1room.dwg
 PROJECT: 174935\CADData\CAD\Drawings\174935-rlt-S00.dgn

* FAP 327, FAP 328A, FAP 328
 ** CLAY, RICHLAND, LAWRENCE

REV. - MS

USER NAME = steffenk	DESIGNED -	REVISED -
	DRAWN -	REVISED -
PLOT SCALE = 100.0000 ' / in.	CHECKED -	REVISED -
PLOT DATE = 10/30/2019	DATE -	REVISED -

**STATE OF ILLINOIS
 DEPARTMENT OF TRANSPORTATION**

SUMMARY OF QUANTITIES

SCALE: SHEET OF SHEETS STA. TO STA.

F.A.P. RTE.	SECTION	COUNTY	TOTAL SHEETS	SHEET NO.
*	D7 PATCHING 2020-7	**	13	6
			CONTRACT NO. 74935	
ILLINOIS FED. AID PROJECT				

Adjacent Patch	County & Route	Patch Number	Lane	Mile Post	Length (FT)	Width (FT)	Plan Depth (INCHES)	Measured Depth (INCHES)	% Change Thickness	44201803 Class D Patches, Type II, 13" (SQ YD)	44201007 Class B Patches, Type II, 13" (SQ YD)	44201011 Class B Patches, Type III, 13" (SQ YD)	44201013 Class B Patches, Type IV, 13" (SQ YD)	44213204 Tie Bars 3/4" (EACH)	44200050 Welded Wire Reinforcement (SQ YD)	44213200 Saw Cuts (FT)	44201299 Dowel Bars 1 1/2" (EACH)	
Y	Clay 50	1	EB	4.729	9.0	12.0	13.0	13.0	0.00%		12.0					54	20	
Y	Clay 50	2	WB	4.729	9.0	12.0	13.0	13.0	0.00%		12.0					54	20	
Y	Clay 50	3	EB	5.081	7.0	12.0	13.0	13.0	0.00%		9.3					50	20	
Y	Clay 50	4	WB	5.081	7.0	12.0	13.0	13.0	0.00%		9.3					50	20	
Y	Clay 50	5	EB	5.410	6.0	12.0	13.0	13.0	0.00%		8.0					48	20	
Y	Clay 50	6	WB	5.410	6.0	12.0	13.0	13.0	0.00%		8.0					48	20	
Y	Clay 50	7	EB	5.513	10.0	12.0	13.0	13.0	0.00%		13.3					56	20	
Y	Clay 50	8	WB	5.513	8.0	12.0	13.0	13.0	0.00%		10.7					52	20	
Y	Clay 50	9	EB	5.584	6.0	12.0	13.0	13.0	0.00%		8.0					48	20	
Y	Clay 50	10	WB	5.584	6.0	12.0	13.0	13.0	0.00%		8.0					48	20	
Y	Clay 50	11	EB	5.644	6.0	12.0	13.0	13.0	0.00%		8.0					48	20	
Y	Clay 50	12	WB	5.644	6.0	12.0	13.0	13.0	0.00%		8.0					48	20	
Y	Clay 50	13	EB	5.720	6.0	12.0	13.0	13.0	0.00%		8.0					48	20	
Y	Clay 50	14	EB	5.776	6.0	12.0	13.0	13.0	0.00%		8.0					48	20	
Y	Clay 50	15	WB	5.776	6.0	12.0	13.0	13.0	0.00%		8.0					48	20	
Y	Clay 50	16	EB	5.833	6.0	12.0	13.0	13.0	0.00%		8.0					48	20	
Y	Clay 50	17	WB	5.833	6.0	12.0	13.0	13.0	0.00%		8.0					48	20	
Y	Clay 50	18	EB	6.439	8.0	12.0	13.0	13.0	0.00%		10.7					52	20	
Y	Clay 50	19	WB	6.439	8.0	12.0	13.0	13.0	0.00%		10.7					52	20	
Y	Clay 50	20	EB	6.760	12.0	12.0	13.0	13.0	0.00%			16.0			16.0	60	20	
Y	Clay 50	21	WB	6.760	12.0	12.0	13.0	13.0	0.00%			16.0			16.0	60	20	
Y	Clay 50	22	EB	6.900	6.0	12.0	13.0	13.0	0.00%		8.0					48	20	
Y	Clay 50	23	WB	6.900	6.0	12.0	13.0	13.0	0.00%		8.0					48	20	
Y	Clay 50	24	EB	7.140	6.0	12.0	13.0	13.0	0.00%		8.0					48	20	
Y	Clay 50	25	WB	7.140	6.0	12.0	13.0	13.0	0.00%		8.0					48	20	
Y	Clay 50	26	EB	8.850	24.0	12.0	13.0	13.0	0.00%				32.0	11	32.0	84	20	
Y	Clay 50	27	WB	8.850	24.0	12.0	13.0	13.0	0.00%				32.0	11	32.0	84	20	
Y	Clay 45/50	28	NB/WB	8.739	15.0	12.0	13.0	13.0	0.00%			20.0			20.0	66	20	
Y	Clay 50	29	WB	15.226	12.0	12.0	13.0	13.0	0.00%			16.0			16.0	60	20	
Y	Clay 50	30	WB	15.226	12.0	12.0	13.0	13.0	0.00%			16.0			16.0	60	20	
Y	Clay 50	31	EB	17.316	8.0	12.0	13.0	13.0	0.00%			10.7				52	20	
Y	Clay 50	32	WB	17.316	8.0	12.0	13.0	13.0	0.00%			10.7				52	20	
										Totals	0.0	229.4	84.0	64.0	22	148.0	1718.0	640

MODEL: Default
 FILE: \\hpc101\pub\hpc\room\dat\illinois\gov\pww\DOT\Documents\DOT_Offices\Illinois\74935\CAD\Drawings\DOT\74935-sht-schedule.dgn

* FAP 327, FAP 328A, FAP 328
 ** CLAY, RICHLAND, LAWRENCE

USER NAME = steffemk	DESIGNED -	REVISED -	STATE OF ILLINOIS DEPARTMENT OF TRANSPORTATION	PATCHING SCHEDULE - CLAY COUNTY US 50			F.A.P. RTE.	SECTION	COUNTY	TOTAL SHEETS	SHEET NO.	
PLOT SCALE = 100.0000' / in.	DRAWN -	REVISED -		SCALE:	SHEET	OF 12 SHEETS	STA.	TO STA.	**	D7 PATCHING 2020-7	13	7
PLOT DATE = 10/30/2019	CHECKED -	REVISED -		CONTRACT NO. 74935								
	DATE -	REVISED -		ILLINOIS FED. AID PROJECT								

Adjacent Patch	County & Route	Patch Number	Lane	Mile Post	Length (FT)	Width (FT)	Plan Depth (INCHES)	Measured Depth (INCHES)	% Change Thickness	44201803 Class D Patches, Type II, 13" (SQ YD)	44201007 Class B Patches, Type II, 13" (SQ YD)	44201011 Class B Patches, Type III, 13" (SQ YD)	44201013 Class B Patches, Type IV, 13" (SQ YD)	44213204 Tie Bars 3/4" (EACH)	44200050 Welded Wire Reinforcement (SQ YD)	44213200 Saw Cuts (FT)	44201299 Dowel Bars 1 1/2" (EACH)
Y	Richland	50	33	WB	1.741	12.0	13.0	13.0	0.00%			16.0			16.0	60.0	20
Y	Richland	50	34	EB	2.142	6.0	12.0	13.0	0.00%		8.0					48.0	20
Y	Richland	50	35	WB	2.142	6.0	12.0	13.0	0.00%		8.0					48.0	20
	Richland	50	36	WB	2.423	6.0	12.0	13.0	0.00%		8.0					48.0	20
	Richland	50	37	WB	2.893	8.0	12.0	13.0	0.00%		10.7					52.0	20
	Richland	50	38	WB	3.007	20.0	12.0	13.0	0.00%				26.7	9	26.7	76.0	20
	Richland	50	39	WB	4.000	6.0	12.0	13.0	0.00%		8.0					48.0	20
Y	Richland	50	40	EB	4.551	6.0	12.0	13.0	0.00%		8.0					48.0	20
Y	Richland	50	41	WB	4.551	6.0	12.0	13.0	0.00%		8.0					48.0	20
Y	Richland	50	42	EB	4.697	6.0	12.0	13.0	0.00%		8.0					48.0	20
Y	Richland	50	43	WB	4.697	6.0	12.0	13.0	0.00%		8.0					48.0	20
	Richland	50	44	WB	5.231	6.0	12.0	13.0	0.00%		8.0					48.0	20
	Richland	50	45	EB	5.746	6.0	12.0	13.0	0.00%		8.0					48.0	20
	Richland	50	46	EB	5.940	6.0	12.0	13.0	0.00%		8.0					48.0	20
Y	Richland	50	47	EB	5.952	15.0	12.0	13.0	0.00%			20.0			20.0	66.0	20
Y	Richland	50	48	WB	5.952	9.0	12.0	13.0	0.00%		12.0					54.0	20
	Richland	50	49	EB	7.007	7.0	12.0	13.0	0.00%		9.3					50.0	20
	Richland	50	50	WB	7.041	6.0	12.0	13.0	0.00%		8.0					48.0	20
	Richland	50	51	WB	7.598	6.0	12.0	13.0	0.00%		8.0					48.0	20
Y	Richland	50	52	EB	8.522	8.0	12.0	13.0	0.00%		10.7					52.0	20
Y	Richland	50	53	WB	8.522	8.0	12.0	13.0	0.00%		10.7					52.0	20
Totals										0.0	157.4	36.0	26.7	9	62.7	1086.0	420

MODEL: Default
 FILE: \\hpc1\pub\hpc\room\dat\illinois\gov\pww\DOT\Documents\DOT_Offices\Default_7\Projects\74935\CAAD\Bids\74935-sht-schedule.dgn

* FAP 327, FAP 328A, FAP 328
 ** CLAY, RICHLAND, LAWRENCE

USER NAME = steffenmk PLOT SCALE = 100.0000' / in. PLOT DATE = 10/30/2019	DESIGNED -	REVISED -	STATE OF ILLINOIS DEPARTMENT OF TRANSPORTATION	PATCHING SCHEDULE - RICHLAND COUNTY US 50				F.A.P. RTE.	SECTION	COUNTY	TOTAL SHEETS	SHEET NO.
	DRAWN -	REVISED -		*	D7 PATCHING 2020-7	**	13	8				
	CHECKED -	REVISED -		CONTRACT NO. 74935				ILLINOIS FED. AID PROJECT				
DATE -	REVISED -	SCALE:	SHEET	OF	SHEETS	STA.	TO	STA.				

Adjacent Patch Y or blank	County & Route	Patch Number	Lane	Mile Post	Length (FT)	Width (FT)	Plan Depth (INCHES)	Measured Depth (INCHES)	% Change Thickness	44201803 Class D Patches, Type II, 13" (SQ YD)	44201007 Class B Patches, Type II, 13" (SQ YD)	44201011 Class B Patches, Type III, 13" (SQ YD)	44201013 Class B Patches, Type IV, 13" (SQ YD)	44213204 Tie Bars 3/4" (EACH)	44200050 Welded Wire Reinforcement (SQ YD)	44213200 Saw Cuts (FT)	44201299 Dowel Bars 1 1/2" (EACH)
	Richland 50	54	EB	8.622	25.0	12.0	13.0	13.0	0.00%				33.3	12	33.3	86.0	20
	Richland 50	55	WB	8.666	24.0	12.0	13.0	13.0	0.00%				32.0	11	32.0	84.0	20
	Richland 50	56	EB	8.838	12.0	12.0	13.0	13.0	0.00%			16.0			16.0	60.0	20
	Richland 50	57	WBTL	8.854	15.0	12.0	13.0	13.0	0.00%			20.0			20.0	66.0	20
	Richland 50	58	WBTL	8.862	32.0	12.0	13.0	13.0	0.00%				42.7	15	42.7	100.0	20
	Richland 50	59	EB	8.992	6.0	12.0	13.0	13.0	0.00%		8.0					48.0	20
	Richland 50	60	WB	9.070	6.0	12.0	13.0	13.0	0.00%		8.0					48.0	20
	Richland 50	61	WB	9.167	6.0	12.0	13.0	13.0	0.00%		8.0					48.0	20
	Richland 50	62	EB	9.201	6.0	12.0	13.0	13.0	0.00%		8.0					48.0	20
	Richland 50	63	WB	9.291	15.0	12.0	13.0	13.0	0.00%			20.0			20.0	66.0	20
	Richland 50	64	EB	9.294	12.0	12.0	13.0	13.0	0.00%			16.0			16.0	60.0	20
	Richland 50	65	WB	9.319	8.0	12.0	13.0	13.0	0.00%		10.7					52.0	20
	Richland 50	66	EB	9.332	6.0	12.0	13.0	13.0	0.00%		8.0					48.0	20
	Richland 50	67	EB	9.540	5.0	12.0	13.0	13.0	0.00%	6.7						46.0	
	Richland 50	68	WB	9.540	5.0	12.0	13.0	13.0	0.00%	6.7						46.0	
	Richland 50	69	EB	9.610	5.0	12.0	13.0	13.0	0.00%	6.7						46.0	
	Richland 50	70	WB	9.610	5.0	12.0	13.0	13.0	0.00%	6.7						46.0	
	Richland 50	71	WB	9.965	8.0	12.0	13.0	13.0	0.00%		10.7					52.0	20
Y	Richland 50	72	EB	10.163	7.0	12.0	13.0	13.0	0.00%		9.3					50.0	20
Y	Richland 50	73	WB	10.163	10.0	12.0	13.0	13.0	0.00%		13.3					56.0	20
	Richland 50	74	EB	10.230	10.0	12.0	13.0	13.0	0.00%		13.3					56.0	20
	Richland 50	75	WB	10.259	9.0	12.0	13.0	13.0	0.00%		12.0					54.0	20
Y	Richland 50	76	EB	10.278	8.0	12.0	13.0	13.0	0.00%		10.7					52.0	20
Y	Richland 50	77	WB	10.278	8.0	12.0	13.0	13.0	0.00%		10.7					52.0	20
	Richland 50	78	WB	12.019	8.0	12.0	13.0	13.0	0.00%		10.7					52.0	20
Totals										26.8	141.4	72.0	108.0	38	180.0	1422.0	420

MODEL: Default
 FILE: Model: PatchSchedule.dwg
 PROJECT: 74935\CADData\CAD\Drawings\DOT Office\Drawings\74935-PatchSchedule.dwg

* FAP 327, FAP 328A, FAP 328
 ** CLAY, RICHLAND, LAWRENCE

USER NAME = steffemk	DESIGNED -	REVISED -	STATE OF ILLINOIS DEPARTMENT OF TRANSPORTATION	PATCHING SCHEDULE - RICHLAND COUNTY (URBAN) US 50				F.A.P. RTE.	SECTION	COUNTY	TOTAL SHEETS	SHEET NO.
PLOT SCALE = 100,0000' / in.	DRAWN -	REVISED -						*	D7 PATCHING 2020-7	**	13	9
PLOT DATE = 10/30/2019	CHECKED -	REVISED -		SCALE: SHEET OF SHEETS STA. TO STA.				CONTRACT NO. 74935				
	DATE -	REVISED -						ILLINOIS FED. AID PROJECT				

Adjacent Patch	County & Route	Patch Number	Lane	Mile Post	Length (FT)	Width (FT)	Plan Depth (INCHES)	Measured Depth (INCHES)	% Change Thickness	44201803 Class D Patches, Type II, 13" (SQ YD)	44201007 Class B Patches, Type II, 13" (SQ YD)	44201011 Class B Patches, Type III, 13" (SQ YD)	44201013 Class B Patches, Type IV, 13" (SQ YD)	44213204 Tie Bars 3/4" (EACH)	44200050 Welded Wire Reinforcement (SQ YD)	44213200 Saw Cuts (FT)	44201299 Dowel Bars 1 1/2" (EACH)	
	Lawrence 5	79	WB	0.610	10.0	12.0	13.0	13.0	0.00%		13.3					56.0	20	
	Lawrence 5	80	WB	0.624	8.0	12.0	13.0	13.0	0.00%		10.7					52.0	20	
	Lawrence 5	81	EB	0.627	6.0	12.0	13.0	13.0	0.00%		8.0					48.0	20	
Y	Lawrence 50	82	EB	0.636	6.0	12.0	13.0	13.0	0.00%		8.0					48.0	20	
	Lawrence 5	83	EB	1.462	7.0	12.0	13.0	13.0	0.00%		9.3					50.0	20	
	Lawrence 5	84	EB	1.828	7.0	12.0	13.0	13.0	0.00%		9.3					50.0	20	
Y	Lawrence 50	85	EB	1.963	10.0	12.0	13.0	13.0	0.00%		13.3					56.0	20	
Y	Lawrence 50	86	WB	1.963	10.0	12.0	13.0	13.0	0.00%		13.3					56.0	20	
										Totals	0.0	85.2	0.0	0.0	0.0	0.0	416.0	160

MODEL: Default
 FILE: Model: PatchSchedule.dwg
 C:\Users\stefenmk\AppData\Local\Temp\1\Project174935\CADDData\CAD\Drawings\DOT\Office\Drawings\74935-sht-schedule.dwg

* FAP 327, FAP 328A, FAP 328
 ** CLAY, RICHLAND, LAWRENCE

USER NAME = stefenmk	DESIGNED -	REVISED -	STATE OF ILLINOIS DEPARTMENT OF TRANSPORTATION	PATCHING SCHEDULE - LAWRENCE COUNTY			F.A.P. RTE.	SECTION	COUNTY	TOTAL SHEETS	SHEET NO.
PLOT SCALE = 100.0000' / in.	DRAWN -	REVISED -					*	D7 PATCHING 2020-7	**	13	10
PLOT DATE = 10/30/2019	CHECKED -	REVISED -		SCALE: SHEET OF SHEETS STA. TO STA.			CONTRACT NO. 74935				
	DATE -	REVISED -		ILLINOIS FED. AID PROJECT							

Adjacent Patch	County & Route	Patch Number	Lane	Mile Post	Length (FT)	Width (FT)	Plan Depth (INCHES)	Measured Depth (INCHES)	% Change Thickness	44201803 Class D Patches, Type II, 13" (SQ YD)	44201007 Class B Patches, Type II, 13" (SQ YD)	44201011 Class B Patches, Type III, 13" (SQ YD)	44201013 Class B Patches, Type IV, 13" (SQ YD)	44213204 Tie Bars 3/4" (EACH)	44200050 Welded Wire Reinforcement (SQ YD)	44213200 Saw Cuts (FT)	44201299 Dowel Bars 1 1/2" (EACH)
Y	Clay 45 S	87	NB	0.252	6.0	12.0	13.0	13.0	0.00%		8.0					48.0	20
Y	Clay 45 S	88	SB	0.252	6.0	12.0	13.0	13.0	0.00%		8.0					48.0	20
Y	Clay 45 S	89	NB	0.419	6.0	12.0	13.0	13.0	0.00%		8.0					48.0	20
Y	Clay 45 S	90	SB	0.419	6.0	12.0	13.0	13.0	0.00%		8.0					48.0	20
	Clay 45 S	91	SB	0.548	6.0	12.0	13.0	13.0	0.00%		8.0					48.0	20
Y	Clay 45 S	92	NB	0.570	15.0	12.0	13.0	13.0	0.00%			20.0			20.0	66.0	20
Y	Clay 45 S	93	SB	0.570	15.0	12.0	13.0	13.0	0.00%			20.0			20.0	66.0	20
Y	Clay 45 S	94	NB	0.604	6.0	12.0	13.0	13.0	0.00%		8.0					48.0	20
Y	Clay 45 S	95	SB	0.604	6.0	12.0	13.0	13.0	0.00%		8.0					48.0	20
Y	Clay 45 S	96	NB	0.698	6.0	12.0	13.0	13.0	0.00%		8.0					48.0	20
Y	Clay 45 S	97	SB	0.698	6.0	12.0	13.0	13.0	0.00%		8.0					48.0	20
Y	Clay 45 S	98	NB	0.847	6.0	12.0	13.0	13.0	0.00%		8.0					48.0	20
Y	Clay 45 S	99	SB	0.847	6.0	12.0	13.0	13.0	0.00%		8.0					48.0	20
Y	Clay 45 S	100	NB	1.216	6.0	12.0	13.0	13.0	0.00%		8.0					48.0	20
Y	Clay 45 S	101	SB	1.216	6.0	12.0	13.0	13.0	0.00%		8.0					48.0	20
Y	Clay 45 S	102	NB	1.288	6.0	12.0	13.0	13.0	0.00%		8.0					48.0	20
y	Clay 45 S	103	SB	1.288	6.0	12.0	13.0	13.0	0.00%		8.0					48.0	20
Y	Clay 45 S	104	NB	1.500	15.0	12.0	13.0	13.0	0.00%			20.0			20.0	66.0	20
Y	Clay 45 S	105	SB	1.500	15.0	12.0	13.0	13.0	0.00%			20.0			20.0	66.0	20
Y	Clay 45 S	106	NB	1.653	12.0	12.0	13.0	13.0	0.00%			16.0			16.0	60.0	20
Y	Clay 45 S	107	SB	1.653	12.0	12.0	13.0	13.0	0.00%			16.0			16.0	60.0	20
	Clay 45 S	108	SB	1.804	14.0	12.0	13.0	13.0	0.00%			18.7			18.7	64.0	20
Y	Clay 45 S	109	NB	1.992	6.0	12.0	13.0	13.0	0.00%		8.0					48.0	20
Y	Clay 45 S	110	SB	1.992	6.0	12.0	13.0	13.0	0.00%		8.0					48.0	20
Y	Clay 45 S	111	NB	2.113	6.0	12.0	13.0	13.0	0.00%		8.0					48.0	20
Y	Clay 45 S	112	SB	2.113	6.0	12.0	13.0	13.0	0.00%		8.0					48.0	20
	Clay 45 S	113	SB	2.315	6.0	12.0	13.0	13.0	0.00%		8.0					48.0	20
	Clay 45 S	114	NB	2.483	6.0	12.0	13.0	13.0	0.00%		8.0					48.0	20
	Clay 45 S	115	SB	2.556	15.0	12.0	13.0	13.0	0.00%			20.0			20.0	66.0	20
Y	Clay 45 S	116	NB	2.627	20.0	12.0	13.0	13.0	0.00%				26.7	9	26.7	76.0	20
Y	Clay 45 S	117	SB	2.627	20.0	12.0	13.0	13.0	0.00%				26.7	9	26.7	76.0	20

MODEL: Default
 FILE: Model - PatchingSchedule.dwg
 PROJECT: 74935\CADD\Drawings\DOT - Office\Drawings\74935-PatchingSchedule.dwg

* FAP 327, FAP 328A, FAP 328
 ** CLAY, RICHLAND, LAWRENCE

USER NAME = steffenmk	DESIGNED -	REVISED -	STATE OF ILLINOIS DEPARTMENT OF TRANSPORTATION	PATCHING SCHEDULE - CLAY COUNTY US 45				F.A.P. RTE.	SECTION	COUNTY	TOTAL SHEETS	SHEET NO.
PLOT SCALE = 100.0000' / in.	DRAWN -	REVISED -		SCALE:	SHEET	OF	SHEETS	STA.	TO STA.	**	13	11
PLOT DATE = 10/30/2019	CHECKED -	REVISED -		CONTRACT NO. 74935								
	DATE -	REVISED -		ILLINOIS FED. AID PROJECT								

Adjacent Patch	County & Route	Patch Number	Lane	Mile Post	Length (FT)	Width (FT)	Plan Depth (INCHES)	Measured Depth (INCHES)	% Change Thickness	44201803 Class D Patches, Type II, 13" (SQ YD)	44201007 Class B Patches, Type II, 13" (SQ YD)	44201011 Class B Patches, Type III, 13" (SQ YD)	44201013 Class B Patches, Type IV, 13" (SQ YD)	44213204 Tie Bars 3/4" (EACH)	44200050 Welded Wire Reinforcement (SQ YD)	44213200 Saw Cuts (FT)	44201299 Dowel Bars 1 1/2" (EACH)
Y	Clay 45 S	118	NB	2.805	15.0	12.0	13.0	13.0	0.00%			20.0			20.0	66.0	20
Y	Clay 45 S	119	SB	2.805	15.0	12.0	13.0	13.0	0.00%			20.0			20.0	66.0	20
	Clay 45 S	120	NB	3.232	6.0	12.0	13.0	13.0	0.00%		8.0					48.0	20
	Clay 45 S	121	NB	3.700	6.0	12.0	13.0	13.0	0.00%		8.0					48.0	20
Y	Clay 45 S	122	NB	4.182	6.0	12.0	13.0	13.0	0.00%		8.0					48.0	20
Y	Clay 45 S	123	SB	4.182	6.0	12.0	13.0	13.0	0.00%		8.0					48.0	20
Y	Clay 45 S	124	NB	4.236	6.0	12.0	13.0	13.0	0.00%		8.0					48.0	20
Y	Clay 45 S	125	SB	4.236	6.0	12.0	13.0	13.0	0.00%		8.0					48.0	20
Y	Clay 45 S	126	NB	4.519	22.0	12.0	13.0	13.0	0.00%				29.3	10	29.3	80.0	20
Y	Clay 45 S	127	SB	4.519	22.0	12.0	13.0	13.0	0.00%				29.3	10	29.3	80.0	20
	Clay 45 S	128	SB	4.606	8.0	12.0	13.0	13.0	0.00%		10.7					52.0	20
	Clay 45 S	129	SB	4.692	18.0	12.0	13.0	13.0	0.00%			24.0			24.0	72.0	20
Y	Clay 45 N	126	NB	9.992	15.0	12.0	13.0	13.0	0.00%			20.0			20.0	66.0	20
Y	Clay 45 N	127	SB	9.992	15.0	12.0	13.0	13.0	0.00%			20.0			20.0	66.0	20
	Clay 45 N	128	NB	10.298	10.0	12.0	13.0	13.0	0.00%		13.3					56.0	20
Y	Clay 45 N	129	NB	10.677	20.0	12.0	13.0	13.0	0.00%				26.7	9	26.7	76.0	20
Y	Clay 45 N	130	SB	10.677	20.0	12.0	13.0	13.0	0.00%				26.7	9	26.7	76.0	20
Y	Clay 45 N	131	NB	10.720	6.0	12.0	13.0	13.0	0.00%		8.0					48.0	20
Y	Clay 45 N	132	SB	10.837	6.0	12.0	13.0	13.0	0.00%		8.0					48.0	20
Y	Clay 45 N	133	SB	11.067	6.0	12.0	13.0	13.0	0.00%		8.0					48.0	20
Y	Clay 45 N	134	SB	12.189	6.0	12.0	13.0	13.0	0.00%		8.0					48.0	20
Y	Clay 45 N	135	NB	12.189	6.0	12.0	13.0	13.0	0.00%		8.0					48.0	20
Y	Clay 45 N	136	NB	12.452	6.0	12.0	13.0	13.0	0.00%		8.0					48.0	20
Y	Clay 45 N	137	SB	12.452	6.0	12.0	13.0	13.0	0.00%		8.0					48.0	20
Y	Clay 45 N	138	NB	12.752	6.0	12.0	13.0	13.0	0.00%		8.0					48.0	20
Y	Clay 45 N	139	SB	12.752	6.0	12.0	13.0	13.0	0.00%		8.0					48.0	20
Y	Clay 45 N	140	NB	13.281	12.0	12.0	13.0	13.0	0.00%			16.0			16.0	60.0	20
Y	Clay 45 N	141	SB	13.281	12.0	12.0	13.0	13.0	0.00%			16.0			16.0	60.0	20
Y	Clay 45 N	142	NB	19.629	22.0	12.0	13.0	13.0	0.00%				29.3	10	29.3	80.0	20
Y	Clay 45 N	143	SB	19.629	22.0	12.0	13.0	13.0	0.00%				29.3	10	29.3	80.0	20
Y	Clay 45 N	144	NB	19.855	20.0	12.0	13.0	13.0	0.00%				26.7	9	26.7	76.0	20
Y	Clay 45 N	145	SB	19.855	20.0	12.0	13.0	13.0	0.00%				26.7	9	26.7	76.0	20
Y	Clay 45 N	146	NB	20.527	40.0	12.0	13.0	13.0	0.00%				53.3	19	53.3	116.0	20
Y	Clay 45 N	147	SB	20.527	40.0	12.0	13.0	13.0	0.00%				53.3	19	53.3	116.0	20
Totals										0.0	312.0	286.7	384.0	132.0	670.7	3814.0	1300

* FAP 327, FAP 328A, FAP 328
** CLAY, RICHLAND, LAWRENCE

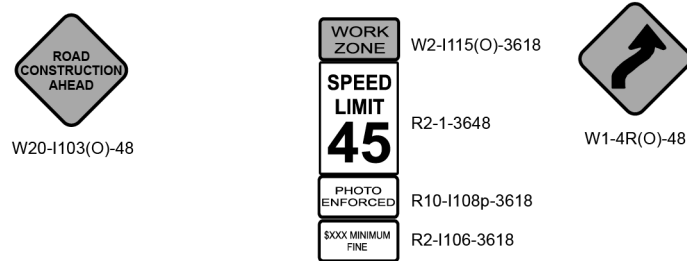
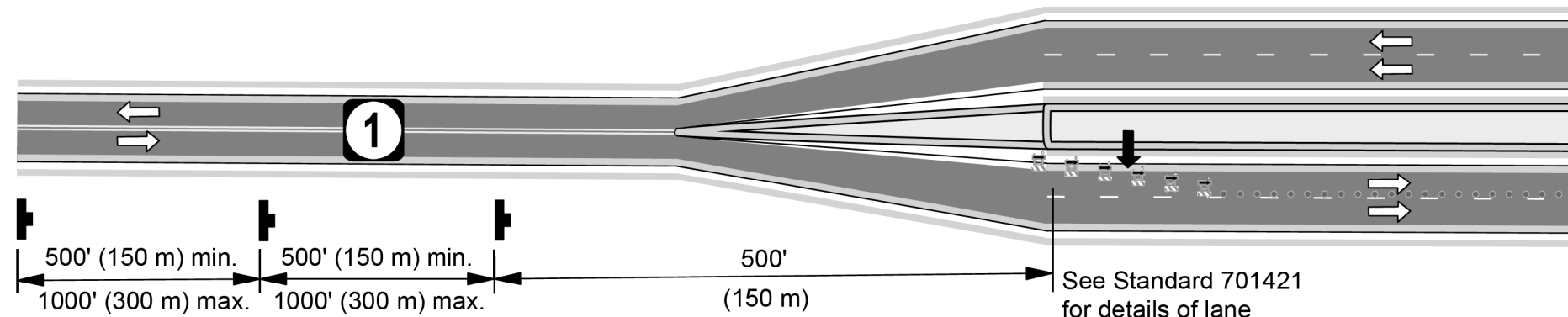
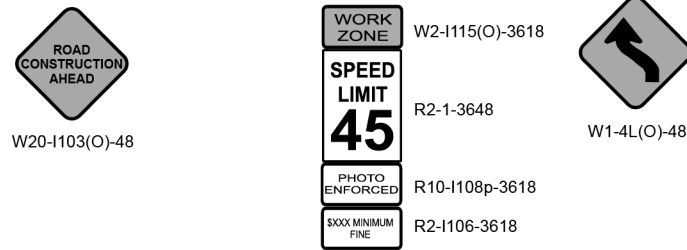
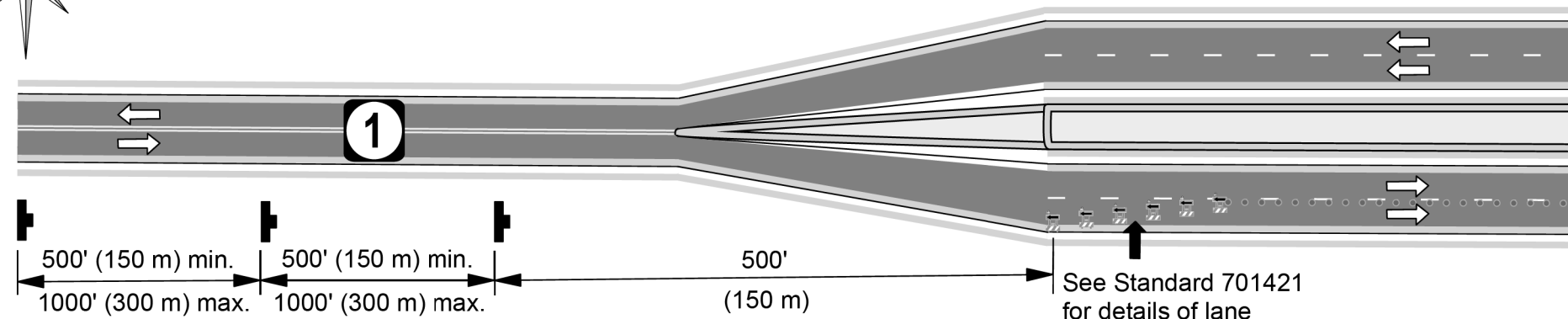
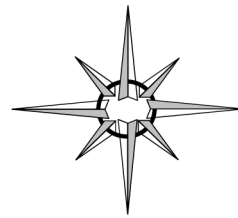
MODEL: Default
FILE: \\hpc\p\pub\baronon.d\at\illinois.gov\p\WID\DOT\Documents\DOT_Offices\DOT\74935\CADData\CAD\Drawings\DOT_74935-sch-schedule.dgn

USER NAME = steffenmk	DESIGNED -	REVISED -
	DRAWN -	REVISED -
PLOT SCALE = 100.0000' / in.	CHECKED -	REVISED -
PLOT DATE = 10/30/2019	DATE -	REVISED -

**STATE OF ILLINOIS
DEPARTMENT OF TRANSPORTATION**

PATCHING SCHEDULE - CLAY COUNTY US 45			
SCALE:	SHEET	OF	SHEETS
	STA.	TO	STA.

F.A.P. RTE.	SECTION	COUNTY	TOTAL SHEETS	SHEET NO.
*	D7 PATCHING 2020-7	**	13	12
			CONTRACT NO. 74935	
ILLINOIS		FED. AID PROJECT		



MODEL: Default
 FILE: \\invarion.com\data\illinois\pww\DOT\Documents\DOT_Offices\Illinet\7\Projects\74935\CADD\data\CADD\sheet\074935-sht-detslls.dgn

* FAP 327, FAP 328A, FAP 328
 ** CLAY, RICHLAND, LAWRENCE

USER NAME = steffenmk	DESIGNED -	REVISED -
	DRAWN -	REVISED -
PLOT SCALE = 100,0000' / in.	CHECKED -	REVISED -
PLOT DATE = 10/30/2019	DATE -	REVISED -

**STATE OF ILLINOIS
 DEPARTMENT OF TRANSPORTATION**

701421 SPECIAL 2L TO 4L LANE CLOSURE			
SCALE:	SHEET	OF SHEETS	STA. TO STA.

F.A.P. RTE.	SECTION	COUNTY	TOTAL SHEETS	SHEET NO.
*	D7 PATCHING 2020-7	**	13	13
CONTRACT NO. 74935				
ILLINOIS		FED. AID PROJECT		