

F.A.P. RTE.	SECTION	COUNTY	TOTAL SHEETS	SHEET NO.
338	112 & 113 WRS-5	DUPAGE	963	1
FED. ROAD DIST. NO.	ILLINOIS CONTRACT NO. 60131			

D-91-014-10 \*963 423-986

STATE OF ILLINOIS  
DEPARTMENT OF TRANSPORTATION  
DIVISION OF HIGHWAYS

PROPOSED HIGHWAY PLANS

FAP ROUTE 338: IL ROUTE 59  
DIEHL ROAD TO FERRY ROAD  
SECTION (112 & 113) WRS-5

THE PROJECT IS LOCATED IN THE CITY OF NAPERVILLE.

FOR INDEX OF SHEETS, SEE SHEET NOS. 2 & 3

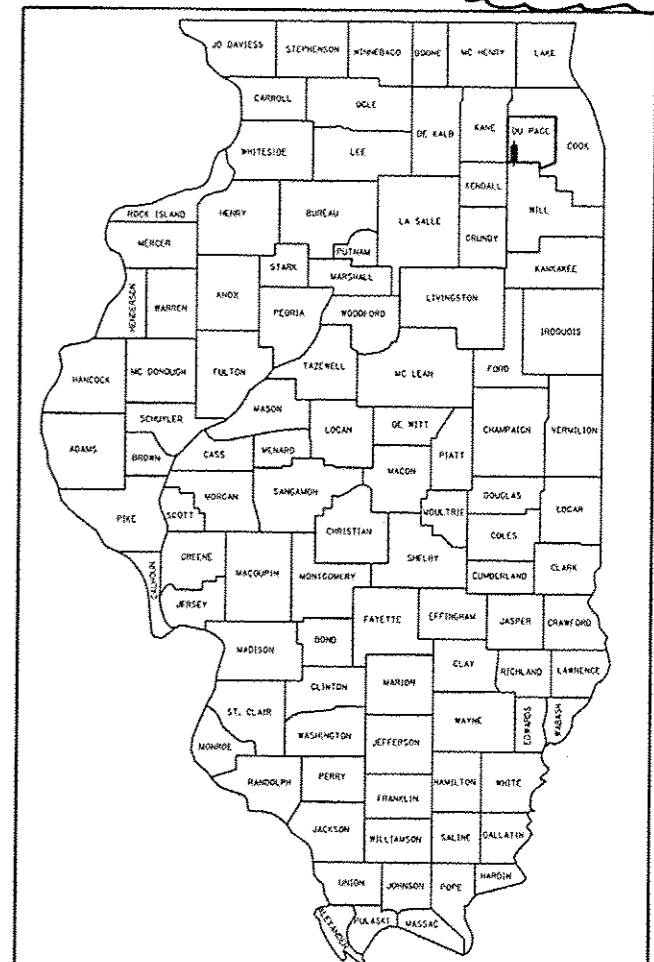
DESIGN DESIGNATION

5580(30) OTHER PRINCIPAL ARTERIAL 25.79 (PCC-30)

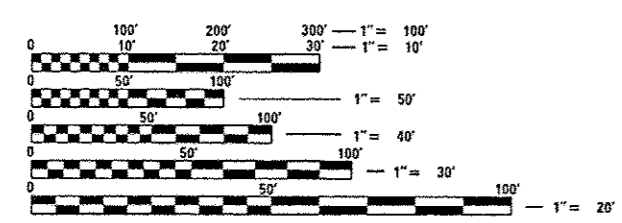
TRAFFIC DATA

	ADT 2009/2030	SPEED DESIGN/POSTED
IL ROUTE 59		
DIEHL TO I-88 INTERCHANGE	47,200/67,000	45/40
I-88 INTERCHANGE	46,600/58,000	30/30
I-88 INTERCHANGE TO FERRY	30,400/51,000	45/40
EB I-88 RAMP (WEST)	5,100/8,000	50/45
EB I-88 RAMP (EAST)	20,200/25,000	50/45
WB I-88 RAMP (WEST)	6,400/8,000	50/45
WB I-88 RAMP (EAST)	20,900/25,000	50/45

ROADWAY & INTERCHANGE  
RECONSTRUCTION  
DUPAGE COUNTY  
C-91-014-10

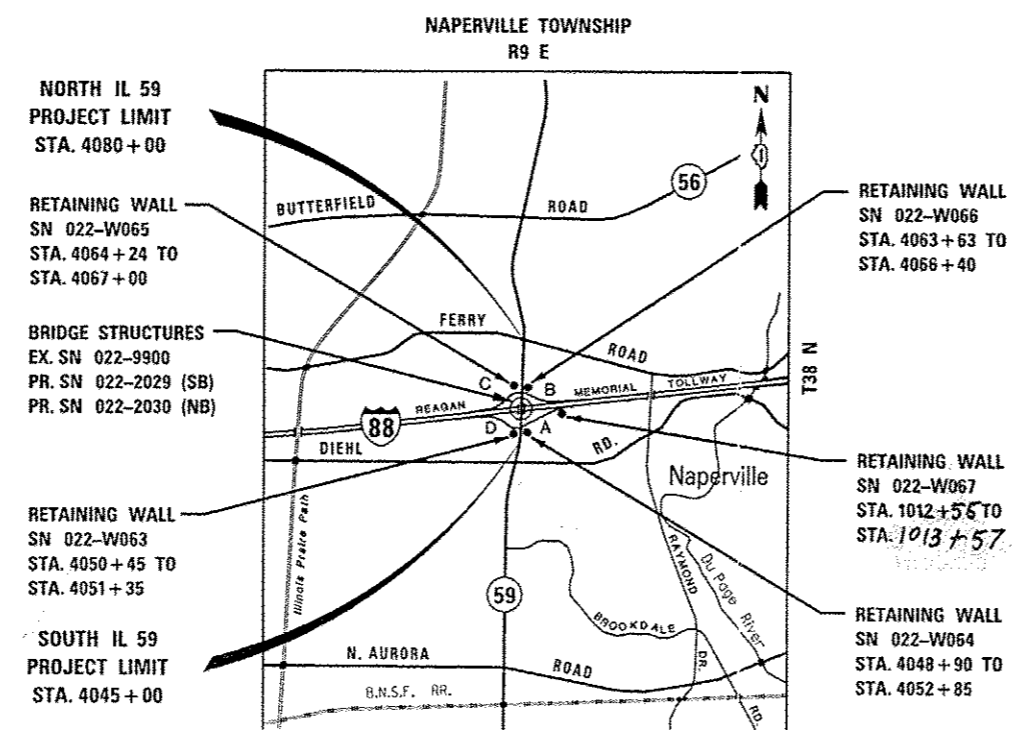


LOCATION OF SECTION INDICATED THUS: [shaded box]



FULL SIZE PLANS HAVE BEEN PREPARED USING STANDARD ENGINEERING SCALES. REDUCED SIZED PLANS WILL NOT CONFORM TO STANDARD SCALES. IN MAKING MEASUREMENTS ON REDUCED PLANS, THE ABOVE SCALES MAY BE USED.

J.U.L.I.E.  
JOINT UTILITY LOCATION INFORMATION FOR EXCAVATION  
1-800-892-0123  
OR 811



LOCATION MAP

NET LENGTH OF ILLINOIS ROUTE 59 PROJECT = 3,500 FEET = 0.66 MILES  
NET LENGTH OF RAMP IMPROVEMENT = 5,330 FEET = 1.01 MILES

PROJECT MANAGER - BRIAN KUTTAB  
(847)705-4431

CONTRACT NO. 60131

	KNIGHT E/A, INC. Date: 10-8-12 <i>John C. Murillo</i> John C. Murillo Expires: 11-30-13 Sheet No.: 1-456, 466-584, 689-963
	KNIGHT E/A, INC. Date: 10/8/12 <i>William P. Murphy</i> William P. Murphy Expires: 11-30-12 Sheet No.: 585-647, 652-661, 684-688
	ZROKA ENGINEERING, P.C. Date: 10/8/12 <i>Deborah A. Zroka</i> Deborah A. Zroka Expires: 11-30-14 Sheet No.: 648-651, 662-683
	REGINA WEBSTER & ASSOC., INC. Date: 10-8-12 <i>Daniel Wiktorzak</i> Daniel Wiktorzak Expires: 11-30-13 Sheet No.: 457-465

STATE OF ILLINOIS  
DEPARTMENT OF TRANSPORTATION  
DIVISION OF HIGHWAYS

SUBMITTED October 10, 2012

*John F. Farnsworth*  
DEPUTY DIRECTOR OF HIGHWAYS, REGION ENGINEER

Dec 7 2012  
*John D. Baranelli P.E.*  
acting ENGINEER OF DESIGN AND ENVIRONMENT

Dec 7 2012  
*William R. Frey*  
acting DIRECTOR OF HIGHWAYS, CHIEF ENGINEER

PRINTED BY THE AUTHORITY  
OF THE STATE OF ILLINOIS

Plans Prepared By:  
**KNIGHT**  
Engineers & Architects

221 North LaSalle Street  
Suite 300  
Chicago, IL 60601-1211  
Phone: (312) 577-3300

Rev. 1-3-13