

**MOT PAVEMENT MARKING LEGEND**

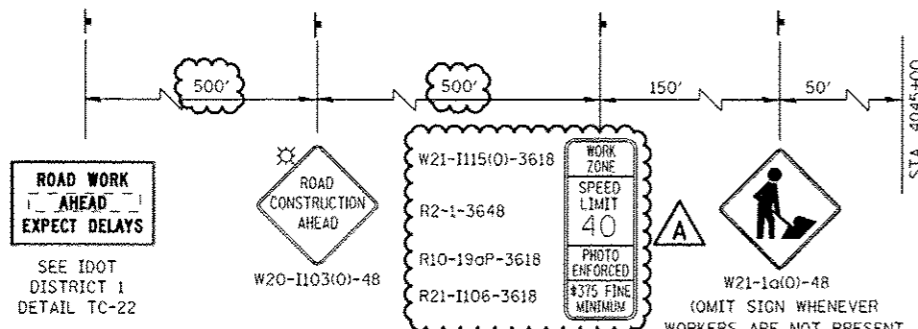
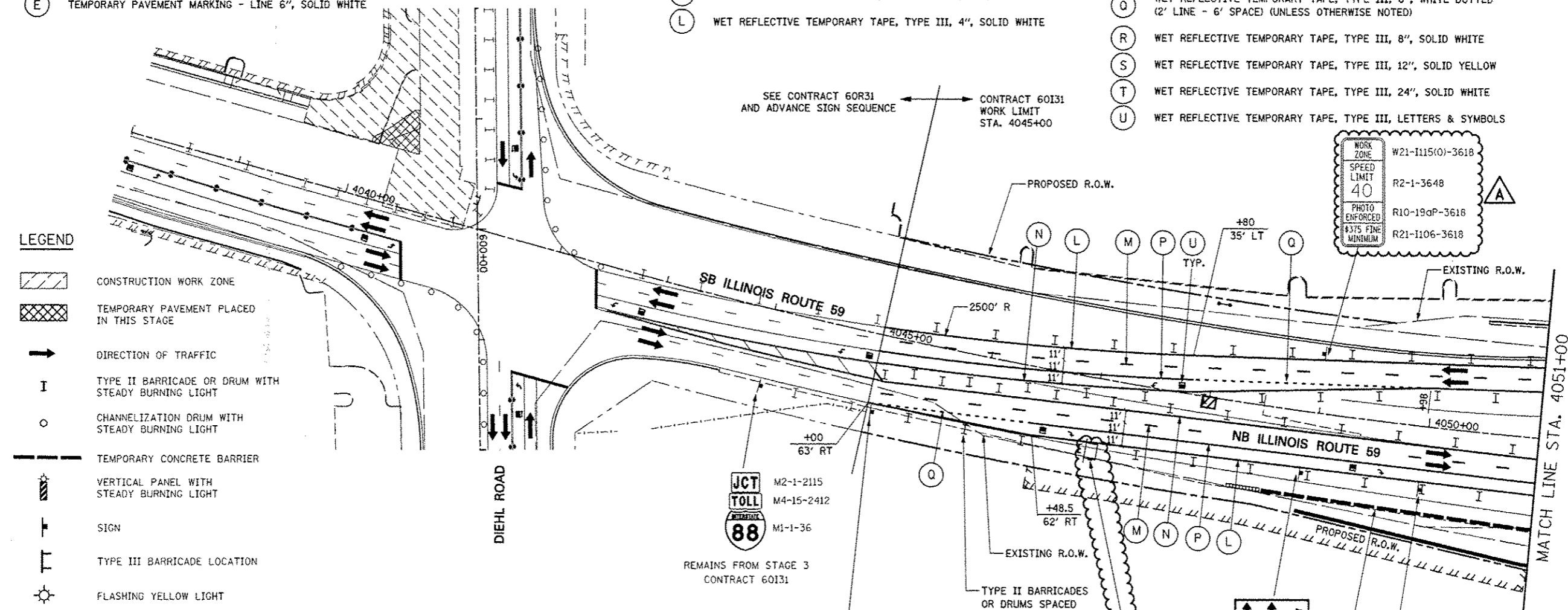
- (A) TEMPORARY PAVEMENT MARKING - LINE 4", SOLID WHITE
- (B) TEMPORARY PAVEMENT MARKING - LINE 4", WHITE SKIP-DASH (10' LINE - 30' SPACE)
- (C) TEMPORARY PAVEMENT MARKING - LINE 4", SOLID YELLOW
- (D) TEMPORARY PAVEMENT MARKING - LINE 4", DOUBLE YELLOW SPACED AT 11" C-C WITH TEMPORARY RAISED REFLECTIVE PAVEMENT MARKERS SPACED 40' C-C (BI-DIRECTIONAL AMBER)
- (E) TEMPORARY PAVEMENT MARKING - LINE 6", SOLID WHITE

- (F) TEMPORARY PAVEMENT MARKING - LINE 6", WHITE DOTTED (2' LINE - 6' SPACE) (UNLESS OTHERWISE NOTED)
- (G) TEMPORARY PAVEMENT MARKING - LINE 8", SOLID WHITE
- (H) TEMPORARY PAVEMENT MARKING - LINE 12", SOLID WHITE
- (I) TEMPORARY PAVEMENT MARKING - LINE 12", SOLID YELLOW
- (J) TEMPORARY PAVEMENT MARKING - LINE 24", SOLID WHITE
- (K) TEMPORARY PAVEMENT MARKING, LETTERS & SYMBOLS
- (L) WET REFLECTIVE TEMPORARY TAPE, TYPE III, 4", SOLID WHITE

- (M) WET REFLECTIVE TEMPORARY TAPE, TYPE III, 4", WHITE SKIP-DASH (10' LINE - 30' SPACE)
- (N) WET REFLECTIVE TEMPORARY TAPE, TYPE III, 4", SOLID YELLOW
- (O) WET REFLECTIVE TEMPORARY TAPE, TYPE III, 4", DOUBLE YELLOW SPACED AT 11" C-C WITH TEMPORARY RAISED REFLECTIVE PAVEMENT MARKERS SPACED 40' C-C (BI-DIRECTIONAL AMBER)
- (P) WET REFLECTIVE TEMPORARY TAPE, TYPE III, 6", SOLID WHITE
- (Q) WET REFLECTIVE TEMPORARY TAPE, TYPE III, 6", WHITE DOTTED (2' LINE - 6' SPACE) (UNLESS OTHERWISE NOTED)
- (R) WET REFLECTIVE TEMPORARY TAPE, TYPE III, 8", SOLID WHITE
- (S) WET REFLECTIVE TEMPORARY TAPE, TYPE III, 12", SOLID YELLOW
- (T) WET REFLECTIVE TEMPORARY TAPE, TYPE III, 24", SOLID WHITE
- (U) WET REFLECTIVE TEMPORARY TAPE, TYPE III, LETTERS & SYMBOLS

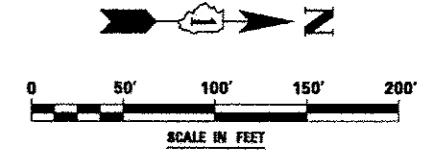
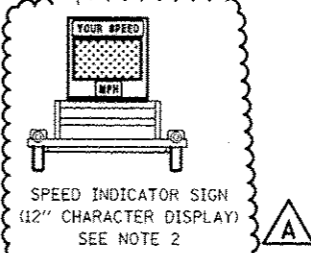
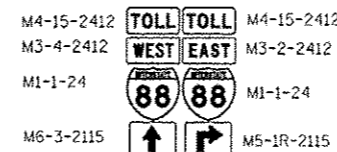
**LEGEND**

- CONSTRUCTION WORK ZONE
- TEMPORARY PAVEMENT PLACED IN THIS STAGE
- DIRECTION OF TRAFFIC
- TYPE II BARRICADE OR DRUM WITH STEADY BURNING LIGHT
- CHANNELIZATION DRUM WITH STEADY BURNING LIGHT
- TEMPORARY CONCRETE BARRIER
- VERTICAL PANEL WITH STEADY BURNING LIGHT
- SIGN
- TYPE III BARRICADE LOCATION
- FLASHING YELLOW LIGHT



**NOTES**

- ADVANCE SIGN LOCATIONS SHALL BE COORDINATED WITH ADJACENT CONTRACT. "ROAD CONSTRUCTION AHEAD" SIGN SHALL BE PLACED WHEN WARRANTED BY WORK ZONE CONDITIONS OR AS DIRECTED BY THE ENGINEER.
- LOCATION OF TRAILER MOUNTED SPEED INDICATOR SIGN SHALL BE COORDINATED WITH THE ENGINEER AND WILL BE MEASURED AND PAID FOR SEPARATELY UNDER SPEED INDICATOR SIGN.



FILE NAME:	USER NAME: *USER*	DESIGNED: PJO	REVISED: -ADDENDUM A 12/17/2012	<b>STATE OF ILLINOIS DEPARTMENT OF TRANSPORTATION</b>	<b>MAINTENANCE OF TRAFFIC - STAGE 3B ILLINOIS ROUTE 59</b>	F.A.P. RTE:	SECTION:	COUNTY:	TOTAL SHEETS:	SHEET NO.:	
*FILE#*		DRAWN: KES	REVISED: -			338	(112 & 113) WRS-5	DUPAGE	963	192	
PLOT SCALE: *SCALE*		CHECKED: JCM	REVISED: -			CONTRACT NO. 60I31					
PLOT DATE: *DATE*		DATE: 10/15/2012	REVISED: -			SCALE: SHEET NO. 76 OF 118 SHEETS STA. 4038+00 TO STA. 4051+00		ILLINOIS FED. AID PROJECT			