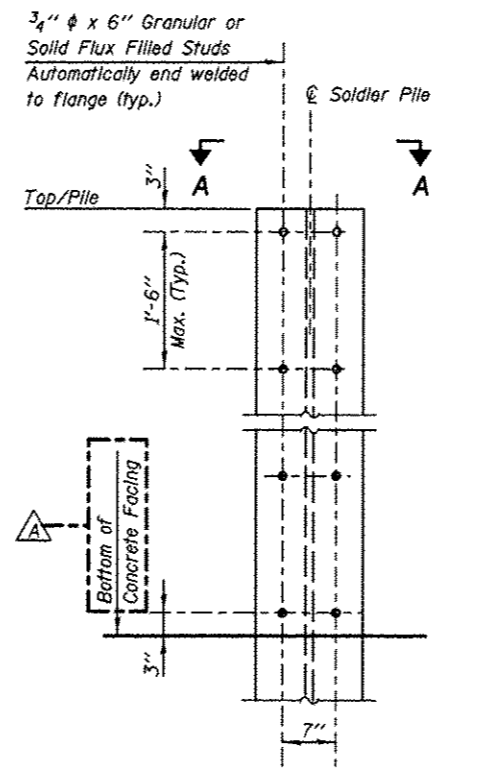
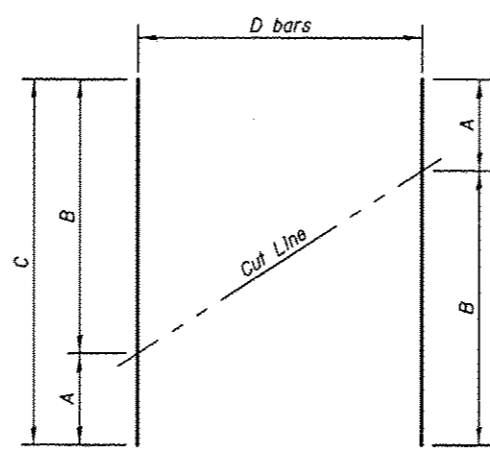


TYPICAL WALL SECTION

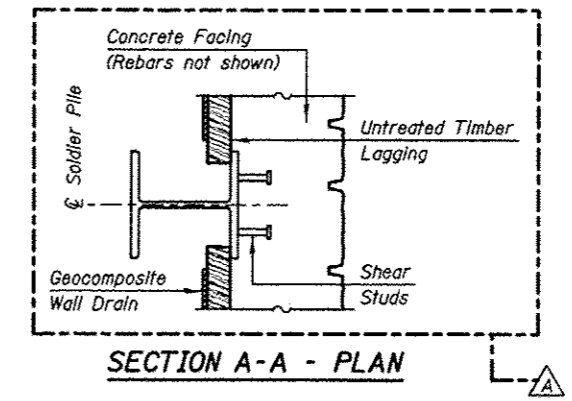
LEGEND:
E.F. Each Face



STUD SHEAR CONNECTORS LAYOUT



BAR CUTTING DIAGRAM
Order bars full length. Cut as shown and use remainder of bars in opposite face.



BAR	A	B	C	D
v200(E)	3'-10"	4'-4"	8'-2"	27
v201(E)	4'-4"	4'-10"	9'-2"	27
v202(E)	4'-10"	5'-4"	10'-2"	27
v204(E)	5'-9"	6'-3"	12'-0"	27
v207(E)	6'-3"	7'-9"	14'-0"	27
v208(E)	7'-9"	9'-3"	17'-0"	27
v209(E)	9'-3"	10'-9"	20'-0"	27
v210(E)	10'-9"	12'-3"	23'-0"	27
v211(E)	12'-3"	13'-9"	26'-0"	27
v212(E)	13'-9"	11'-3"	25'-0"	23
v213(E)	11'-3"	8'-9"	20'-0"	23
v214(E)	8'-9"	6'-0"	14'-9"	25
v215(E)	6'-0"	3'-3"	9'-3"	25

BILL OF MATERIAL

BAR	NO.	SIZE	LENGTH	SHAPE
h200(E)	166	#5	6'-0"	=====
h201(E)	78	#5	26'-2"	=====
h202(E)	30	#5	26'-0"	=====
h203(E)	118	#5	25'-5"	=====
h204(E)	54	#5	21'-11"	=====
h205(E)	34	#5	23'-11"	=====
v200(E)	27	#4	8'-2"	=====
v201(E)	27	#4	9'-2"	=====
v202(E)	27	#4	10'-2"	=====
v203(E)	54	#4	5'-4"	=====
v204(E)	27	#4	12'-0"	=====
v205(E)	108	#4	6'-3"	=====
v206(E)	54	#4	6'-5"	=====
v207(E)	27	#4	14'-0"	=====
v208(E)	27	#4	17'-0"	=====
v209(E)	27	#4	20'-0"	=====
v210(E)	27	#4	23'-0"	=====
v211(E)	27	#4	26'-0"	=====
v212(E)	23	#4	25'-0"	=====
v213(E)	23	#4	20'-0"	=====
v214(E)	25	#4	14'-9"	=====
v215(E)	25	#4	9'-3"	=====
Structure Excavation			Cu. Yd.	115.0
Concrete Structures			Cu. Yd.	150.0
Form Liner Textured Surface			Sq. Ft.	1555.0
Stud Shear Connectors			Each	650
Reinforcement Bars, Epoxy Coated			Pound	13680
Drilling and Setting Solder Piles (In Soil)			Cu. Ft.	7620.0
Furnishing Solder Piles (HP14x73)			Foot	546.0
Furnishing Solder Piles (W24x68)			Foot	130.0
Furnishing Solder Piles (W24x117)			Foot	874.0

KNIGHT
Engineers & Architects

DESIGNED	TB
CHECKED	WPM
SCALE	NONE
DATE	10/15/2012

REVISION	12/17/2012	WPM
REVISION		
REVISION		
REVISION		

STATE OF ILLINOIS
DEPARTMENT OF TRANSPORTATION

WALL SECTIONS AND DETAILS
STRUCTURE NUMBER 022-W064
SHEET NO. SC-06 OF 10 SHEETS

F.A.P. RTE.	SECTION	COUNTY	TOTAL SHEETS	SHEET NO.
338	(112 & 113) WRS-5	DUPAGE	963	657
CONTRACT NO. 60131			ILLINOIS FED. AID PROJECT	