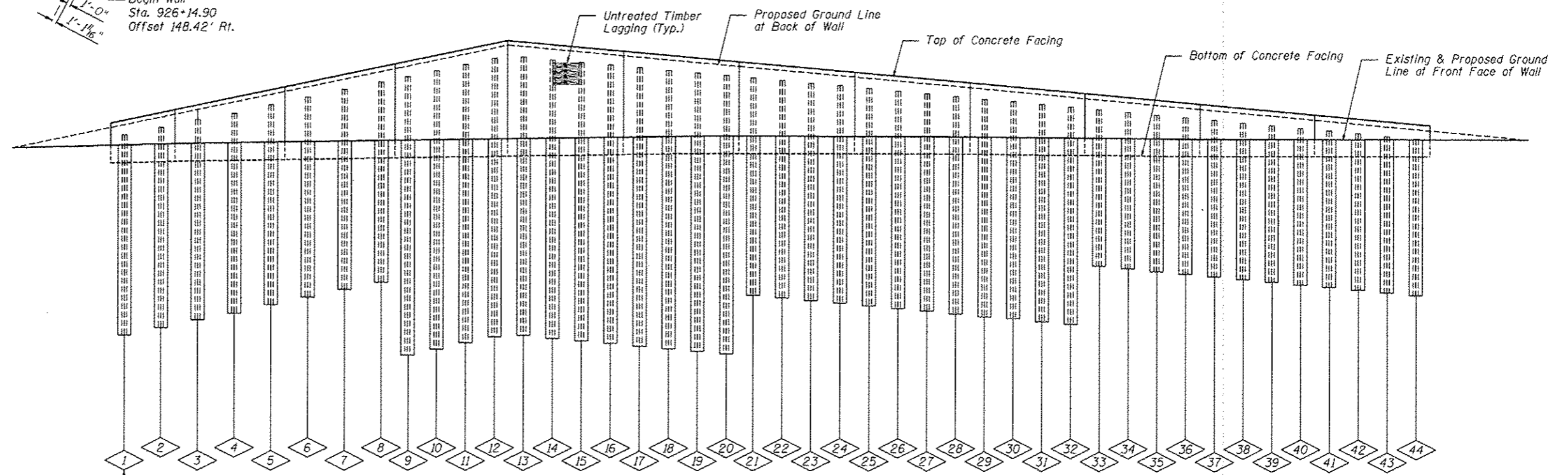


PLAN



DEVELOPED ELEVATION

PILE SUMMARY						PILE SUMMARY						PILE SUMMARY							
Pile No.	Station	Offset to C/Pile	Pile Designation	Length	Bottom Elevation	Pile No.	Station	Offset to C/Pile	Pile Designation	Length	Bottom Elevation	Pile No.	Station	Offset to C/Pile	Pile Designation	Length	Bottom Elevation	Top Elevation	
1	926+13.96	144.89	W27x146	23'-0"	688.33	711.33	16	926+77.47	78.07	W27x146	32'-0"	687.78	31	927+69.14	79.75	W27x146	25'-0"	690.34	715.34
2	926+15.33	136.78	W27x146	23'-0"	689.54	712.54	17	926+82.80	77.74	W27x146	32'-0"	687.48	32	927+75.91	79.91	W27x146	25'-0"	690.04	715.04
3	926+18.77	129.00	W27x146	23'-0"	690.42	713.42	18	926+88.14	77.51	W27x146	32'-0"	687.18	33	927+82.55	80.06	W27x146	18'-0"	696.75	714.75
4	926+22.95	122.96	W27x146	23'-0"	691.30	714.30	19	926+93.48	77.38	W27x146	32'-0"	686.88	34	927+89.32	80.19	W27x146	18'-0"	696.45	714.45
5	926+27.23	117.01	W27x146	23'-0"	692.18	715.18	20	926+98.82	77.36	W27x146	32'-0"	686.59	35	927+96.10	80.30	W27x146	18'-0"	696.15	714.15
6	926+31.63	111.12	W27x146	23'-0"	693.05	716.05	21	927+03.78	77.44	W27x146	25'-0"	693.31	36	928+02.87	80.40	W27x146	18'-0"	695.86	713.86
7	926+36.15	105.32	W27x146	23'-0"	693.93	716.93	22	927+09.12	77.62	W27x146	25'-0"	693.01	37	928+09.64	80.49	W27x146	18'-0"	695.56	713.56
8	926+40.79	99.60	W27x146	23'-0"	694.81	717.81	23	927+15.01	77.90	W27x146	25'-0"	692.72	38	928+16.42	80.55	W27x146	18'-0"	695.26	713.26
9	926+44.20	95.54	W27x146	32'-0"	686.44	718.44	24	927+21.77	78.19	W27x146	25'-0"	692.42	39	928+23.19	80.61	W27x146	18'-0"	694.97	712.97
10	926+48.02	91.13	W27x146	32'-0"	687.14	719.14	25	927+28.53	78.46	W27x146	25'-0"	692.12	40	928+29.97	80.64	W27x146	18'-0"	694.67	712.67
11	926+51.93	86.78	W27x146	32'-0"	687.83	719.83	26	927+35.30	78.71	W27x146	25'-0"	691.82	41	928+36.74	80.66	W27x146	18'-0"	694.37	712.37
12	926+55.91	82.49	W27x146	32'-0"	688.53	720.53	27	927+42.07	78.95	W27x146	25'-0"	691.53	42	928+43.52	80.67	W27x146	18'-0"	694.07	712.07
13	926+61.54	79.71	W27x146	32'-0"	688.67	720.67	28	927+48.83	79.18	W27x146	25'-0"	691.23	43	928+50.29	80.66	W27x146	18'-0"	693.78	711.78
14	926+66.84	79.06	W27x146	32'-0"	688.37	720.37	29	927+55.60	79.38	W27x146	25'-0"	690.93	44	928+57.07	80.63	W27x146	18'-0"	693.48	711.48
15	926+72.14	78.52	W27x146	32'-0"	688.07	720.07	30	927+62.37	79.58	W27x146	25'-0"	690.64							

BILL OF MATERIAL		
Item	Unit	Quantity
Furnishing Soldier Piles (W Section)	Foot	1,084
Drilling and Setting Soldier Piles (In Soil)	Cu Ft	6,119
Untreated Timber Lagging	Sq Ft	1,828
Stud Shear Connectors	Each	345

Note: All offsets are to the right of NB IL Rte 59

FILE NAME: \\SBS11-wb05-9227-Plat.dwg

ZROKA engineering
Zroka Engineering, P.C.
4216 North Hermitage
Chicago, IL 60613

USER NAME = SAW	DESIGNED - LAS	REVISION 12/17/2012 L.A.S.
PLOT SCALE = 26.667' / IN.	CHECKED - DAZ	REVISION
PLOT DATE = 12/12/2012	DRAWN - SAW	REVISION
	CHECKED - JLA	REVISION

STATE OF ILLINOIS
DEPARTMENT OF TRANSPORTATION

SOLDIER PILE LAYOUT
STRUCTURE NUMBER 022-W066
SHEET NO. SE-3 OF SE-11 SHEETS

F.A.P. RTE.	SECTION	COUNTY	TOTAL SHEETS	SHEET NO.
338/IL 59	(112 & 113) WRS-5	DUPAGE	963	675
CONTRACT NO. 60131			ILLINOIS FED. AID PROJECT	