

SUMMARY OF QUANTITIES			CONSTRUCTION TYPE CODE					SUMMARY OF QUANTITIES			CONSTRUCTION TYPE CODE							
CODE NO	ITEM	UNIT	TOTAL QUANTITIES	85% FED. 15% STATE 0005					CODE NO	ITEM	UNIT	TOTAL QUANTITIES	85% FED. 15% STATE 0005					
21101615	TOPSOIL FURNISH AND PLACE, 4"	SO YD	36	36					44201757	CLASS D PATCHES, TYPE III, 9 INCH	SO YD	15	15					
25200110	SOODING, SALT TOLERANT	SO YD	36	36					48102100	AGGREGATE WEDGE SHOULDER, TYPE B	TON	515	515					
40600200	BITUMINOUS MATERIALS (PRIME COAT)	TON	26	26					56109210	WATER VALVES TO BE ADJUSTED	EACH	4	4					
40600300	AGGREGATE (PRIME COAT)	TON	130	130					63500310	REMOVE AND REINSTALL DELINEATORS	EACH	28	28					
40600400	MIXTURE FOR CRACKS, JOINTS, AND FLANGEWAYS	TON	49	49					67000400	ENGINEER'S FIELD OFFICE, TYPE A	CAL MO	4	4					
40600982	HOT-MIX ASPHALT SURFACE REMOVAL - BUTT JOINT	SO YD	310	310					67100100	MOBILIZATION	L SUM	1	1					
40601005	HOT-MIX ASPHALT REPLACEMENT OVER PATCHES	TON	35	35					70102620	TRAFFIC CONTROL AND PROTECTION, STANDARD 701501	L SUM	1	1					
40603148	POLYMERIZED HOT-MIX ASPHALT BINDER COURSE, STONE MATRIX ASPHALT, N80	TON	3677	3677					70102635	TRAFFIC CONTROL AND PROTECTION, STANDARD 701701	L SUM	1	1					
40603153	POLYMERIZED HOT-MIX ASPHALT SURFACE COURSE, STONE MATRIX ASPHALT, N80	TON	3634	3634					70300100	SHORT TERM PAVEMENT MARKING	FOOT	2480	2480					
42001500	PROTECTIVE COAT	SO YD	42	42					70300210	TEMPORARY PAVEMENT MARKING LETTERS AND SYMBOLS	SO FT	76.6	76.6					
44000165	HOT-MIX ASPHALT SURFACE REMOVAL, 4"	SO YD	32439	32439					70300220	TEMPORARY PAVEMENT MARKING - LINE 4"	FOOT	27520	27520					
44002216	HOT-MIX ASPHALT REMOVAL OVER PATCHES, 4"	SO YD	150	150					70300240	TEMPORARY PAVEMENT MARKING - LINE 6"	FOOT	160	160					
44201753	CLASS D PATCHES, TYPE II, 9 INCH	SO YD	110	110					70300260	TEMPORARY PAVEMENT MARKING - LINE 12"	FOOT	410	410					

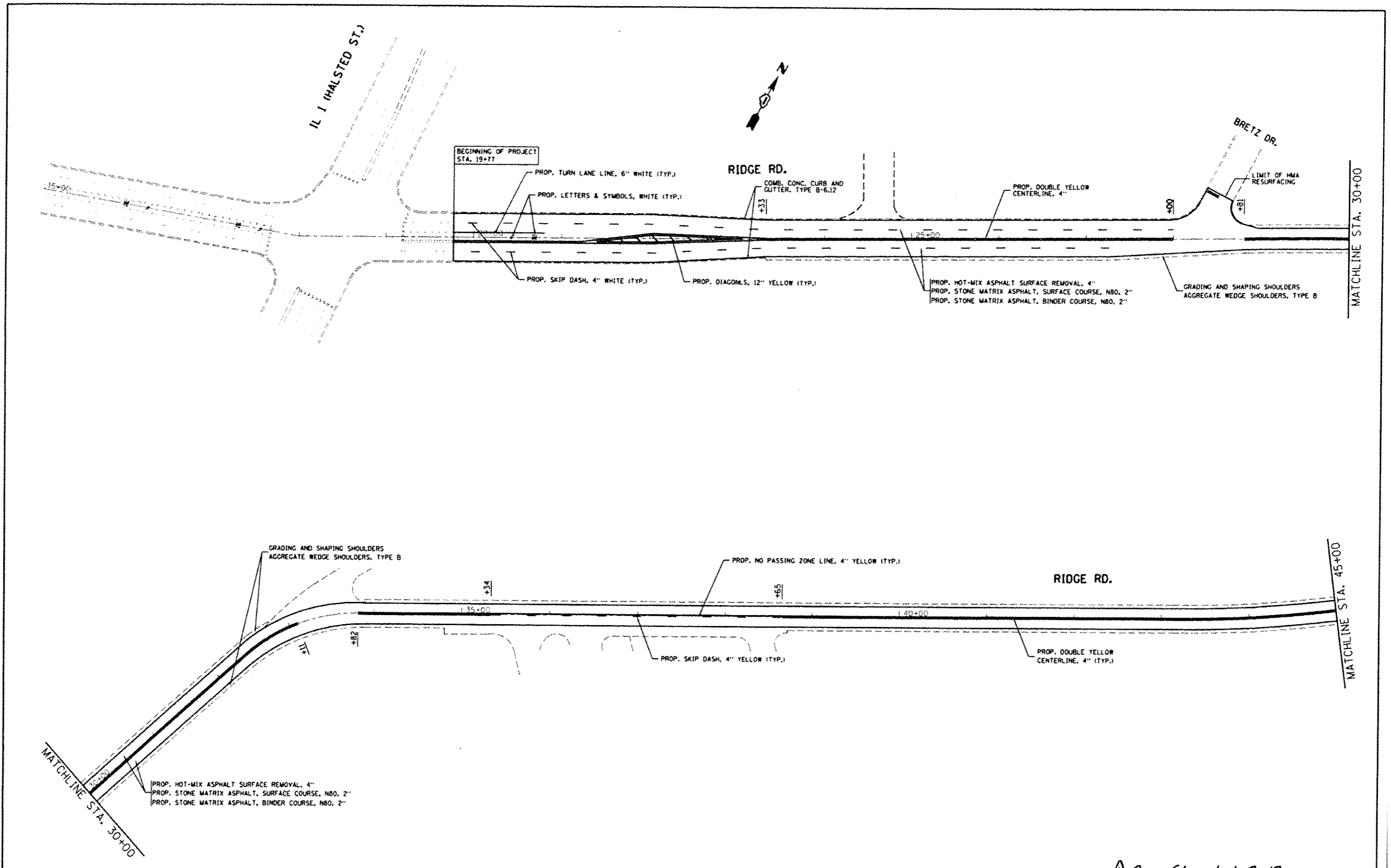
Rev. 1-3-13

* SPECIALTY ITEMS
 NON-PARTICIPATING ITEMS

SUMMARY OF QUANTITIES				CONSTRUCTION TYPE CODE					SUMMARY OF QUANTITIES				CONSTRUCTION TYPE CODE						
CODE NO	ITEM	UNIT	TOTAL QUANTITIES							CODE NO	ITEM	UNIT	TOTAL QUANTITIES						
				0005										0005					
70300270	TEMPORARY PAVEMENT MARKING	FOOT	270	270						#88600600	DETECTOR LOOP REPLACEMENT	FOOT	764	764					
	- LINE 16"																		
70300280	TEMPORARY PAVEMENT MARKING	FOOT	380	380						X2020110	GRADING AND SHAPING SHOULDERS	UNIT	130	130					
	- LINE 24"																		
70501000	WORK ZONE PAVEMENT MARKING REMOVAL	50 FT	850	850						X4063500	PRELIMINARY TEST STRIP	EACH	2	2					
#78000100	THERMOPLASTIC PAVEMENT MARKING	50 FT	76.6	76.6						X6030310	FRAMES AND LIDS TO BE ADJUSTED	EACH	12	12					
	- LETTERS AND SYMBOLS									(SPECIAL)									
#78000200	THERMOPLASTIC PAVEMENT MARKING	FOOT	27520	27520						Z0004562	COMBINATION CONCRETE CURB AND GUTTER	FOOT	215	215					
	- LINE 4"									REMOVAL AND REPLACEMENT									
#78000400	THERMOPLASTIC PAVEMENT MARKING	FOOT	160	160						Z0018500	DRAINAGE STRUCTURES TO BE CLEANED	EACH	5	5					
	- LINE 6"																		
#78000600	THERMOPLASTIC PAVEMENT MARKING	FOOT	410	410						Z0030850	TEMPORARY INFORMATION SIGNING	50 FT	102.8	102.8					
	- LINE 12"																		
#78000610	THERMOPLASTIC PAVEMENT MARKING	FOOT	270	270						Z0048665	RAILROAD PROTECTIVE LIABILITY INSURANCE	L SUM	1	1					
	- LINE 16"																		
#78000650	THERMOPLASTIC PAVEMENT MARKING	FOOT	380	380															
	- LINE 24"																		
#78100100	RAISED REFLECTIVE PAVEMENT MARKER	EACH	420	420															
78300200	RAISED REFLECTIVE PAVEMENT MARKER	EACH	380	380															
	REMOVAL																		

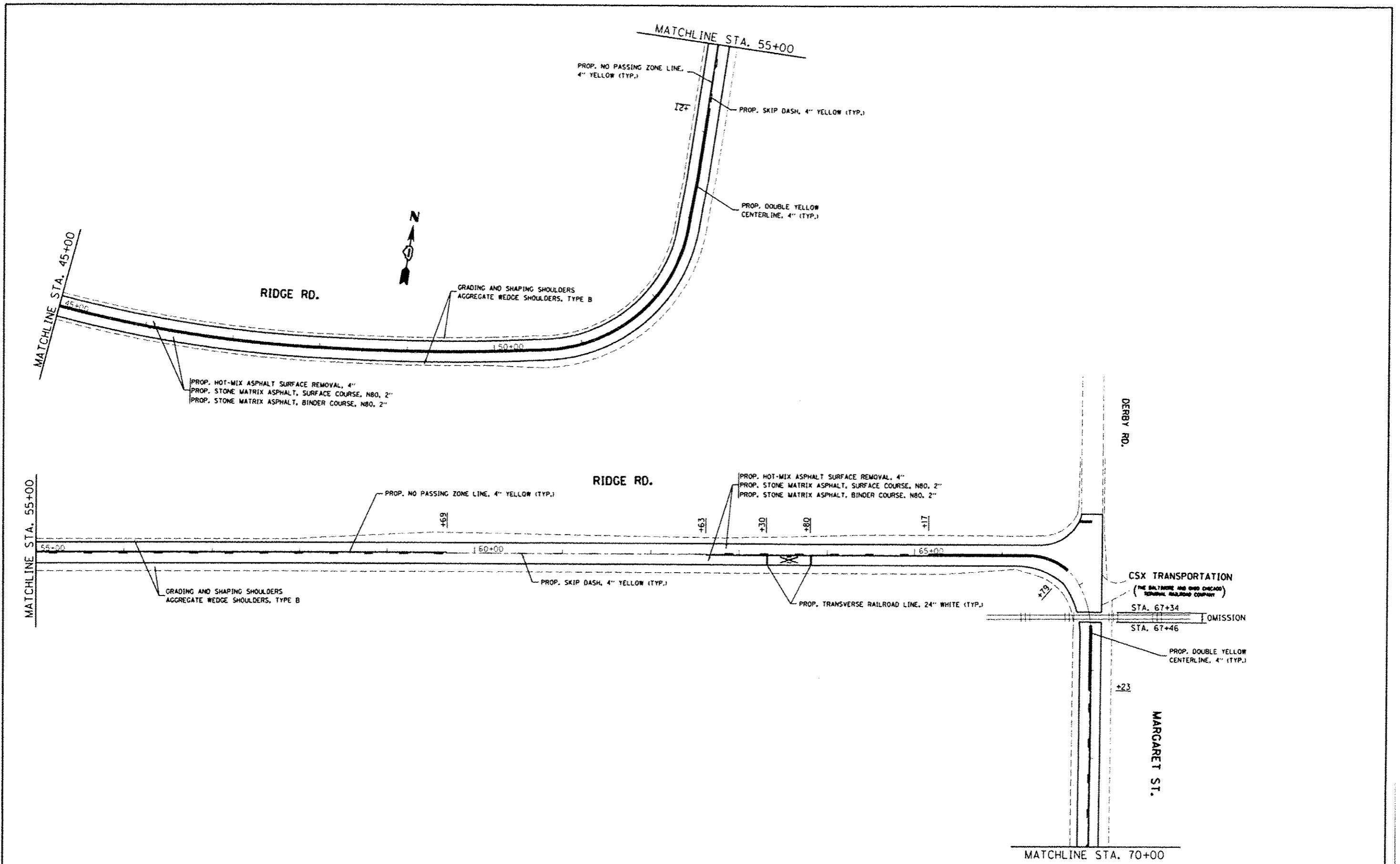
Rev. 1-3-13

* SPECIALTY ITEMS
 NON-PARTICIPATING ITEMS



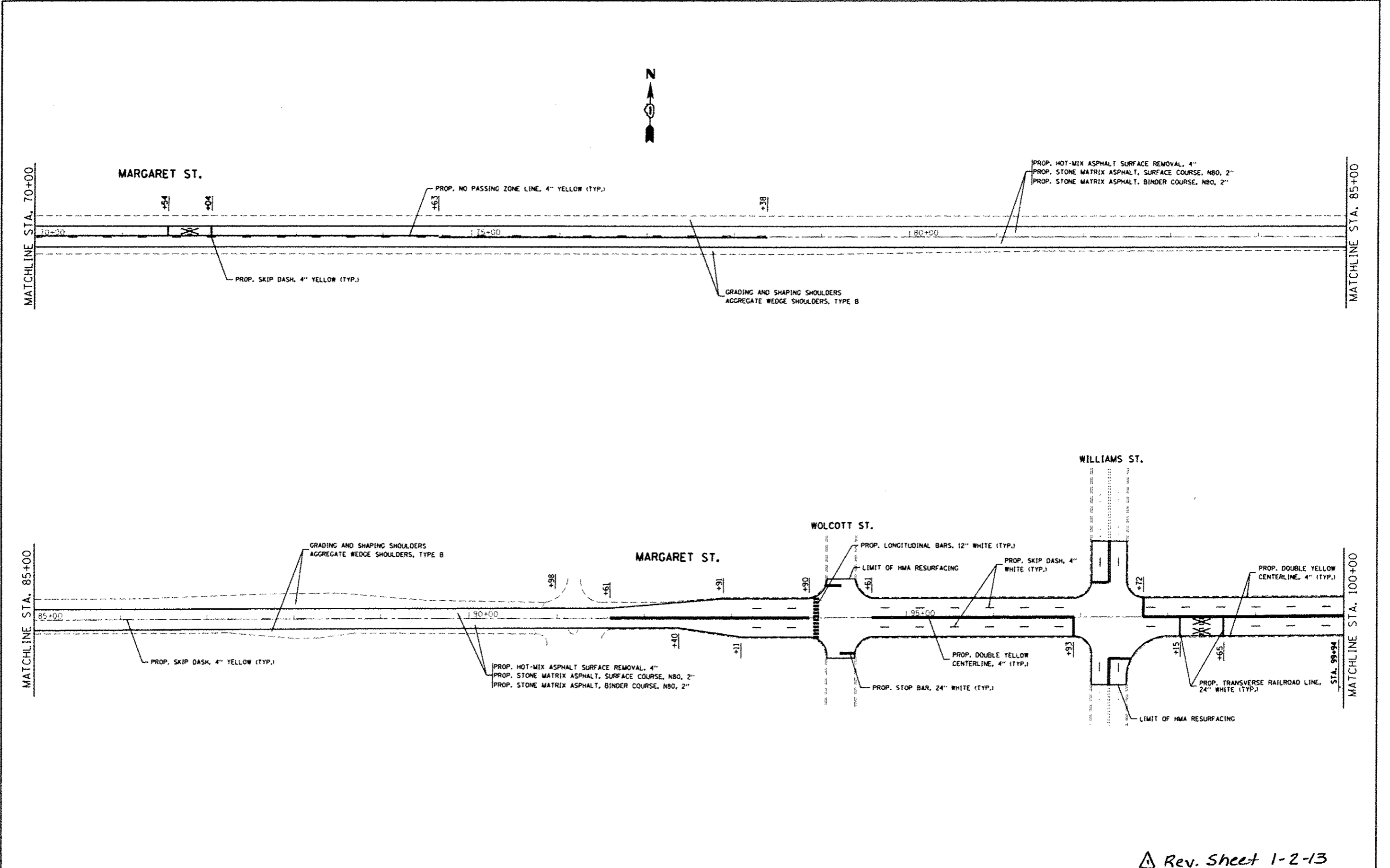
FILE NAME: USER NAME: wteedpa DESIGNED: DRAWN: CHECKED: DATE:	USER NAME: wteedpa DESIGNED:	REVISED:	STATE OF ILLINOIS DEPARTMENT OF TRANSPORTATION	ROADWAY AND PAVEMENT MARKING PLAN RIDGE ROAD & MARGARET STREET--IL 1 (HALSTED ST.) TO SCHWAB ST.		F.A.D. RTE.: 1620 SECTION: 44-RS-2 COUNTY: COOK CONTRACT NO.: 60M39	
	PLOT SCALE: 1/8"=1'-0" PLOT DATE: 12-28-2012	CHECKED:		REVISED:	SCALE: 1"=50' SHEET NO. OF SHEETS: STA. TO STA.	TOTAL SHEET SHEETS: NO. 30 ? ILLINOIS FED. AID PROJECT	
				DATE:			
				REVISED:			

Rev. Sheet 1-2-13



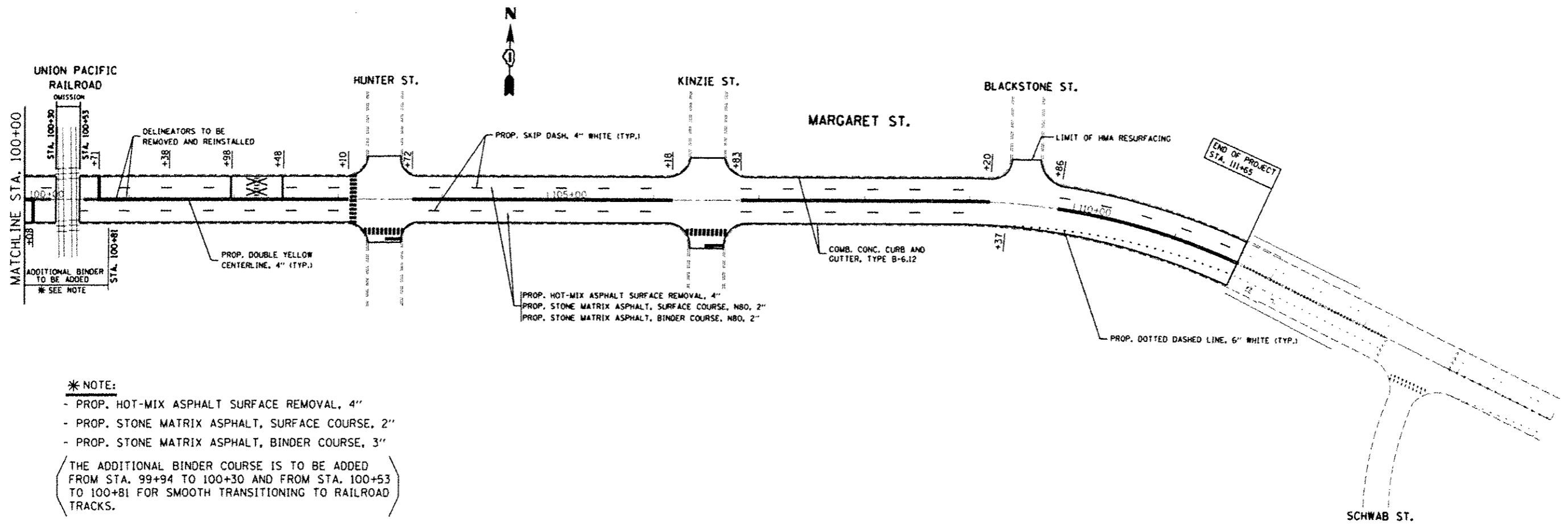
Rev. Sheet 1-2-13

FILE NAME - c:\pwworkspace\pds\steed\pds249567-0110	USER NAME - steed	DESIGNED	REVISED	STATE OF ILLINOIS DEPARTMENT OF TRANSPORTATION	ROADWAY AND PAVEMENT MARKING PLAN RIDGE ROAD & MARGARET STREET--(L 1 (HALSTED ST.) TO SCHWAB ST.		P.A.U. RTE. 1620 SECTION 44-RS-2 COUNTY COOK TOTAL SHEETS 30 SHEET NO. 8 CONTRACT NO. 60M39 FED. ROAD DIST. NO. 1 (ILLINOIS FED. AID PROJECT)
	PLT SCALE - 1/4"=30'	CHECKED	REVISED		SCALE: 1"=50'	SHEET NO. OF SHEETS STA. TO STA.	
	PLT DATE - 12-28-2012	DATE	REVISED				



Rev. Sheet 1-2-13

FILE NAME: c:\p\work\p\ridg\std\std02495671010\11-std-plan.dwg	USER NAME: glnedra	DESIGNED: -	REVISED: -	STATE OF ILLINOIS DEPARTMENT OF TRANSPORTATION	ROADWAY AND PAVEMENT MARKING PLAN			F.A.W. RTE. 1620	SECTION 44-R5-2	COUNTY COOK	TOTAL SHEETS 30	SHEET NO. 9
PLOT SCALE: 1/8"=1'-0"		DRAWN: -	REVISED: -		RIDGE ROAD & MARGARET STREET--IL 1 (HALSTED ST.) TO SCHWAB ST.			CONTRACT NO. 60M39				
PLOT DATE: 12/28/2012		CHECKED: -	REVISED: -		SCALE: 1"=50'			SHEET NO. OF SHEETS		STA. TO STA.		
		DATE: -	REVISED: -		FED. ROAD DIST. NO. 1 (ILLINOIS) FED. AID PROJECT							



*** NOTE:**

- PROP. HOT-MIX ASPHALT SURFACE REMOVAL, 4"
- PROP. STONE MATRIX ASPHALT, SURFACE COURSE, 2"
- PROP. STONE MATRIX ASPHALT, BINDER COURSE, 3"

(THE ADDITIONAL BINDER COURSE IS TO BE ADDED FROM STA. 99+94 TO 100+30 AND FROM STA. 100+53 TO 100+81 FOR SMOOTH TRANSITIONING TO RAILROAD TRACKS.)

FILE NAME: c:\p\work\p1620\trndoc\1624955710110	USER NAME: kstanon	DESIGNED: -	REVISED: -	STATE OF ILLINOIS DEPARTMENT OF TRANSPORTATION	ROADWAY AND PAVEMENT MARKING PLAN		F.A.U. RTE.:	SECTION	COUNTY	TOTAL SHEETS	SHEET NO.
	PLOT SCALE: 1"=50'	DRAWN: -	REVISED: -		RIDGE ROAD & MARGARET STREET--IL 1 (HALSTED ST.) TO SCHWAB ST.		1620	44-RS-2	COOK	30	10
	PLOT DATE: 12/20/2012	CHECKED: -	REVISED: -		SCALE: 1"=50'	SHEET NO.	OF SHEETS	STA.	TO STA.	CONTRACT NO. 60M39	
		DATE: -	REVISED: -		FED. ROAD DIST. NO. 1 ILLINOIS FED. AID PROJECT						

Rev. Sheet 1-2-13