

MAINTENANCE OF TRAFFIC GENERAL NOTES

1. THE MAINTENANCE OF TRAFFIC CONTROL (MOT) PLANS SHALL SERVE AS A GUIDE FOR SAFE DIVERSION OF TRAFFIC DURING EXECUTION OF THIS CONTRACT. HOWEVER, THE CONTRACTOR MAY MODIFY THE MOT PLANS TO MEET CONSTRUCTION NEEDS BUT NOT AT THE EXPENSE OF PUBLIC SAFETY OR CONVENIENCE. ANY CHANGES TO THE MOT PLANS SHALL BE SUBMITTED TO THE ENGINEER FOR APPROVAL.
2. THE ENGINEER SHALL BE INFORMED 48 HOURS IN ADVANCE OF ANY CHANGE TO THE MOT PLANS.
3. ALL EXISTING PAVEMENT MARKINGS IN CONFLICT WITH THE MAINTENANCE OF TRAFFIC STRIPING SHALL BE REMOVED. THIS WORK WILL BE PAID FOR AT THE CONTRACT UNIT PRICE PER SQUARE FOOT, "PAVEMENT MARKING REMOVAL".
4. THE CONTRACTOR SHALL REMOVE ALL TEMPORARY PAVEMENT MARKING TAPE WHICH CONFLICTS WITH THE NEXT STAGE OR FINAL STRIPING.
5. ALL TRAFFIC CONTROL DEVICES USED FOR THE MAINTENANCE OF TRAFFIC, AS DETAILED ON THE PLANS, OR HIGHWAY STANDARD SHALL BE REFLECTORIZED PRIOR TO INSTALLATION AND CLEANED AS SPECIFIED IN MAINTENANCE OF TRAFFIC SPECIAL PROVISIONS OR AS DIRECTED BY THE ENGINEER.
6. ALL DRUMS, VERTICAL PANELS AND BARRICADES ADJACENT TO THE EDGE OF TRAVELED WAY SHALL BE EQUIPPED WITH BI-DIRECTIONAL STEADY-BURNING LIGHTS.
7. ALL EXISTING SIGNS WITHIN THE LIMITS OF MAINTENANCE OF TRAFFIC WHICH ARE OBSCURED BY OR OTHERWISE INTERFERED WITH BY THE CONSTRUCTION OPERATIONS AND MAINTENANCE OF TRAFFIC, SHALL BE COVERED OR REMOVED BY THE CONTRACTOR UNLESS SPECIFIED IN THE PLANS OR WHEN DIRECTED BY THE ENGINEER. THIS WORK SHALL BE IN ACCORDANCE WITH ARTICLE 107.25 OF THE IDOT STANDARD SPECIFICATIONS.
8. TEMPORARY, OFF-PEAK HOUR LANE CLOSURES MUST BE REQUESTED THROUGH THE ENGINEER AND AS SPECIFIED IN THE SPECIAL PROVISIONS. THOUGH ONE LANE OF TRAFFIC MUST REMAIN OPEN AT ALL TIMES. WHEN OFF-PEAK HOUR OR WEEKEND LANE CLOSURES ARE REQUIRED, A PORTABLE CHANGEABLE MESSAGE SIGN SHALL BE INSTALLED ONE WEEK PRIOR TO THE CLOSURE. THE MESSAGE SIGN WORDING AND LOCATION WILL BE DETERMINED BY THE ENGINEER. THE COST OF THE PORTABLE CHANGEABLE MESSAGE SIGNS SHALL BE INCIDENTAL TO THE PAY ITEM "TRAFFIC CONTROL AND PROTECTION (SPECIAL)".
9. THE CONTRACTOR SHALL PLACE A CHANGEABLE MESSAGE SIGN AT EACH END OF THE PROJECT AND/OR AS DIRECTED BY THE ENGINEER TO INFORM MOTORISTS OF UPCOMING CONSTRUCTION ACTIVITIES. THE MESSAGE SIGNS WITH THE APPROPRIATE INFORMATION SHALL BE IN PLACED TWO WEEKS BEFORE START OF CONSTRUCTION ACTIVITY. THIS WORK IS TO BE PAID FOR AT THE CONTRACT UNIT PRICE PER CALENDAR MONTH, "CHANGEABLE MESSAGE SIGN". OTHER TEMPORARY SIGNS SHALL BE INCIDENTAL TO THE PAY ITEM "TRAFFIC CONTROL AND PROTECTION (SPECIAL)".
10. FOR ADDITIONAL BRIDGE CONSTRUCTION STAGING INFORMATION, SEE STRUCTURAL PLANS.
11. THE CONTRACTOR SHALL CONTACT THE DISTRICT ONE TRAFFIC CONTROL SUPERVISOR AT (847) 705-4470 A MINIMUM OF 72 HOURS IN ADVANCE OF BEGINNING WORK.

SUGGESTED CONSTRUCTION SEQUENCING

PRESTAGE

CONSTRUCTION:
REMOVE EXISTING PAVEMENT MARKINGS. CONSTRUCT TEMPORARY HMA PAVEMENT ON NORTHBOUND LANE PER STAGE 1 DETAIL ON THE MOT TYPICAL SECTIONS. INSTALL TEMPORARY SIGNALS.

IMPLEMENT STAGE 1 MOT PAVEMENT MARKING AND TRAFFIC CONTROL.

MAINTENANCE OF TRAFFIC:
UTILIZE STANDARD 701321-12 AND 701326-04.

STAGE 1


CONSTRUCTION:
SOUTHBOUND LANE OF IL 47: REMOVE HMA PAVEMENT FROM STATION 1454+50 TO 1471+00. CONSTRUCT THE WEST HALF OF BRIDGE. CONSTRUCT HMA PAVEMENT THROUGH BINDER COURSE. CONSTRUCT HMA SHOULDERS. GRADE ROADSIDE DITCHES ON SB SIDE.

MAINTENANCE OF TRAFFIC:
UTILIZE STANDARD 701321-12.

STAGE 2

CONSTRUCTION:
SILVER GLEN ROAD AND NORTHBOUND LANE OF IL 47: REMOVE HMA PAVEMENT ON IL 47 FROM STATION 1468+00 TO 1470+50. REMOVE HMA PAVEMENT ON SILVER GLEN ROAD FROM STATION 200+00 TO 201+25. CONSTRUCT HMA PAVEMENT THROUGH BINDER COURSE. CONSTRUCT HMA SHOULDERS. GRADE ROADSIDE DITCHES ALONG SILVER GLEN ROAD AND NB SIDE OF IL 47 FROM STATION 1468+00 TO 1470+50.


MAINTENANCE OF TRAFFIC:
UTILIZE STANDARD 701321-12 AND DETOUR PLAN FOR SILVER GLEN ROAD.

BAG AND DISCONNECT SILVER GLEN ROAD TEMPORARY TRAFFIC SIGNALS 

STAGE 3

CONSTRUCTION:
NORTHBOUND LANE OF IL 47: REMOVE HMA PAVEMENT FROM STATION 1454+50 TO 1468+00 AND FROM 1470+50 TO 1471+00. CONSTRUCT EAST HALF OF BRIDGE. CONSTRUCT HMA PAVEMENT THROUGH BINDER COURSE. CONSTRUCT HMA SHOULDERS. GRADE ROADSIDE DITCHES ALONG NB SIDE.


MAINTENANCE OF TRAFFIC:
UTILIZE STANDARD 701321-12 AND OPEN SILVER GLEN ROAD.

REINSTATE SILVER GLEN ROAD TEMPORARY TRAFFIC SIGNALS. 

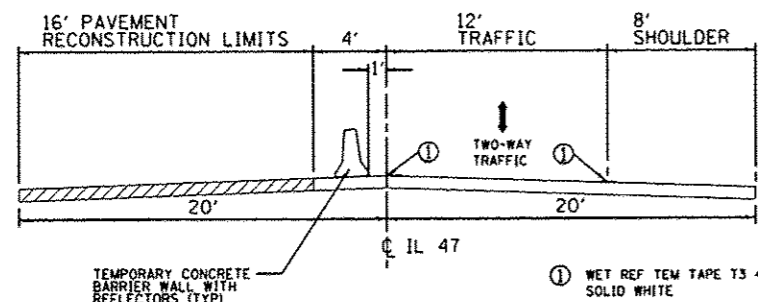
STAGE 4

CONSTRUCTION:
PLACE HMA PAVEMENT SURFACE COURSE, PAVEMENT MARKINGS AND RAISED REFLECTIVE MARKERS, LANDSCAPING, REMOVE TEMPORARY TRAFFIC SIGNALS.

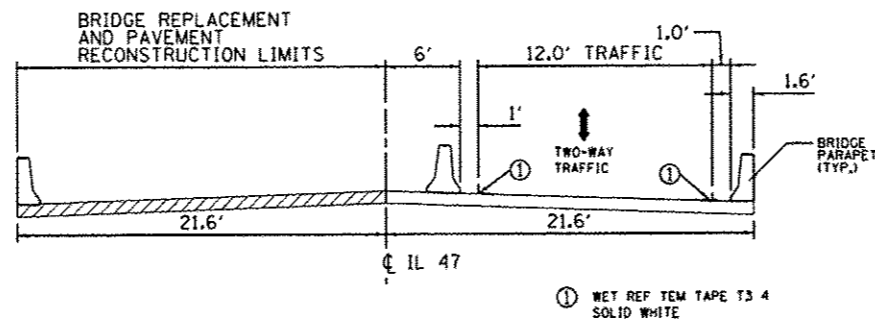
MAINTENANCE OF TRAFFIC:
UTILIZE STANDARD 701006-03, 701201-04, 701306-03, AND 701311-03.

 Rev. 1-3-13

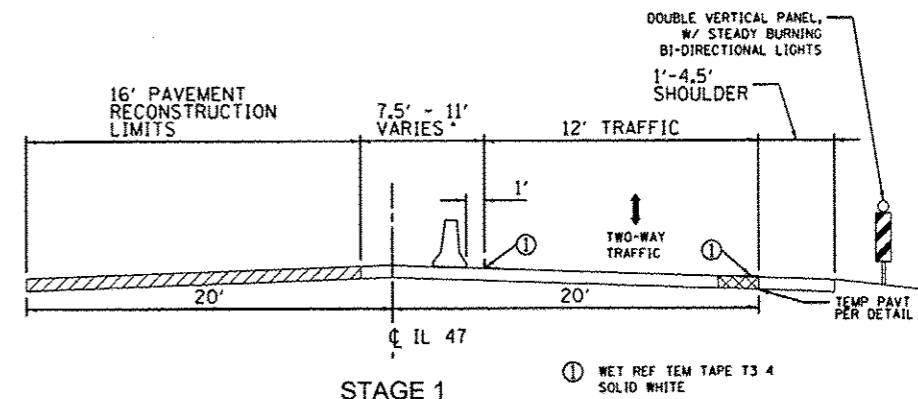
ROBERT E. HAMILTON CONSULTING ENGINEERS, INC. Engineers - Surveyors - Planners Joliet, Illinois (616) 790-3444	USER NAME = rhamilton	DESIGNED - JTS	REVISED - 10-8-2012	STATE OF ILLINOIS DEPARTMENT OF TRANSPORTATION	IL ROUTE 47 OVER VIRGIL DITCH #2 MOT GENERAL NOTES / CONSTRUCTION SEQUENCE			F.A.P. RTE.	SECTION	COUNTY	TOTAL SHEETS	SHEET NO.
		DRAWN - DWS	REVISED - 12-4-2012					326	106X-8	KANE	87	14
	PLOT SCALE = 1/8" = 100.0000' / 1"	CHECKED - JAR	REVISED -					CONTRACT NO. 60N13				
	PLOT DATE = 12/5/2012	DATE - 8-23-2011	REVISED -					SCALE: NONE	SHEET NO. OF SHEETS	STA. TO STA.	FED. ROAD DIST. NO.	ILLINOIS FED. AID PROJECT



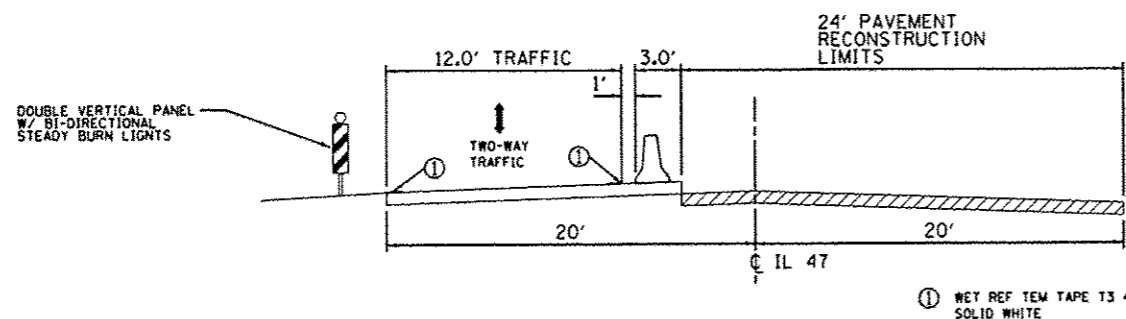
STAGE 1
 STA 1454+50 TO STA 1457+00
 STA 1470+00 TO STA 1471+00



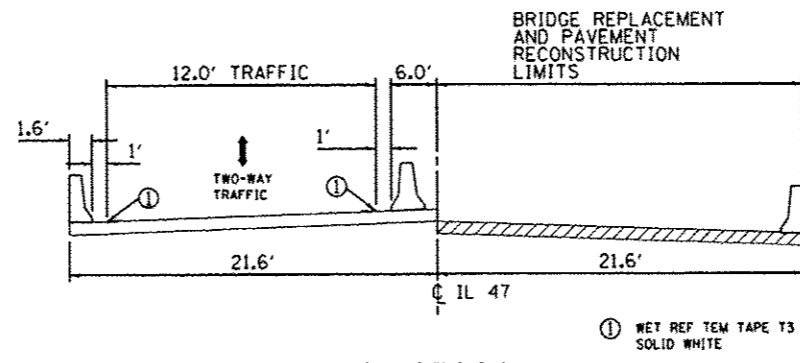
STAGE 1
 STA 1462+20 TO STA 1463+40



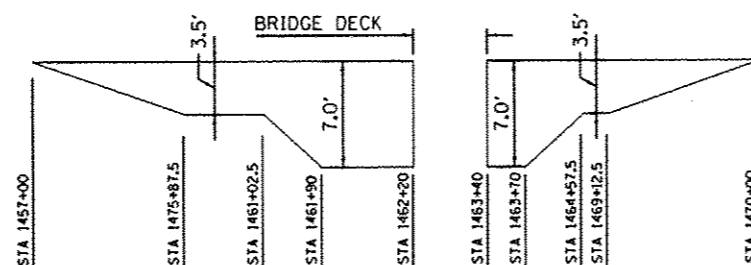
STAGE 1
 STA 1457+00 TO STA 1457+87.5: TAPER FROM 4.0 FT TO 7.5 FT
 STA 1457+87.5 TO STA 1461+02.5: 7.5 FT
 STA 1461+02.5 TO STA 1461+90: TAPER FROM 7.5 FT TO 11.0 FT
 STA 1461+90 TO STA 1462+20: 11.0 FT
 STA 1463+40 TO STA 1463+70: 11.0 FT
 STA 1463+70 TO STA 1464+57.5: TAPER FROM 11.0 FT TO 7.5 FT
 STA 1464+57.5 TO STA 1469+12.5: 7.5 FT
 STA 1469+12.5 TO STA 1470+00: TAPER FROM 7.5 FT TO 4.0 FT



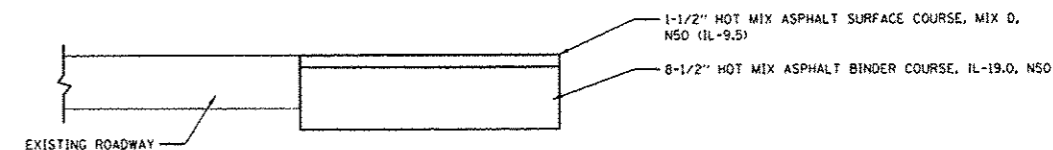
STAGE 2 & 3
 STA 1454+50 TO STA 1462+20
 STA 1463+40 TO STA 1471+00



STAGE 2 & 3
 STA 1462+20 TO STA 1463+40



STAGE 1
 TEMPORARY PAVEMENT DETAIL



TEMPORARY PAVEMENT
 CROSS SECTION

Rev. Sheet 1-3-13

ROBERT E. HAMILTON
 CONSULTING ENGINEERS, INC.
 Engineers - Surveyors - Planners
 Joliet, Illinois (815) 730-9444

USER NAME - rmm
 DESIGNED - JTS
 DRAWN - DWS
 CHECKED - JAR
 DATE - 8-23-2011
 PLT SCALE = 100.0000' / 1" / in.
 PLT DATE = 12/9/2012

DESIGNED - JTS
 DRAWN - DWS
 CHECKED - JAR
 DATE - 8-23-2011

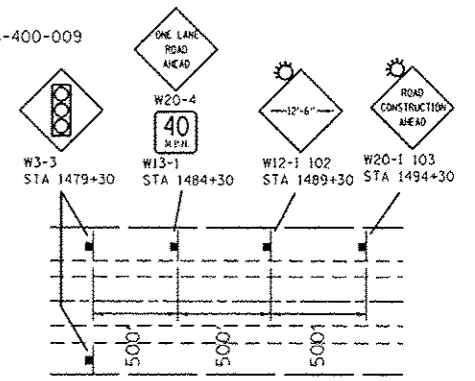
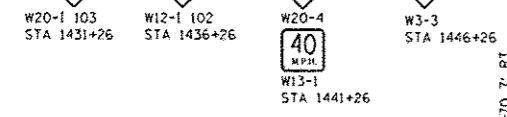
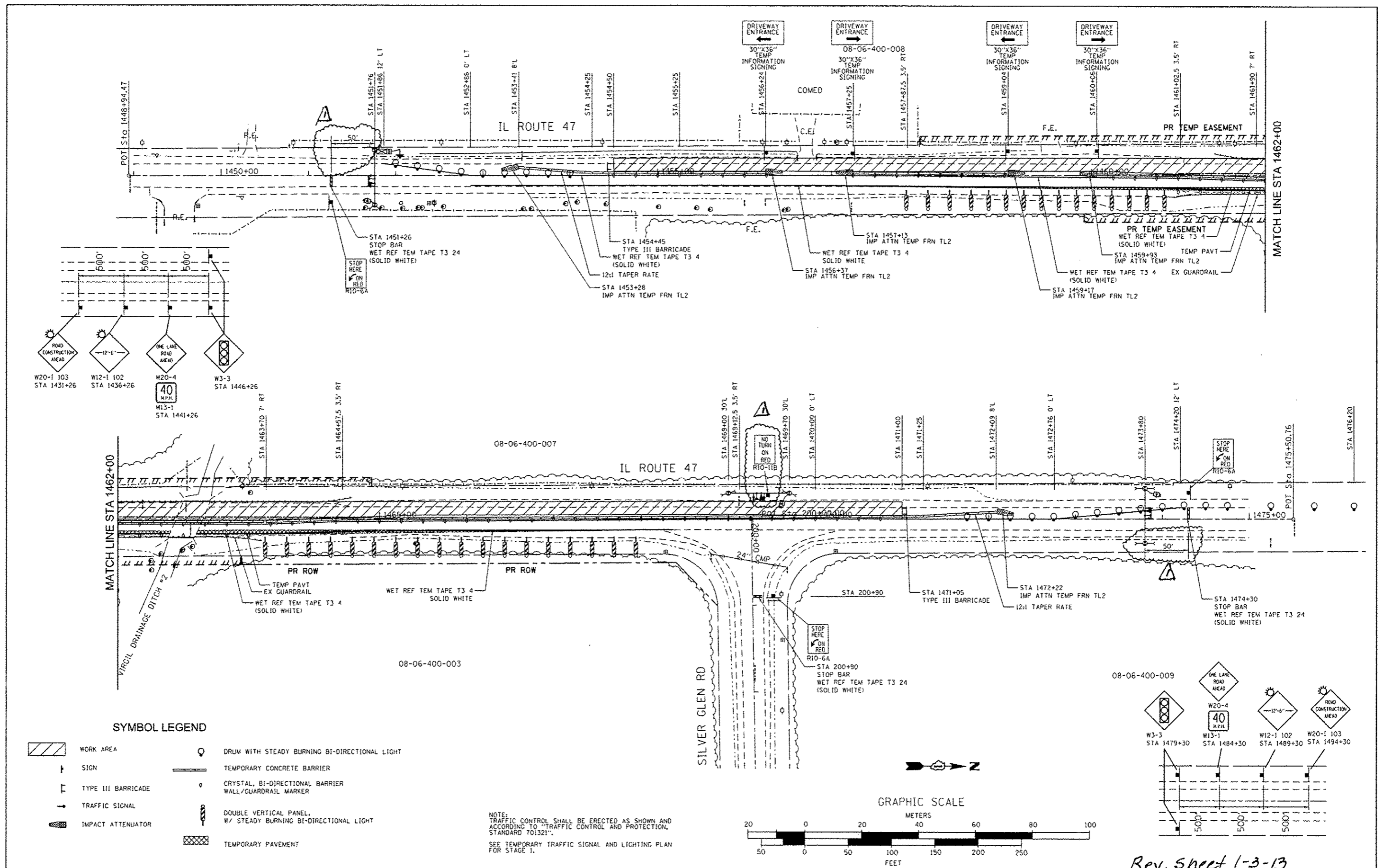
REVISED - 10-8-2012
 REVISED -
 REVISED -
 REVISED -

STATE OF ILLINOIS
 DEPARTMENT OF TRANSPORTATION

IL ROUTE 47 OVER VIRGIL DITCH #2
 MOT TYPICAL SECTIONS

SCALE: NONE SHEET NO. OF SHEETS STA. TO STA.

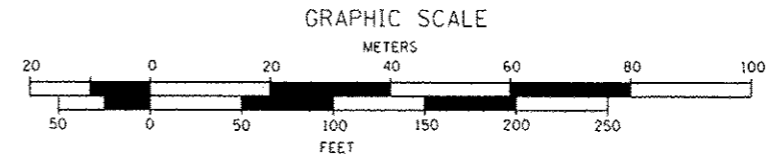
F.A.P. RTE. 326	SECTION 106X-8	COUNTY KANE	TOTAL SHEETS 87	SHEET NO. 15
FED. ROAD DIST. NO. ILLINOIS FED. AID PROJECT			CONTRACT NO. 60N13	



SYMBOL LEGEND

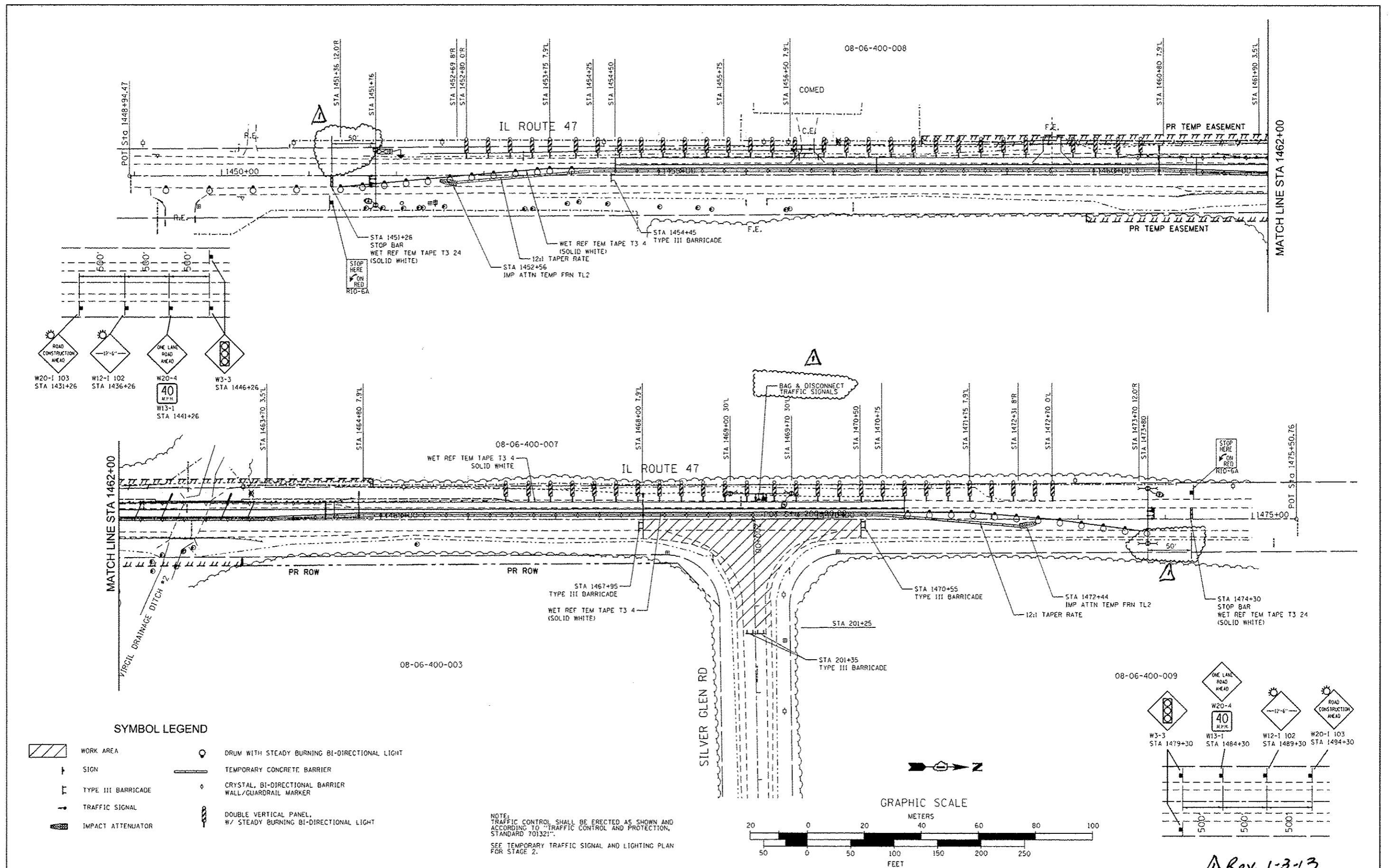
- WORK AREA
- SIGN
- TYPE III BARRICADE
- TRAFFIC SIGNAL
- IMPACT ATTENUATOR
- DRUM WITH STEADY BURNING BI-DIRECTIONAL LIGHT
- TEMPORARY CONCRETE BARRIER
- CRYSTAL, BI-DIRECTIONAL BARRIER WALL/GUARDRAIL MARKER
- DOUBLE VERTICAL PANEL, W/ STEADY BURNING BI-DIRECTIONAL LIGHT
- TEMPORARY PAVEMENT

NOTE:
TRAFFIC CONTROL SHALL BE ERECTED AS SHOWN AND ACCORDING TO "TRAFFIC CONTROL AND PROTECTION, STANDARD 701321".
SEE TEMPORARY TRAFFIC SIGNAL AND LIGHTING PLAN FOR STAGE 1.



ROBERT E. HAMILTON CONSULTING ENGINEERS, INC. Engineers - Surveyors - Planners Joliet, Illinois (815) 730-3444	USER NAME: rmann	DESIGNED: JTS	REVISED: 10-8-2012	STATE OF ILLINOIS DEPARTMENT OF TRANSPORTATION	IL ROUTE 77 OVER VIRGIL DITCH #2 SUGGESTED STAGE OF CONSTRUCTION & TRAFFIC CONTROL - STAGE 1			F.A.P. RTE.: 326	SECTION: 106X-B	COUNTY: KANE	TOTAL SHEETS: 87	SHEET NO.: 16
	PLOT SCALE: 1/8" = 100'	CHECKED: JAR	REVISED:		SCALE: 1" = 50'	SHEET NO. OF SHEETS:	STA. TO STA.:	FED. ROAD DIST. NO.:	ILLINOIS FED. AID PROJECT:	CONTRACT NO. 60N13		
	PLOT DATE: 12/5/2012	DATE: 8-23-2011	REVISED:									

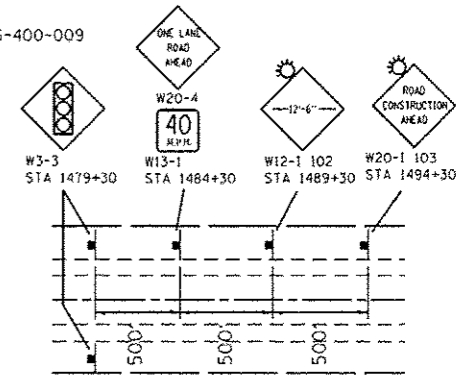
Rev. sheet 1-3-13



SYMBOL LEGEND

- WORK AREA
- SIGN
- TYPE III BARRICADE
- TRAFFIC SIGNAL
- IMPACT ATTENUATOR
- DRUM WITH STEADY BURNING BI-DIRECTIONAL LIGHT
- TEMPORARY CONCRETE BARRIER
- CRYSTAL, BI-DIRECTIONAL BARRIER WALL/GUARDRAIL MARKER
- DOUBLE VERTICAL PANEL, W/ STEADY BURNING BI-DIRECTIONAL LIGHT

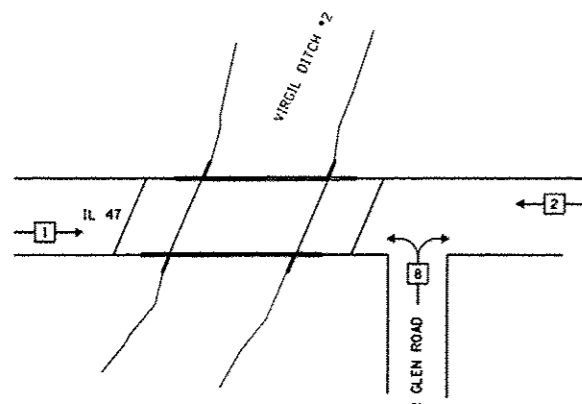
NOTE:
TRAFFIC CONTROL SHALL BE ERECTED AS SHOWN AND ACCORDING TO "TRAFFIC CONTROL AND PROTECTION, STANDARD 701321".
SEE TEMPORARY TRAFFIC SIGNAL AND LIGHTING PLAN FOR STAGE 2.



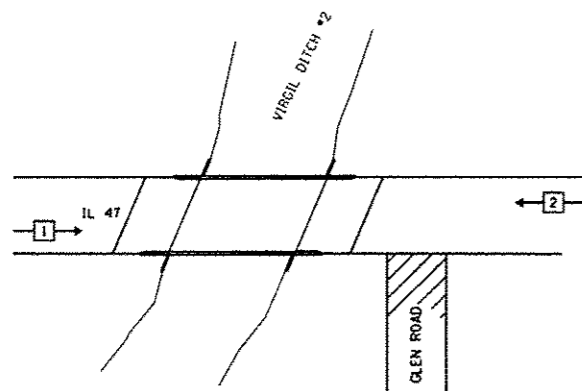
Rev. 1-3-13

ROBERT E. HAMILTON CONSULTING ENGINEERS, INC. Engineers - Surveyors - Planners Joliet, Illinois (815) 730-2444	USER NAME: jmann	DESIGNED - JTS	REVISED - 10-8-2012	STATE OF ILLINOIS DEPARTMENT OF TRANSPORTATION	IL ROUTE 47 OVER VIRGIL DITCH #2 SUGGESTED STAGE OF CONSTRUCTION & TRAFFIC CONTROL - STAGE 2			F.A.P. RTE. 326	SECTION 106X-8	COUNTY KANE	TOTAL SHEETS 87	SHEET NO. 17
	PLLOT SCALE: 100.0000' / in.	CHECKED - JAR	REVISED - 12-4-2012		SCALE: 1"=50'	SHEET NO. OF SHEETS	STA. TO STA.	CONTRACT NO. 60N13				
	PLLOT DATE: 12/5/2012	DATE - 8-23-2011	REVISED -					FED. ROAD DIST. NO. [ILLINOIS] FED. AID PROJECT				

TEMPORARY PHASE DESIGNATION DIAGRAM

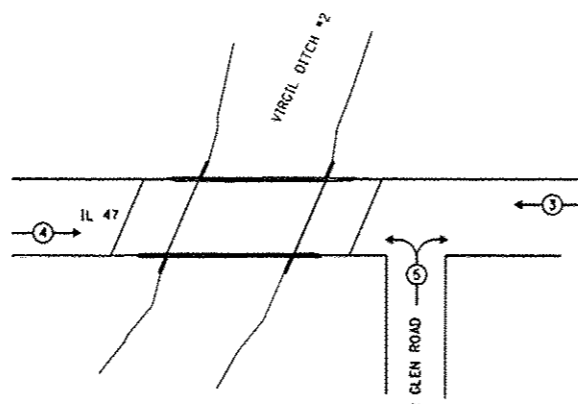


CONTROLLER SEQUENCE
CONSTRUCTION STAGES 1 AND 3



CONTROLLER SEQUENCE
CONSTRUCTION STAGE 2

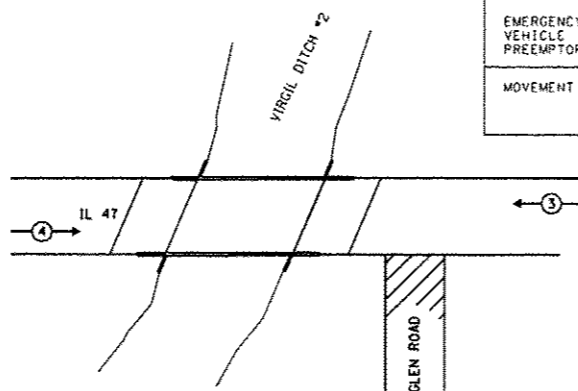
TEMPORARY EMERGENCY VEHICLE PREEMPTION SEQUENCE



CONSTRUCTION STAGES 1 AND 3

STAGES 1 AND 3

TEMPORARY EMERGENCY VEHICLE PREEMPTORS			
EMERGENCY VEHICLE PREEMPTOR	3	4	5
MOVEMENT	←	→	↔



CONSTRUCTION STAGE 2

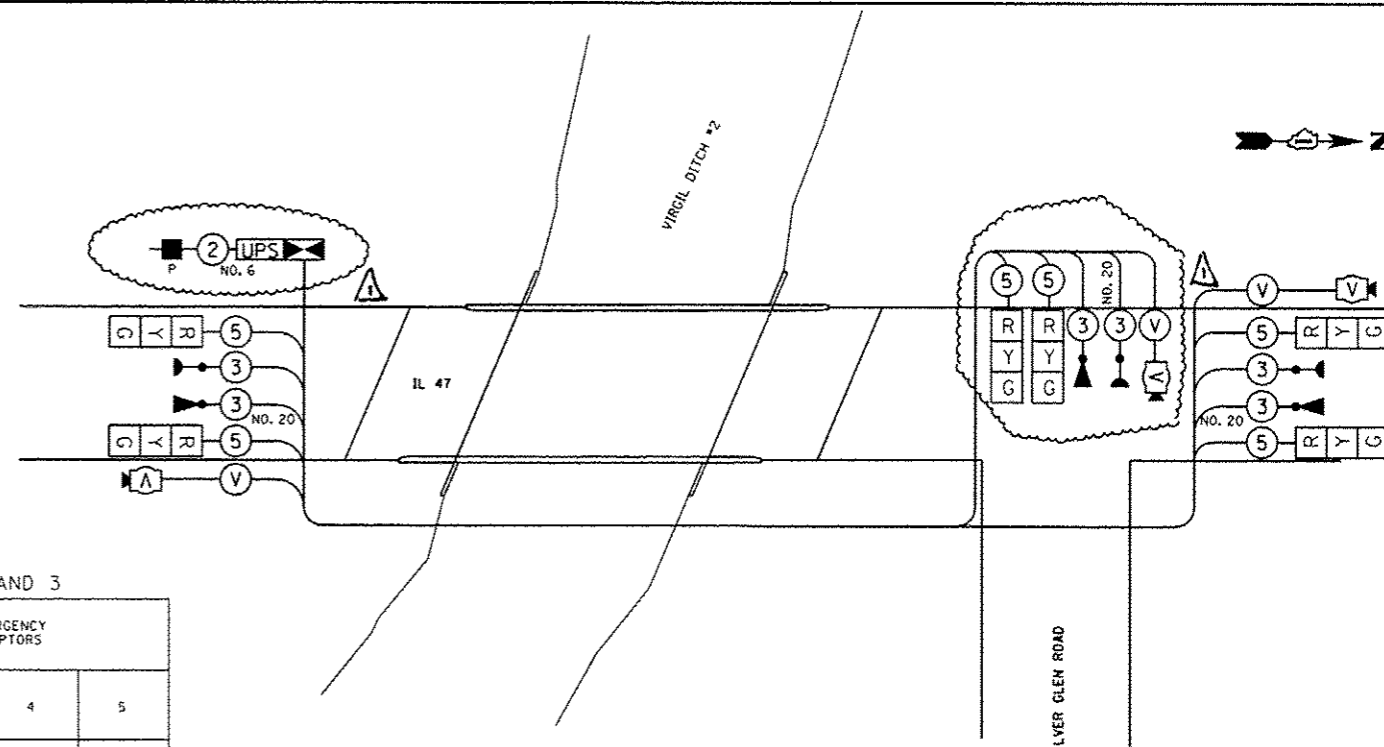
STAGES 2

TEMPORARY EMERGENCY VEHICLE PREEMPTORS			
EMERGENCY VEHICLE PREEMPTOR	3	4	
MOVEMENT	←	→	

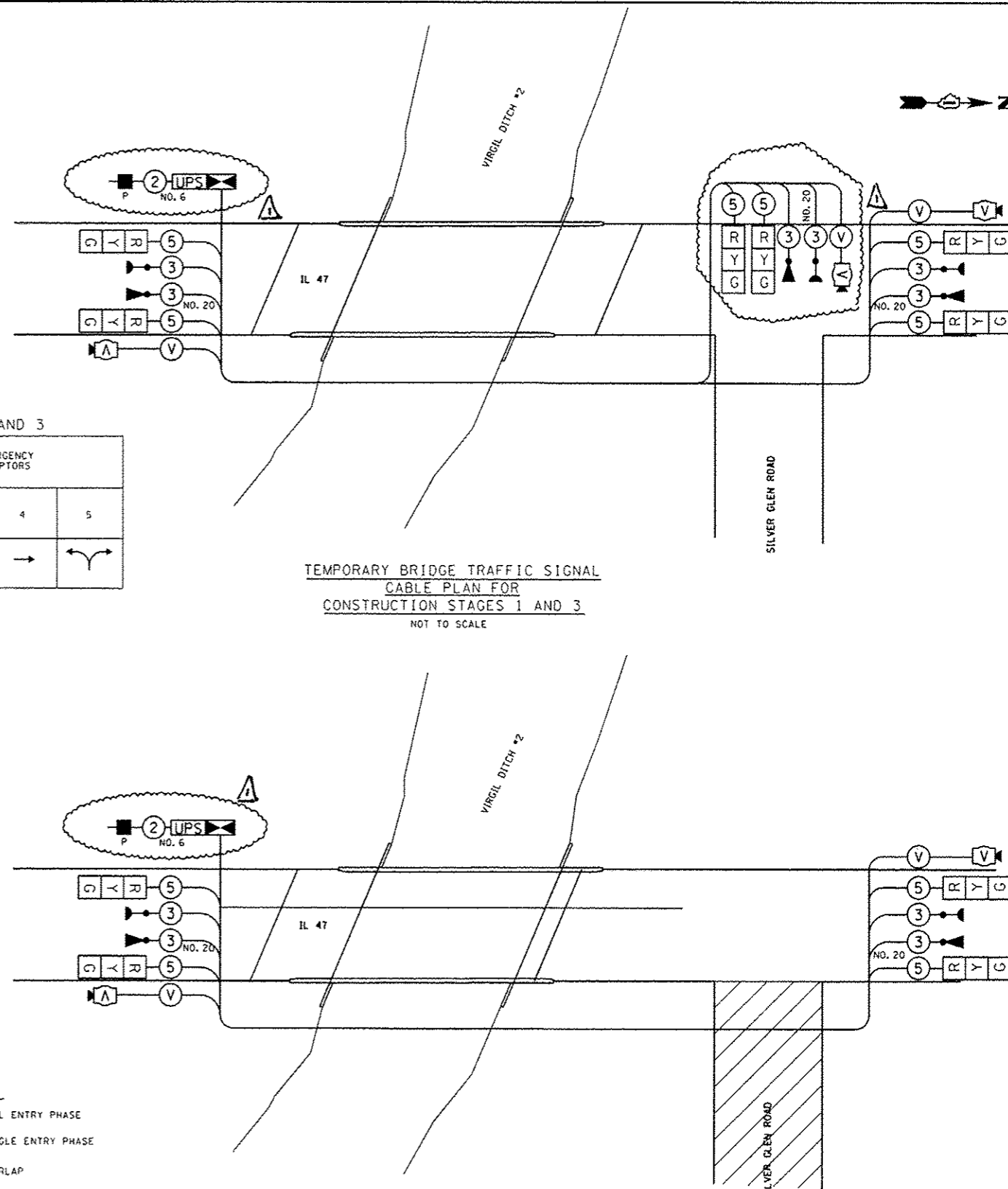
SCHEDULE OF QUANTITIES

QUANTITY	UNIT	ITEM
1	EACH	TEMPORARY BRIDGE TRAFFIC SIGNAL INSTALLATION

TEMPORARY BRIDGE TRAFFIC SIGNAL
CABLE PLAN FOR
CONSTRUCTION STAGES 1 AND 3
NOT TO SCALE



TEMPORARY BRIDGE TRAFFIC SIGNAL
CABLE PLAN FOR
CONSTRUCTION STAGES 2
NOT TO SCALE



- LEGEND
- ⊕ DUAL ENTRY PHASE
 - ⊖ SINGLE ENTRY PHASE
 - ⊕, ⊖ O. L. OVERLAP
 - ⊕ PEDESTRIAN PHASE
 - * NUMBER REFERS TO ASSOCIATED PHASE

I. D. O. T. TRAFFIC SIGNAL INSTALLATION ELECTRICAL SERVICE REQUIREMENTS					TOTAL WATTAGE
TYPE	NO. LAMPS	WATTAGE		OPERATION	
		INCAND.	LED		
SIGNAL (RED)	6	134	17	0.50	51
(YELLOW)	6	134	25	0.25	37.5
(GREEN)	6	134	15	0.25	22.5
ARROW	6	0	0	0	0
PED. SIGNAL	90	25		1.00	
CONTROLLER	100	100		1.00	100
ILLUM. SIGN				0.05	
VIDEO SYSTEM		150		1.00	150
FLASHER					
ENERGY COSTS TO: ILLINOIS DEPARTMENT OF TRANSPORTATION 201 WEST CENTER COURT SCHAUMBURG, ILLINOIS 60196-1096					TOTAL = 361.0
ENERGY SUPPLY CONTACT: THOMAS PERKINS PHONE: 847-894-7968 COMPANY: COM ED EMAIL: THOMAS.PERKINS@COMED.COM					

THE CONTRACTOR SHALL VERIFY THE
POWER LOCATION WITH COMED PRIOR
TO COMMENCING OF THE WORK.

Rev. Sheet 1-3-13

ROBERT E. HAMILTON
CONSULTING ENGINEERS, INC.
Engineers - Surveyors - Planners
Joliet, Illinois (815) 730-3444

USER NAME: rhamilton
DESIGNED - JTS
DRAWN - DWS
CHECKED - JAR
PLOT DATE: 12/5/2012
DATE: 8-23-2011

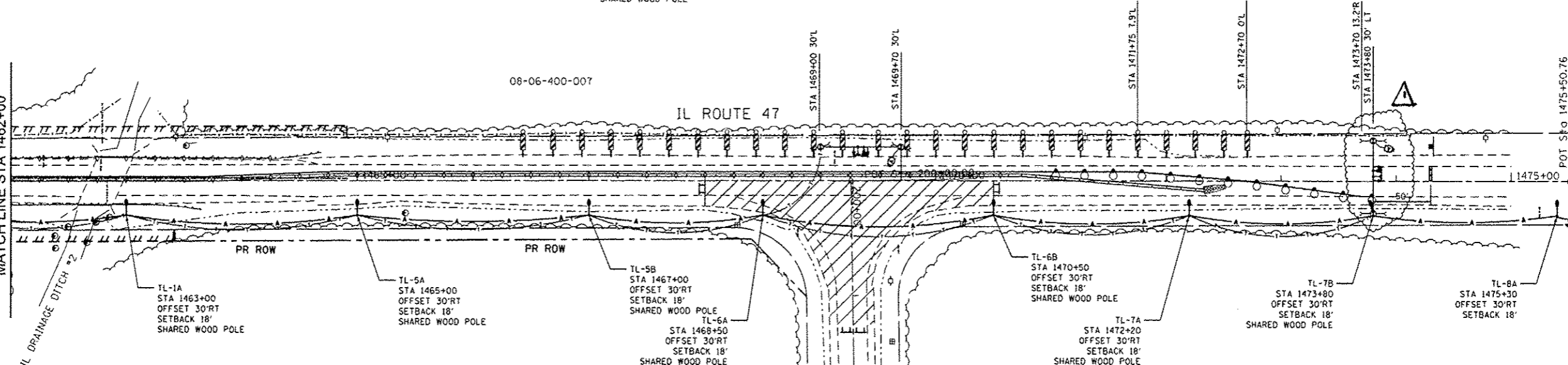
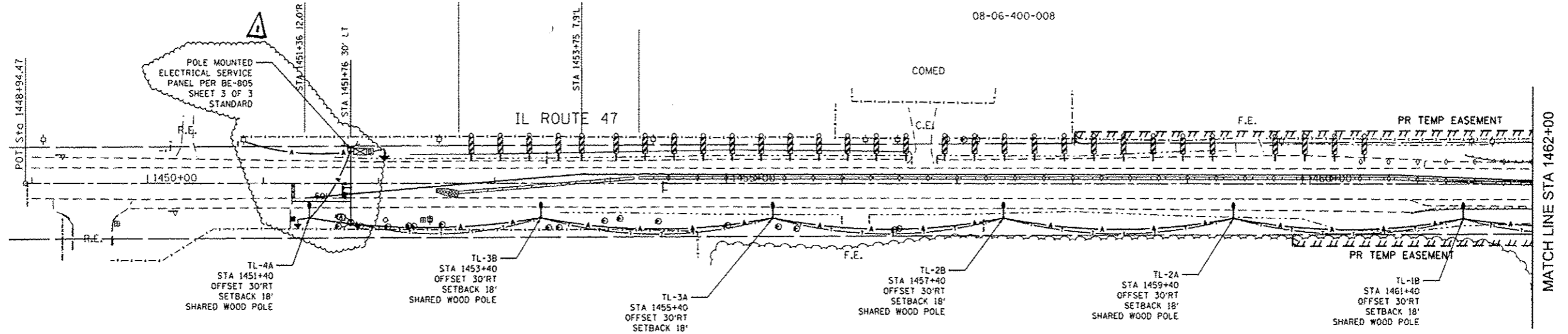
REVISOR: 12-4-2012
REVISOR:
REVISOR:
REVISOR:

STATE OF ILLINOIS
DEPARTMENT OF TRANSPORTATION

IL ROUTE 47 OVER VIRGIL DITCH #2
TEMPORARY CABLE PLAN, TEMPORARY PHASE DESIGNATION DIAGRAM,
SCHEDULE OF QUANTITIES

SCALE: NONE SHEET NO. OF SHEETS STA. TO STA.

F.A.P. R.T.E.	SECTION	COUNTY	TOTAL SHEETS	SHEET NO.
326	106X-8	KANE	87	35
FED. ROAD DIST. NO. ILLINOIS FED. AID PROJECT			CONTRACT NO. 60N13	



NOTES FOR LIGHTING

- CONTACT TO THE ELECTRIC UTILITY SHALL BE INITIATED BEFORE THE PRECONSTRUCTION MEETING, AND DOCUMENTATION OF CONTACT SHALL BE PRESENTED AT THE MEETING. NO PLACEMENT OF POLES WILL BE ALLOWED WITHOUT EVIDENCE OF SIGNED AGREEMENT WITH THE ELECTRIC UTILITY, FURNISHED TO THE ENGINEER.
- THE ELECTRIC SERVICE SHALL BE 240/120V, WHERE 240 V SERVICE IS NOT AVAILABLE CONTRACTOR WILL SUBMIT A PROPOSAL FOR 120V SERVICE. DROP CABLE MAIN BREAKER AND ALL OTHER SERVICE APPURTENANCES SHALL BE APPROPRIATELY RATED & INCLUDED REGARDLESS OF THE SERVICE VOLTAGE APPLIED.
- LIGHT POLE SETBACK FROM THE EDGE OF TRAVELED PAVEMENT IS 18 FT.
- EACH LIGHTING UNIT SHALL BE CONTROLLED BY A PHOTO CELL MOUNTED ON EACH LUMINAIRE FED FROM TEMPORARY SERVICE DISCONNECT BOX. OTHER MEANS OF LUMINAIRE CONTROL CAN BE CONSIDERED IF APPROVED BY THE ENGINEER.
- CONTRACTOR SHALL SPLICE AERIAL CABLE AT THE LIGHT POLE USING HEAT SHRINKABLE CAPS WITH THE FACTORY APPLIED WATER PROOF SEALANT OR APPROVED UL LISTED AERIAL TAP DEVICE. ALL AREAS DISTURBED UNDER THIS CONTRACT SHALL BE RESTORED TO ORIGINAL CONDITION TO SATISFACTION OF ENGINEER.
- REMOVAL OF TEMPORARY LIGHTS IS INCLUDED IN THE PAY ITEM "TEMPORARY LIGHTING FOR SINGLE LANE STAGING."

NOTES FOR TEMPORARY TRAFFIC SIGNALS

- ALL CONTROL EQUIPMENT INCLUDING EMERGENCY PRE-EMPTION AND COMMUNICATION DEVICES FOR THE TEMPORARY TRAFFIC SIGNAL(S) SHALL BE FURNISHED BY THE CONTRACTOR.
- ONLY CONTROLLERS SUPPLIED BY ONE OF THE IDOT DISTRICT ONE APPROVED CLOSED LOOP EQUIPMENT MANUFACTURERS WILL BE APPROVED FOR USE AT TEMPORARY SIGNAL LOCATIONS. ALL CONTROLLERS USED FOR TEMPORARY TRAFFIC SIGNALS SHALL BE FULLY ACTIVATED NEMA MICROPROCESSOR BASED WITH RS232 DATA ENTRY PORTS COMPATIBLE WITH EXISTING MONITORING SOFTWARE APPROVED BY IDOT DISTRICT 1, INSTALLED IN A NEMA TS2 CABINET. ONLY ONE BRAND OF CONTROLLER WILL BE ACCEPTED FOR ANY ONE CONTRACT.

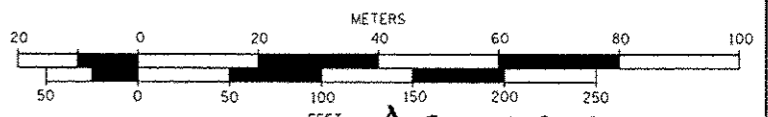
- ALL TRAFFIC SIGNAL SECTIONS AND PEDESTRIAN SIGNAL SECTIONS SHALL BE LED AND 12" (300MM) DIAMETER. HEADS SHALL BE PLACED AS INDICATED ON THE TEMPORARY TRAFFIC SIGNAL PLAN OR AS DIRECTED BY THE ENGINEER. PEDESTRIAN SIGNALS SHALL INCLUDE SOLID INTERNATIONAL SYMBOLS. PEDESTRIAN SIGNALS WITH COUNTDOWN TIMERS SHALL BE USED WHEN THE EXISTING INSTALLATION UTILIZES COUNTDOWN TYPE OR AS DIRECTED BY THE ENGINEER. COUNTDOWN TYPE PEDESTRIAN SIGNALS ARE NOT TO BE INSTALLED AT A RAILROAD INTERSECTION. THE CONTRACTOR SHALL FURNISH ENOUGH CABLE SLACK TO RELOCATE HEADS TO ANY POSITION ON THE SPAN WIRE OR AT LOCATIONS ILLUSTRATED ON THE PLANS FOR CONSTRUCTION STAGING. THE TEMPORARY TRAFFIC SIGNAL SHALL REMAIN IN OPERATION DURING ALL SIGNAL HEAD RELOCATIONS. EACH TEMPORARY TRAFFIC SIGNAL HEAD SHALL HAVE ITS OWN CABLE FROM THE CONTROLLER CABINET TO THE SIGNAL HEAD.
- ALL EXISTING STREET NAME AND INTERSECTION REGULATORY SIGNS SHALL BE REMOVED FROM EXISTING POLES, RELOCATED AND SECURELY FASTENED TO THE SPAN WIRE OR WOOD POLE AS DIRECTED BY THE ENGINEER.
- ANY TEMPORARY SIGNAL WITHIN AN EXISTING CLOSED LOOP TRAFFIC SIGNAL SYSTEM SHALL BE INTERCONNECTED TO THAT SYSTEM USING SIMILAR BRAND CONTROL EQUIPMENT.
- TRAFFIC SIGNAL MANAGEMENT SYSTEMS SHALL BE MAINTAINED IN OPERATION AS INDICATED ON THE PLANS OR AS DIRECTED BY THE ENGINEER. REQUIRED EQUIPMENT SHALL BE AS SHOWN ON THE PLANS AND THE CONTRACTOR SHALL PLACE THE EQUIPMENT IN OPERATION TO THE SATISFACTION OF THE ENGINEER AND THE AGENCY RESPONSIBLE FOR THE TRAFFIC SIGNAL MANAGEMENT SYSTEM.
- DETECTION AT TEMPORARY TRAFFIC SIGNALS SHALL BE INCLUDED FOR ALL APPROACHES OF THE INTERSECTION UNLESS INDICATED OTHERWISE ON THE PLANS. THE DETECTION SYSTEM MUST MEET THE SPECIFICATIONS OF IDOT DISTRICT 1 AND THE CONTRACTOR SHALL PLACE THE DETECTORS INTO OPERATION TO THE SATISFACTION OF THE ENGINEER.
- WHEN PAN, TILT, ZOOM CAMERAS ARE INSTALLED AT THE EXISTING INTERSECTION OR ARE CALLED FOR IN THE PLANS, THE CONTRACTOR SHALL BE RESPONSIBLE FOR INSTALLING AND MAINTAINING THE CAMERAS TO THE SATISFACTION OF THE ENGINEER AND THE AGENCY RESPONSIBLE FOR THE CAMERAS.
- THE CONTRACTOR SHALL VERIFY THE POWER LOCATION AND HEIGHT AND LOCATION OF TEMPORARY WOOD POLES AT STA. 1451+76 30'LT, 1469+00 30'LT, 1469+70 30'LT, AND 1473+80 30'LT TO VERIFY HORIZONTAL AND VERTICAL CLEARANCES FROM 12KV AND 34 KV LINES IN WEST R.O.R. WITH COMED PRIOR TO COMMENCEMENT OF THE WORK.
- SILVER GLEN ROAD TRAFFIC SIGNALS WILL NOT BE ON FOR STAGE 2. BAG AND DISCONNECT SILVER GLEN ROAD SIGNAL HEADS FOR STAGE 2.

THE CONTRACTOR SHALL VERIFY THE POWER LOCATION WITH COMED PRIOR TO COMMENCEMENT OF THE WORK.

SYMBOL LEGEND

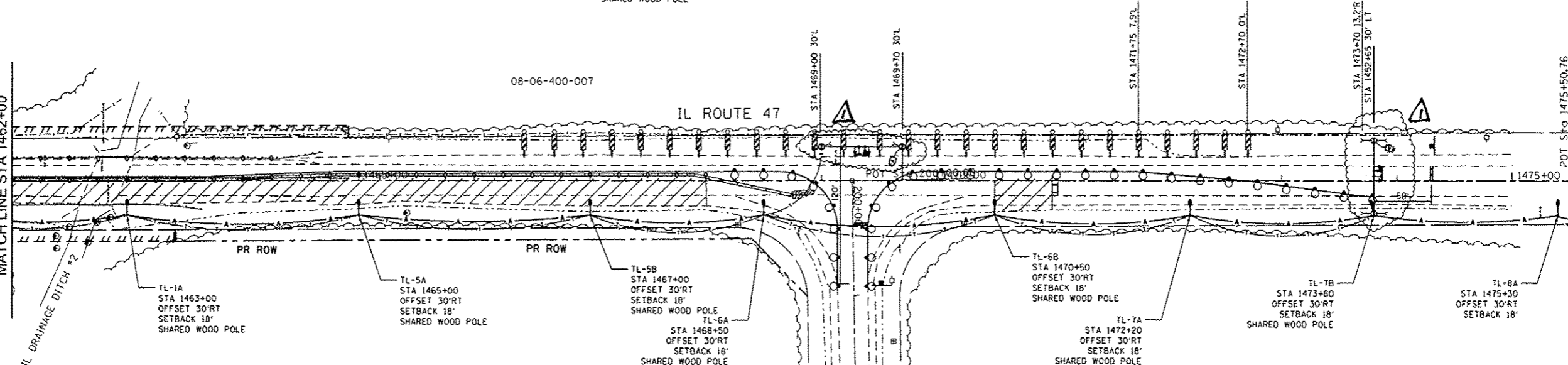
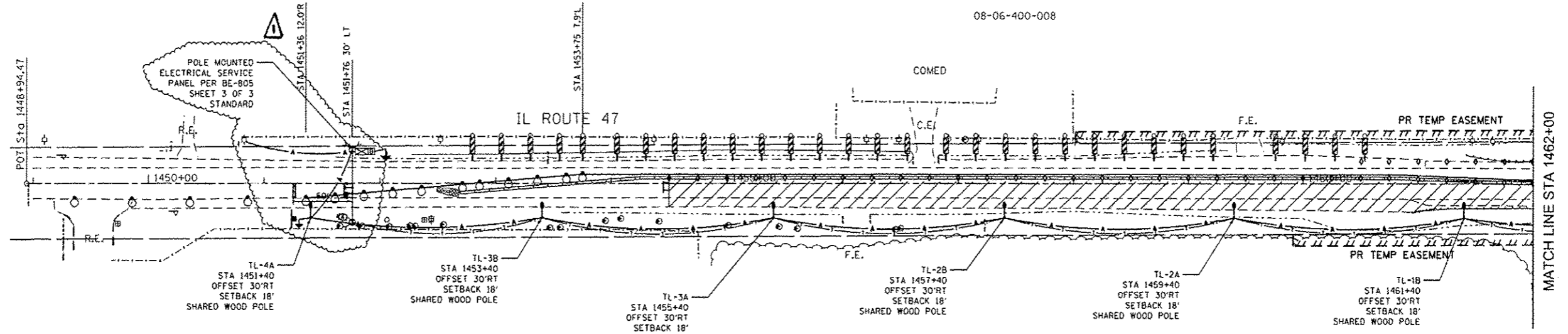
- 400W, 120V MCII HPS, WITH PHOTOCELL, 15' MA, 50' MH ON WOOD POLE, CLASS 4
-
- TL-1A TEMPORARY LIGHTING UNIT NUMBER-ONE CIRCUIT A
-
-
-
-
-
-
-
-
-

GRAPHIC SCALE



Rev. 1-3-13

ROBERT E. HAMILTON CONSULTING ENGINEERS, INC. Engineers - Surveyors - Planners Joliet, Illinois (815) 730-3444		USER NAME: j.hamilton PLOT SCALE: 1/800,000 PLOT DATE: 12/5/2012	DESIGNED - JTS DRAWN - DWS CHECKED - JAR DATE - 8-23-2011	REVISED - 12-4-2012 REVISED - REVISED - REVISED -	STATE OF ILLINOIS DEPARTMENT OF TRANSPORTATION		IL ROUTE 47 OVER VIRGIL DITCH #2 TEMPORARY TRAFFIC SIGNAL AND LIGHTING PLAN FOR STAGE 2		F.A.P. RTE. 326 SECTION 106X-B COUNTY KANE SHEETS 87 OF 37 CONTRACT NO. 60N13	SCALE: 1"=50' SHEET NO. OF SHEETS STA. TO STA.	FED. ROAD DIST. NO. ILLINOIS FED. AID PROJECT
---	--	--	--	--	---	--	--	--	---	---	---



NOTES FOR LIGHTING

- CONTACT TO THE ELECTRIC UTILITY SHALL BE INITIATED BEFORE THE PRECONSTRUCTION MEETING, AND DOCUMENTATION OF CONTACT SHALL BE PRESENTED AT THE MEETING. NO PLACEMENT OF POLES WILL BE ALLOWED WITHOUT EVIDENCE OF SIGNED AGREEMENT WITH THE ELECTRIC UTILITY, FURNISHED TO THE ENGINEER.
- THE ELECTRIC SERVICE SHALL BE 240/120V, WHERE 240 V SERVICE IS NOT AVAILABLE CONTRACTOR WILL SUBMIT A PROPOSAL FOR 120V SERVICE. DROP CABLE MAIN BREAKER AND ALL OTHER SERVICE APPURTENANCES SHALL BE APPROPRIATELY RATED & INCLUDED REGARDLESS OF THE SERVICE VOLTAGE APPLIED.
- LIGHT POLE SETBACK FROM THE EDGE OF TRAVELED PAVEMENT IS 38 FT.
- EACH LIGHTING UNIT SHALL BE CONTROLLED BY A PHOTO CELL MOUNTED ON EACH LUMINAIRE FED FROM TEMPORARY SERVICE DISCONNECT BOX. OTHER MEANS OF LUMINAIRE CONTROL CAN BE CONSIDERED IF APPROVED BY THE ENGINEER.
- CONTRACTOR SHALL SPLICE AERIAL CABLE AT THE LIGHT POLE USING HEAT SHRINKABLE CAPS WITH THE FACTORY APPLIED WATER PROOF SEALANT OR APPROVED UL LISTED AERIAL TAP DEVICE. ALL AREAS DISTURBED UNDER THIS CONTRACT SHALL BE RESTORED TO ORIGINAL CONDITION TO SATISFACTION OF ENGINEER.
- REMOVAL OF TEMPORARY LIGHTS IS INCLUDED IN THE PAY ITEM "TEMPORARY LIGHTING FOR SINGLE LANE STAGING."

NOTES FOR TEMPORARY TRAFFIC SIGNALS

- ALL CONTROL EQUIPMENT INCLUDING EMERGENCY PRE-EMPTION AND COMMUNICATION DEVICES FOR THE TEMPORARY TRAFFIC SIGNAL(S) SHALL BE FURNISHED BY THE CONTRACTOR.
- ONLY CONTROLLERS SUPPLIED BY ONE OF THE IDOT DISTRICT ONE APPROVED CLOSED LOOP EQUIPMENT MANUFACTURERS WILL BE APPROVED FOR USE AT TEMPORARY SIGNAL LOCATIONS. ALL CONTROLLERS USED FOR TEMPORARY TRAFFIC SIGNALS SHALL BE FULLY ACTIVATED NEMA MICROPROCESSOR BASED WITH RS232 DATA ENTRY PORTS COMPATIBLE WITH EXISTING MONITORING SOFTWARE APPROVED BY IDOT DISTRICT 1, INSTALLED IN A NEMA TS2 CABINET. ONLY ONE BRAND OF CONTROLLER WILL BE ACCEPTED FOR ANY ONE CONTRACT.

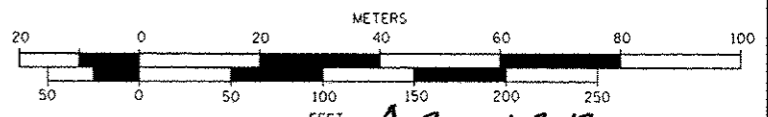
- ALL TRAFFIC SIGNAL SECTIONS AND PEDESTRIAN SIGNAL SECTIONS SHALL BE LED AND 12" (300MM) DIAMETER. HEADS SHALL BE PLACED AS INDICATED ON THE TEMPORARY TRAFFIC SIGNAL PLAN OR AS DIRECTED BY THE ENGINEER. PEDESTRIAN SIGNALS SHALL INCLUDE SOLID INTERNATIONAL SYMBOLS. PEDESTRIAN SIGNALS WITH COUNTDOWN TIMERS SHALL BE USED WHEN THE EXISTING INSTALLATION UTILIZES COUNTDOWN TYPE OR AS DIRECTED BY THE ENGINEER. COUNTDOWN TYPE PEDESTRIAN SIGNALS ARE NOT TO BE INSTALLED AT A RAILROAD INTERSECTION. THE CONTRACTOR SHALL FURNISH ENOUGH CABLE SLACK TO RELOCATE HEADS TO ANY POSITION ON THE SPAN WIRE OR AT LOCATIONS ILLUSTRATED ON THE PLANS FOR CONSTRUCTION STAGING. THE TEMPORARY TRAFFIC SIGNAL SHALL REMAIN IN OPERATION DURING ALL SIGNAL HEAD RELOCATIONS. EACH TEMPORARY TRAFFIC SIGNAL HEAD SHALL HAVE ITS OWN CABLE FROM THE CONTROLLER CABINET TO THE SIGNAL HEAD.
- ALL EXISTING STREET NAME AND INTERSECTION REGULATORY SIGNS SHALL BE REMOVED FROM EXISTING POLES, RELOCATED AND SECURELY FASTENED TO THE SPAN WIRE OR WOOD POLE AS DIRECTED BY THE ENGINEER.
- ANY TEMPORARY SIGNAL WITHIN AN EXISTING CLOSED LOOP TRAFFIC SIGNAL SYSTEM SHALL BE INTERCONNECTED TO THAT SYSTEM USING SIMILAR BRAND CONTROL EQUIPMENT.
- TRAFFIC SIGNAL MANAGEMENT SYSTEMS SHALL BE MAINTAINED IN OPERATION AS INDICATED ON THE PLANS OR AS DIRECTED BY THE ENGINEER. REQUIRED EQUIPMENT SHALL BE AS SHOWN ON THE PLANS AND THE CONTRACTOR SHALL PLACE THE EQUIPMENT IN OPERATION TO THE SATISFACTION OF THE ENGINEER AND THE AGENCY RESPONSIBLE FOR THE TRAFFIC SIGNAL MANAGEMENT SYSTEM.
- DETECTION AT TEMPORARY TRAFFIC SIGNALS SHALL BE INCLUDED FOR ALL APPROACHES OF THE INTERSECTION UNLESS INDICATED OTHERWISE ON THE PLANS. THE DETECTION SYSTEM MUST MEET THE SPECIFICATIONS OF IDOT DISTRICT 1 AND THE CONTRACTOR SHALL PLACE THE DETECTORS INTO OPERATION TO THE SATISFACTION OF THE ENGINEER.
- WHEN PAN, TILT, ZOOM CAMERAS ARE INSTALLED AT THE EXISTING INTERSECTION OR ARE CALLED FOR IN THE PLANS, THE CONTRACTOR SHALL BE RESPONSIBLE FOR INSTALLING AND MAINTAINING THE CAMERAS TO THE SATISFACTION OF THE ENGINEER AND THE AGENCY RESPONSIBLE FOR THE CAMERAS.
- THE CONTRACTOR SHALL VERIFY THE POWER LOCATION AND HEIGHT AND LOCATION OF TEMPORARY WOOD POLES AT STA. 1451+76 30'L, 1469+00 30'L, 1469+70 30'L, AND 1473+80 30'L TO VERIFY HORIZONTAL AND VERTICAL CLEARANCES FROM 12KV AND 34 KV LINES IN WEST R.O.W. WITH COMED PRIOR TO COMMENCEMENT OF THE WORK.
- SILVER GLEN ROAD TRAFFIC SIGNALS WILL NOT BE ON FOR STAGE 2. BAG AND DISCONNECT SILVER GLEN ROAD SIGNAL HEADS FOR STAGE 2.

THE CONTRACTOR SHALL VERIFY THE POWER LOCATION WITH COMED PRIOR TO COMMENCEMENT OF THE WORK.

SYMBOL LEGEND

- 400W, 120V MCII HPS, WITH PHOTOCELL, 15' MA, 50' MH ON WOOD POLE, CLASS 4
- 3-1/2 NO2 AERIAL CABLE ALUMINUM WITH MESSENGER WIRE
- TL-1A TEMPORARY LIGHTING UNIT NUMBER-ONE CIRCUIT A
-
-
-
-
-
-
-
-

GRAPHIC SCALE



Rev. 1-3-13

ROBERT E. HAMILTON CONSULTING ENGINEERS, INC. Engineers - Surveyors - Planners Joliet, Illinois (815) 738-3444		USER NAME = rhamilton DESIGNED - JTS DRAWN - DWS CHECKED - JAR DATE - 8-23-2011	REVISED - 12-4-2012 REVISED - REVISED - REVISED -	STATE OF ILLINOIS DEPARTMENT OF TRANSPORTATION		IL ROUTE 47 OVER VIRGIL DITCH #2 TEMPORARY TRAFFIC SIGNAL AND LIGHTING PLAN FOR STAGE 3		F.A.P. RTE. 326 SECTION 106X-8 COUNTY KANE SHEETS 87 OF 38 CONTRACT NO. 60N13
PLOT SCALE = 1/8" = 100.0000' / 1" = 1000.0000' PLOT DATE = 12/5/2012		DATE - 8-23-2011		SCALE: 1"=50'		SHEET NO. OF SHEETS STA. TO STA.		FED. ROAD DIST. NO. ILLINOIS FED. AID PROJECT