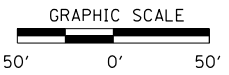
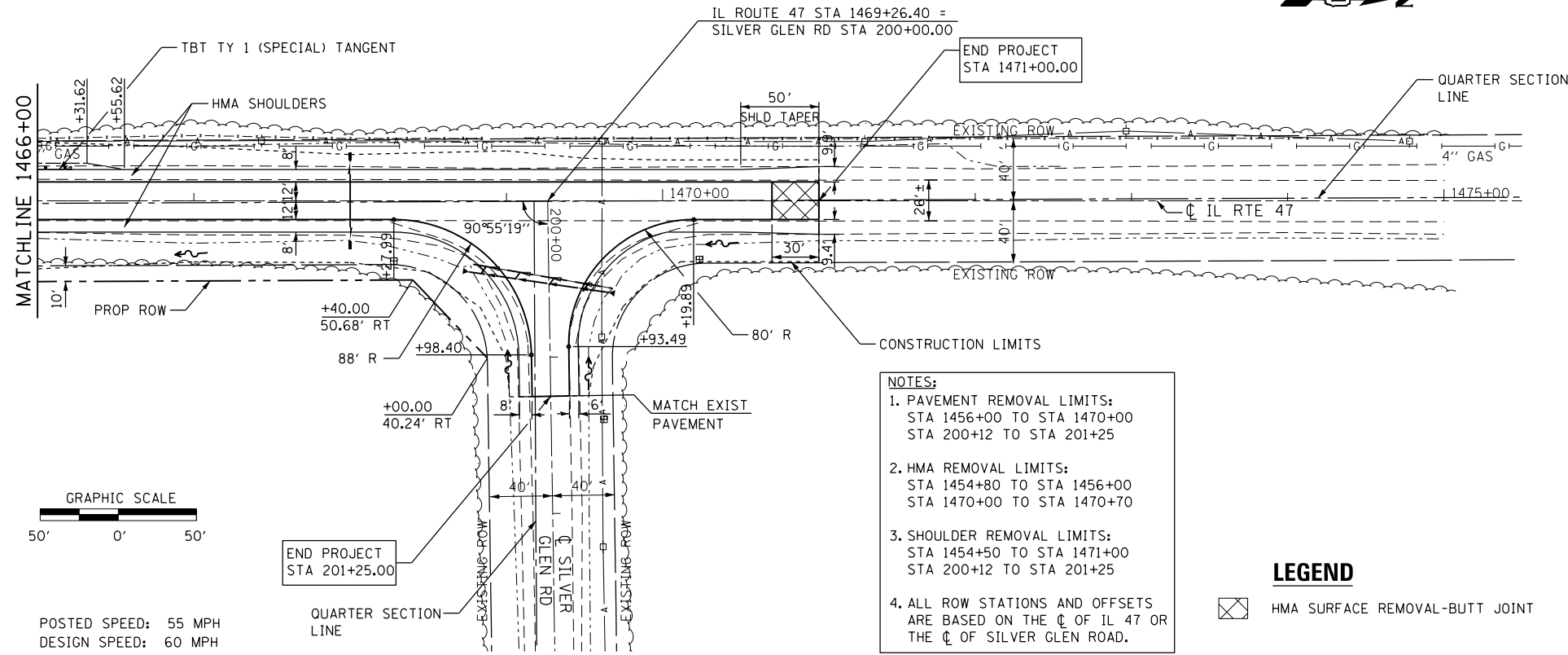


DATE	
BY	
PLAN	
SURVEYED	
PLOTTED	
NOTE BOOK	
NO.	
CHECKED	
FILE NAME	

DATE	
BY	
PROFILE	
SURVEYED	
PLOTTED	
NOTE BOOK	
NO.	
CHECKED	
FILE NAME	

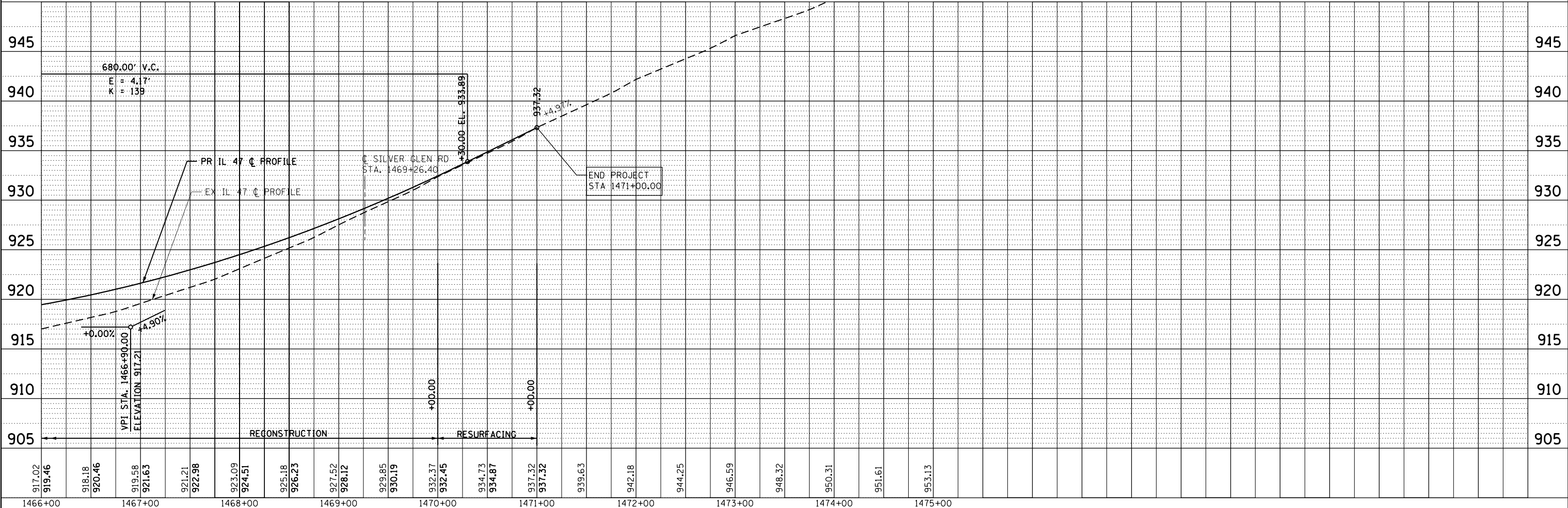
FILE NAME = D:\60N13-ht-pln-prf02.dgn
 MODEL DRIVER = V81.PDF_11x17.plt.ctb



POSTED SPEED: 55 MPH
 DESIGN SPEED: 60 MPH

- NOTES:**
1. PAVEMENT REMOVAL LIMITS:
 STA 1456+00 TO STA 1470+00
 STA 200+12 TO STA 201+25
 2. HMA REMOVAL LIMITS:
 STA 1454+80 TO STA 1456+00
 STA 1470+00 TO STA 1470+70
 3. SHOULDER REMOVAL LIMITS:
 STA 1454+50 TO STA 1471+00
 STA 200+12 TO STA 201+25
 4. ALL ROW STATIONS AND OFFSETS
 ARE BASED ON THE C OF IL 47 OR
 THE C OF SILVER GLEN ROAD.

LEGEND
 HMA SURFACE REMOVAL-BUTT JOINT



USER NAME = mmann
 DESIGNED - MCV
 DRAWN - CMM
 CHECKED - MTM
 DATE - 10/12

REVISIED -
 REVISIED -
 REVISIED -
 REVISIED -

STATE OF ILLINOIS
 DEPARTMENT OF TRANSPORTATION

IL ROUTE 47 OVER VIRGIL DITCH #2
 PROPOSED PLAN AND PROFILE

SCALE: 1"=50' SHEET NO. 2 OF 2 SHEETS STA. 1466+00 TO STA. 1474+00

F.A.P. RTE.	SECTION	COUNTY	TOTAL SHEETS	SHEET NO.
326	106X-B	KANE	87	12
CONTRACT NO. 60N13				

ILLINOIS FED. AID PROJECT