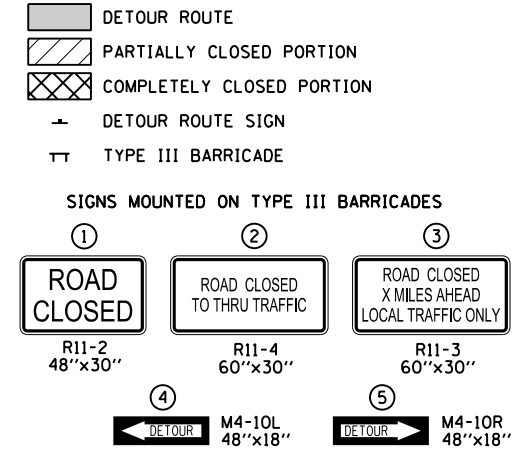
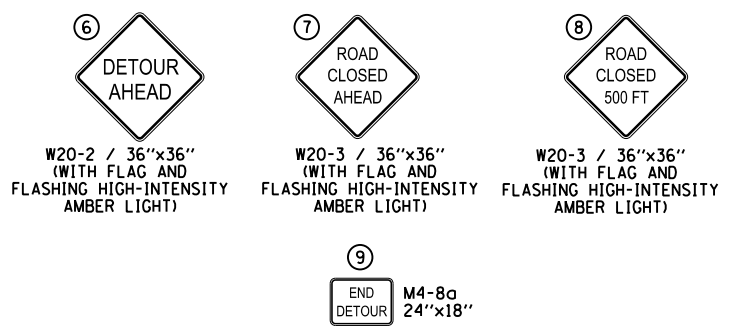


- SEE DISTRICT 1 DETAIL TC-21 "DETOUR SIGNING FOR CLOSING STATE HIGHWAYS" FOR SIGN TYPES AND PLACEMENT OF THE DETOUR ROUTE SIGNING.
- DETOUR ROUTE SIGNING SHALL NOT BE PAID FOR SEPARATELY BUT SHALL BE INCLUDED IN THE COST OF TRAFFIC CONTROL AND PROTECTION (SPECIAL).
- SIGNING SHOWN IS FOR PRE-STAGE INSTALLATION OF BOX CULVERTS ACROSS IL 47.

LEGEND



GENERAL POST-MOUNTED SIGNS



INDEX OF PANELS

PANEL A	TO	M4-5	24"x12"
PANEL B	DETOUR	M4-8	24"x12"
PANEL C	NORTH	M3-1	24"x12"
PANEL D	SOUTH	M3-3	24"x12"
PANEL E	WEST	M3-2	24"x12"
PANEL F	EAST	M3-4	24"x12"
PANEL G	←	M5-1 (L)	21"x15"
PANEL H	←	M6-1 (L)	21"x15"
PANEL I	→	M5-1 (R)	21"x15"
PANEL J	→	M6-1 (R)	21"x15"
PANEL K	↑	M6-3	21"x15"
PANEL L	ILLINOIS 47	M1-5	24"x24"
PANEL M	BURLINGTON ROAD	W17-1-100	36"x18"
PANEL N	SILVER GLEN ROAD	W17-1-100	

WESTBOUND BURLINGTON ROAD DETOURS

ASSEMBLY	PANEL LIST
10	B,E,M,G
11	B,E,M,H
12	B,E,M,I
13	B,E,M,J
14	B,E,M,K

EASTBOUND BURLINGTON ROAD DETOURS

ASSEMBLY	PANEL LIST
15	B,F,M,G
16	B,F,M,H
17	B,F,M,I
18	B,F,M,J
19	B,F,M,K

NORTHBOUND ILLINOIS ROUTE 47 DETOURS

ASSEMBLY	PANEL LIST
20	B,C,L,G
21	B,C,L,H
22	B,C,L,I
23	B,C,L,J
24	B,C,L,K

SOUTHBOUND ILLINOIS ROUTE 47 DETOURS

ASSEMBLY	PANEL LIST
25	B,D,L,G
26	B,D,L,H
27	B,D,L,I
28	B,D,L,J
29	B,D,L,K

WESTBOUND SILVER GLEN ROAD DETOURS

ASSEMBLY	PANEL LIST
30	B,E,N,G
31	B,E,N,H
32	B,E,N,I
33	B,E,N,J
34	B,E,N,K

EASTBOUND SILVER GLEN ROAD DETOURS

ASSEMBLY	PANEL LIST
35	B,F,N,G
36	B,F,N,H
37	B,F,N,I
38	B,F,N,J
39	B,F,N,K

OTHER DETOUR SIGNS

ASSEMBLY	PANEL LIST
40	6+M
41	6+M+N
42	6+N

THIS DETOUR PLAN IS TO BE USED FOR THE CLOSURE OF THE BURLINGTON ROAD / IL 47 INTERSECTION IF SILVER GLEN ROAD IS AVAILABLE AS A DETOUR ROUTE. COORDINATE WITH THE KANE COUNTY DIVISION OF TRANSPORTATION AND THE ENGINEER OF THE ADJOINING PROJECT TO ENSURE THAT SIGNING FOR ALL REQUIRED DETOURS IS CLEAR, CONCISE AND ACCURATE.

ALL SIGNING MODIFICATIONS NECESSARY TO INSTALL OR REMOVE THIS DETOUR PLAN SHALL BE INCIDENTAL TO TRAFFIC CONTROL AND PROTECTION. NO ADDITIONAL COMPENSATION WILL BE GRANTED.

FOR INFORMATION ONLY