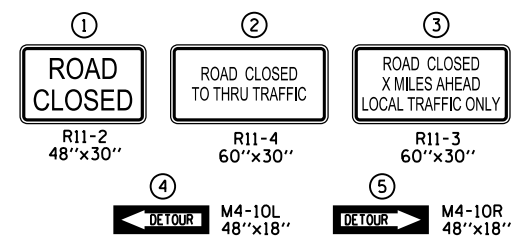


- SEE DISTRICT I DETAIL TC-21 "DETOUR SIGNING FOR CLOSING STATE HIGHWAYS" FOR SIGN TYPES AND PLACEMENT OF THE DETOUR ROUTE SIGNING.
- DETOUR ROUTE SIGNING SHALL NOT BE PAID FOR SEPARATELY BUT SHALL BE INCLUDED IN THE COST OF TRAFFIC CONTROL AND PROTECTION (SPECIAL).
- SIGNING SHOWN IS FOR PRE-STAGE INSTALLATION OF BOX CULVERTS ACROSS IL 47.
- DETOUR ROUTE IS DESIGNED TO ACCOMMODATE THE VIRGIL DITCH CULVERT REPAIR CONTRACT. COORDINATE WITH THE ENGINEER FOR THAT PROJECT BEFORE INSTALLING DETOUR ROUTE.

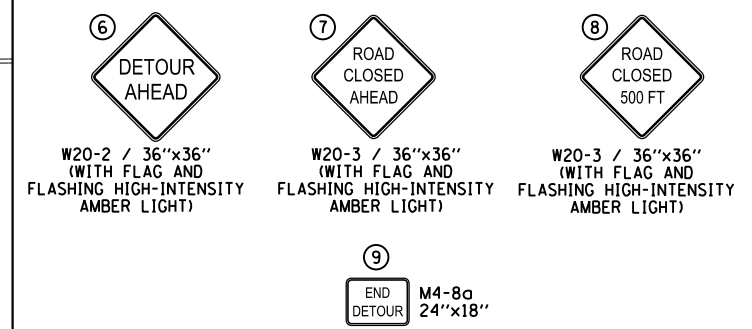
**LEGEND**

- DETOUR ROUTE
- PARTIALLY CLOSED PORTION
- COMPLETELY CLOSED PORTION
- DETOUR ROUTE SIGN
- TYPE III BARRICADE

**SIGNS MOUNTED ON TYPE III BARRICADES**



**GENERAL POST-MOUNTED SIGNS**



WESTBOUND BURLINGTON ROAD DETOURS		EASTBOUND BURLINGTON ROAD DETOURS		NORTHBOUND ILLINOIS ROUTE 47 DETOURS		SOUTHBOUND ILLINOIS ROUTE 47 DETOURS	
ASSEMBLY	PANEL LIST	ASSEMBLY	PANEL LIST	ASSEMBLY	PANEL LIST	ASSEMBLY	PANEL LIST
10	B,E,M,G	15	B,F,M,G	20	B,C,L,G	25	B,D,L,G
11	B,E,M,H	16	B,F,M,H	21	B,C,L,H	26	B,D,L,H
12	B,E,M,I	17	B,F,M,I	22	B,C,L,I	27	B,D,L,I
13	B,E,M,J	18	B,F,M,J	23	B,C,L,J	28	B,D,L,J
14	B,E,M,K	19	B,F,M,K	24	B,C,L,K	29	B,D,L,K

WESTBOUND SILVER GLEN ROAD DETOURS		EASTBOUND SILVER GLEN ROAD DETOURS		OTHER DETOUR SIGNS	
ASSEMBLY	PANEL LIST	ASSEMBLY	PANEL LIST	ASSEMBLY	PANEL LIST
30	B,E,N,G	35	B,F,N,G	40	6+M
31	B,E,N,H	36	B,F,N,H	41	6+M+N
32	B,E,N,I	37	B,F,N,I	42	6+N
33	B,E,N,J	38	B,F,N,J		
34	B,E,N,K	39	B,F,N,K		

**INDEX OF PANELS**

PANEL A	TO	M4-5	24"x12"
PANEL B	DETOUR	M4-8	24"x12"
PANEL C	NORTH	M3-1	24"x12"
PANEL D	SOUTH	M3-3	24"x12"
PANEL E	WEST	M3-2	24"x12"
PANEL F	EAST	M3-4	24"x12"
PANEL G	←	M5-1 (L)	21"x15"
PANEL H	←	M6-1 (L)	21"x15"
PANEL I	→	M5-1 (R)	21"x15"
PANEL J	→	M6-1 (R)	21"x15"
PANEL K	↑	M6-3	21"x15"
PANEL L	ILLINOIS 47	M1-5	24"x24"
PANEL M	BURLINGTON ROAD	W17-1-100	36"x18"
PANEL N	SILVER GLEN ROAD	W17-1-100	

THIS DETOUR PLAN IS TO BE USED FOR THE CLOSURE OF BURLINGTON ROAD AT ILLINOIS ROUTE 47, IN COORDINATION WITH THE CONSTRUCTION STAGING AS DEPICTED IN THE PLANS, IN THE EVENT OF A CONCURRENT CLOSURE OF SILVER GLEN ROAD AS PART OF THE NEARBY VIRGIL DITCH CULVERT RECONSTRUCTION PROJECT. COORDINATE WITH THE KANE COUNTY DIVISION OF TRANSPORTATION AND THE ENGINEER OF THE ADJOINING PROJECT TO ENSURE THAT SIGNING OF ALL REQUIRED DETOURS IS CLEAR, CONCISE AND ACCURATE.

ALL SIGNING MODIFICATIONS NECESSARY TO INSTALL, REMOVE OR MODIFY THIS DETOUR PLAN SHALL BE INCIDENTAL TO TRAFFIC CONTROL AND PROTECTION. NO ADDITIONAL COMPENSATION WILL BE GRANTED.

**FOR INFORMATION ONLY**

FILE NAME = RMG	USER NAME = m.papirnik	DESIGNED -	REVISED -
\\chisrv\dot\Projects\Kane.CRMG\66343 - Burlington Phase II\CAD\Sheets\66343.stg\DRAWN.dgn		REVISIONS -	
MAP	PLOT SCALE = 2500.0000' / in.	CHECKED -	REVISED -
	PLOT DATE = 9/24/2012	DATE -	REVISED -

**STATE OF ILLINOIS  
DEPARTMENT OF TRANSPORTATION**

**MAINTENANCE OF TRAFFIC - STAGES 2-4  
ALTERNATE IL 47 & BURLINGTON ROAD DETOUR PLAN**

SCALE: NONE SHEET OF SHEETS STA. TO STA.

F.A.P. RTE.	SECTION	COUNTY	TOTAL SHEETS	SHEET NO.
326	07-00357-00-CH	KANE	87	23
				CONTRACT NO.
ILLINOIS FED. AID PROJECT				