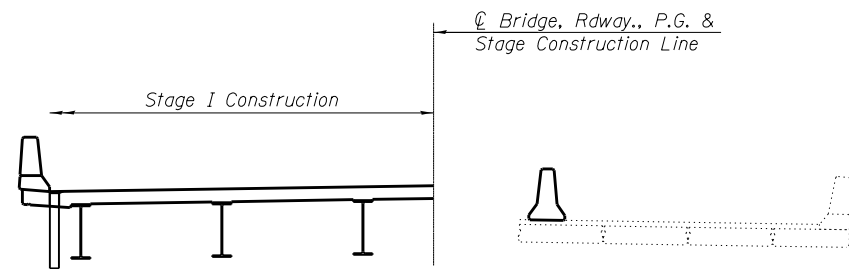
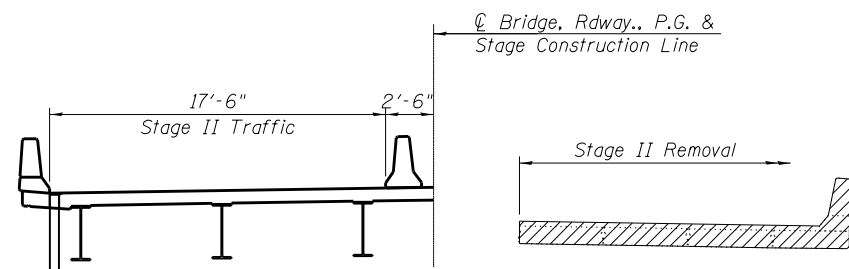


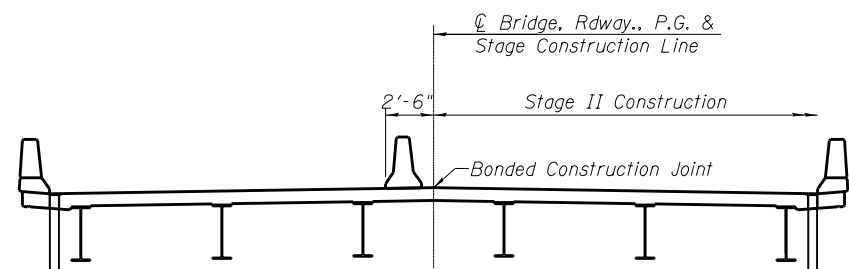
STAGE I REMOVAL



STAGE I CONSTRUCTION



STAGE II REMOVAL

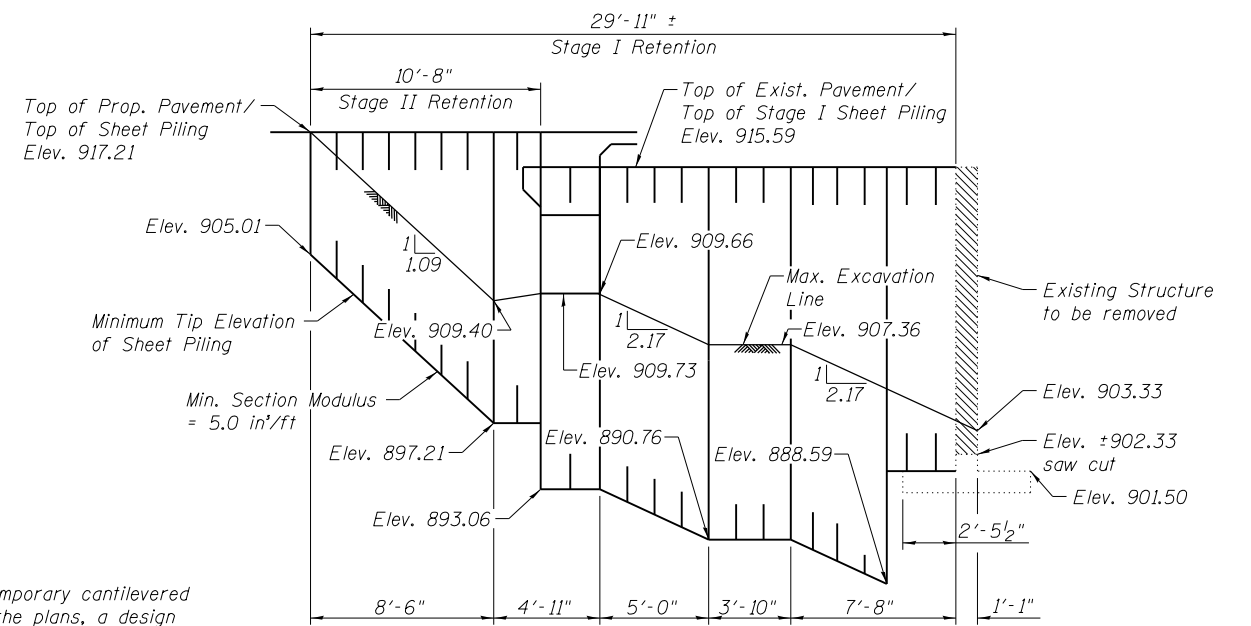


STAGE II CONSTRUCTION

Note:

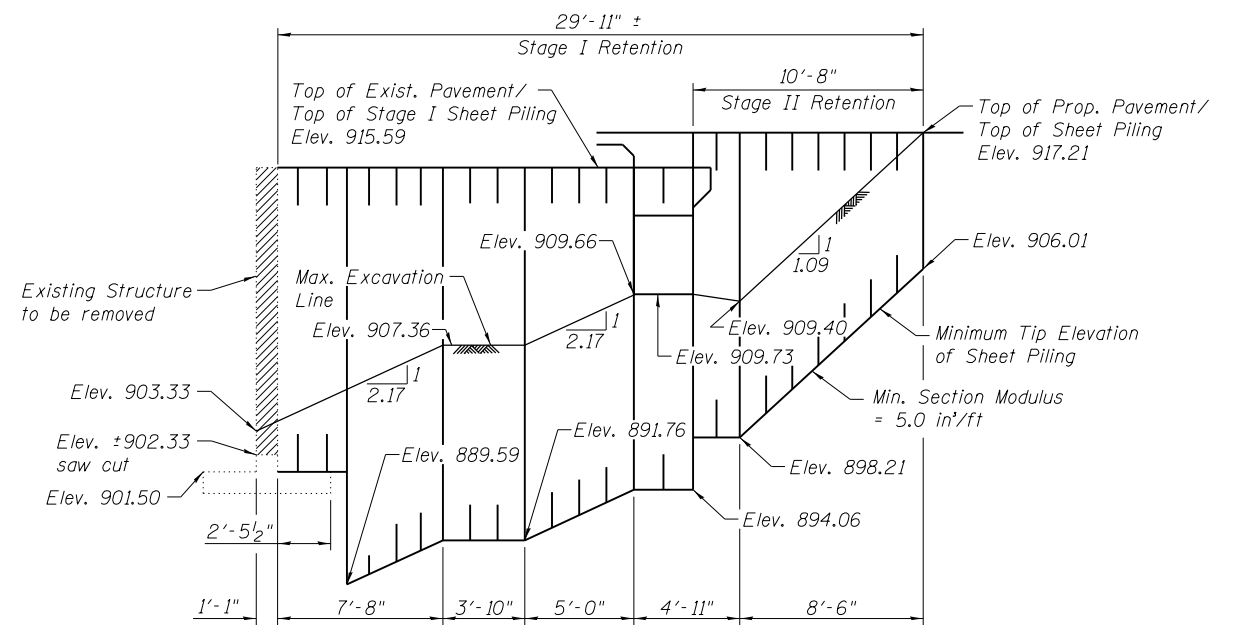
If the Contractor chooses to alter the temporary cantilevered sheet piling design requirements shown on the plans, a design submittal including plan details and calculations will be required for review and acceptance by the Engineer.

The Contractor shall connect the first sheet to the existing abutment wall to ensure stability of sheets driven to the top of the existing footing. This connection shall be reviewed and accepted by the Engineer and included in the cost for Temporary Sheet Piling.



TEMPORARY SHEET PILING

(South Abutment)



TEMPORARY SHEET PILING

(North Abutment)

All Staging cross sections are looking North.

For Quantity of Temporary Concrete Barrier, see Roadway Plans.
Hatched area indicates Removal of Existing Structures.



USER NAME =	DESIGNED - RJP	REVISED
	CHECKED - MJT	REVISED
PLOT SCALE =	DRAWN - JTF	REVISED
PLOT DATE =	CHECKED - MJT	REVISED

**STATE OF ILLINOIS
DEPARTMENT OF TRANSPORTATION**

**STAGING CONSTRUCTION PLAN
STRUCTURE NO. 045-0078**

SHEET NO. 3 OF 22 SHEETS

F.A.P. RTE.	SECTION	COUNTY	TOTAL SHEETS	SHEET NO.
326	106X-B	KANE	87	41
CONTRACT NO. 60N13				

ILLINOIS FED. AID PROJECT