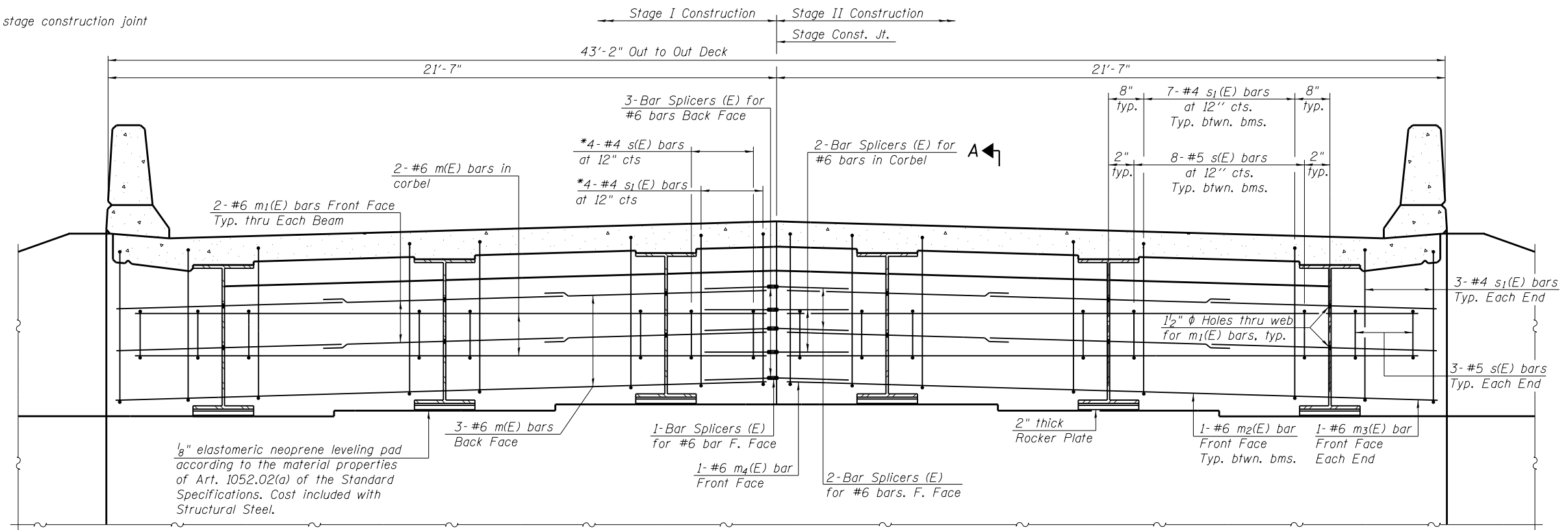
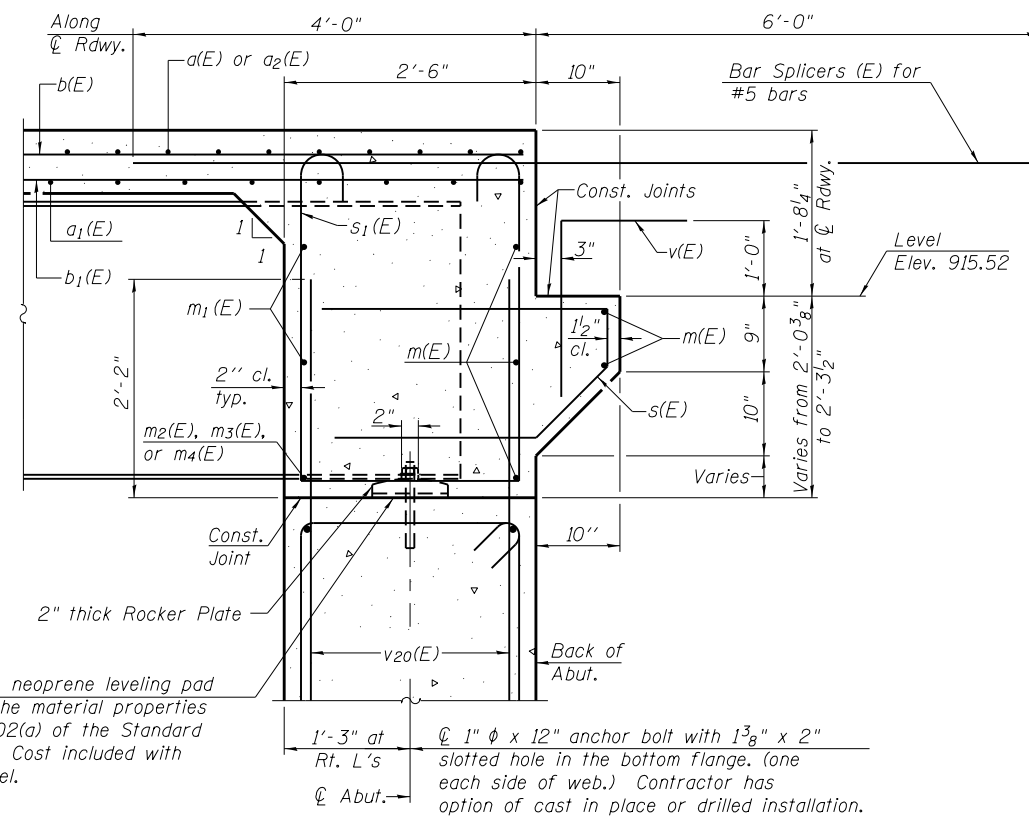


\*Typical each side of stage construction joint



**DIAPHRAGM ELEVATION AT ABUTMENT**

(Dimensions at right angles to rdwy.)  
(Looking North)



Notes:  
Reinforcement bars in diaphragm are billed with superstructure on sheet 10 of 22.  
Concrete in diaphragm is included with Concrete Superstructure on sheet 10 of 22.  
For details of bars  $s_1(E)$  &  $v(E)$  see sheet 10 of 22.  
The  $s(E)$  and  $s_1(E)$  bars shall be placed parallel to the beams. Spacing for these bars shall be at right angles to the beams.  
 $v_{20}(E)$  bars are billed with Abutments on sheets 15 and 16 of 22.

**MIN. BAR LAP**

#6 bar = 3'-4"

$\frac{1}{8}$ " elastomeric neoprene leveling pad according to the material properties of Art. 1052.02(a) of the Standard Specifications. Cost included with Structural Steel.

**SECTION A-A**

(Dimensions at right angles to abutment, except as shown.)

SI-DSI

7-1-10



USER NAME =	DESIGNED - RJP	REVISED
	CHECKED - MJT	REVISED
PLOT SCALE =	DRAWN - JTF	REVISED
PLOT DATE =	CHECKED - MJT	REVISED

STATE OF ILLINOIS  
DEPARTMENT OF TRANSPORTATION

INTEGRAL ABUTMENT DIAPHRAGM DETAILS  
STRUCTURE NO. 045-0078

SHEET NO. 11 OF 22 SHEETS

F.A.P. RTE.	SECTION	COUNTY	TOTAL SHEETS	SHEET NO.
326	106X-B	KANE	87	49
CONTRACT NO. 60N13				

ILLINOIS FED. AID PROJECT